

For Sale

Vacant Land

\$5.00 / SF



E. Hwy 30

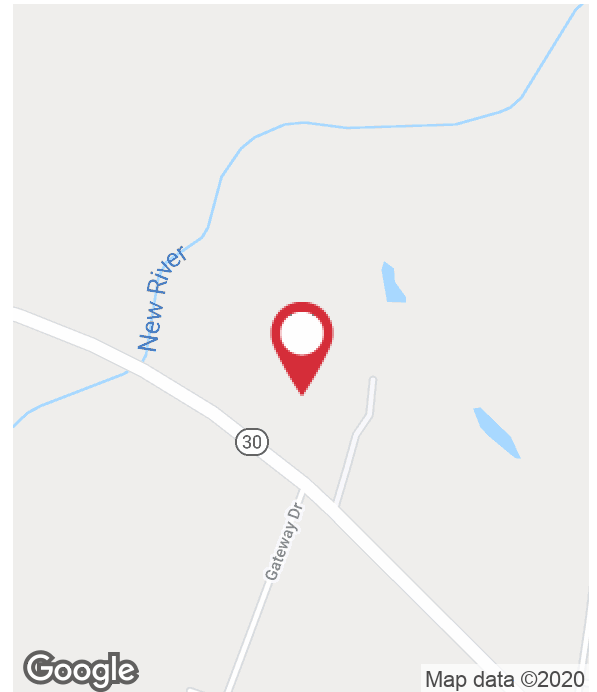
Geismar, Louisiana 70734

Property Highlights

- 4.83 acre tract of land located on Hwy. 30 in Gonzales
- Light Industrial (LI) Zoning
- Located in the Hwy 30 Industrial corridor
- <5 miles from I-10
- Close to major plants such as Shell, Honeywell, and BASF
- 10,000-30,000 SF Build-to-Suit Available for Lease

Sale Price

\$5.00 / SF



For more information

Ty Gose, SIOR, CCIM

O: 225 295 0800 | C: 225 297 7808
ty@latterblum.com

Michael Cashio, CCIM

O: 225 295 0800 | C: 225 247 9812
mcashio@latterblum.com

CALL OR EMAIL FOR MORE INFORMATION

NO WARRANTY OR REPRESENTATION, EXPRESS OR IMPLIED, IS MADE AS TO THE ACCURACY OF THE INFORMATION CONTAINED HEREIN, AND THE SAME IS SUBMITTED SUBJECT TO ERRORS, OMISSIONS, CHANGE OF PRICE, RENTAL OR OTHER CONDITIONS, PRIOR SALE, LEASE OR FINANCING, OR WITHDRAWAL WITHOUT NOTICE, AND OF ANY SPECIAL LISTING CONDITIONS IMPOSED BY OUR PRINCIPALS NO WARRANTIES OR REPRESENTATIONS ARE MADE AS TO THE CONDITION OF THE PROPERTY OR ANY HAZARDS CONTAINED THEREIN ARE ANY TO BE IMPLIED. LICENSED IN LOUISIANA.

1700 City Farm Drive
Baton Rouge, LA 70806
225 295 0800 tel
latterblum.com

February 13, 2020

Property Outline



New River

New River

30

30

Gateway Dr

30

Gateway Dr

EHwy 30

Google

Map data © 2020 Imagery © 2020 , Maxar Technologies, U.S. Geological Survey, USDA Farm Service Agency

Industrial Map

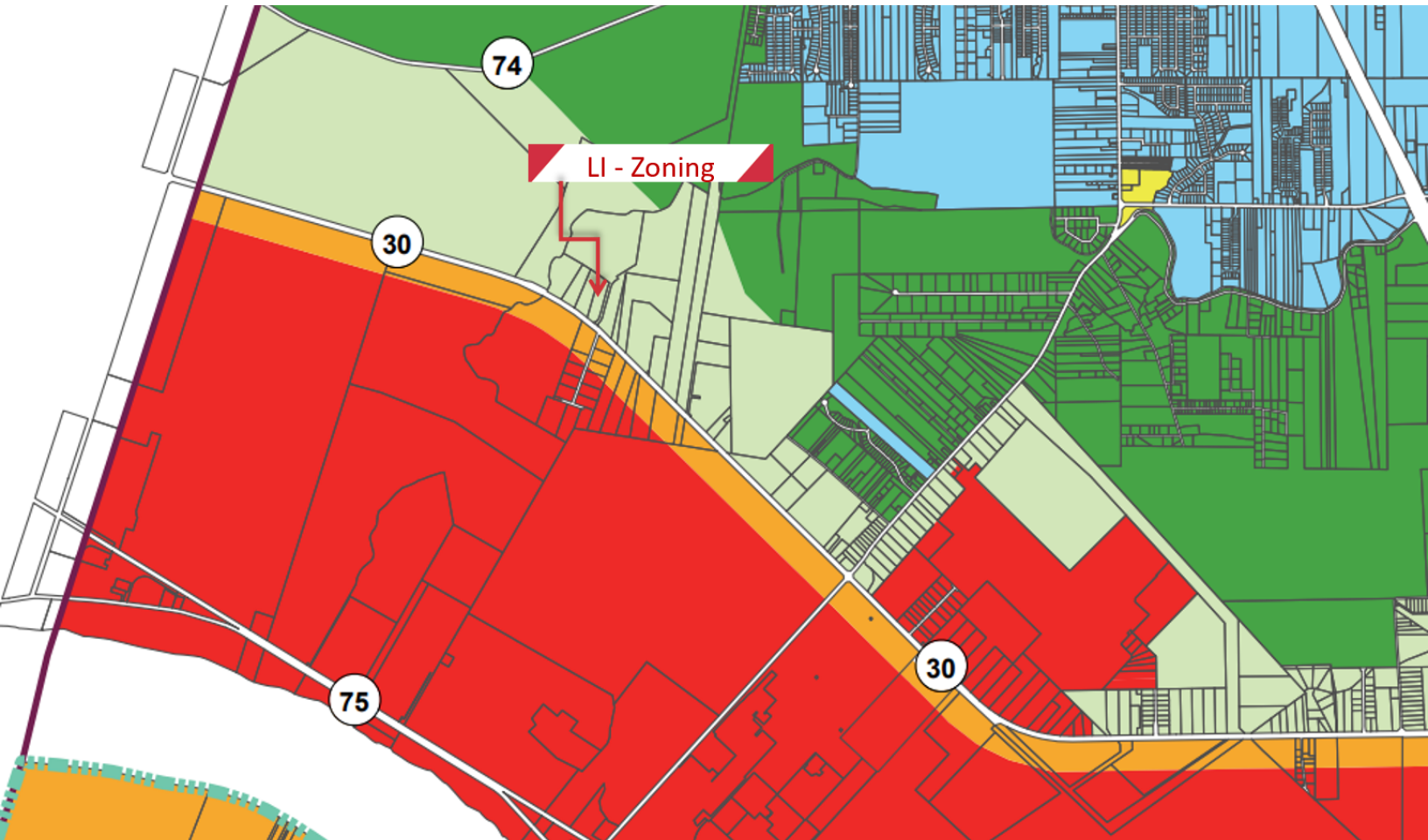
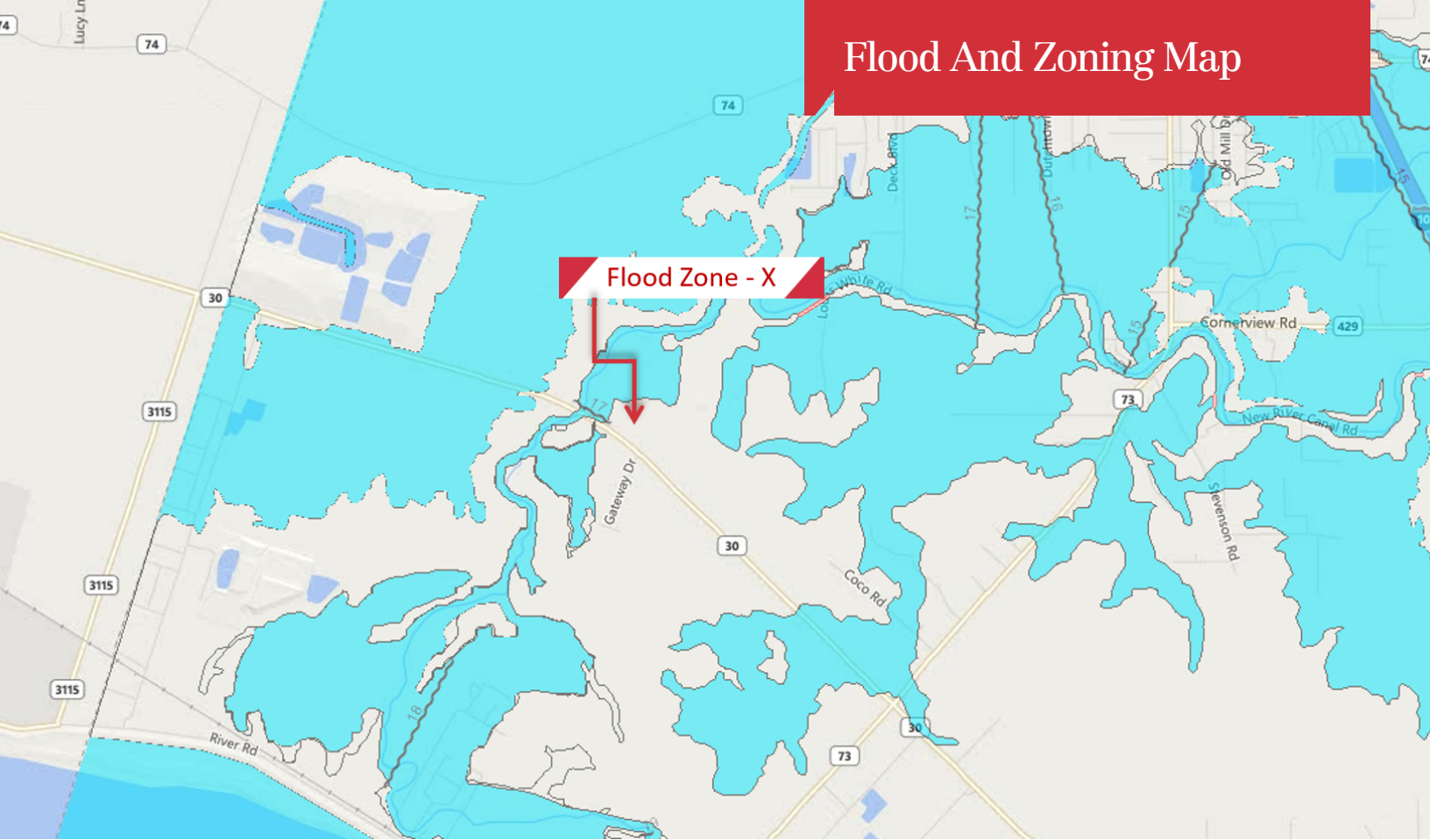


Google

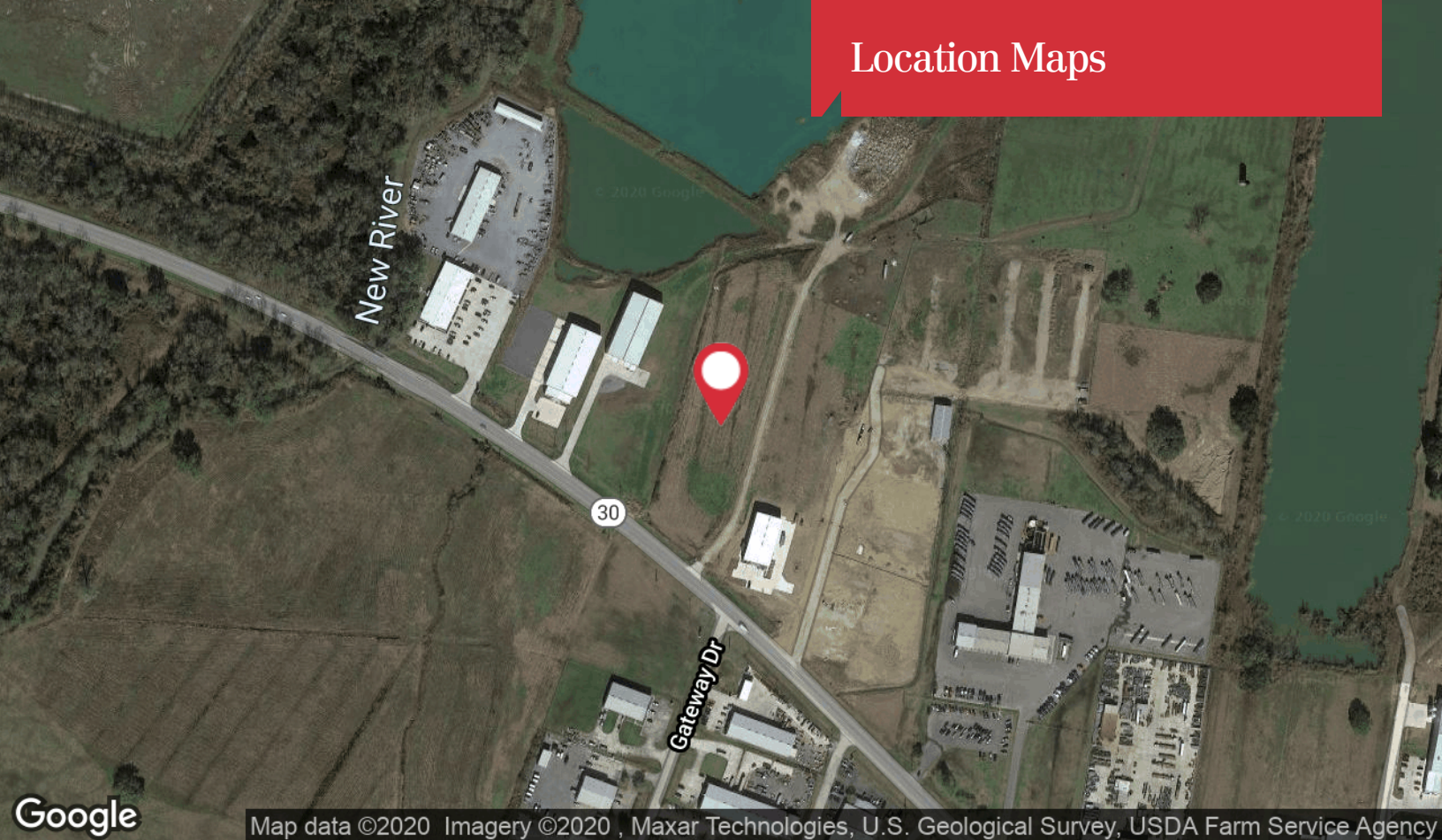
Map data ©2020 Imagery ©2020 , Maxar Technologies, U.S. Geological Survey, USDA Farm Service Agency



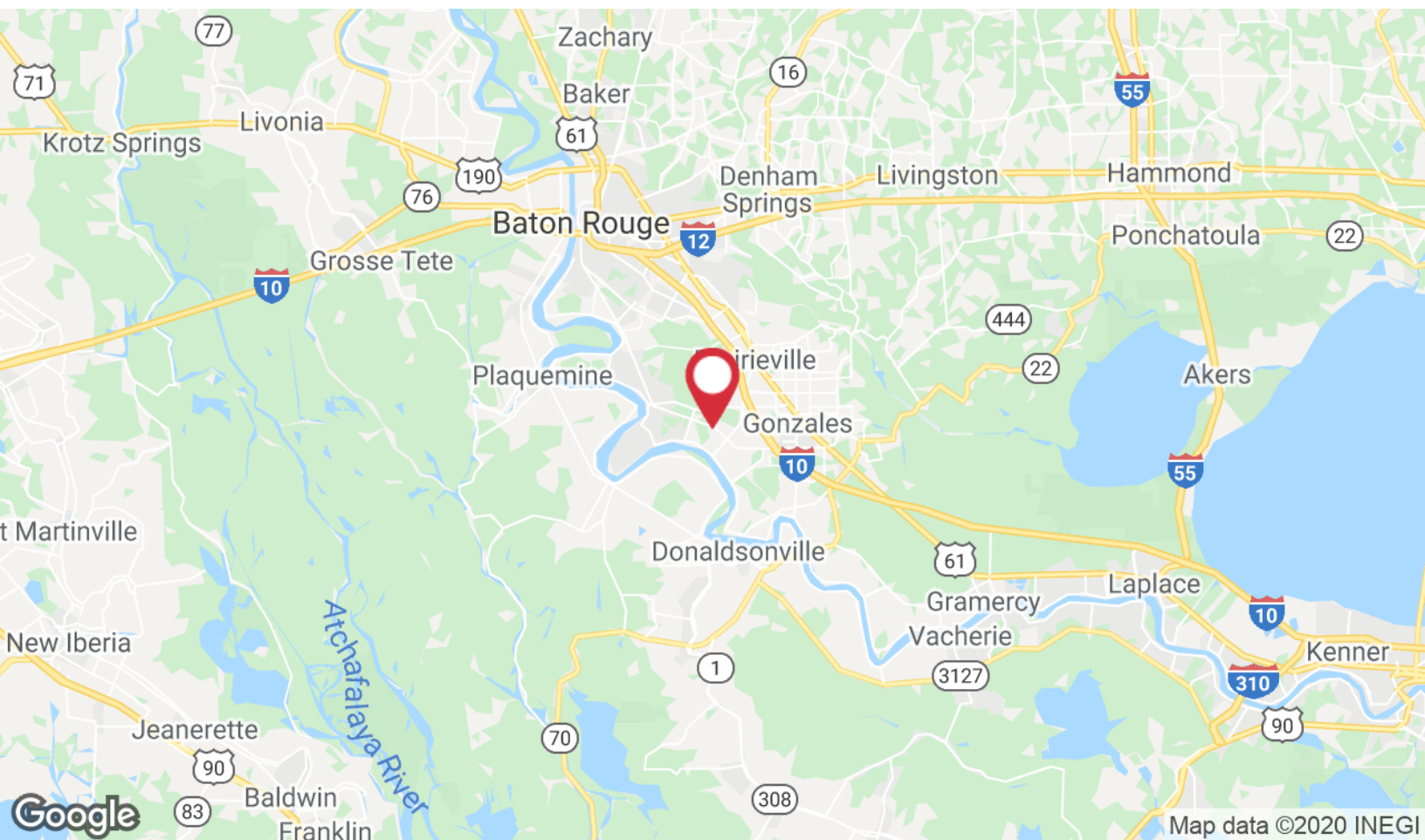
Flood And Zoning Map



Location Maps



Map data ©2020 Imagery ©2020, Maxar Technologies, U.S. Geological Survey, USDA Farm Service Agency



Map data ©2020 INEGI