

Clay Street **BUSINESS PARK I**

116 Clay St NW | Auburn, WA



**INDUSTRIAL SPACE
FOR LEASE**

6,005 SF - 6,533 SF Total



THE ANDOVER
COMPANY, INC.

CORFAC INTERNATIONAL

JACK CRANE
(206) 258-3159
jacklc@andoverco.com

JEFF CRANE
(206) 336-5336
jcrane@andoverco.com

BRIAN BRUININKS, CCIM
(206) 336-5324
bbruininks@andoverco.com



PROPERTY HIGHLIGHTS

- Dock high and grade level served suites
- Convenient access to Hwy-167 and Hwy-18
- 24' clear height
- Fully sprinklered buildings
- Available 7/1/2024
- Contact brokers for rates



The information contained herein has been obtained from reliable sources, but is not guaranteed. A prospective buyer/tenant should verify each item relating to this property and all information contained herein.



JACK CRANE
(206) 258-3159
jacklc@andoverco.com

JEFF CRANE
(206) 336-5336
jcrane@andoverco.com

BRIAN BRUININKS, CCIM
(206) 336-5324
bbruininks@andoverco.com

AVAILABLE SUITES

Clay Street BUSINESS PARK I

116 Clay St NW | Auburn, WA

Suite A1

Total SF: **6,533 SF**
Office SF: **840 SF**

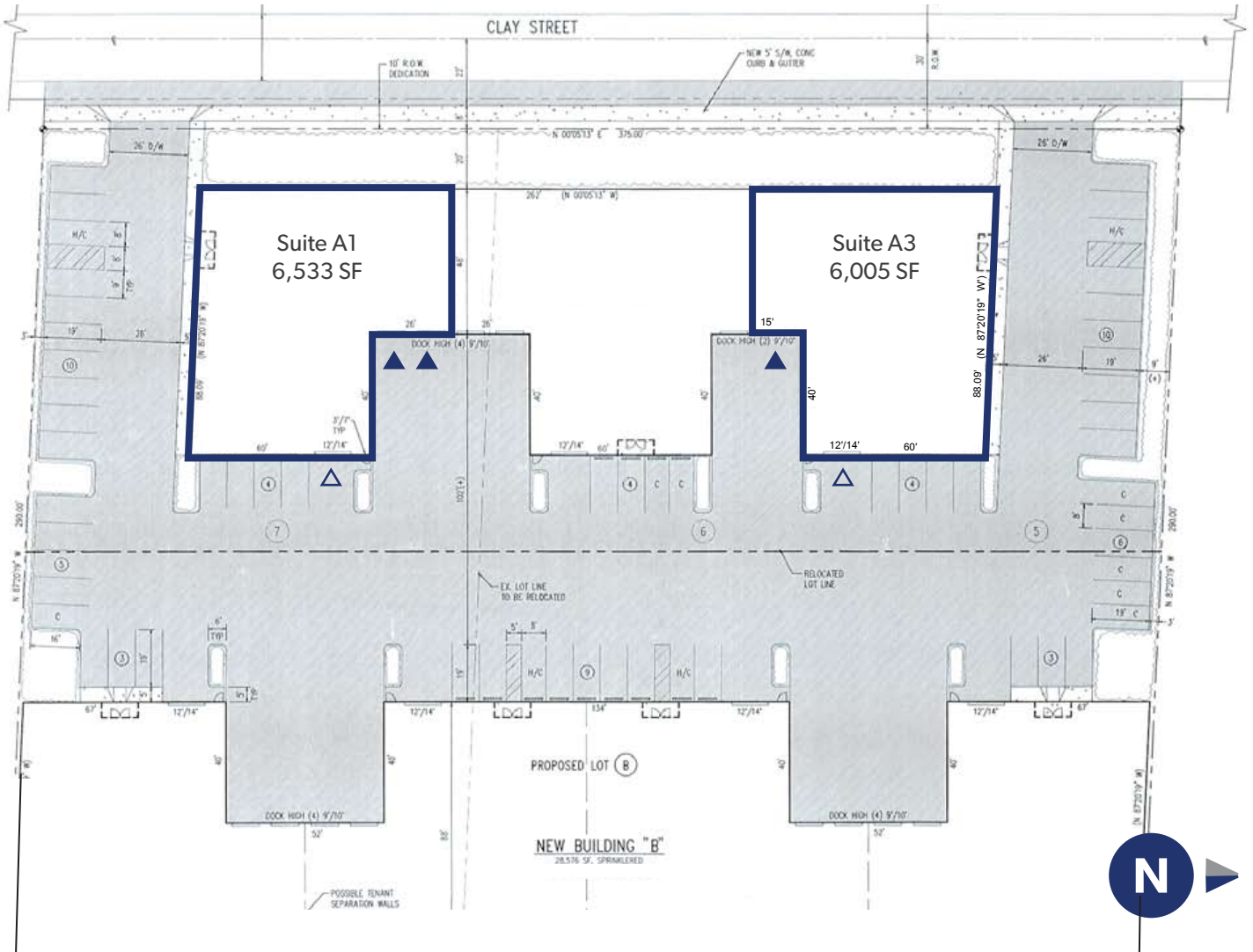
2 Dock High Doors
1 Grade Level Door
Available 7/1/2024

Suite A3

Total SF: **6,005 SF**
Office SF: **2,880 SF**

1 Dock High Door
1 Grade Level Door
Available 7/1/2024

ON 2 FLOORS



- △ Grade Level Doors
- ▲ Dock High Doors