

Cupertino Civic Park

20370, 20380 & 20410 Town Center Lane

Cupertino, CA

±404 - ±1,960 Rentable Square Feet Available

We are pleased to offer the following spaces:



- ◆ Two-Story Professional Office Buildings
- ◆ Excellent Central Cupertino Location
- ◆ Easy Access to Highways 280 and 85
- ◆ Covered and Surface Parking
- ◆ Common Conference Room
- ◆ Walking Distance to Restaurants (Chipotle, Curry House, Bitter + Sweet, Kee Wah Bakery), Hotels (Juniper), and Financial Services (Wells Fargo & Chase Bank)
- ◆ Adjacent to Cupertino Civic Center (City Hall, Community Hall, Library with Coffee Society)
- ◆ Local Ownership



West Valley Properties, Inc.



Bryte Bellotti Director 650.473.4767 bbellotti@ngkf.com CA RE License #01944321

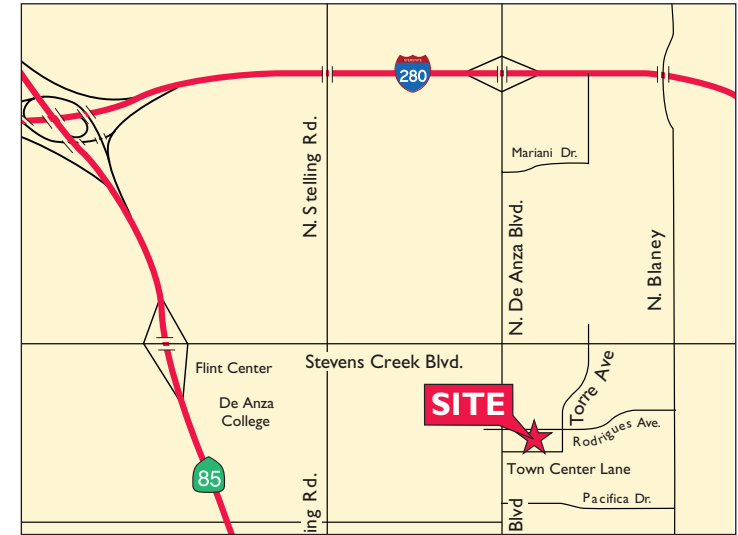
John McKenna Senior Managing Director 650.688.8548 jmckenna@ngkf.com CA RE License #01276576

245 Lytton Avenue, Suite 150, Palo Alto, CA 94301 www.ngkf.com

15-0952*03/20

Cupertino Civic Park

20370, 20380 & 20410 Town Center Lane
Cupertino, CA



Bryte Bellotti Director 650.473.4767 bbellotti@ngkf.com CA RE License #01944321

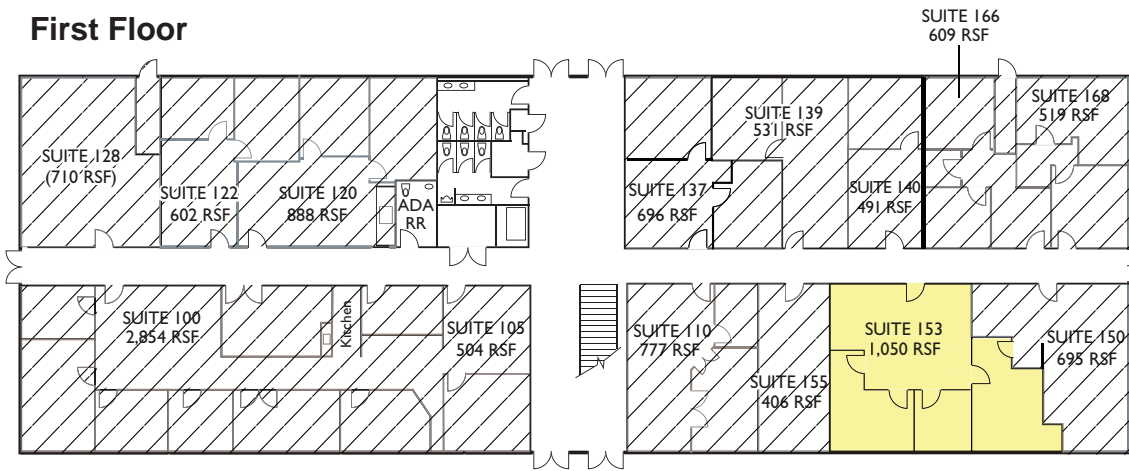
John McKenna Senior Managing Director 650.688.8548 jmckenna@ngkf.com CA RE License #01276576

245 Lytton Avenue, Suite 150, Palo Alto, CA 94301 www.ngkf.com

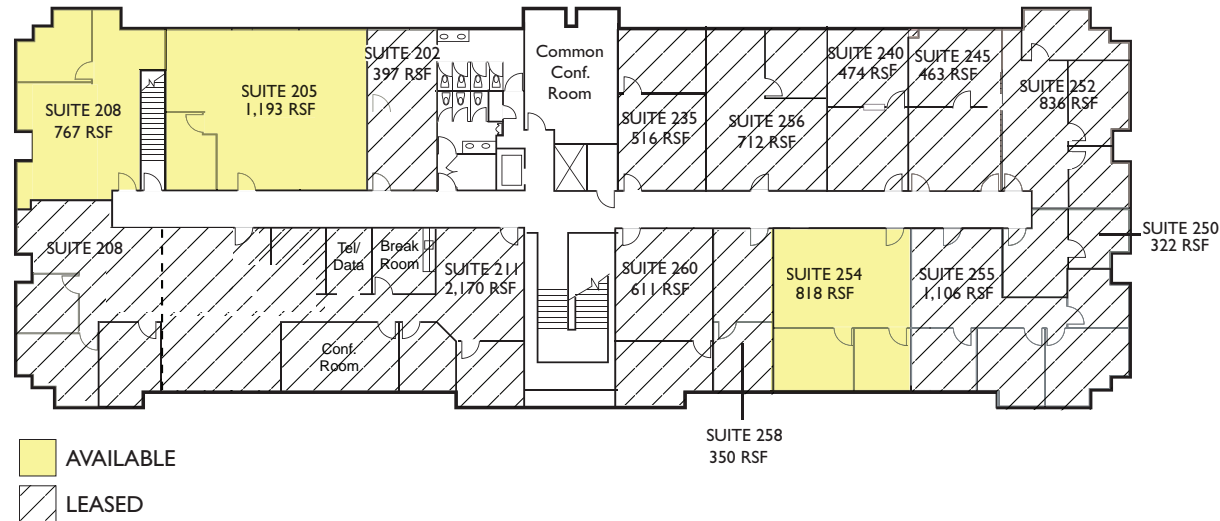
Cupertino Civic Park

20370 Town Center Lane
Cupertino, CA

First Floor



Second Floor



AVAILABLE
 LEASED



Bryte Bellotti Director 650.473.4767 bbellotti@ngkf.com CA RE License #01944321

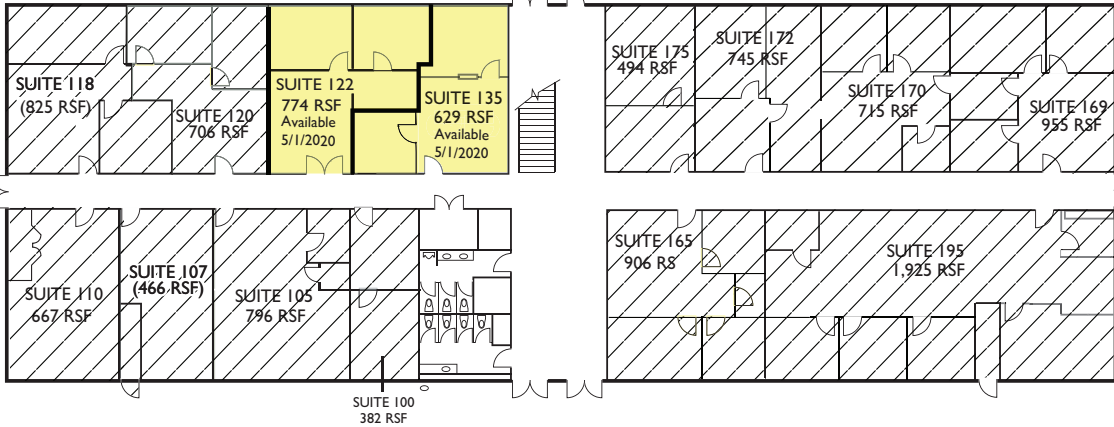
John McKenna Senior Managing Director 650.688.8548 jmckenna@ngkf.com CA RE License #01276576

245 Lytton Avenue, Suite 150, Palo Alto, CA 94301 www.ngkf.com

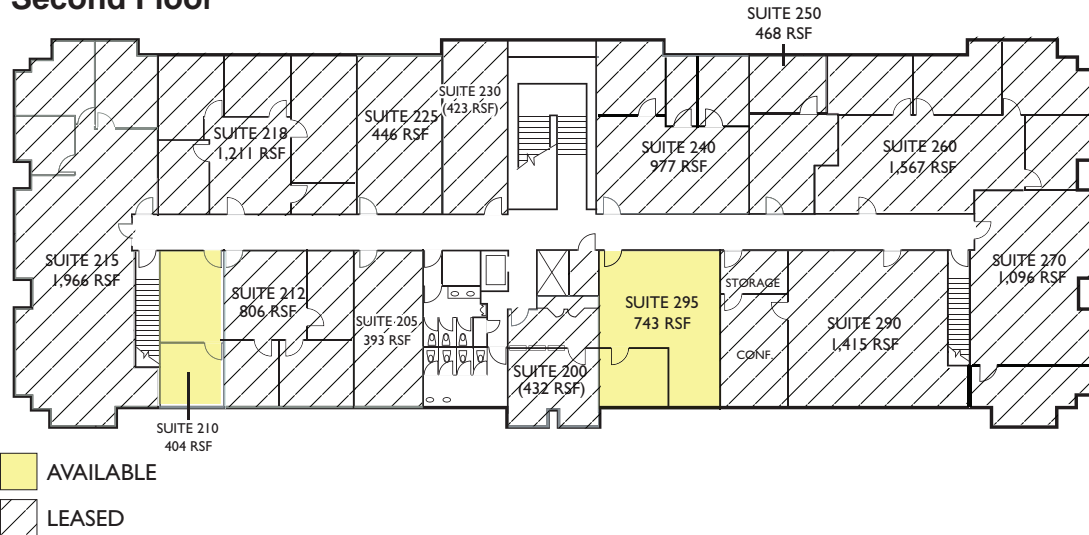
Cupertino Civic Park

20380 Town Center Lane
Cupertino, CA

First Floor



Second Floor



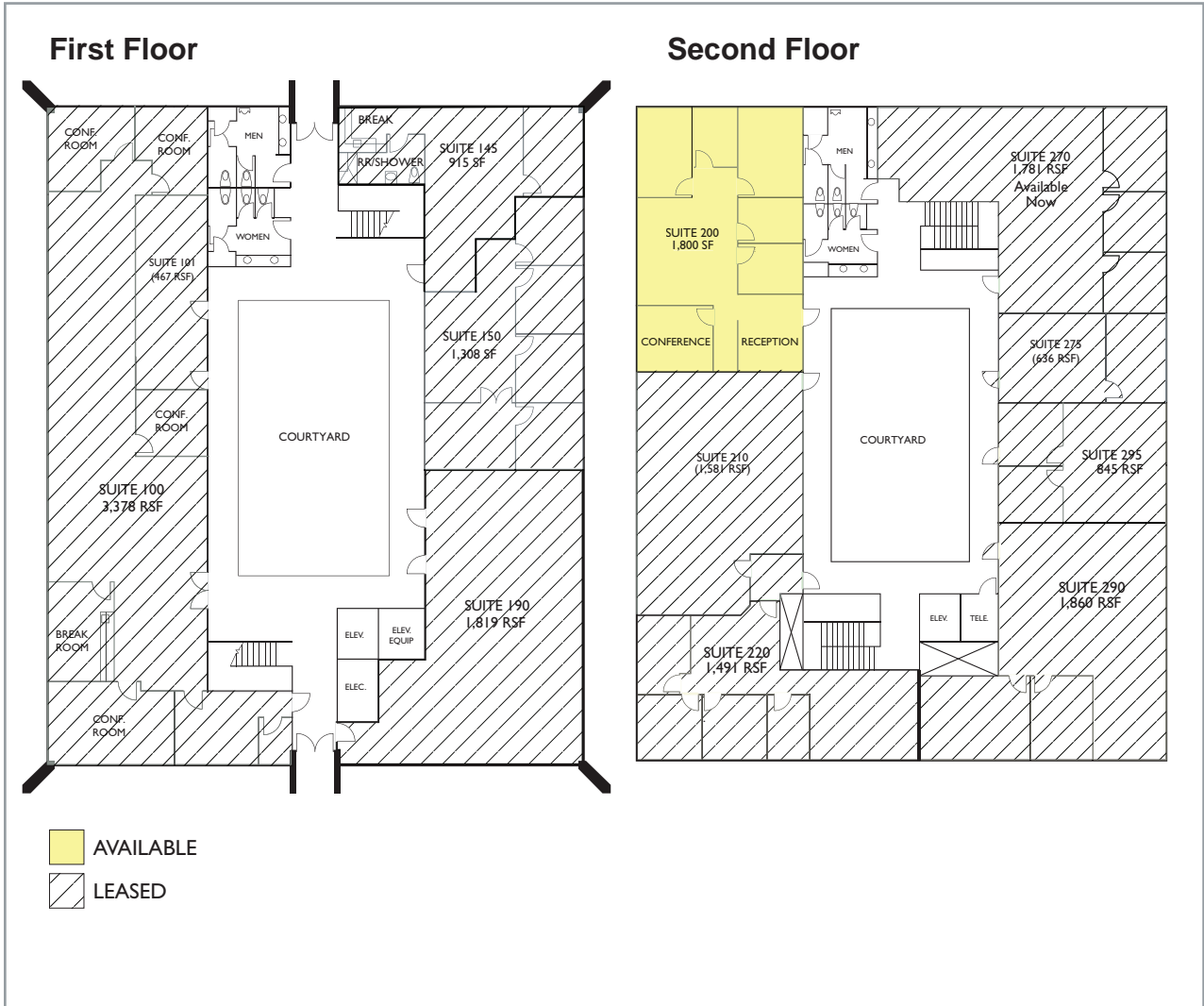
Bryte Bellotti Director 650.473.4767 bbellotti@ngkf.com CA RE License #01944321

John McKenna Senior Managing Director 650.688.8548 jmckenna@ngkf.com CA RE License #01276576

245 Lytton Avenue, Suite 150, Palo Alto, CA 94301 www.ngkf.com

Cupertino Civic Park

20410 Town Center Lane
Cupertino, CA



Bryte Bellotti Director 650.473.4767 bbellotti@ngkf.com CA RE License #01944321

John McKenna Senior Managing Director 650.688.8548 jmckenna@ngkf.com CA RE License #01276576

245 Lytton Avenue, Suite 150, Palo Alto, CA 94301 www.ngkf.com