

## RETAIL SPACE FOR LEASE

11083-11093 East Mississippi Avenue  
Aurora, Colorado

### BUILDING HIGHLIGHTS

UNIT 11091-C

1,408 RSF

LEASE RATE

\$2,600/MO GROSS

### PROPERTY FEATURES

- 11083-11093 East Mississippi Avenue is in the Expo Park neighborhood. Expo Park is the 6th most walkable neighborhood in Aurora.
- Within walking distance to The Gardens on Havana with numerous retail and restaurant amenities
- Close to RTD' R-Line light rail
- Quick access to I-225

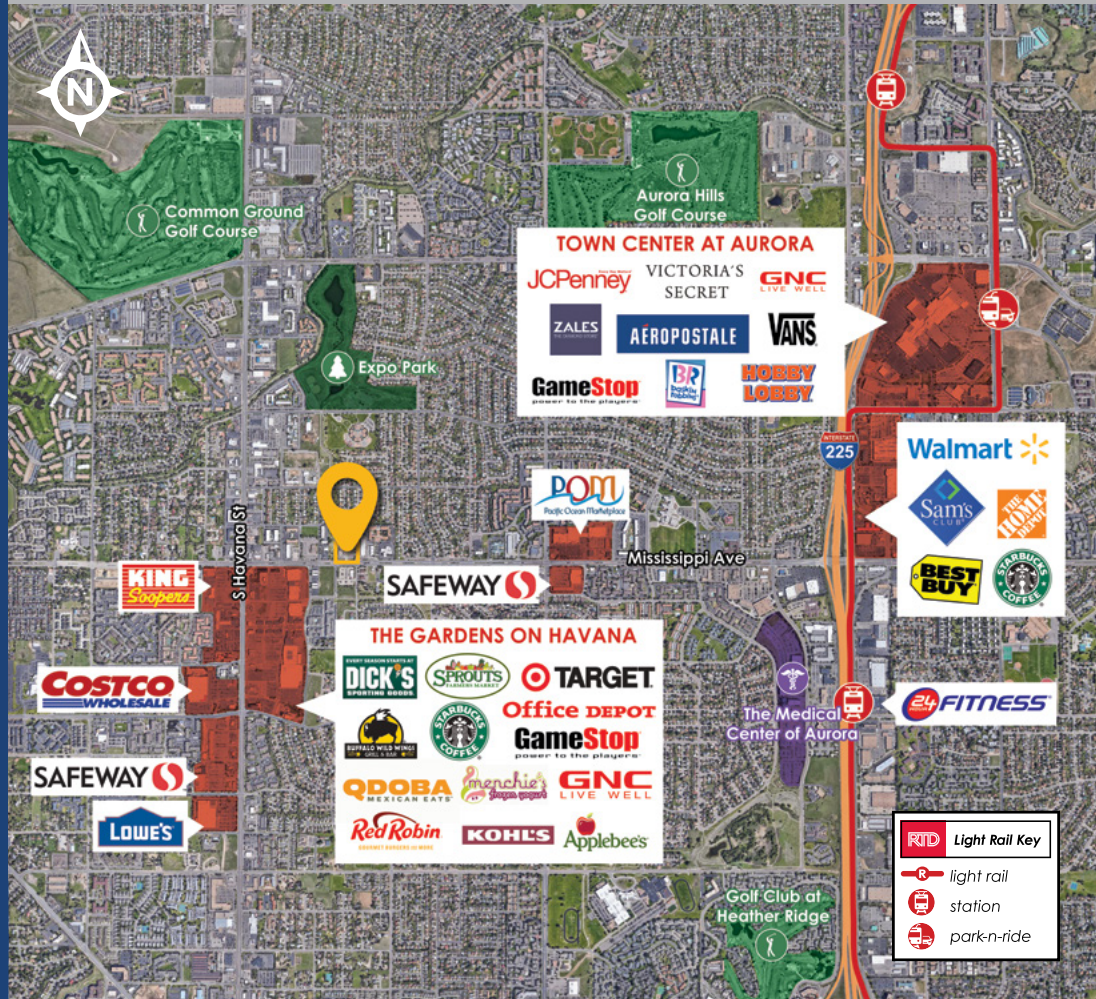
### WALK SCORE®

72

**Very Walkable**  
Most errands can be accomplished

82

**Very Bikeable**



FOR MORE INFORMATION CONTACT:

**DEAN CALLAN & COMPANY**  
1510 28th Street, Suite 200  
Boulder, Colorado 80303  
303.449.1420  
www.deancallan.com

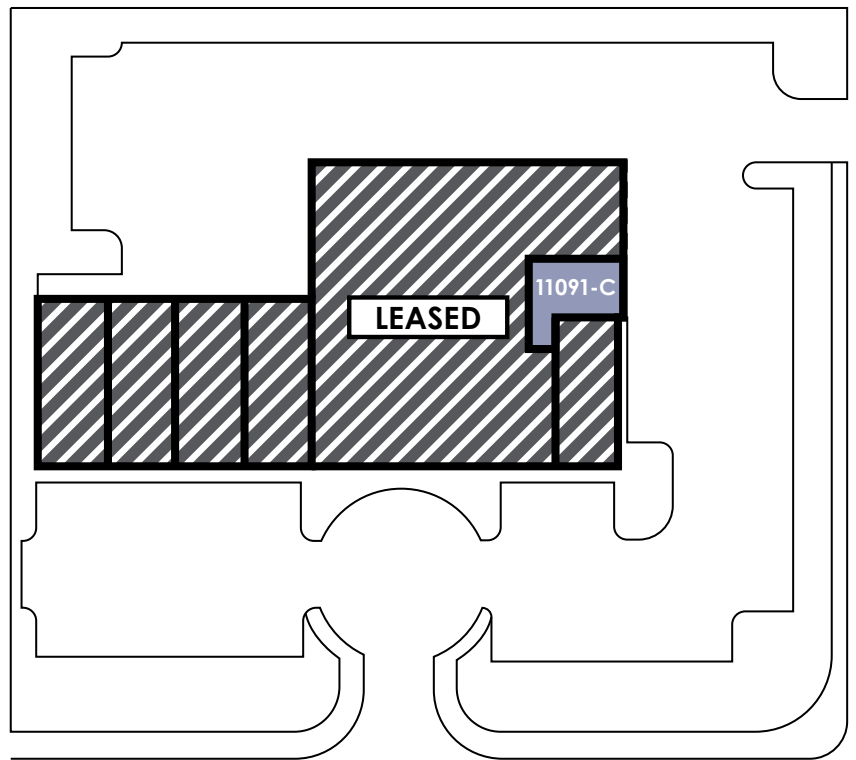
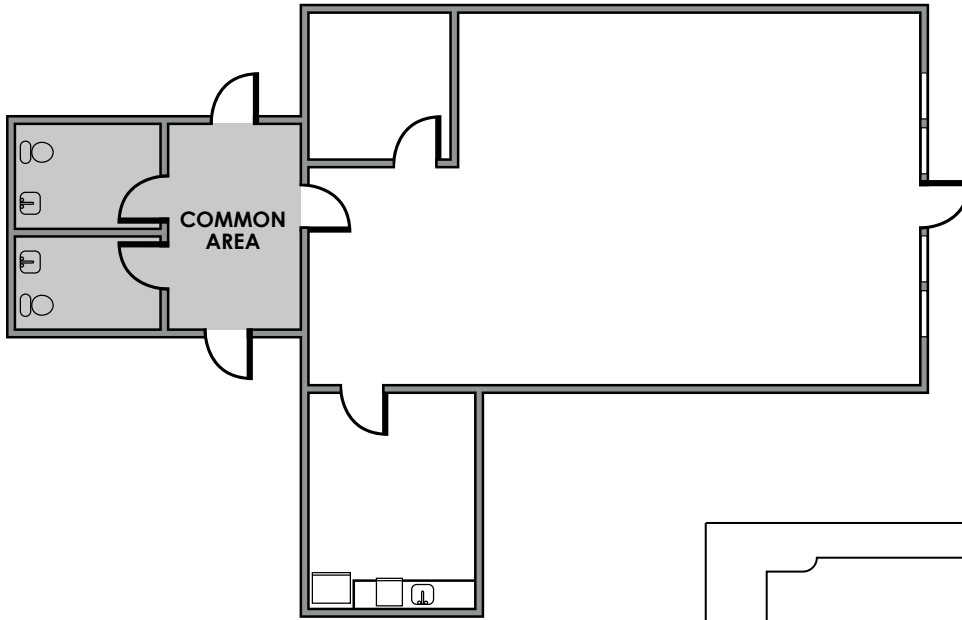
**BRIT BANKS**  
Direct: 303.945.2020  
Cell: 303.903.9775  
bbanks@deancallan.com

**TORREY PATTERSON**  
Direct: 720.826.2291  
Cell: 303.514.4559  
tpatterson@deancallan.com





FLOOR PLAN - UNIT 11091-C



All information furnished regarding this property is obtained from sources deemed reliable. Dean Callan & Company, Inc. makes no representation, guarantee or warranty, expressed or implied, as to the accuracy thereof.

FOR MORE INFORMATION CONTACT:

**BRIT BANKS**  
Direct: 303.945.2020  
Cell: 303.903.9775  
bbanks@deancallan.com

**TORREY PATTERSON**  
Direct: 720.826.2291  
Cell: 303.514.4559  
tpatterson@deancallan.com

