

Available For Lease

Pacific Business Park Building 1

6830 S 220th Street
Kent, WA

Approximately 3,210 SF total
with 2,044 SF of office

\$0.55 shell

\$0.85 office add-on, NNN

1 grade-level door

14' clear height

Comcast cable available

Available with 30 days notice

Great corner location with lots
of grass

Exposure to West Valley Hwy

Abundant parking



Tremendous access to I-5 and SR-167 via S 212th Street



Doug Klein, SIOR

Senior Vice President

206.248.7348

dklein@kiddermathews.com

Kraig Heeter

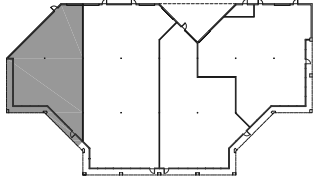
Associate Vice President

206.248.7313

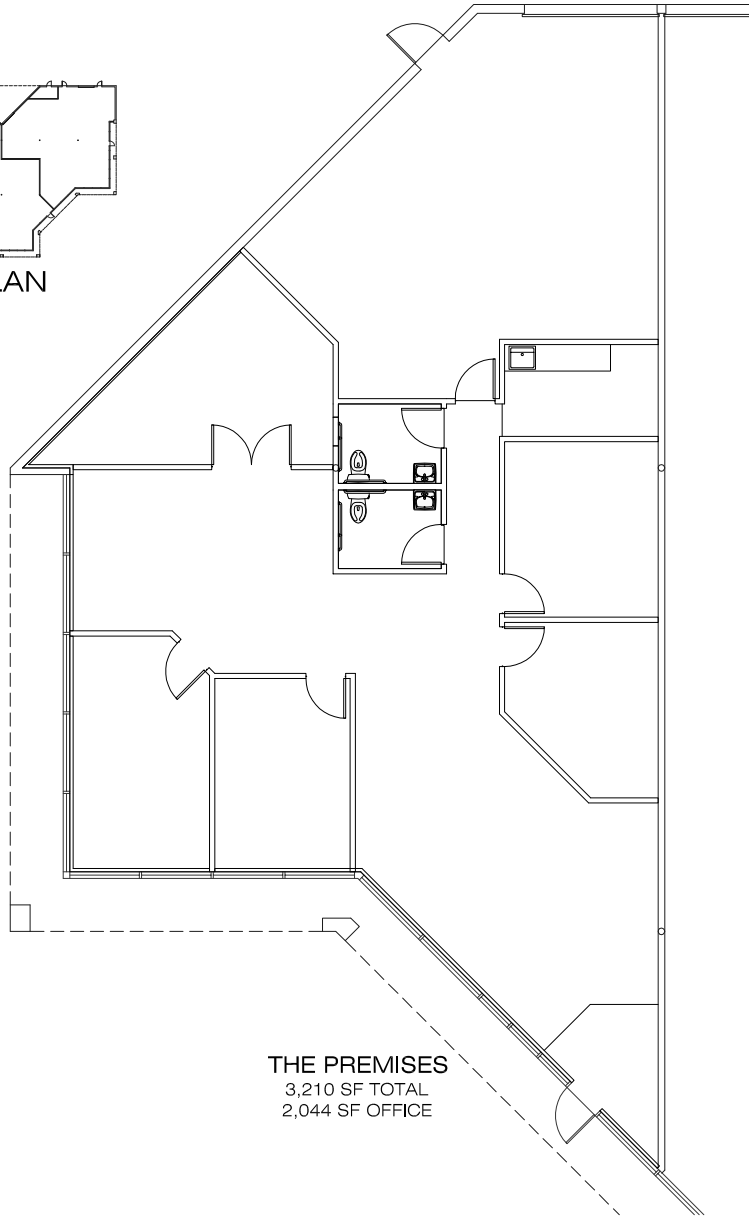
kheeter@kiddermathews.com

Pacific Business Park Building 1

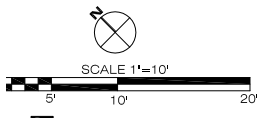
SUBJECT



BUILDING PLAN
NOT TO SCALE



THE PREMISES
3,210 SF TOTAL
2,044 SF OFFICE



PACIFIC BUSINESS PARK (NORTH)
BUILDING #1 (PTR #157)
6830 S. 22TH STREET
KENT, WA 98032

Contact

Doug Klein, SIOR
Senior Vice President
206.248.7348
dklein@kiddermathews.com

Kraig Heeter
Associate Vice President
206.248.7313
kheeter@kiddermathews.com