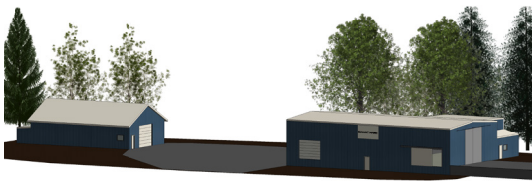




# Available For Lease



**DEMOGRAPHICS**

	1 mile	3 miles	5 miles
Population	2,107	39,545	84,647
Median HH Income	\$78,212	\$54,700	\$62,070

## Rare, close-in, industrial property

Located near Highway 101 & I-5 with lots of drive-by traffic

Ample parking and/or yard space

### New owners are improving landscaping and buildings

2,250 SF with small office and restroom

\$0.70/SF + power

## Contact

**Evan Parker**  
360.705.0174  
eparker@kiddermathews.com

**Amy Evans**  
360.705.1337  
aevans@kiddermathews.com

# Black Lake Business Park

2905 Black Lake Blvd SW, Tumwater, WA



## Contact

**Evan Parker**  
360.705.0174  
eparker@kiddermathews.com

**Amy Evans**  
360.705.1337  
aevans@kiddermathews.com

[kiddermathews.com](http://kiddermathews.com)

This information supplied herein is from sources we deem reliable. It is provided without any representation, warranty or guarantee, expressed or implied as to its accuracy. Prospective Buyer or Tenant should conduct an independent investigation and verification of all matters deemed to be material, including, but not limited to, statements of income and expenses. Consult your attorney, accountant, or other professional advisor.

