

# EmeryStation West



FOR LEASE

New 265,000 SF World Class Laboratory and Office Project Located Within the EmeryStation Campus

**Timothy Mason**  
415.229.8918  
tmason@kiddermathews.com  
LIC #00832545

**James Bennett**  
415.229.8948  
jbennett@kiddermathews.com  
LIC #00869074

**Eric Bluestein**  
415.229.8970  
ericb@kiddermathews.com  
LIC #01720416

Property owned by:

**WAREHAM**  
DEVELOPMENT

Represented by:

**km** Kidder  
Mathews

# EmeryStation West

Emeryville, CA

## Building Features

World class 265,000 SF building is latest addition to highly-successful 2-million SF EmeryStation research and tech campus.

Seven levels of laboratory/medical/office accomodation above two-story transit and parking podium.

Large and efficient floor plates ranging from 36,000-38,000 SF.

Large, open sky green roof atop podium provides space to recreate, contemplate and collaborate with access to pedestrian bridge and additional eating and shopping options.

Campus with abundant amenities, lush gardens and art, exercise facility, confrence facilities, and monthly lunch-and-learn program with speakers from cluster of research and tech companies within Wareham campuses.

Direct connection to BART via Emery-Go-Round shuttle.



Parking ratio of 2.0/1,000: 125 public parking spaces in the building—new 675-car garage being constructed adjacent to the building.

The East Bay/TransBay transit center at street level to serve:

- Amtrak's Capitol Corridor highly-trafficked commuter route from Sacramento to San Jose for not only EmeryStation tenant workers but for those going to the TransBay Center in San Francisco.
- Amtrak's transcontinental trains to and from San Francisco.
- Bus bays allow passengers to hop off train and access last mile transit options including AC transit, EmeryGoRound free shuttle to BART, and taxis, limos, car shares, and private cars.

Wareham Development is the premier developer, owner and property manager of life science and research space in the East Bay.

Designed by Perkins + Will, one of the preeminent firms specializing in the design of laboratory and office laboratories for the life science and tech sectors.

Designed to meet LEED Gold standards.

Wareham's highly experienced property management and engineering staff will provide 24/7/365 support to tenants.

Available for tenant improvements Q3 2017.

**Timothy Mason**  
415.229.8918  
tmason@kiddermathews.com  
LIC #00832545

**James Bennett**  
415.229.8948  
jbennett@kiddermathews.com  
LIC #00869074

**Eric Bluestein**  
415.229.8970  
ericb@kiddermathews.com  
LIC #01720416

Property owned by:

**WAREHAM**  
DEVELOPMENT

Represented by:

**km** **Kidder**  
**Mathews**

# EmeryStation West

Emeryville, CA

## Project Renderings



**Timothy Mason**  
415.229.8918  
tmason@kiddermathews.com  
LIC #00832545

**James Bennett**  
415.229.8948  
jbennett@kiddermathews.com  
LIC #00869074

**Eric Bluestein**  
415.229.8970  
ericb@kiddermathews.com  
LIC #01720416

Property owned by:

**WAREHAM**  
DEVELOPMENT

Represented by:

**km** **Kidder Mathews**

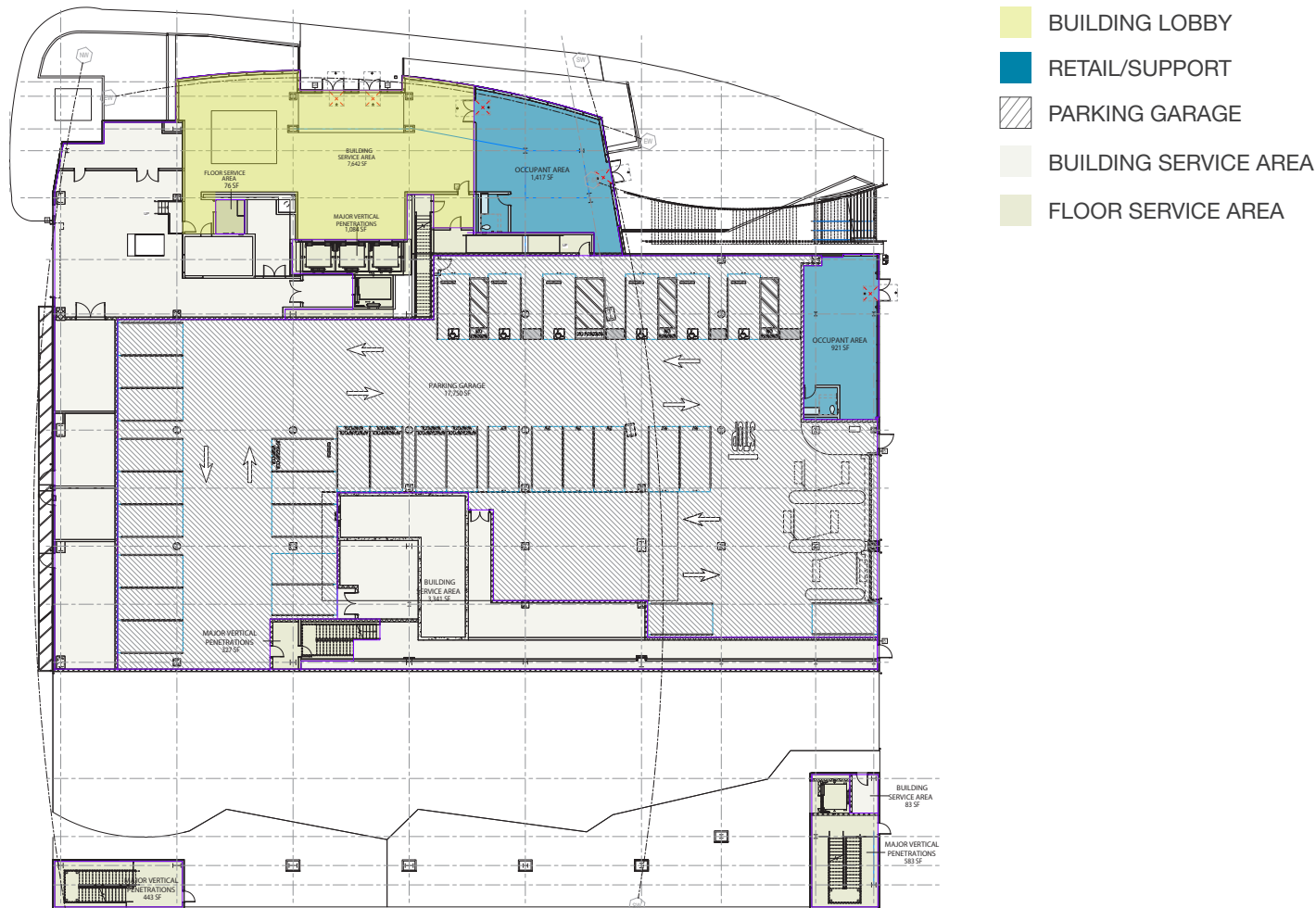
This information supplied herein is from sources we deem reliable. It is provided without any representation, warranty or guarantee, expressed or implied as to its accuracy. Prospective Buyer or Tenant should conduct an independent investigation and verification of all matters deemed to be material, including, but not limited to, statements of income and expenses. Consult your attorney, accountant, or other professional advisor.

# EmeryStation West

Emeryville, CA

## Floor Plans

### LOBBY LEVEL



**Timothy Mason**  
415.229.8918  
tmason@kiddermathews.com  
LIC #00832545

**James Bennett**  
415.229.8948  
jbennett@kiddermathews.com  
LIC #00869074

**Eric Bluestein**  
415.229.8970  
ericb@kiddermathews.com  
LIC #01720416

Property owned by:

**WAREHAM**  
DEVELOPMENT

Represented by:

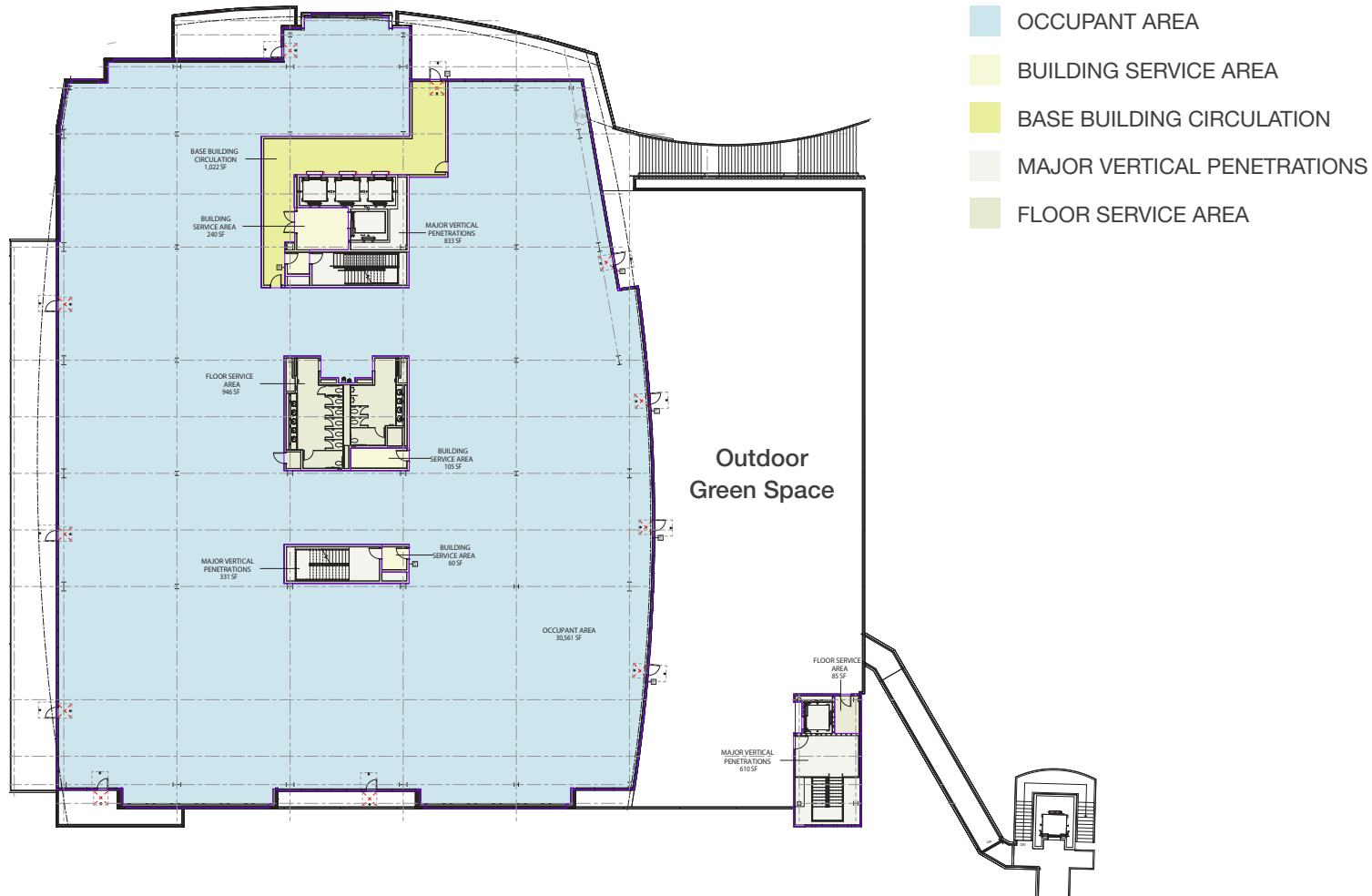
**km** **Kidder Mathews**

# EmeryStation West

Emeryville, CA

## Floor Plans

### PATIO/PLAZA FLOOR



**Timothy Mason**  
415.229.8918  
tmason@kiddermathews.com  
LIC #00832545

**James Bennett**  
415.229.8948  
jbennett@kiddermathews.com  
LIC #00869074

**Eric Bluestein**  
415.229.8970  
ericb@kiddermathews.com  
LIC #01720416

Property owned by:

**WAREHAM**  
DEVELOPMENT

Represented by:

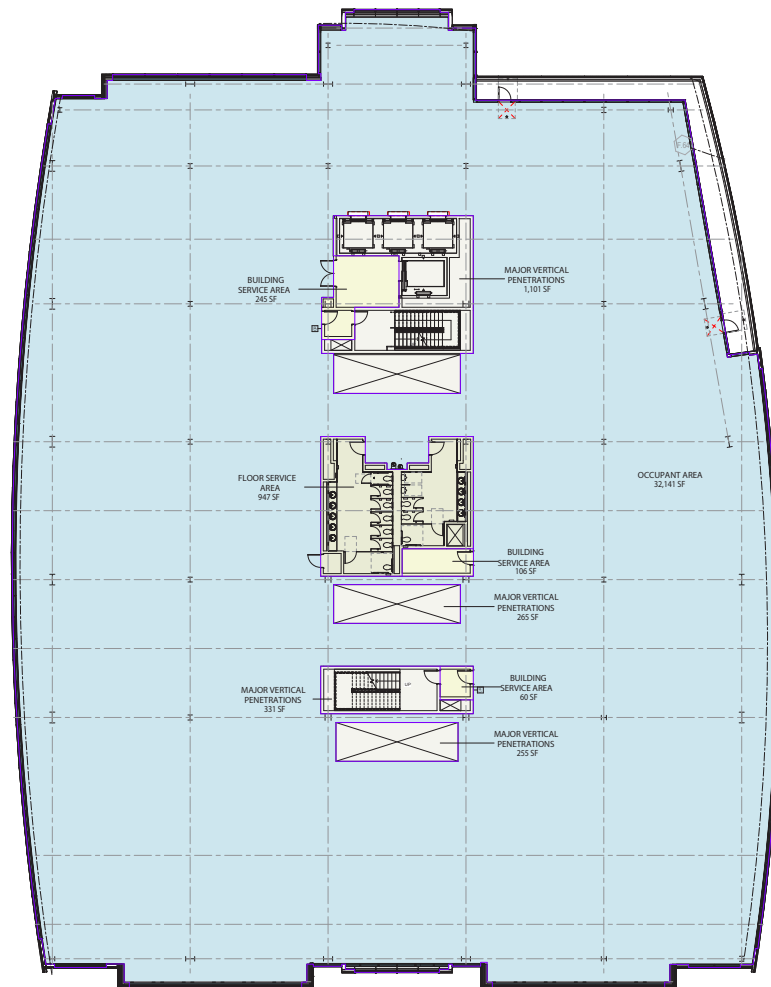
**km** **Kidder Mathews**


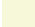

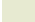
# EmeryStation West

Emeryville, CA

## Floor Plans

### TYPICAL FLOOR PLAN



-  OCCUPANT AREA
-  BUILDING SERVICE AREA
-  MAJOR VERTICAL PENETRATIONS
-  FLOOR SERVICE AREA

**Timothy Mason**  
415.229.8918  
tmason@kiddermathews.com  
LIC #00832545

**James Bennett**  
415.229.8948  
jbennett@kiddermathews.com  
LIC #00869074

**Eric Bluestein**  
415.229.8970  
ericb@kiddermathews.com  
LIC #01720416

Property owned by:

**WAREHAM**  
DEVELOPMENT

Represented by:

 **Kidder  
Mathews**

# EmeryStation West

Emeryville, CA

## Amenities



EAT / DRINK		EAT / DRINK	
1	Townhouse	31	Branch Line Bar
2	Doyle Street Café	32	The Bureau 510
3	Polaris Café	33	Ike's Love & Sandwiches
4	Trader Vic's	<b>SHOPPING</b>	
5	Emery Bay Public Market	1	Powell Street Plaza
6	Ruby's Café	2	Bay Street Shopping Center
7	Subway	3	East Bay Bridge Shopping Center
8	Subway	4	Ikea
9	Subway	5	Watergate Market
10	Rudy's Can't Fail Café	<b>HOTELS</b>	
11	Arizmendi	1	Hyatt
12	Specialty's	2	Courtyard Marriott
13	Chevy's	3	Hilton Garden Inn
14	Coffee & Snack Shop	4	Four Points by Sheraton
15	Burger King	5	Extended Stay
16	Peet's Coffee	<b>LIFESTYLE</b>	
17	California Pizza Kitchen, Pasta Pomodoro, P.F. Changs China Bistro, Fuddrucker's, Rubio's, Fresh Mex Grill, Elephant Bar	1	Namaste Personal Training
18	Summer Summer Thai Eatery	2	KGB Kiteboarding
19	Cocina Poblano	3	Square One Yoga
20	Farley's Coffee	<b>TRANSPORTATION</b>	
21	Rotten City Pizza	1	Amtrak
22	Starbucks	2	Emery-Go-Round (59th & Hollis)
23	E22 Cafe	3	Zip Car (59th & Doyle)
24	Honor Bar, Grill and Cocktails	4	City CarShare (66th & Hollis)
25	Wally's Café		
26	Café Bier		
27	Black Diamond Café		
28	Hong Kong East Ocean Seafood		
29	Prizefighter Bar		
30	Subway		

**Timothy Mason**  
415.229.8918  
tmason@kiddermathews.com  
LIC #00832545

**James Bennett**  
415.229.8948  
jbennett@kiddermathews.com  
LIC #00869074

**Eric Bluestein**  
415.229.8970  
ericb@kiddermathews.com  
LIC #01720416

Property owned by:  
**WAREHAM**  
DEVELOPMENT

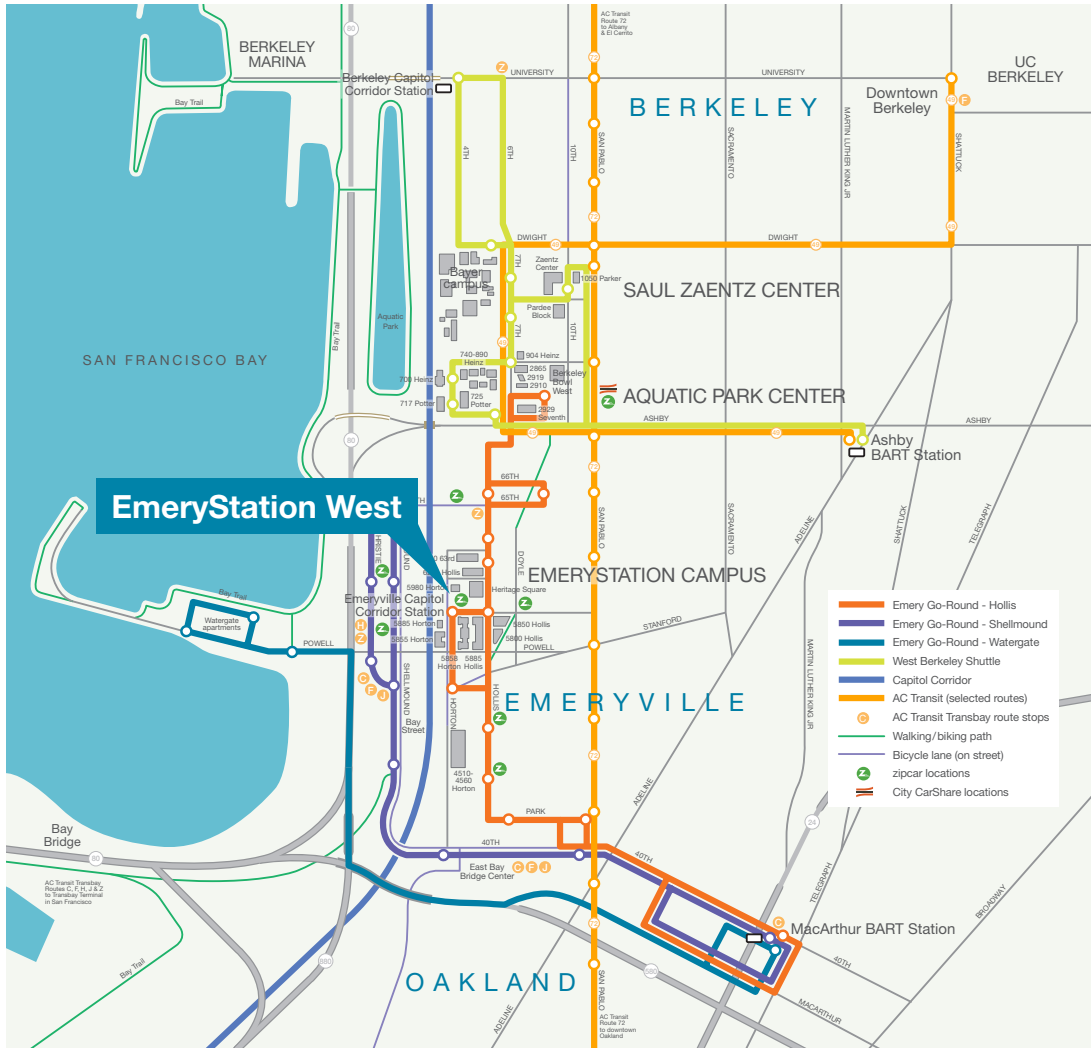
Represented by:  
**km** **Kidder Mathews**

This information supplied herein is from sources we deem reliable. It is provided without any representation, warranty or guarantee, expressed or implied as to its accuracy. Prospective Buyer or Tenant should conduct an independent investigation and verification of all matters deemed to be material, including, but not limited to, statements of income and expenses. Consult your attorney, accountant, or other professional advisor.

# EmeryStation West

Emeryville, CA

## Mass Transit Map



EmeryStation West, ideally located in the heart of the East Bay Innovation Corridor, provides numerous amenities and superior transit accommodations.

### LOCATION HIGHLIGHTS

Walking distance to a multitude of restaurants, cafes & amenities.

Direct pedestrian bridge access to the Emery Public Market.

Adjacent to the Emeryville Amtrak/Intermodal Transit Center for Amtrak Capitol Corridor commuter route between Sacramento and San Jose; and for commuters to the TransBay Center in San Francisco.

Bus bays that allow passengers to hop off train and access several last mile transit options.

Easy access to MacArthur BART station via the Emery-Go-Round shuttle.

Close proximity to I-80/I-580 and the Bay Bridge.

**Timothy Mason**  
415.229.8918  
tmason@kiddermathews.com  
LIC #00832545

**James Bennett**  
415.229.8948  
jbennett@kiddermathews.com  
LIC #00869074

**Eric Bluestein**  
415.229.8970  
ericb@kiddermathews.com  
LIC #01720416

Property owned by:  
**WAREHAM**  
DEVELOPMENT

Represented by:  
**km** **Kidder Mathews**



# EmeryStation West

Emeryville, CA

## Life Science and Research Tenants



**Timothy Mason**  
415.229.8918  
tmason@kiddermathews.com  
LIC #00832545

**James Bennett**  
415.229.8948  
jbennett@kiddermathews.com  
LIC #00869074

**Eric Bluestein**  
415.229.8970  
ericb@kiddermathews.com  
LIC #01720416

Property owned by:

**WAREHAM**  
DEVELOPMENT

Represented by:

**km** **Kidder Mathews**

This information supplied herein is from sources we deem reliable. It is provided without any representation, warranty or guarantee, expressed or implied as to its accuracy. Prospective Buyer or Tenant should conduct an independent investigation and verification of all matters deemed to be material, including, but not limited to, statements of income and expenses. Consult your attorney, accountant, or other professional advisor.

# EmeryStation West

Emeryville, CA

## EmeryStation Campus



**Timothy Mason**  
415.229.8918  
tmason@kiddermathews.com  
LIC #00832545

**James Bennett**  
415.229.8948  
jbennett@kiddermathews.com  
LIC #00869074

**Eric Bluestein**  
415.229.8970  
ericb@kiddermathews.com  
LIC #01720416

Property owned by:

**WAREHAM**  
DEVELOPMENT

Represented by:

**km** **Kidder  
Mathews**

This information supplied herein is from sources we deem reliable. It is provided without any representation, warranty or guarantee, expressed or implied as to its accuracy. Prospective Buyer or Tenant should conduct an independent investigation and verification of all matters deemed to be material, including, but not limited to, statements of income and expenses. Consult your attorney, accountant, or other professional advisor.

# EmeryStation West

Emeryville, CA

## About Wareham Development

Premier developer, owner and property manager of office space and life science research and development laboratories since 1977

4,500,000 square feet of master-planned, multi-tenanted, mixed-use campuses in Emeryville, Berkeley, Richmond, Palo Alto, and Marin County

1,750,000 square feet of state-of-the-art life sciences laboratories

1,500,000 square feet of new life sciences laboratories in development/planning

Long-term relationships with the State of California and with most of the current world-class life science, nanotechnology and bio-energy tenant roster - many since their inception. Nearly all have expanded since the initial lease and all are located within minutes from each other and major university research centers.

Largest developer in Emeryville and Berkeley, and one of the largest developers in Richmond

Strategic alliances with its diverse family of tenants, cities, equity partners, funding institutions, and the commercial brokerage community

99% occupancy during past 3 years; never below 95%

History of confident, quickly-delivered quality space and extraordinary amenities including free health clubs, shared conference facilities, landscaped gardens, commitment to important art in public places, usable terraces and balconies, terrific views, retail/service amenities

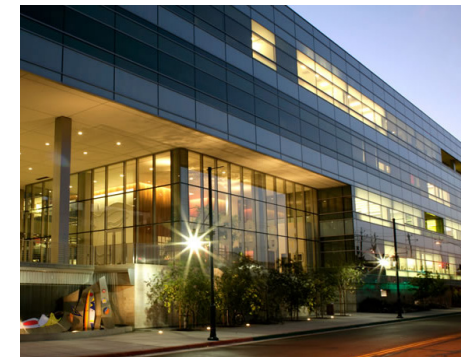
Professionally-trained property management and engineering staff providing 24/7/365 support and sophisticated reporting systems to protect the health of its properties and tenant assets

Long-term commitment to the technology corridor between Bay Bridge and Richmond-San Rafael Bridge

Proven expertise in creation and ongoing management of intermodal transportation networks linked into its campuses

Only developer to own and develop a railroad station; the Emeryville Intermodal Station development was a groundbreaking three-way alliance with Amtrak and the City of Emeryville

Founding member of the Emeryville and West Berkeley Transit Authorities



**Timothy Mason**  
415.229.8918  
tmason@kiddermathews.com  
LIC #00832545

**James Bennett**  
415.229.8948  
jbennett@kiddermathews.com  
LIC #00869074

**Eric Bluestein**  
415.229.8970  
ericb@kiddermathews.com  
LIC #01720416

Property owned by:

**WAREHAM**  
DEVELOPMENT

Represented by:

**km** **Kidder Mathews**

# EmeryStation West

Emeryville, CA

## Wareham Tenant Roster

Bayer Healthcare

Joint BioEnergy Institute

Bolt Threads

State of California:

- Dept of Justice DNA Forensic Lab

- Dept of Toxic Substances Control

Lawrence Berkeley National Laboratory

University of California at Berkeley

U.S. EPA Region IX

XOMA (U.S.) LLC

CMC ICOS Biologics

Aduro Biotech, Inc.

Newomics

LightSail Energy

Zogenix

4D Molecular Therapeutics

Symic Biomedical

Crystal Bioscience, Inc.

Amyris Biotechnologies

Stanford Health Care

Siemens Medical Solutions Diagnostics

QB3 East Bay Innovation Center

Channel Medsystems

Nexon M

Gritstone Oncology, Inc.

Eureka Pharmaceuticals

Dynavax Technologies

NovaBay Pharma

Pivot

Sangamo Biosciences

Nano Precision Medical



Total Gas & Power

Berkeley Lights

Caribou Biosciences

Diassess

MedeAnalytics

Zymergen, Inc.

### Timothy Mason

415.229.8918

tmason@kiddermathews.com

LIC #00832545

### James Bennett

415.229.8948

jbennett@kiddermathews.com

LIC #00869074

### Eric Bluestein

415.229.8970

ericb@kiddermathews.com

LIC #01720416

Property owned by:

**WAREHAM**  
DEVELOPMENT

Represented by:

**km** **Kidder  
Mathews**

# EmeryStation West

Emeryville, CA

## Wareham's Award Winning Architecture and Land-Use Planning

### EmeryStation East

AIA Citation for Architecture

---

### EmeryStation East

Best Lease Deals by *San Francisco Business Times*

---

### EmeryStation East

Best Commercial Development by *San Francisco Business Times*

---

### Point Richmond Tech Center, Ca Dept. of Justice DNA Forensic Laboratory

Western Council of Construction Consumers Award for Industrial Advanced Technology

---

### 725 Potter Street

Real Estate Deal of the Year Award for Best Suburban Office Development by *San Francisco Business Times*

---

### 2929 Seventh Street

Award of Excellence, Berkeley Design Advocates

---

### EmeryStation North

Real Estate Deal of the Year Award for Best Suburban Office Development by *San Francisco Business Times*; Gold Nugget Award

---

### EmeryStation

Real Estate Deal of the Year Award for Best Suburban Office Development by *San Francisco Business Times*

---

### Amtrak Intermodal Station

Brunel Commendation; Gold Nugget Award

---

### Pine Ridge Townhomes

Honored by American Institute of Architecture's "Show You're Green" program for excellence in green affordable housing

---

### Terraces at EmeryStation

Real Estate Deal of the Year Award for Best Suburban Residential Development by *San Francisco Business Times*; Gold Nugget Award

---



### Timothy Mason

415.229.8918  
tmason@kiddermathews.com  
LIC #00832545

### James Bennett

415.229.8948  
jbennett@kiddermathews.com  
LIC #00869074

### Eric Bluestein

415.229.8970  
ericb@kiddermathews.com  
LIC #01720416

Property owned by:

**WAREHAM**  
DEVELOPMENT

Represented by:

**km** **Kidder**  
**Mathews**