

Map data ©2020 Imagery ©2020 , Maxar Technologies, U.S. Geological Survey, USDA Farm Service Agency

## Nelson Rd & Dove Ln

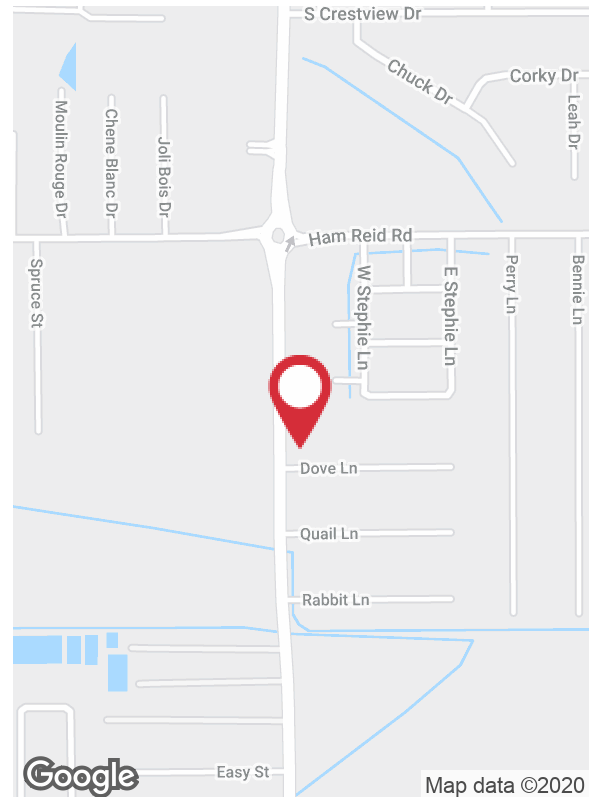
Lake Charles, Louisiana 70605

### Property Highlights

- ±1.4 acres available on Nelson Road
- Located at the corner of Nelson Road & Dove Lane, just south of Ham Reid Road and the new Rouse's development
- ±198' of frontage on Nelson Road and ±305' of frontage on Dove Lane
- ±2,500 SF home on site that could be used as an office (floor plan attached)
- 20' x 20' shop on site
- Value given primarily to land

### Sale Price

\$513,315



Map data ©2020

CALL OR EMAIL FOR MORE INFORMATION

For more information

**Andrew Vanchiere, CCIM, SIOR**

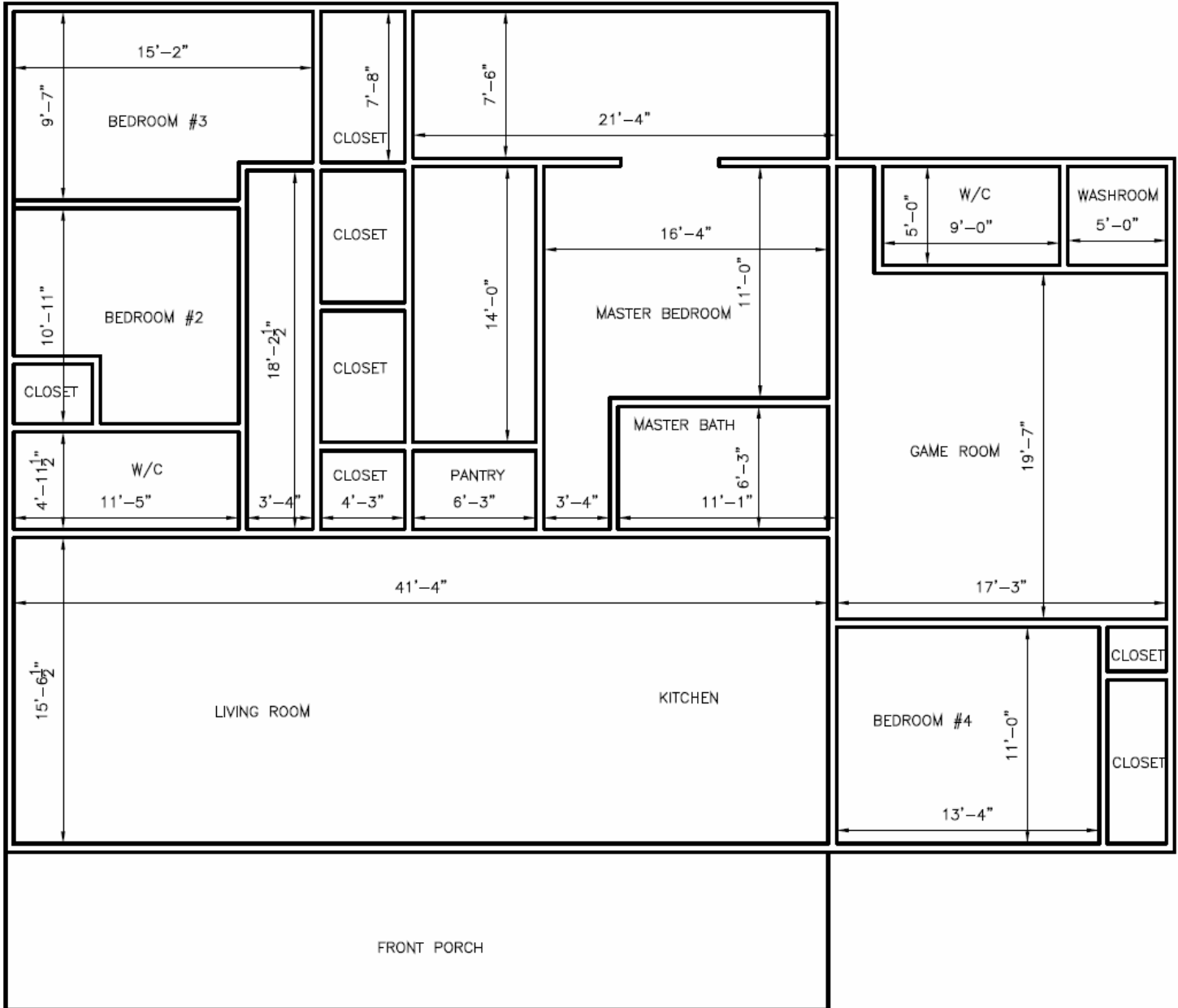
O: 337 310 7333 x214 | C: 337 304 1341  
andrewvanchiere@latterblum.com

NO WARRANTY OR REPRESENTATION, EXPRESS OR IMPLIED, IS MADE AS TO THE ACCURACY OF THE INFORMATION CONTAINED HEREIN, AND THE SAME IS SUBMITTED SUBJECT TO ERRORS, OMISSIONS, CHANGE OF PRICE, RENTAL OR OTHER CONDITIONS, PRIOR SALE, LEASE OR FINANCING, OR WITHDRAWAL WITHOUT NOTICE, AND OF ANY SPECIAL LISTING CONDITIONS IMPOSED BY OUR PRINCIPALS NO WARRANTIES OR REPRESENTATIONS ARE MADE AS TO THE CONDITION OF THE PROPERTY OR ANY HAZARDS CONTAINED THEREIN ARE ANY TO BE IMPLIED. LICENSED IN LOUISIANA.

1424 Ryan Street  
Lake Charles, LA 70601  
337 310 7333 tel  
**latterblum.com**

June 04, 2020

# Property Floor Plan



FOR ILLUSTRATION PURPOSES ONLY, NOT TO SCALE

## Location Maps

