

MANHEE MANOR PROJECT

Retail – For Lease

2800 W Olympic Blvd, Los Angeles, CA 90006

Presented by

Mia Shin

BRE #01976563

Direct (213) 251-9000 x 114

Mobile (213) 703-6486

miashin@korusre.com

Mark Hong

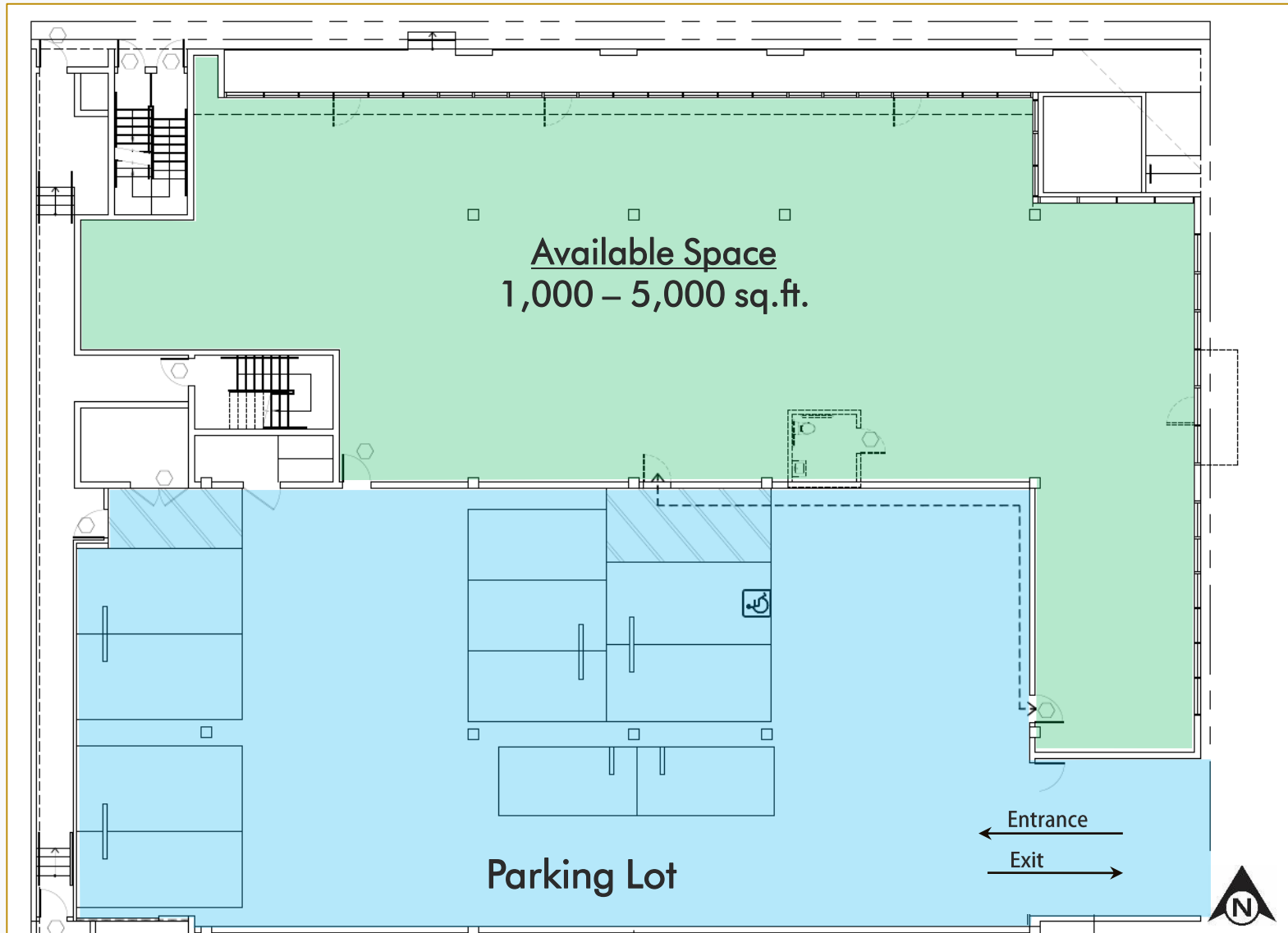
BRE #01067529

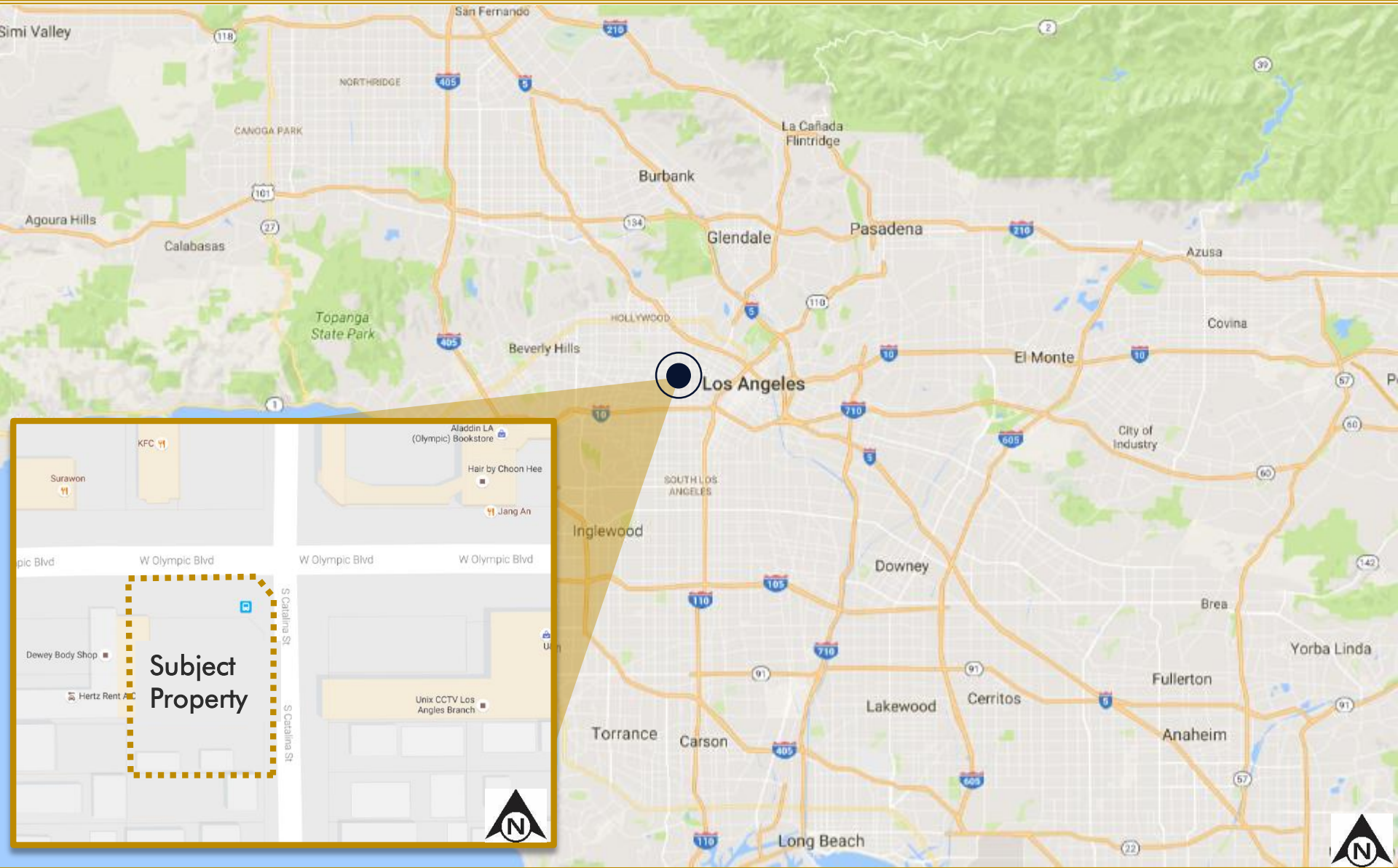
Direct (213) 251-9000

Mobile (213) 700-6780

markhong@korusre.com







Property Information

Address: 2800 W Olympic Blvd, Los Angeles, CA 90006

APN: 5078-013-028

Lease Rate: \$2.75 + NNN

Availability: 1,000 – 5,000 SF

Projected Occupancy: Spring 2018

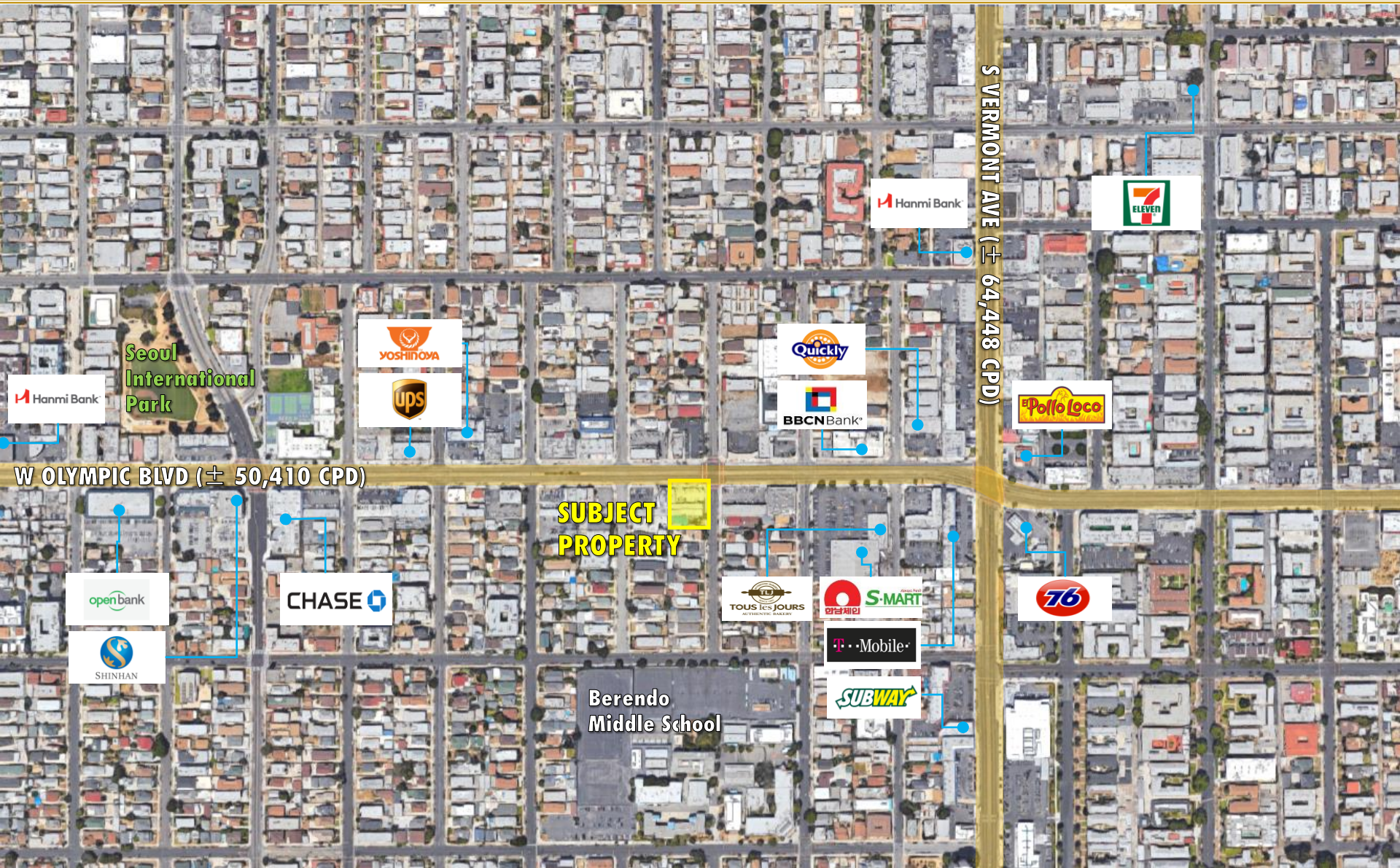
Zoning: C2-1

Parking Spaces: Ample Parking

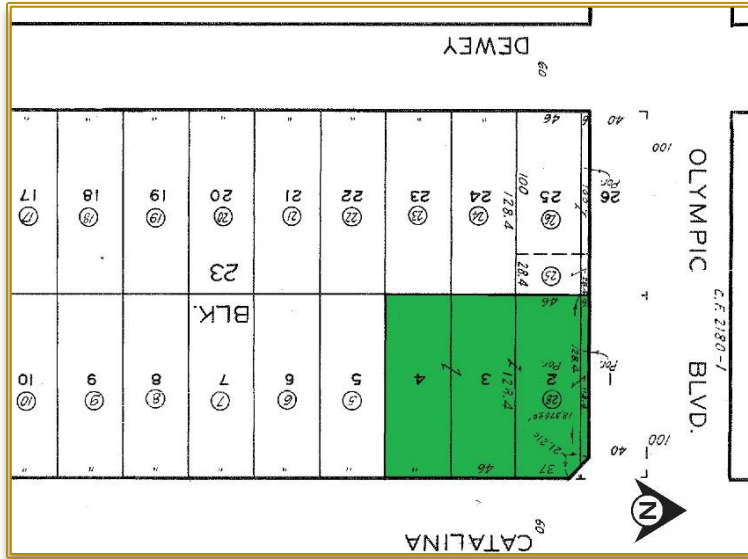
Property Highlights

- ✓ New mixed-use development.
- ✓ 70 unit apartments.
- ✓ SWC of Olympic Blvd and Catalina St.
- ✓ Ideal for banks or medical office or café.
- ✓ Located within the redevelopment zone allowing for various retail uses.





Parcel Map



Demographics

	1 Mile Radius	3 Mile Radius	5 Mile Radius
2016 Total Population	114,316	647,197	1,297,824
2016 Households	41,002	228,597	470,106
% Population Growth 2016-2021	3.57%	3.42%	3.29%
% Household Growth 2016-2021	3.52%	3.38%	3.25%
Average Household Income	\$31,599	\$33,234	\$37,269