

FOR LEASE

A105/A106: 14,688 SF - 19,573 SF

WEST PARK CORPORATE CAMPUS

1220 37TH ST NW | AUBURN, WA



## DOCK HIGH WAREHOUSE/OFFICE SPACE

### FEATURES

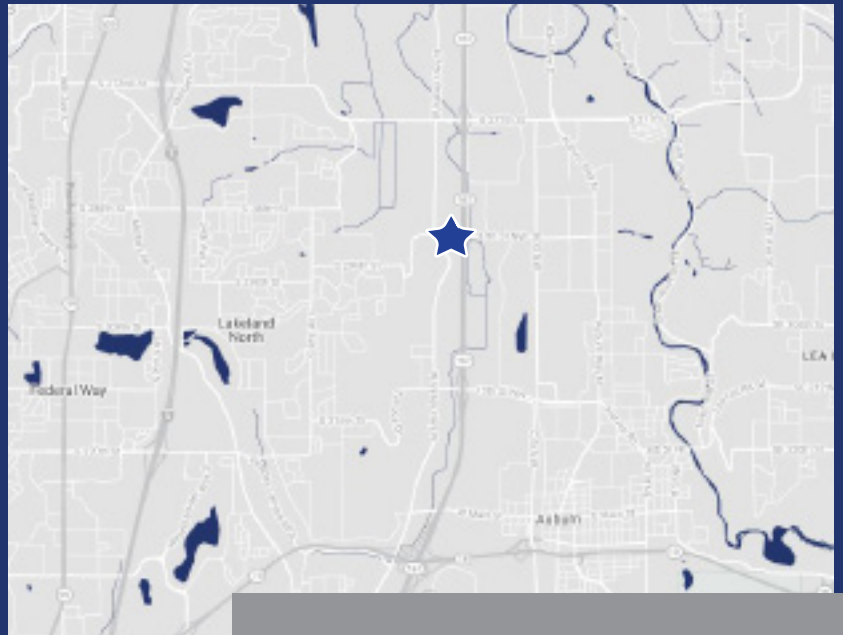
- 3 Dock high doors, 1 oversized grade level door
- 3-Phase power
- 30' Clear height
- Excellent office layout
- Sprinklered
- Excellent highway 167 frontage
- Class A image
- Excellent access and proximity to I-5, SR-18 and Hwy-167
- Built in 2000

#### Option A:

- 19,573 Total SF (10,189 SF two story office)

#### Option B:

- 14,688 Total SF (5,304 SF of office)
- Call Broker for Rates



#### EXCLUSIVELY OFFERED BY:

Arne Svendsen  
(206) 947-2885  
asvendsen@andoverco.com

Brian Bruininks, CCIM  
(206) 336-5324  
bbuininks@andoverco.com



THE ANDOVER COMPANY, INC./CORFAC INTERNATIONAL  
900 SW 16th St, Ste 100 | Renton, WA 98057 | (206) 244-0770 | [www.andoverco.com](http://www.andoverco.com)

West Park Corporate Campus is owned and operated by:



The information contained herein has been obtained from reliable sources, but is not guaranteed. A prospective buyer/tenant should verify each item relating to this property and all information contained herein.



FOR LEASE

A105/A106: 14,688 SF - 19,573 SF

WEST PARK CORPORATE CAMPUS

1220 37TH ST NW | AUBURN, WA



## ADDRESSES

- Building **A**: 1220 37th St NW
- Building **B**: 3500 W Valley Hwy N
- Building **C**: 3402 W Valley Hwy N
- Building **D**: 3320 W Valley Hwy N

### EXCLUSIVELY OFFERED BY:

**Arne Svendsen**  
(206) 947-2885  
asvendsen@andoverco.com

**Brian Bruininks, CCIM**  
(206) 336-5324  
bbruininks@andoverco.com

West Park Corporate Campus is owned and operated by:



THE ANDOVER COMPANY, INC./CORFAC INTERNATIONAL  
900 SW 16th St, Ste 100 | Renton, WA 98057 | (206) 244-0770 | [www.andoverco.com](http://www.andoverco.com)

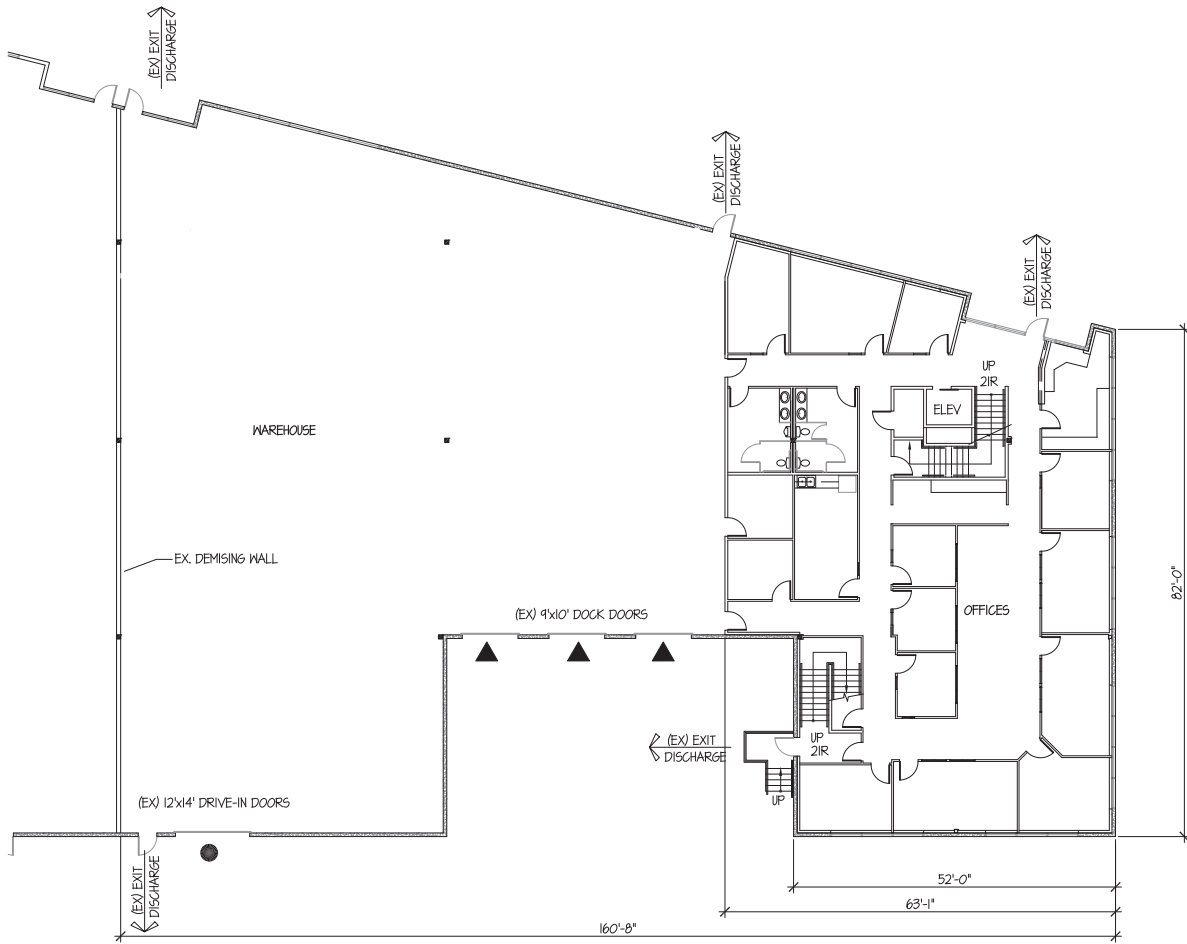
*The information contained herein has been obtained from reliable sources, but is not guaranteed. A prospective buyer/tenant should verify each item relating to this property and all information contained herein.*

FOR LEASE

A105/A106: 14,688 SF - 19,573 SF

WEST PARK CORPORATE CAMPUS

1220 37TH ST NW | AUBURN, WA



### MAIN FLOOR PLAN - STE. A105/A106

SCALE: 1/16" = 1'-0"

5,241 sf (OFFICE)  
 4,336 sf (WAREHOUSE)  
 14,633 sf (OVERALL)



#### EXCLUSIVELY OFFERED BY:

**Arne Svendsen**  
 (206) 947-2885  
 asvendsen@andoverco.com

**Brian Bruininks, CCIM**  
 (206) 336-5324  
 bbruininks@andoverco.com

West Park Corporate Campus is owned and operated by:

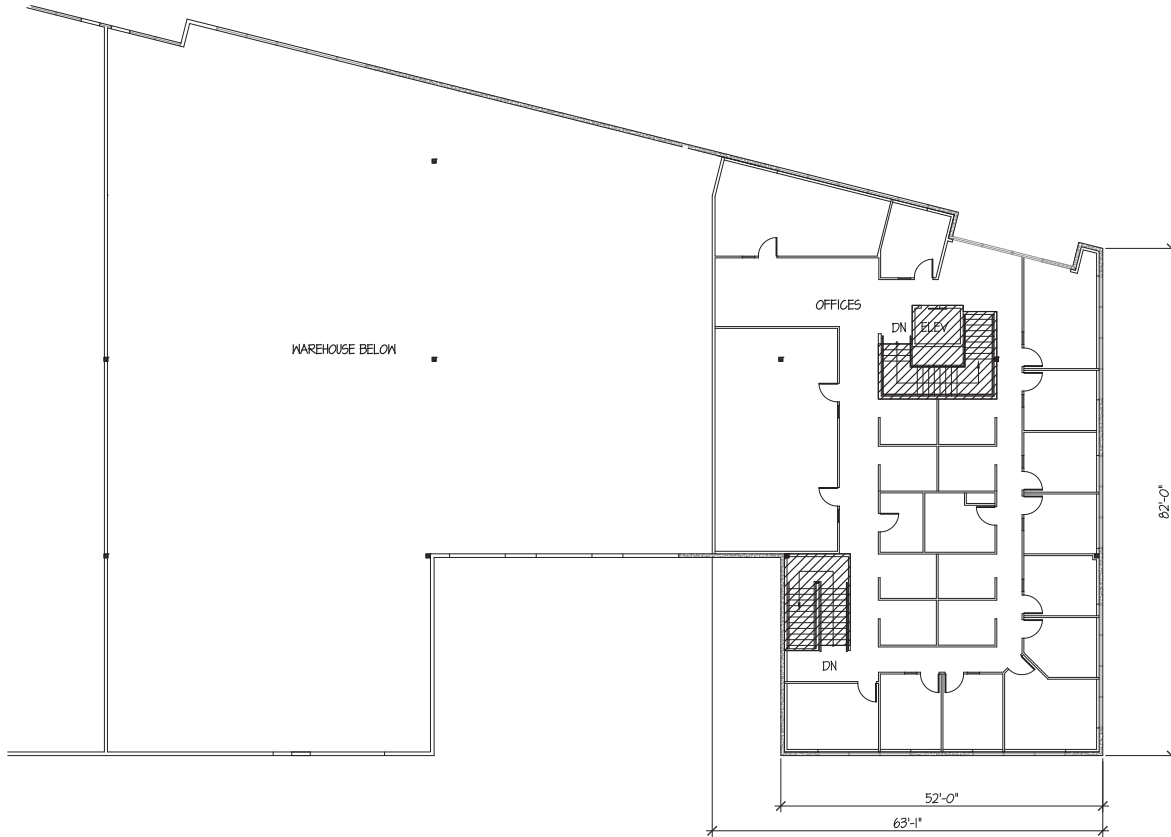


FOR LEASE

A105/A106: 14,688 SF - 19,573 SF

WEST PARK CORPORATE CAMPUS

1220 37TH ST NW | AUBURN, WA



**SECOND FLOOR PLAN - STE. A105/A106**

SCALE: 1/16" = 1'-0"

4,885 sf (OFFICE)



**EXCLUSIVELY OFFERED BY:**

**Arne Svendsen**  
(206) 947-2885  
[asvendsen@andoverco.com](mailto:asvendsen@andoverco.com)

**Brian Bruininks, CCIM**  
(206) 336-5324  
[bbruininks@andoverco.com](mailto:bbruininks@andoverco.com)

West Park Corporate Campus is owned and operated

