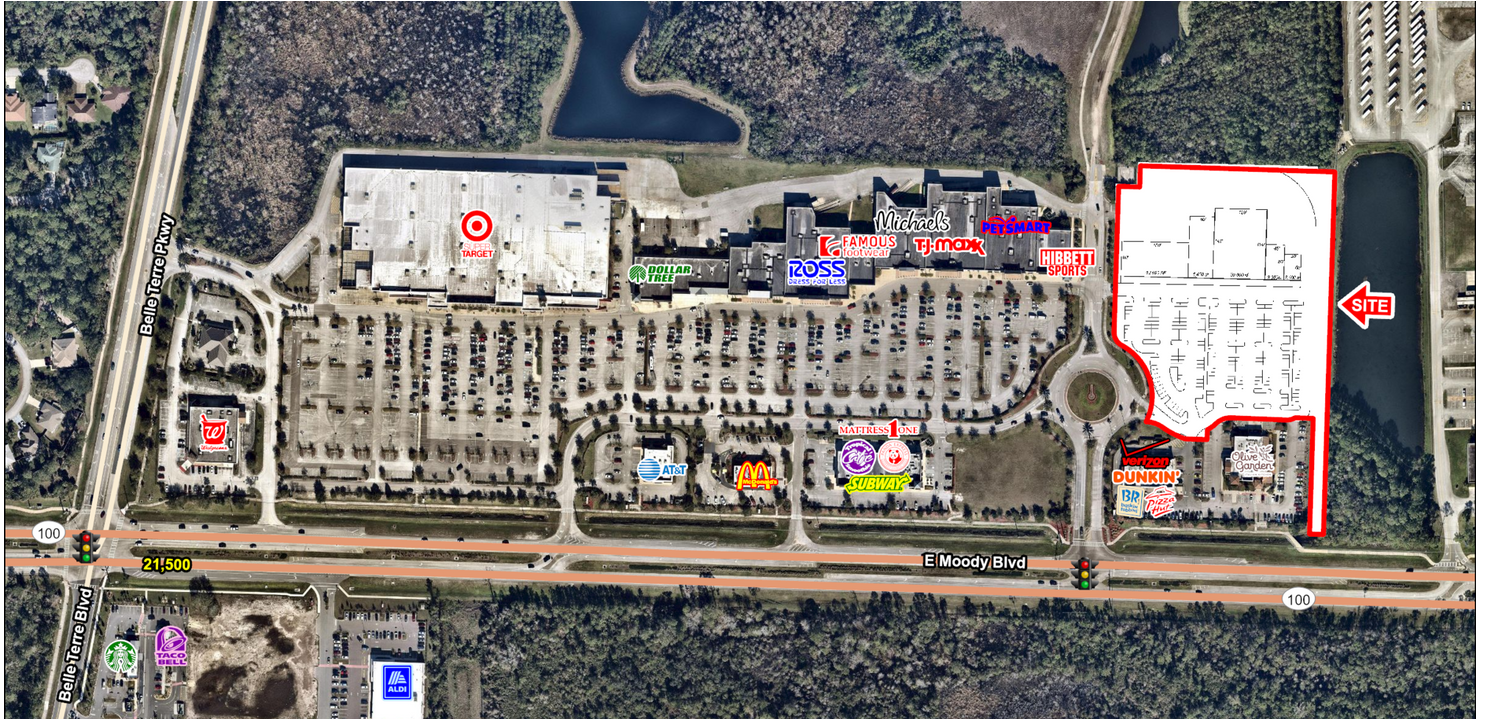


# PALM COAST LANDING EXPANSION

NE corner of Belle Terre Parkway and SR 100, Palm Coast, FL 32164

## EXECUTIVE SUMMARY



## LOCATION OVERVIEW

This site is an expansion of Palm Coast Landing Shopping Center located at the NE corner of Belle Terre Parkway and SR 100.

## PROPERTY HIGHLIGHTS

- Multiple access points at signalized intersection with a parking ratio over 7 per 1,000.
- The 99-bed AdventHealth Hospital is 2.1 miles to the east with over 1,000 employees making it the 2nd largest employer in the county.
- The Flagler County Airport is less than a mile south of Palm Coast Landing.
- Shop, junior and anchor space available with flexible sizing options.
- Shadow Anchors: Target, PetSmart, Ross Dress for Less, Michael's, TJ Maxx, and Ulta
- Traffic Counts: SR 100 - 21,500 AADT; Belle Terre Parkway - 21,500 AADT

## DEMOGRAPHICS

	3 MILES	5 MILES	7 MILES
2019 Population	26,099	59,266	88,812
# of Households	9,643	23,116	36,003
Avg HH Income (\$)	58,077	63,436	66,354



## EXCLUSIVE AGENT(S)

KELLY PULIGNANO • [kelly.pulignano@tscg.com](mailto:kelly.pulignano@tscg.com) • 904.565.2635

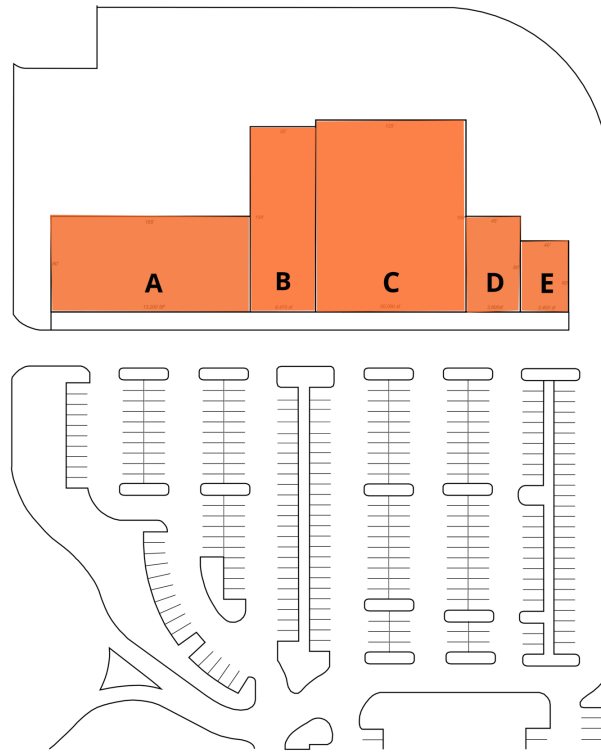
STEPHANIE MCCULLOUGH • [stephanie.mccullough@tscg.com](mailto:stephanie.mccullough@tscg.com) • 904.565.2635



# PALM COAST LANDING EXPANSION

NE corner of Belle Terre Parkway and SR 100, Palm Coast, FL 32164

## SITE PLAN

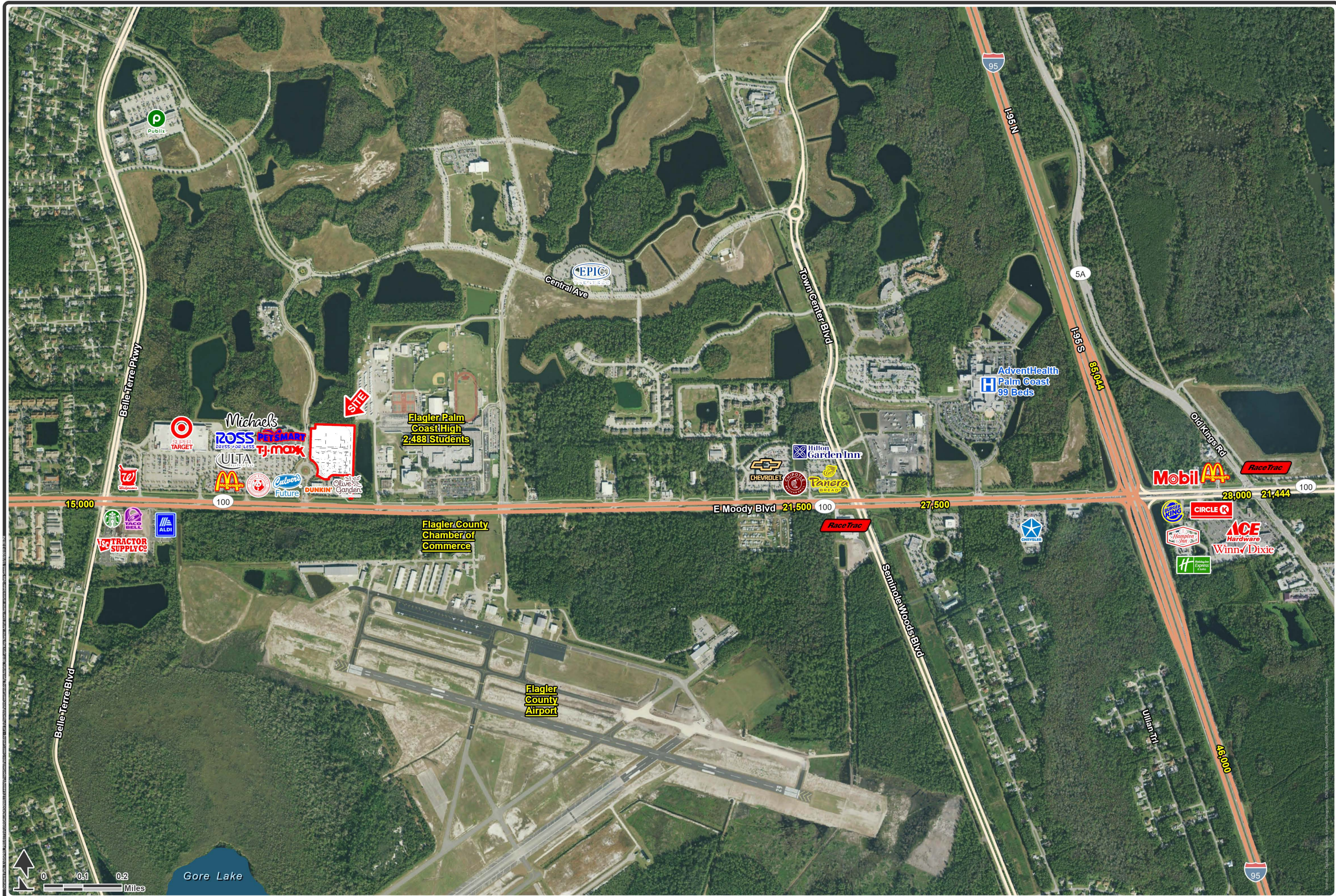


SUITE	TENANT NAME	SPACE SIZE
A	Available	12,800 SF
B	Available (Proposed Five Below)	8,460 SF
C	Available (Proposed HomeGoods)	20,000 SF
D	Available	3,600 SF
E	Available	2,400 SF

### EXCLUSIVE AGENT(S)

KELLY PULIGNANO • [kelly.pulignano@tscg.com](mailto:kelly.pulignano@tscg.com) • 904.565.2635

STEPHANIE MCCULLOUGH • [stephanie.mccullough@tscg.com](mailto:stephanie.mccullough@tscg.com) • 904.565.2635



# Palm Coast Landing Expansion

NEC of Belle Terre Pkwy and SR 100, Palm Coast, FL