



broker *E*lert

Contact | Call for a Tour: Jeff Becker 805.653-6794 ext. 201 | jbecker@beckergroup.com
Hutton Becker 805.653-6794 ext. 212 | hbecker@beckergroup.com

*EXECUTIVE OFFICES AVAILABLE
HISTORICAL ELIZABETH BARD BUILDING*

121 North Fir Street • Ventura • California

Real Estate Investments | Property Management
Real Estate Investments | Property Management

Office Address | 40 South Ash Street Ventura, CA 93001 Mailing Address | Post Office Box 23277, Ventura, CA 93002
Telephone | 805.653.6794 Facsimile | 805.653.6795 License | 01213236 Web | www.beckergroup.com

The information above has been obtained from sources believed reliable. While we do not doubt its accuracy, we have not verified it and make no guarantee, warranty or representation about it. It is your responsibility to independently confirm its accuracy and completeness. Any projections, opinions, assumption or estimates used are for example only and do not represent the current or future performance of the property. The value of this transaction to you depends on tax and other factors which should be evaluated by your tax, financial and legal advisors. You and your advisors should conduct a careful independent investigation of the property to determine to your satisfaction the stability of the property for your needs.



Executive Office Space For LEASE

Contact: Jeff Becker 805.653-6794 ext. 201 | jbecker@beckergroup.com
Hutton Becker 805.653-6794 ext. 212 | hbecker@beckergroup.com

121 North Fir Street
Ventura • California

\$1.95 psf NNN [estimated @ \$.43]

- Executive Suite F | 3,598 sq.ft.
- Office Layouts include Reception, Kitchen, Individual Offices, Private Restrooms, Ocean View Balcony – Suite F
- National Historic Landmark | City Landmark #19
Mission Revival Architecture
- The Elizabeth Bard Building is located in Historic Downtown Ventura's Prestigious Hillside with Spectacular Views of the Ocean and Channel Islands



Downtown Walkable to Restaurants, Shopping, Ventura Mission, Museum of Ventura County, Ventura City Hall, the Beach, MetroLink, State County Fairgrounds + more

Real Estate Investments | Property Management
Real Estate Investments | Property Management

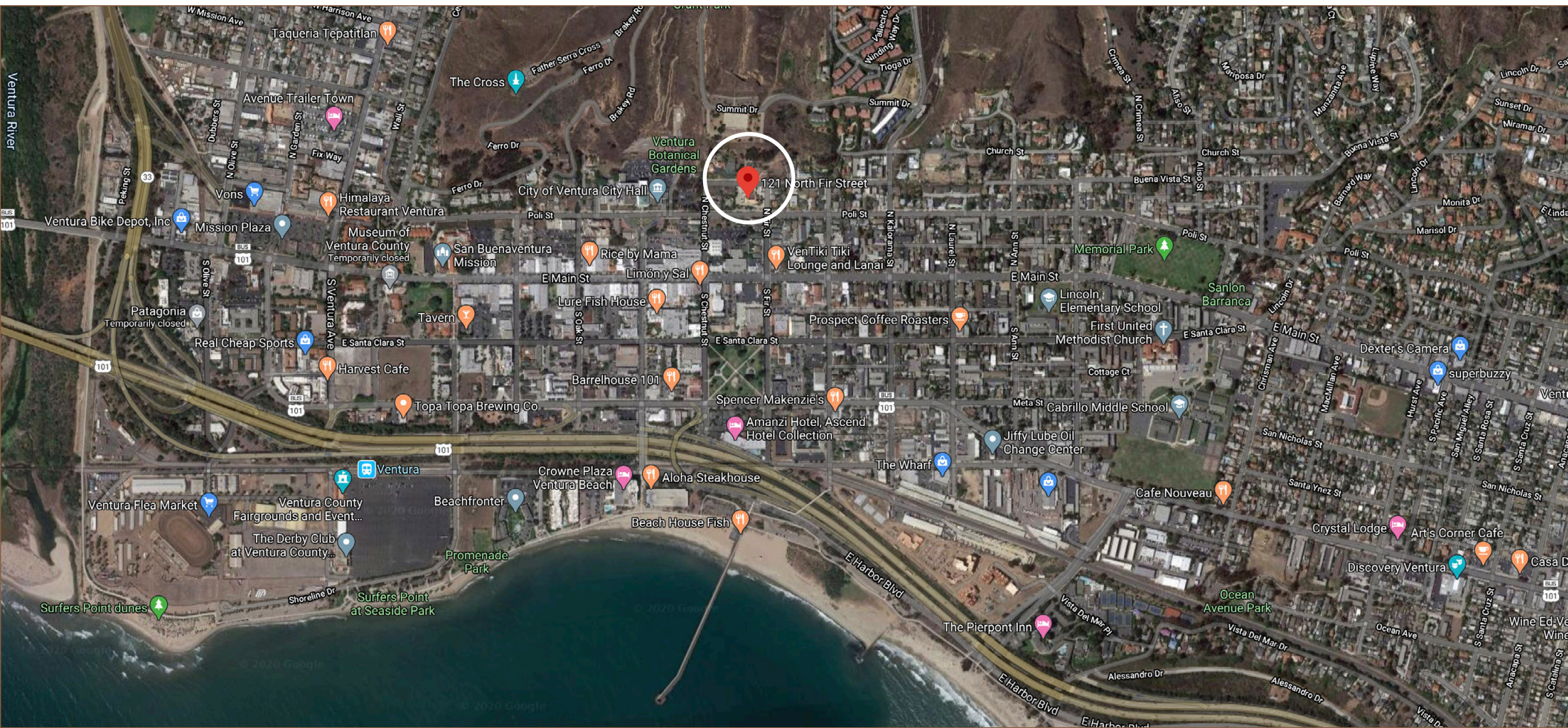
Office Address | 40 South Ash Street Ventura, CA 93001 Mailing Address | Post Office Box 23277, Ventura, CA 93002
Telephone | 805.653.6794 Facsimile | 805.653.6795 License | 01213236 Web | www.beckergroup.com

The information above has been obtained from sources believed reliable. While we do not doubt its accuracy, we have not verified it and make no guarantee, warranty or representation about it. It is your responsibility to independently confirm its accuracy and completeness. Any projections, opinions, assumption or estimates used are for example only and do not represent the current or future performance of the property. The value of this transaction to you depends on tax and other factors which should be evaluated by your tax, financial and legal advisors. You and your advisors should conduct a careful independent investigation of the property to determine to your satisfaction the stability of the property for your needs.



121 North Fir Street

aerial map



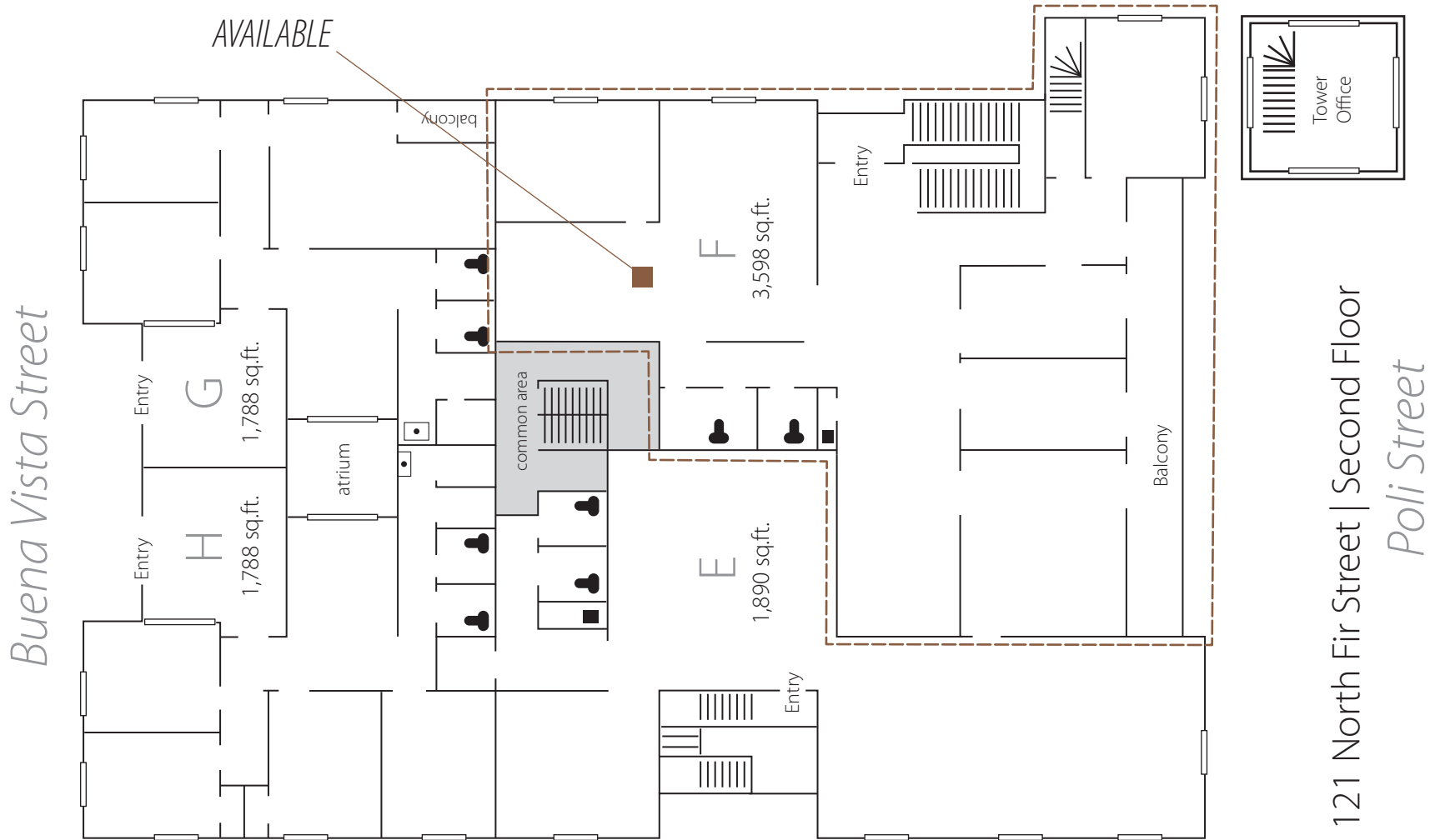
Real Estate Investments | Property Management
Real Estate Investments | Property Management

Office Address | 40 South Ash Street Ventura, CA 93001 Mailing Address | Post Office Box 23277, Ventura, CA 93002
Telephone | 805.653.6794 Facsimile | 805.653.6795 License | 01213236 Web | www.beckergroup.com

The information above has been obtained from sources believed reliable. While we do not doubt its accuracy, we have not verified it and make no guarantee, warranty or representation about it. It is your responsibility to independently confirm its accuracy and completeness. Any projections, opinions, assumption or estimates used are for example only and do not represent the current or future performance of the property. The value of this transaction to you depends on tax and other factors which should be evaluated by your tax, financial and legal advisors. You and your advisors should conduct a careful independent investigation of the property to determine to your satisfaction the stability of the property for your needs.

121 North Fir Street

floor plan





121 North Fir Street

suite f entrance



Real Estate Investments | Property Management
Real Estate Investments | Property Management

Office Address | 40 South Ash Street Ventura, CA 93001

Mailing Address | Post Office Box 23277, Ventura, CA 93002

Telephone | 805.653.6794

Facsimile | 805.653.6795

License | 01213236

Web | www.beckergroup.com

The information above has been obtained from sources believed reliable. While we do not doubt its accuracy, we have not verified it and make no guarantee, warranty or representation about it. It is your responsibility to independently confirm its accuracy and completeness. Any projections, opinions, assumption or estimates used are for example only and do not represent the current or future performance of the property. The value of this transaction to you depends on tax and other factors which should be evaluated by your tax, financial and legal advisors. You and your advisors should conduct a careful independent investigation of the property to determine to your satisfaction the stability of the property for your needs.



121 North Fir Street

balcony view – suite f



Real Estate Investments | Property Management
Real Estate Investments | Property Management

Office Address | 40 South Ash Street Ventura, CA 93001 Mailing Address | Post Office Box 23277, Ventura, CA 93002
Telephone | 805.653.6794 Facsimile | 805.653.6795 License | 01213236 Web | www.beckergroup.com

The information above has been obtained from sources believed reliable. While we do not doubt it's accuracy, we have not verified it and make no guarantee, warranty or representation about it. It is your responsibility to independently confirm it's accuracy and completeness. Any projections, opinions, assumption or estimates used are for example only and do not represent the current or future performance of the property. The value of this transaction to you depends on tax and other factors which should be evaluated by your tax, financial and legal advisors. You and your advisors should conduct a careful independent investigation of the property to determine to your satisfaction the stability of the property for your needs.



Real Estate Investments | Property Management
Real Estate Investments | Property Management

Office Address | 40 South Ash Street Ventura, CA 93001

Mailing Address | Post Office Box 23277, Ventura, CA 93002

Telephone | 805.653.6794

Facsimile | 805.653.6795

License | 01213236

Web | www.beckergrp.com

The information above has been obtained from sources believed reliable. While we do not doubt its accuracy, we have not verified it and make no guarantee, warranty or representation about it. It is your responsibility to independently confirm its accuracy and completeness. Any projections, opinions, assumption or estimates used are for example only and do not represent the current or future performance of the property. The value of this transaction to you depends on tax and other factors which should be evaluated by your tax, financial and legal advisors. You and your advisors should conduct a careful independent investigation of the property to determine to your satisfaction the stability of the property for your needs.



121 North Fir Street

images – suite f



Real Estate Investments | Property Management
Real Estate Investments | Property Management

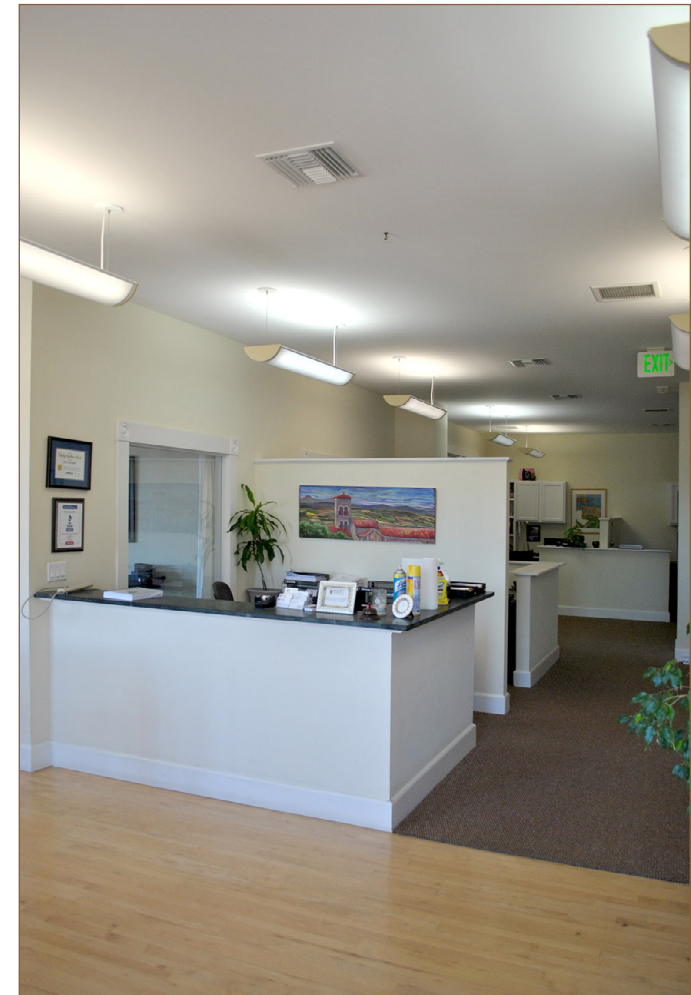
Office Address | 40 South Ash Street Ventura, CA 93001 Mailing Address | Post Office Box 23277, Ventura, CA 93002
Telephone | 805.653.6794 Facsimile | 805.653.6795 License | 01213236 Web | www.beckergrp.com

The information above has been obtained from sources believed reliable. While we do not doubt its accuracy, we have not verified it and make no guarantee, warranty or representation about it. It is your responsibility to independently confirm its accuracy and completeness. Any projections, opinions, assumption or estimates used are for example only and do not represent the current or future performance of the property. The value of this transaction to you depends on tax and other factors which should be evaluated by your tax, financial and legal advisors. You and your advisors should conduct a careful independent investigation of the property to determine to your satisfaction the stability of the property for your needs.



121 North Fir Street

images – suite f



Real Estate Investments | Property Management
Real Estate Investments | Property Management

Office Address | 40 South Ash Street Ventura, CA 93001

Mailing Address | Post Office Box 23277, Ventura, CA 93002

Telephone | 805.653.6794

Facsimile | 805.653.6795

License | 01213236

Web | www.beckergroup.com

The information above has been obtained from sources believed reliable. While we do not doubt it's accuracy, we have not verified it and make no guarantee, warranty or representation about it. It is your responsibility to independently confirm it's accuracy and completeness. Any projections, opinions, assumption or estimates used are for example only and do not represent the current or future performance of the property. The value of this transaction to you depends on tax and other factors which should be evaluated by your tax, financial and legal advisors. You and your advisors should conduct a careful independent investigation of the property to determine to your satisfaction the stability of the property for your needs.



121 North Fir Street

images – suite f



Real Estate Investments | Property Management
Real Estate Investments | Property Management

Office Address | 40 South Ash Street Ventura, CA 93001 Mailing Address | Post Office Box 23277, Ventura, CA 93002
Telephone | 805.653.6794 Facsimile | 805.653.6795 License | 01213236 Web | www.beckergrp.com

The information above has been obtained from sources believed reliable. While we do not doubt it's accuracy, we have not verified it and make no guarantee, warranty or representation about it. It is your responsibility to independently confirm it's accuracy and completeness. Any projections, opinions, assumption or estimates used are for example only and do not represent the current or future performance of the property. The value of this transaction to you depends on tax and other factors which should be evaluated by your tax, financial and legal advisors. You and your advisors should conduct a careful independent investigation of the property to determine to your satisfaction the stability of the property for your needs.





121 North Fir Street

balcony view – suite f



Real Estate Investments | Property Management
Real Estate Investments | Property Management

Office Address | 40 South Ash Street Ventura, CA 93001 Mailing Address | Post Office Box 23277, Ventura, CA 93002
Telephone | 805.653.6794 Facsimile | 805.653.6795 License | 01213236 Web | www.beckergrp.com

The information above has been obtained from sources believed reliable. While we do not doubt it's accuracy, we have not verified it and make no guarantee, warranty or representation about it. It is your responsibility to independently confirm it's accuracy and completeness. Any projections, opinions, assumption or estimates used are for example only and do not represent the current or future performance of the property. The value of this transaction to you depends on tax and other factors which should be evaluated by your tax, financial and legal advisors. You and your advisors should conduct a careful independent investigation of the property to determine to your satisfaction the stability of the property for your needs.