



RETAIL SPACE FOR LEASE
777 SF UNIT AVAILABLE
555 WAVERLY AVENUE | BROOKLYN, NY



BRIAN KATZ

CEO
briankatz@dkatz.com
(212) 257-4995

DAVID YABLON

Broker
davidyablon@dkatz.com
(212) 433-1986



HIGHLIGHTS

Prime retail space in a residential building located between Prospect Heights and Clinton Hill

777 SF unit available at the corner of Waverly Avenue and Atlantic Avenue

Across from Pacific Park, home to ample residential, retail and restaurant options

Neighbors include Capital One, Otway, The Mac Shack, Chase, Key Food and Bergen Bagels

HALF MILE DEMOGRAPHICS

41,989

Population

20,303

Households

7,423

Daytime
Employees

\$118,908

Avg HH Income

\$58.54 M

Spent Annually
Apparel

\$92.14 M

Spent Annually
Entertainment

\$57.3 M

Spent Annually
Furnishings

\$235.41 M

Spent Annually
Dining

TRANSPORTATION

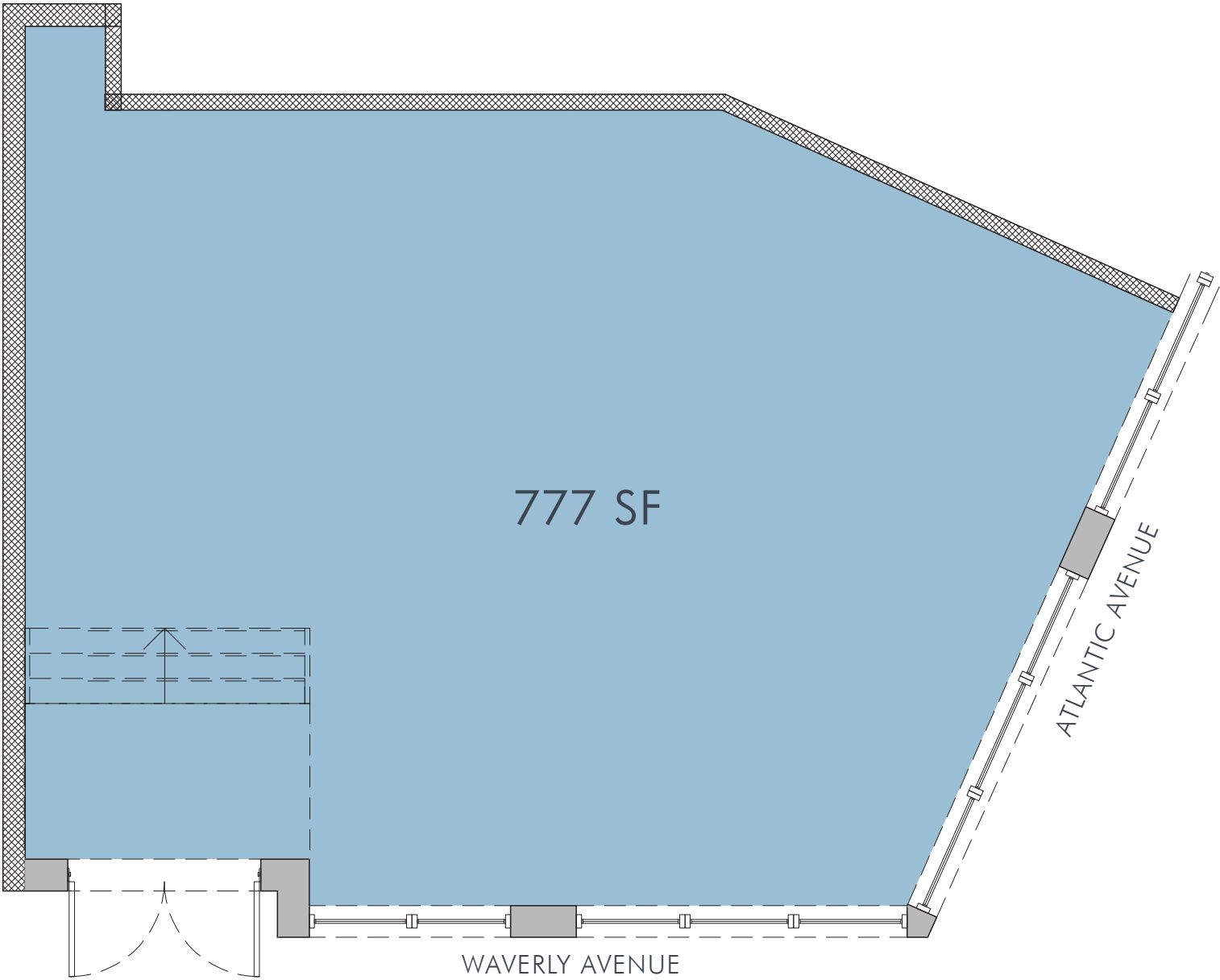
24 MILLION SUBWAY RIDERS ANNUALLY

Clinton-Washington Avenue - 2,178,439

Franklin Avenue - 2,051,171

Nostrand Avenue - 5,609,408





KATZ & ASSOCIATES



AMENITIES | NEIGHBORHOOD

555 WAVERLY AVENUE
BROOKLYN, NY