

# PARKRIDGE FOUR

10375 Park Meadows Drive, Lone Tree, CO 80124



## PROPERTY HIGHLIGHTS

- SUITES FROM 2,400 - 18,064 SF
- ON-SITE DELI, TRAINING/CONFERENCE CENTER, FITNESS CENTER
- INCREDIBLE MOUNTAIN VIEWS
- LEED GOLD
- EASY ACCESS TO I-25 AND C-470
- WALK TO LINCOLN LIGHT RAIL STATION
- EXECUTIVE COVERED PARKING
- 4.4:1,000 PARKING
- FITWEL RATED



**For leasing information please contact:**

Matt Smith | 303.996.8460  
msmith@premisescommercial.com

Johnny Neff | 720.743.6399  
jneff@premisescommercial.com

**PREMISES**  
PREMISES COMMERCIAL REAL ESTATE LLC

WWW.PREMISESCOMMERCIAL.COM

# PARKRIDGE FOUR

10375 Park Meadows Drive, Lone Tree, CO 80124

## AVAILABLE SUITES

Suite 125  
5,618 sf

Suite 155  
2,909 sf

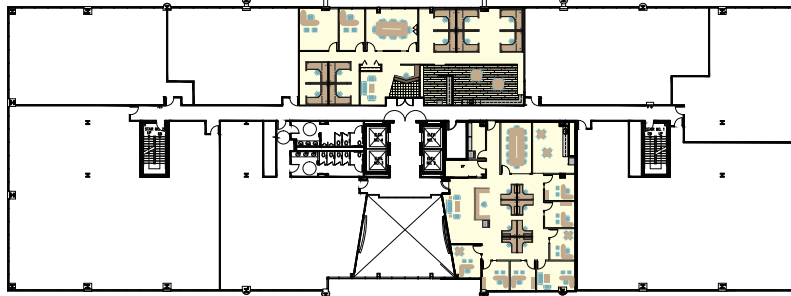


First Floor

Suite 240  
3,523 sf

Suite 120  
3,368 sf

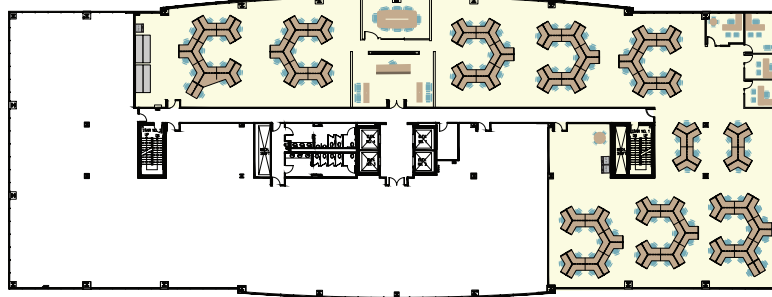
Suite 150  
4,662 sf



Second Floor

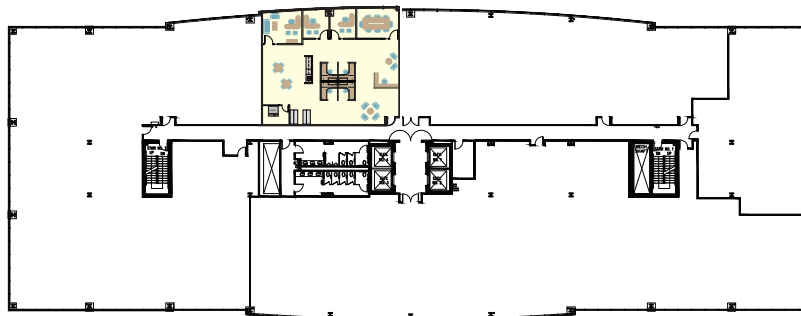
Suite 280  
3,455 sf

Suite 350  
18,064 sf



Third Floor

Suite 450  
2,470 sf



Fourth Floor

[WWW.PREMISESCOMMERCIAL.COM](http://WWW.PREMISESCOMMERCIAL.COM)

The information contained herein, while not guaranteed, has been secured from sources we believe to be reliable. Different brokerage relationships are available which include Seller/Landlord Agency, Buyer/Tenant Agency and Transaction Broker. Premises Commercial Real Estate, LLC is acting in this capacity as Landlord's/Sublessor's Agent, unless otherwise agreed, and owes its fiduciary allegiance to Landlord/Sublessor as defined by Colorado Real Estate Commission.