

AVAILABLE FOR LEASE

# 2 BRYANT STREET

SAN FRANCISCO, CA 94105



CBRE

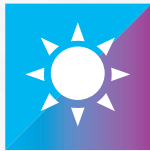




## BUILDING FEATURES



Outstanding  
Bay Views



Operable  
Windows with  
Great Natural Light



Covered Parking  
Available



Walking distance  
to BART, CalTrain,  
ferry terminal,  
Transbay Transit  
Center and other  
Public Transit



Open Floor Plan  
with Two  
Conference Rooms  
& Large Kitchen



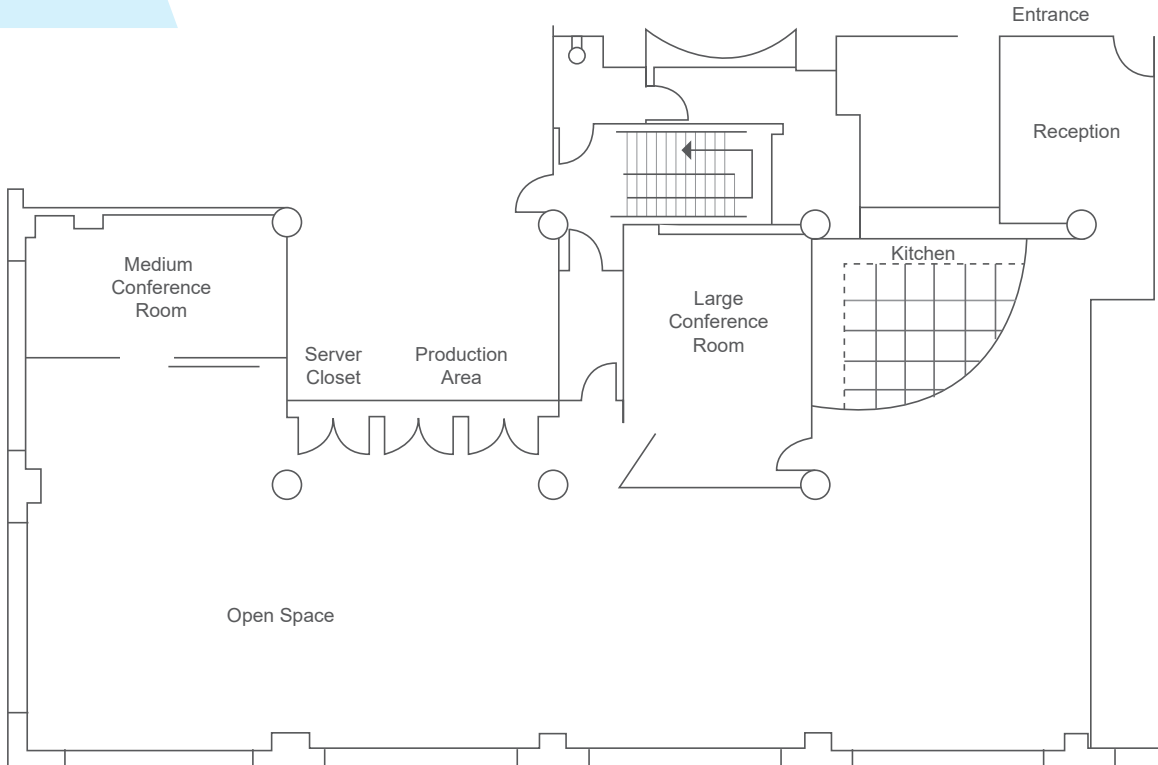
## AVAILABLE SPACE

SUITE	SIZE/RSF	AVAILABILITY	LEASE TERM	RENTAL RATE
Suite 220	4,961	Now	4+ year term	Negotiable
Suite 240*	4,490	3/1/2019	4+ year term	Negotiable

\*This can be leased separately or combined with Suite 220 for a total of 9,451 SF.

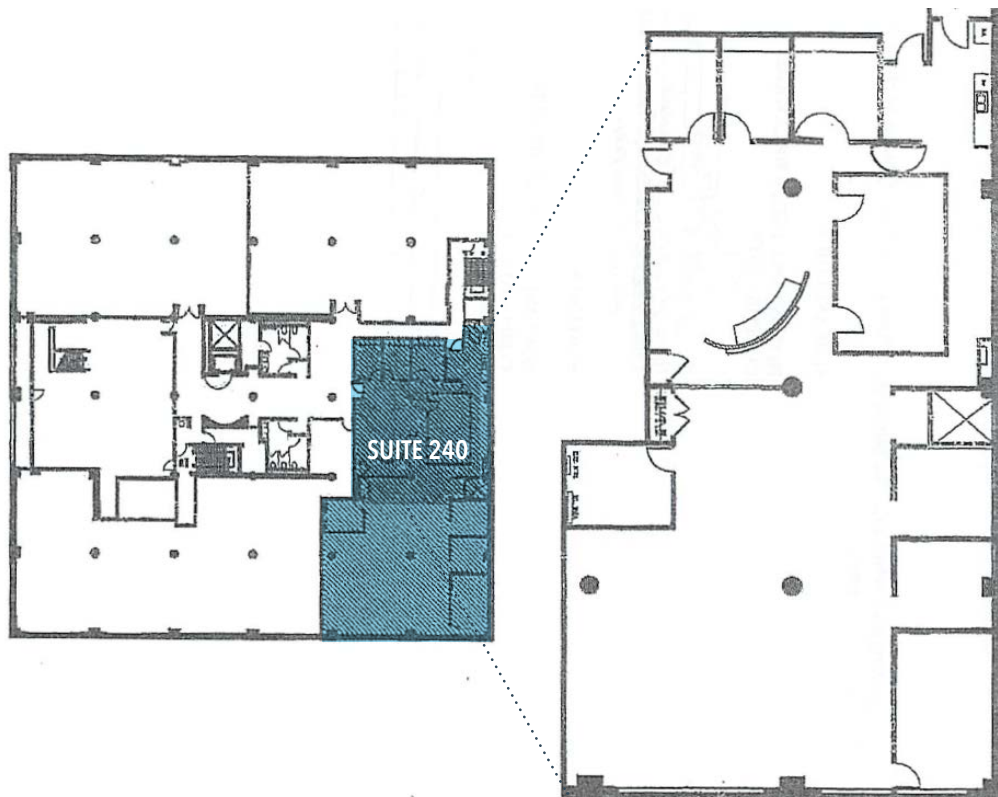
# FLOOR PLANS

SUITE 220 | 4,961 RSF



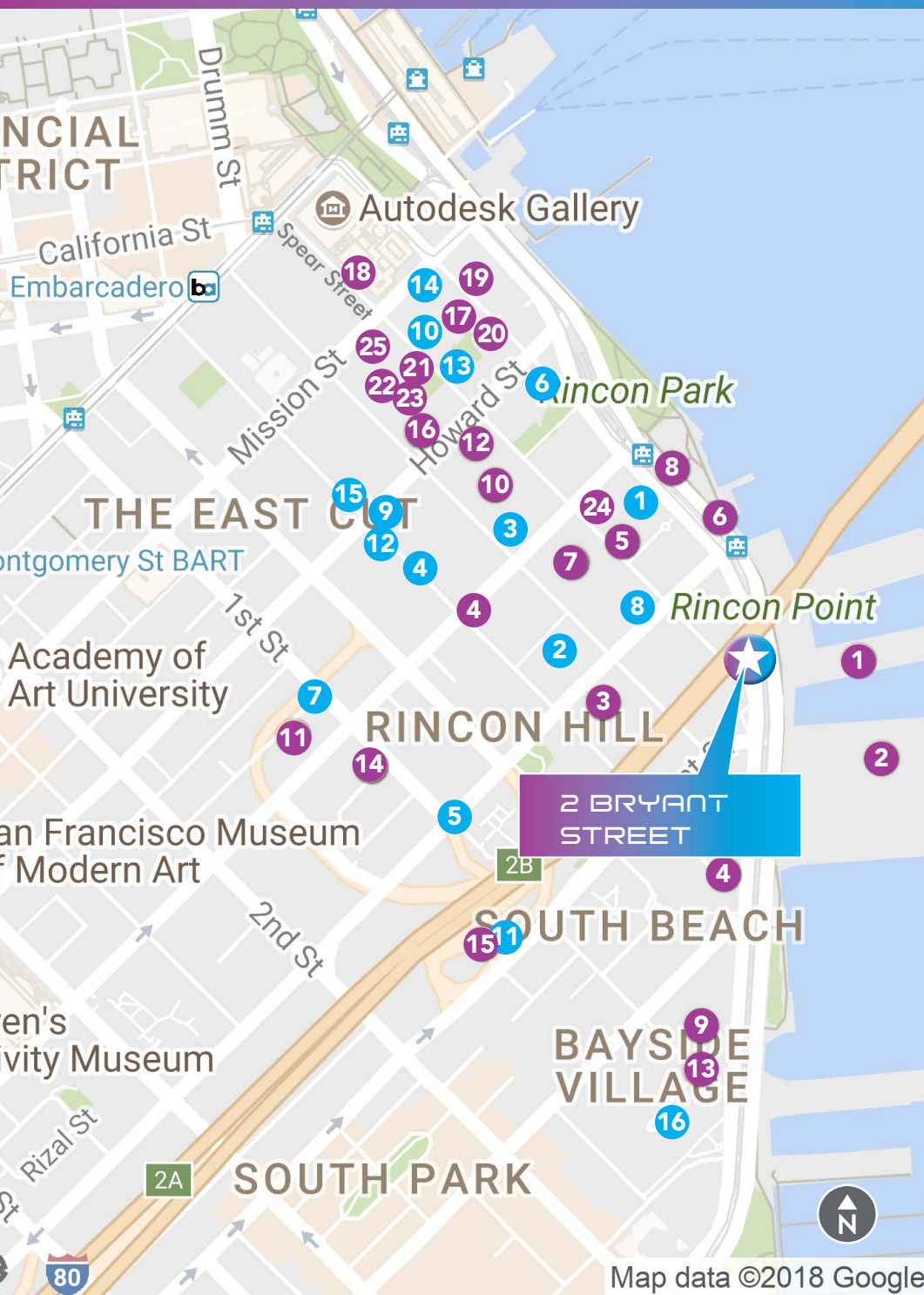
SUITE 240 | 4,490 RSF

*(Can be leased separately or combined with Suite 220 for a total of 9,451 SF)*





# AMENITIES MAP



## RESTAURANTS

- |                                     |                         |
|-------------------------------------|-------------------------|
| 1. Hi Dive Bar                      | 15. Miss Saigon         |
| 2. Red's Java House                 | 16. Bar Association     |
| 3. Fistful of Tacos                 | 17. Rincon Center       |
| 4. Cisco Umbrella AirStream Trailer | 18. Super Duper Burger  |
| 5. Palomino                         | 19. The Organic Coup    |
| 6. Waterbar                         | 20. Eatsa               |
| 7. Prospect                         | 21. Lee's Deli          |
| 8. EPIC Steak                       | 22. Specialty's         |
| 9. Delancey Street Restaurant       | 23. Heyday              |
| 11. Spicy Garden Restaurant         | 24. Prospect            |
| 12. Sweet Joanna's Cafe             | 25. Working Girl's Café |
| 13. Harvey's Place Grill & Deli     |                         |
| 14. Local Kitchen & Wine Merchant   |                         |



## COFFEE SHOPS

- |                                    |
|------------------------------------|
| 1. Gabby Cafe                      |
| 2. Warehouse 6 Cafe                |
| 3. Ada's Cafe                      |
| 4. Fairly Villie                   |
| 5. Philz Coffee                    |
| 6. Coffee Con                      |
| 7. Starbucks                       |
| 8. CrossRoads Cafe                 |
| 9. Howard Street Coffee Roastery   |
| 10. Joe & The Juice                |
| 11. Heyday Organic Cafe and Bakery |
| 12. Corneria                       |
| 13. Prima Cafe                     |
| 14. Lee's Deli                     |
| 15. Peet's Coffee                  |
| 16. Starbucks                      |

### FOR LEASING INFORMATION, CONTACT:

**MARK GEISREITER**  
Executive Vice President  
Lic. 00889721  
+1 415 291 8429  
mark.geisreiter@cbre.com

**JON HUNT**  
Associate  
Lic. 01935024  
+1 415 772 0231  
jon.hunt@cbre.com

**CBRE, INC.**  
415 Mission Street  
46th Floor  
San Francisco, CA 94111  
www.cbre.com/sfdt

© 2018 CBRE, Inc. This information has been obtained from sources believed reliable. We have not verified it and make no guarantee, warranty or representation about it. Any projections, opinions, assumptions or estimates used are for example only and do not represent the current or future performance of the property. You and your advisors should conduct a careful, independent investigation of the property to determine to your satisfaction the suitability of the property for your needs. CBRE and the CBRE logo are service marks of CBRE, Inc. and/or its affiliated or related companies in the United States and other countries. All other marks displayed on this document are the property of their respective owners. Photos herein are the property of their respective owners and use of these images without the express written content of the owner is prohibited. PM\_STUDIO\_June\_2018

**CBRE**