

FOR LEASE > 2,000 SF

SCRIPPS HILL SHOPPING CENTER

9969 MIRA MESA BLVD, #7 | SAN DIEGO, CA 92126



PROJECT FEATURES

- Outstanding North San Diego location on the I-15 Corridor
- Other tenants include: Filippis Pizza Grotto, Don Lucios Mexican Food, and C's Deli
- Well located to serve the communities of Scripps Ranch and Mira Mesa
- Easy access from Interstate 15
- Dense daytime worker population

AVERAGE DAILY TRAFFIC COUNT

278,000	Interstate 15
40,000	Mira Mesa Blvd



2014 ESTIMATED DEMOGRAPHICS

Distance	Population	Avg. Household Income	Daytime Workers
1 Mile	13,630	\$113,520	8,702
2 Miles	65,871	\$108,912	23,465
3 Miles	124,839	\$112,479	50,809

For more information **CONTACT:**

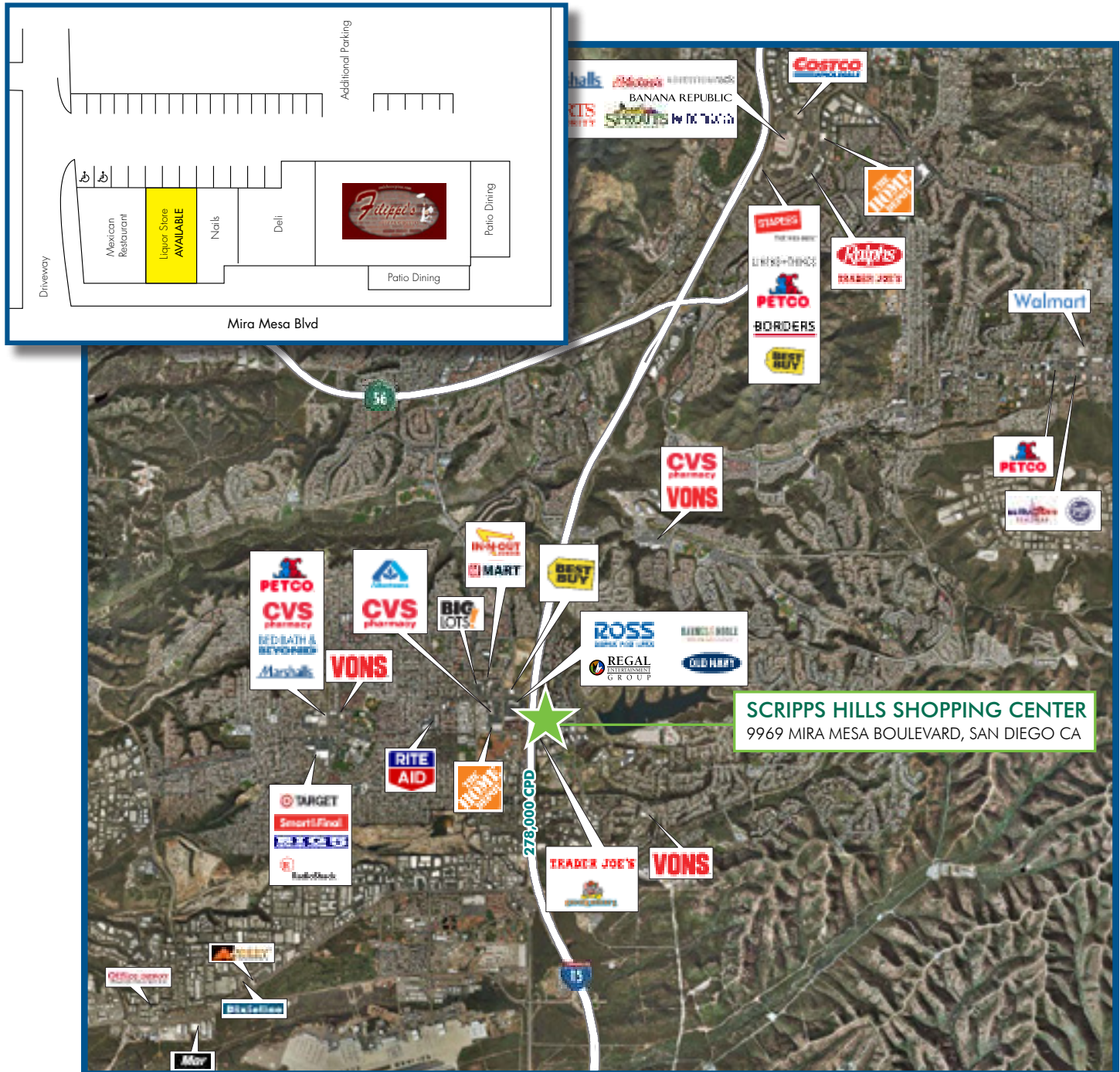
PETER ORTH
858.677.5382
peter.orth@colliers.com
Lic. No. 00448913

COLLIERS INTERNATIONAL
4660 La Jolla Village Drive, Suite 100
San Diego, CA 92122
www.colliers.com

FOR LEASE > 2,000 SF

SCRIPPS HILL SHOPPING CENTER

9969 MIRA MESA BLVD, #7 | SAN DIEGO, CA 92126



This document has been prepared by Colliers International for advertising and general information only. Colliers International makes no guarantees, representations or warranties of any kind, expressed or implied, regarding the information including, but not limited to, warranties of content, accuracy and reliability. Any interested party should undertake their own inquiries as to the accuracy of the information. Colliers International excludes unequivocally all inferred or implied terms, conditions and warranties arising out of this document and excludes all liability for loss and damages arising there from. Colliers International is a worldwide affiliation of independently owned and operated companies. FEBRUARY 2015