

ARENA HUB PLAZA

# MUNDY ST BETWEEN RT 309 & I-81

WILKES-BARRE, PA

LEASING OPPORTUNITY ±2,265 SF ENDCAP SPACE & ±5,721 SF FORMER PIER 1 ENDCAP

JOIN



NEW TENANTS



## property highlights.

- ±438,344 SF power center anchored by Lowe's and many others
- The best endcap in the market located at the entrance to the largest open air center in northeast Pennsylvania
- Located along the Mundy Street/ Highland Blvd. retail corridor, which has over 2,000,000 SF of retail
- Very rare lease opportunity in the #1 shopping center in northeastern PA

## stats.

2019 DEMOGRAPHICS*	5 MILES	10 MILES	20 MILES
EST. POPULATION	114,175	214,842	444,528
EST. HOUSEHOLDS	49,163	90,133	182,396
EST. AVG. HH INCOME	\$61,516	\$70,084	\$70,038

INTERSTATE 81 TRAFFIC COUNT: 62,000 VPD \*PENNDOT 2019  
MUNDY STREET TRAFFIC COUNT: 21,000 VPD



**METRO**<sup>®</sup>  
COMMERCIAL  
REAL ESTATE, INC.

MetroCommercial.com | PHILADELPHIA, PA | PLYMOUTH MEETING, PA | MOUNT LAUREL, NJ | NAPLES, FL

get in touch.

**MIKE MURRAY**

office 610.825.5222  
direct 610.260.2669

[mmurray@metrocommercial.com](mailto:mmurray@metrocommercial.com)



**WYOMING MALL**  
 GLA: 914,000 SF  
 SALES: \$396 PSF

**POLLOCK**  
 FIRE AND AUTO CENTER

**JCPenney**  
**macy's**

**ASHLEY**  
 FURNITURE HOMEACCENTRY.COM

**OfficeMax**

**Meat's**  
 southwest grill

**LONGHORN**  
 STEAKHOUSE

**AspenDental**

**SITE**

**LOWE'S**

**PET SMART**

**BEST BUY** **DICK'S**  
 SPORTING GOODS

**BARNES & NOBLE**

**OLD NAVY**

**TJ-maxx**

**STAPLES**

**TARGET** **ROSS**

**petco**

**Marshalls**

**BOB'S FURNITURE**  
 DISCOUNT

309

309 BUS

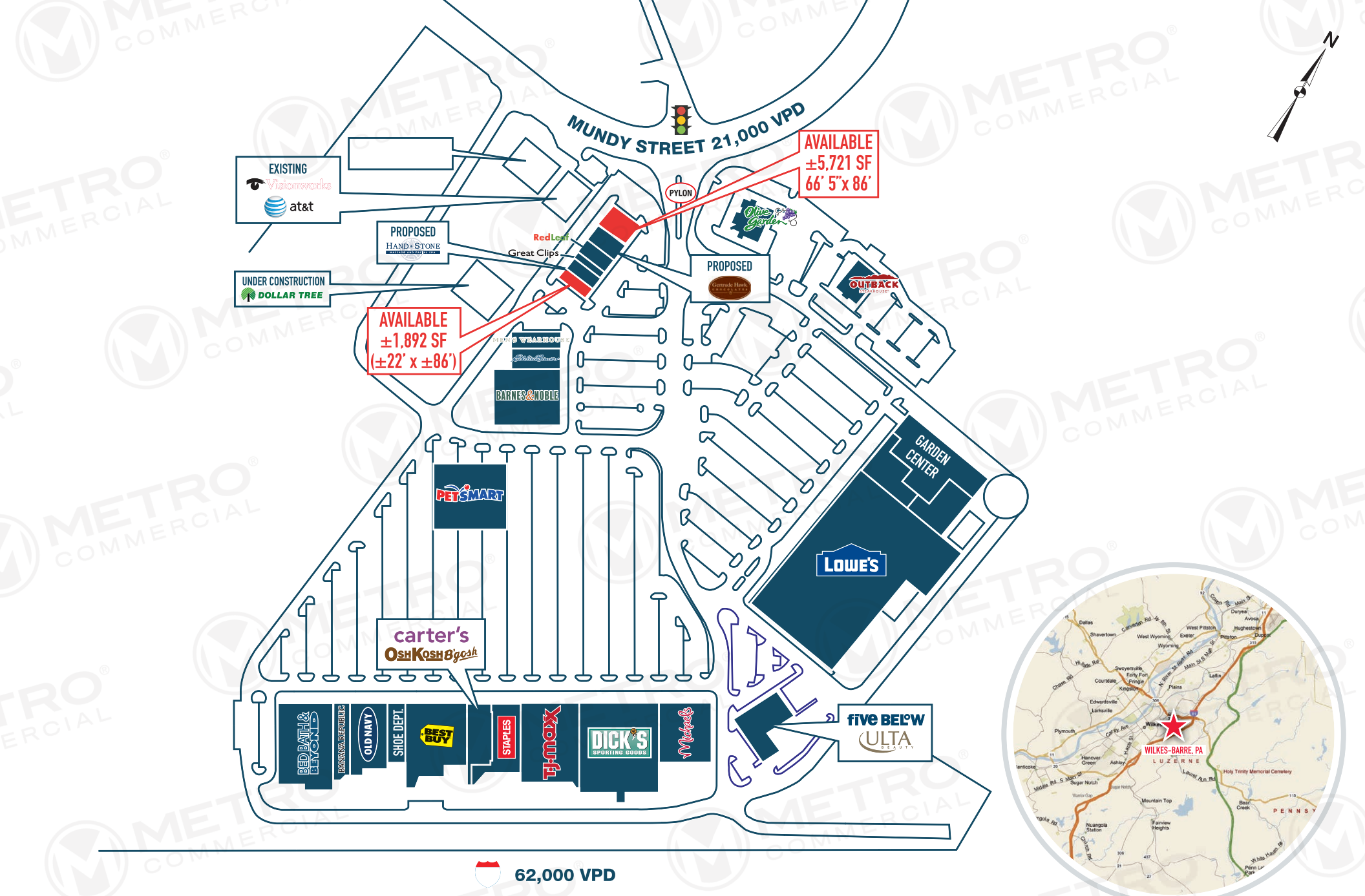
MUNDY STREET

HIGHLAND PARK BOULEVARD

81

**MUNDY ST BETWEEN RT 309 & I-81  
 WILKES-BARRE, PA**

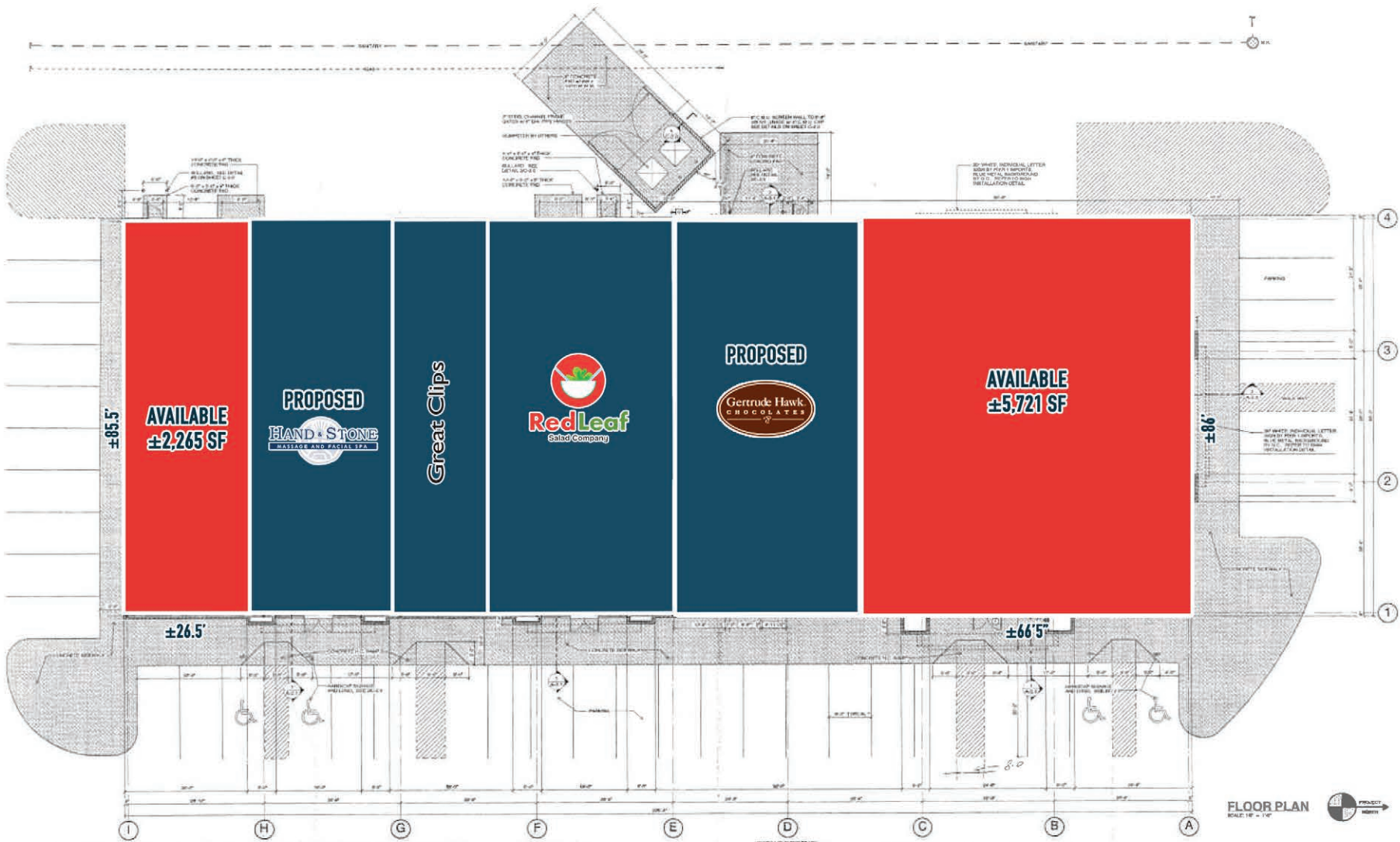
The information and images contained herein are from sources deemed reliable. However, Metro Commercial Real Estate, Inc. makes no representation whatsoever as to their accuracy or authenticity. Images shown may be modified for illustrative purposes. Images may be out-of-date and not current. 7.28.20



**MUNDY ST BETWEEN RT 309 & I-81  
WILKES-BARRE, PA**



The information and images contained herein are from sources deemed reliable. However, Metro Commercial Real Estate, Inc. makes no representation whatsoever as to their accuracy or authenticity. Images shown may be modified for illustrative purposes. Images may be out-of-date and not current. 7.28.20

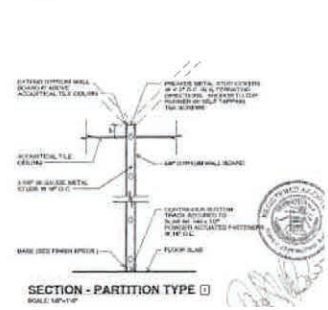
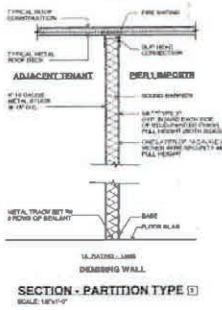
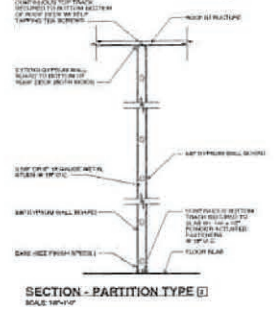
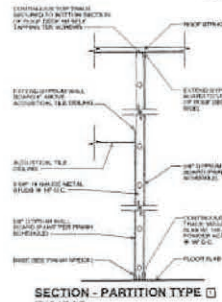


FLOOR PLAN  
SCALE 1/8" = 1'-0"

ADJACENT SPACE DOOR AND FINISH SCHEDULE						
DOOR NUMBER	DOOR TYPE	DOOR SIZE	THICKNESS	DOOR MATERIAL	TYPICAL MATERIAL	FINISHING
1A-1B	A	8'-0" x 7'-0"	1.50"	GLASS/ALUM	ALUM	PAINT DOOR
1C-1D	B	8'-0" x 7'-0"	1.50"	GLASS	GLASS	PAINT DOOR
1E-1F	C	8'-0" x 7'-0"	1.50"	GLASS	GLASS	PAINT DOOR

<p>PROVIDE SLIDING GLASS DOOR WITH ALUMINUM FRAME. GLASS TO BE CLEAR. PROVIDE 1/2" ALUMINUM TRACKS ON BOTH SIDES. PROVIDE 1/2" ALUMINUM TRACKS ON BOTH SIDES. PROVIDE 1/2" ALUMINUM TRACKS ON BOTH SIDES.</p>	<p>PROVIDE SLIDING GLASS DOOR WITH GLASS FRAME. GLASS TO BE CLEAR. PROVIDE 1/2" GLASS TRACKS ON BOTH SIDES. PROVIDE 1/2" GLASS TRACKS ON BOTH SIDES. PROVIDE 1/2" GLASS TRACKS ON BOTH SIDES.</p>	<p>PROVIDE SLIDING GLASS DOOR WITH GLASS FRAME AND PANEL. GLASS TO BE CLEAR. PROVIDE 1/2" GLASS TRACKS ON BOTH SIDES. PROVIDE 1/2" GLASS TRACKS ON BOTH SIDES. PROVIDE 1/2" GLASS TRACKS ON BOTH SIDES.</p>
---	---	---



The information and images contained herein are from sources deemed reliable. However, Metro Commercial Real Estate, Inc. makes no representation whatsoever as to their accuracy or authenticity. Images shown may be modified for illustrative purposes. Images may be out-of-date and not current. 7.28.20

MUNDY ST BETWEEN RT 309 & I-81  
WILKES-BARRE, PA



VIEW FROM CENTER MAIN ENTRANCE  
OFF MUNDY STREET



AVAILABLE  
±5,721 SF  
(66'5" x 86')



MUNDY ST BETWEEN RT 309 & I-81  
WILKES-BARRE, PA



The information and images contained herein are from sources deemed reliable. However, Metro Commercial Real Estate, Inc. makes no representation whatsoever as to their accuracy or authenticity. Images shown may be modified for illustrative purposes. Images may be out-of-date and not current. 7.28.20

AVAILABLE SPACE

±2,265 SF

85.5' AT DEPTH

26.5' AT FRONTAGE

YOUR LOGO/SIGN

YOUR LOGO/SIGN

PROPOSED

HAND · STONE  
MAINTENANCE AND REPAIR, LLC

Great

MUNDY ST BETWEEN RT 309 & I-81  
WILKES-BARRE, PA



The information and images contained herein are from sources deemed reliable. However, Metro Commercial Real Estate, Inc. makes no representation whatsoever as to their accuracy or authenticity. Images shown may be modified for illustrative purposes. Images may be out-of-date and not current. 7.28.20



The information and images contained herein are from sources deemed reliable. However, Metro Commercial Real Estate, Inc. makes no representation whatsoever as to their accuracy or authenticity. Images shown may be modified for illustrative purposes. Images may be out-of-date and not current. 7.28.20

**MUNDY ST BETWEEN RT 309 & I-81  
WILKES-BARRE, PA**





The information and images contained herein are from sources deemed reliable. However, Metro Commercial Real Estate, Inc. makes no representation whatsoever as to their accuracy or authenticity. Images shown may be modified for illustrative purposes. Images may be out-of-date and not current. 7.28.20

**MUNDY ST BETWEEN RT 309 & I-81  
WILKES-BARRE, PA**







The information and images contained herein are from sources deemed reliable. However, Metro Commercial Real Estate, Inc. makes no representation whatsoever as to their accuracy or authenticity. Images shown may be modified for illustrative purposes. Images may be out-of-date and not current. 7.28.20

**MUNDY ST BETWEEN RT 309 & I-81  
WILKES-BARRE, PA**





The information and images contained herein are from sources deemed reliable. However, Metro Commercial Real Estate, Inc. makes no representation whatsoever as to their accuracy or authenticity. Images shown may be modified for illustrative purposes. Images may be out-of-date and not current. 7.28.20

**MUNDY ST BETWEEN RT 309 & I-81  
WILKES-BARRE, PA**

