



## Office/Retail and Land Site

- Located in retail district with new businesses/real estate investment
- Includes vacant land to the west of the property - for additional parking building expansion or separately building side for sale/lease
- Large paved parking lot surrounding the building
- Multiple tenancy options
- Multiple entries to the building
- Development Opportunity

## For more information:

Michael R. Block, CPM  
816.932.5549  
mblock@blockllc.com

Keiten J. Nuspl  
816.932.5531  
knuspl@blockllc.com

Andrew T. Fain  
816.412.5549  
afain@blockllc.com

The information contained in this marketing flyer is presented as general information only. Block Real Estate Services, LLC makes no representation as to its accuracy. This information is not intended as legal, financial or real estate advice and must not be relied upon as such. You should make your own inquiries, obtain independent inspections, and seek professional advice tailored to your specific circumstances before making any legal, financial or real estate decisions.

### Building Specifications

Building Size:	12,072 ± SF building on two levels - both at grade
Land Size:	2.19 Acres
Year Built:	1975
Parking:	60 off-street (9.94/1,000 with room for expansion on main floor)
2018 Real Estate Taxes:	\$16,311.56
Parcel ID:	000231
Zoning:	C-1 limited business district

### For more information:

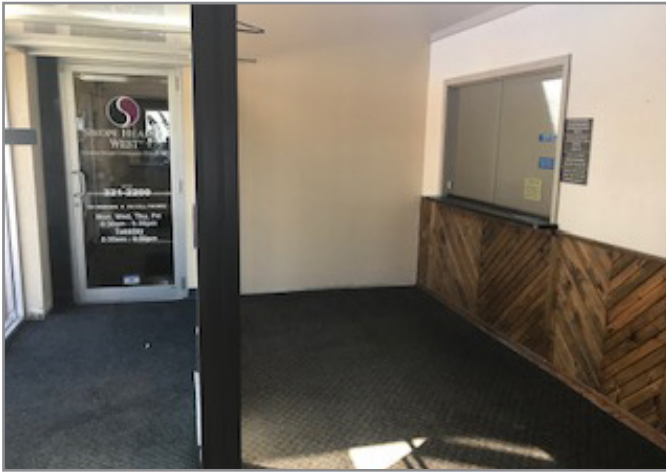
Michael R. Block, CPM  
816.932.5549  
mblock@blockllc.com

Keiten J. Nuspl  
816.932.5531  
knuspl@blockllc.com

Andrew T. Fain  
816.412.5549  
afain@blockllc.com



Interior Photos

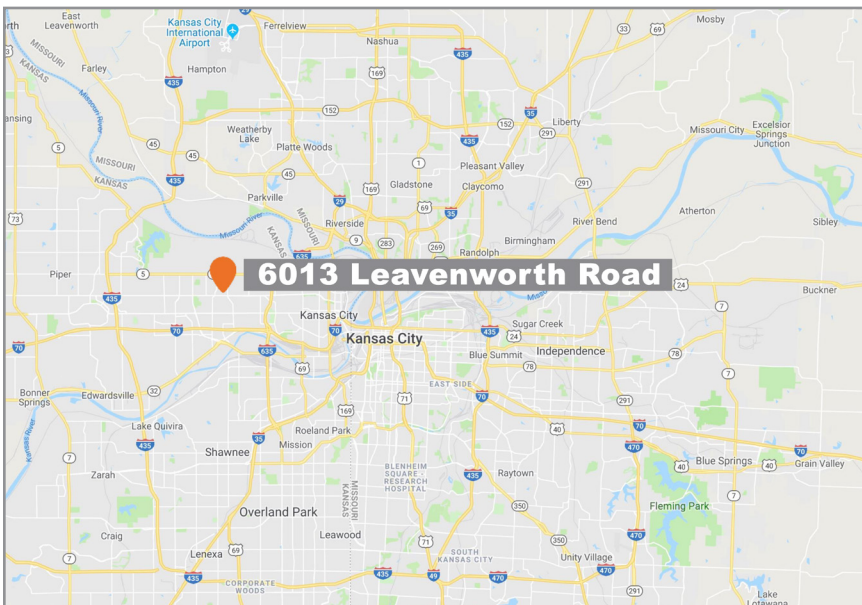
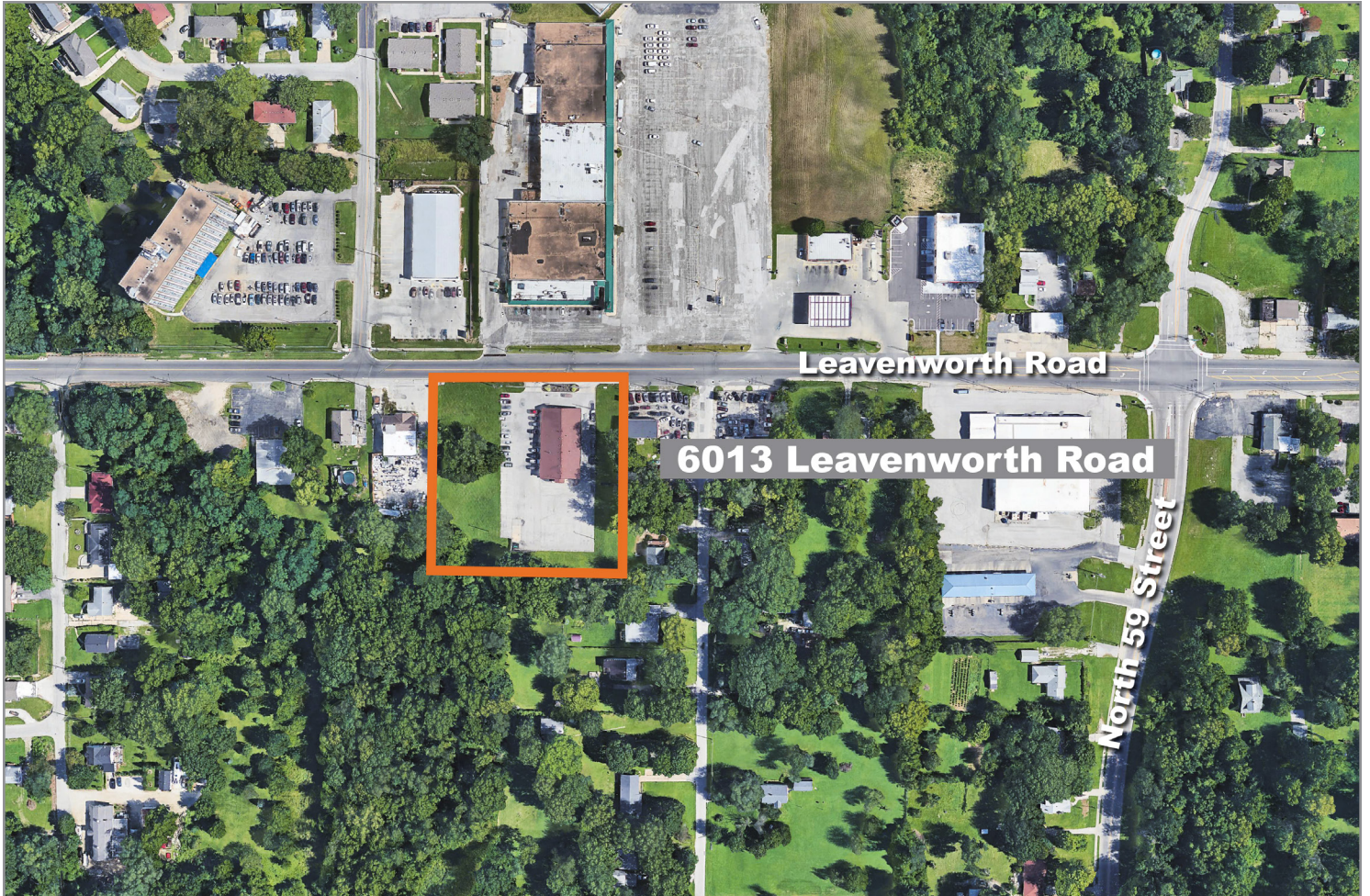




# 6013 Leavenworth Road

Kansas City, Kansas, 66104

# For Sale/Lease



For more information:

Michael R. Block, CPM  
816.932.5549  
mblock@blockllc.com

Keiten J. Nuspl  
816.932.5531  
knuspl@blockllc.com

Andrew T. Fain  
816.412.5549  
afain@blockllc.com

700 W. 47th Street, Suite 200  
Kansas City, MO 64112  
816.756.1400 | [www.BLOCKLLC.com](http://www.BLOCKLLC.com)

**BLOCK**  
REAL ESTATE SERVICES, LLC