

AVAILABLE FOR LEASE:

SUNHALA BUSINESS PARK

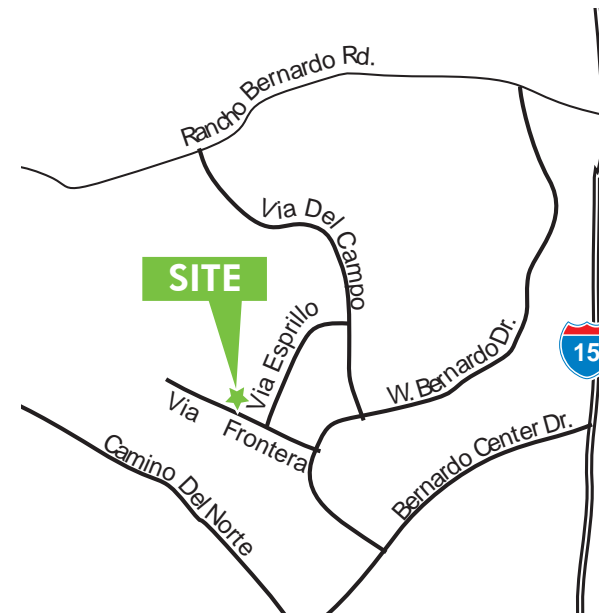
10954-10966 VIA FRONTERA | 16450 - 16464 VIA ESPRILLO
SAN DIEGO, CALIFORNIA 92127

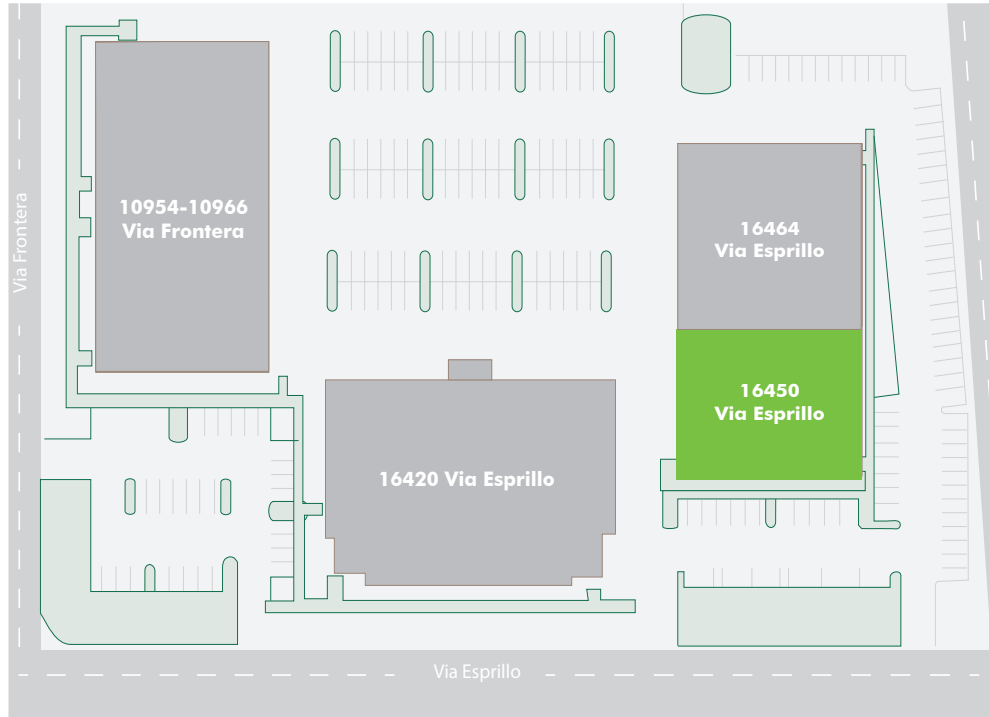


CBRE

PROJECT FEATURES

-  + Approximately 74,572 SF Business Park
-  + Flex/ R&D / Warehouse spaces
-  + 3.3/1,000 parking ratio (potentially expandable)
-  + Flexibility for a variety of uses
-  + Single story buildings
-  + Fiber optic services potentially available by AT&T
-  + Some suites are fire sprinklered
-  + Street frontage on Via Frontera & Via Esprillo
-  + Strong, private, local ownership
-  + Zoning IP-2-1





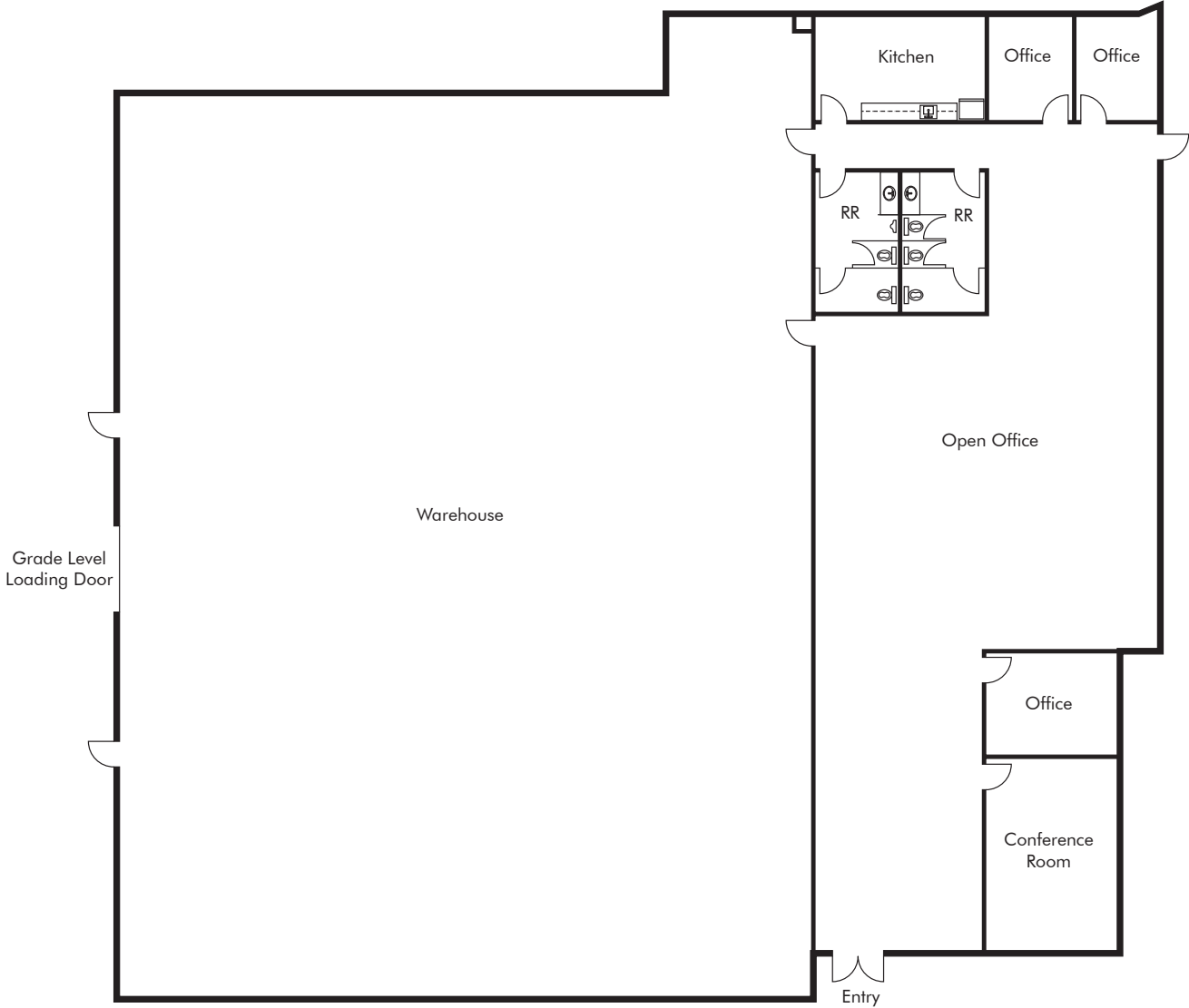
Availability

ADDRESS	SF	RATE	COMMENTS
16450 Via Esprillo	±13,888 SF	\$1.35/SF/Mo. Net of Expenses (NNNs ±\$0.40/SF)	Spec space coming soon. Approximately 20% office/ 80% warehouse with (3) private offices, open office area, kitchen, conference room, (2) restrooms, and (1) grade level loading door.

Floor Plan

16450 Via Esprillo
± 13,888 SF

**Spec Space
Coming Soon**





SUNHALA BUSINESS PARK

16450 - 16464 VIA ESPRILLO SAN DIEGO, CALIFORNIA 92127

BILL DOLAN

Senior Vice President
Lic. 01188240
+1 858 546 4678
bill.dolan@cbre.com

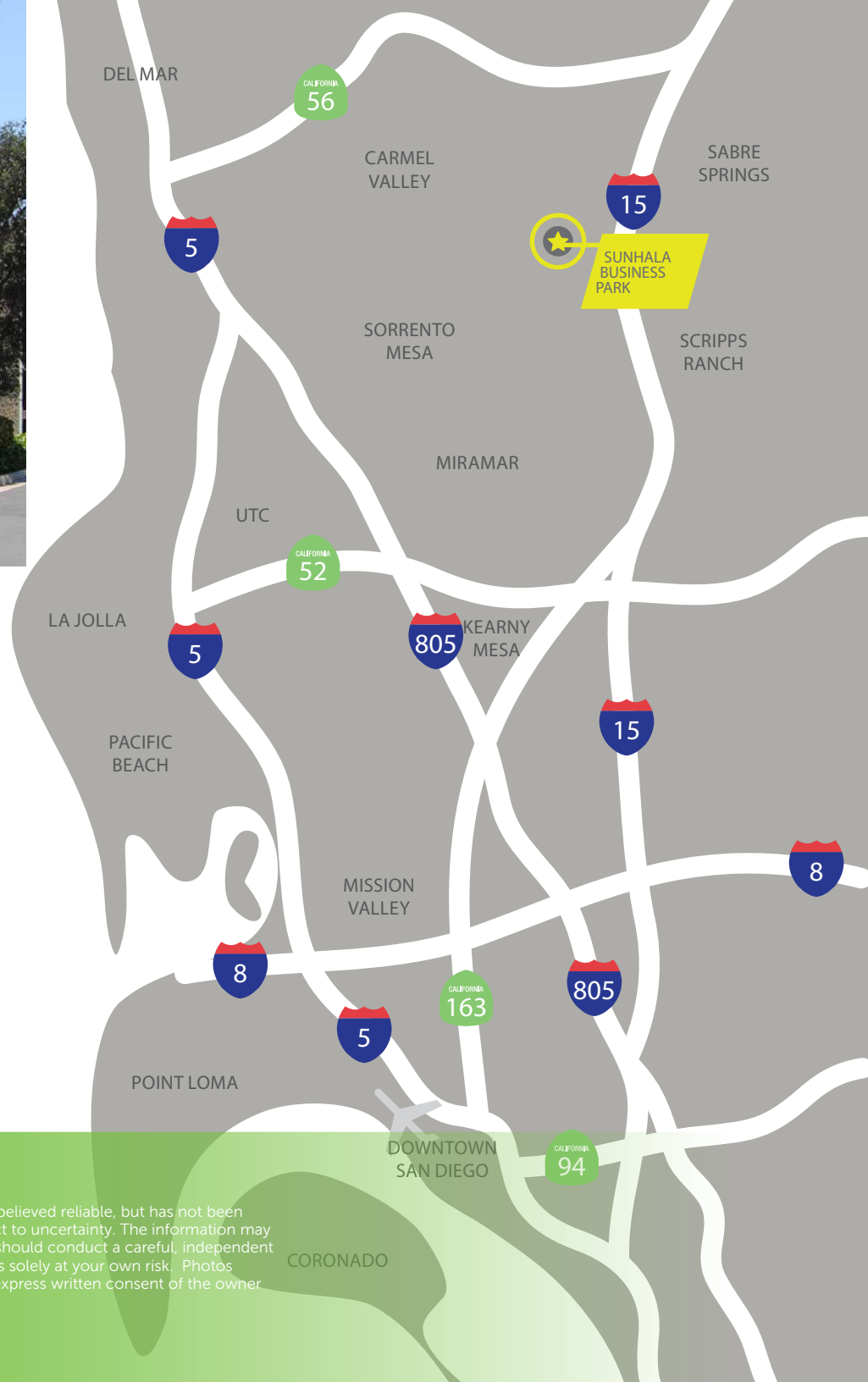
RYAN SPARKS, SIOR

First Vice President
Lic. 01784736
+1 858 546 2606
ryan.sparks@cbre.com

CBRE

CBRE, INC.
Broker Lic. 00409987

CBRE, Inc.
4301 La Jolla Village Drive, Suite 3000
San Diego, CA 92122
www.cbre.com/sandiego



© 2019 CBRE, Inc. All rights reserved. This information has been obtained from sources believed reliable, but has not been verified for accuracy or completeness. Any projections, opinions, or estimates are subject to uncertainty. The information may not represent the current or future performance of the property. You and your advisors should conduct a careful, independent investigation of the property and verify all information. Any reliance on this information is solely at your own risk. Photos herein are the property of their respective owners and use of these images without the express written consent of the owner is prohibited.