



*Riverside
Office Plaza II*



*Unique Tempe modern
tech space available for lease*

1215 & 1255 West Rio Salado Parkway · Tempe · Arizona

Mark F. Gustin, SIOR, CCIM
Managing Director
+1 602 282 6316
mark.gustin@am.jll.com

Dave Seeger
Managing Director
+1 602 282 6317
dave.seeger@am.jll.com



Jones Lang LaSalle Americas, Inc. License #: CO508577000



Available for lease

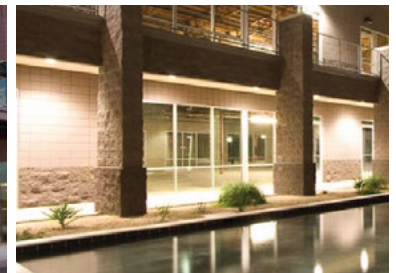
PREMIER LOCATION

- › Neighbors the acclaimed Tempe Center for the Arts
- › Convenient access to Loops 202 & 101
- › 1.4 miles from Phoenix Sky Harbor International Airport
- › Overlooks the scenic Rio Salado area and Tempe Town Lake
- › Several hotels nearby including The Buttes, Mission Palms, Fiesta Inn and Aloft Tempe

HIGHLIGHTS

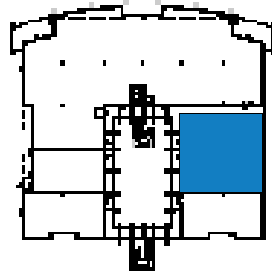
- › Near Valley Metro Light Rail
- › Modern Tech Space
- › Near Mill Avenue District, Downtown Tempe and ASU, and Tempe Marketplace
- › Fiber provided by Cox Communications

1215 & 1255 West Rio Salado Parkway · Tempe · Arizona



1255 WEST RIO SALADO PARKWAY

floor plan

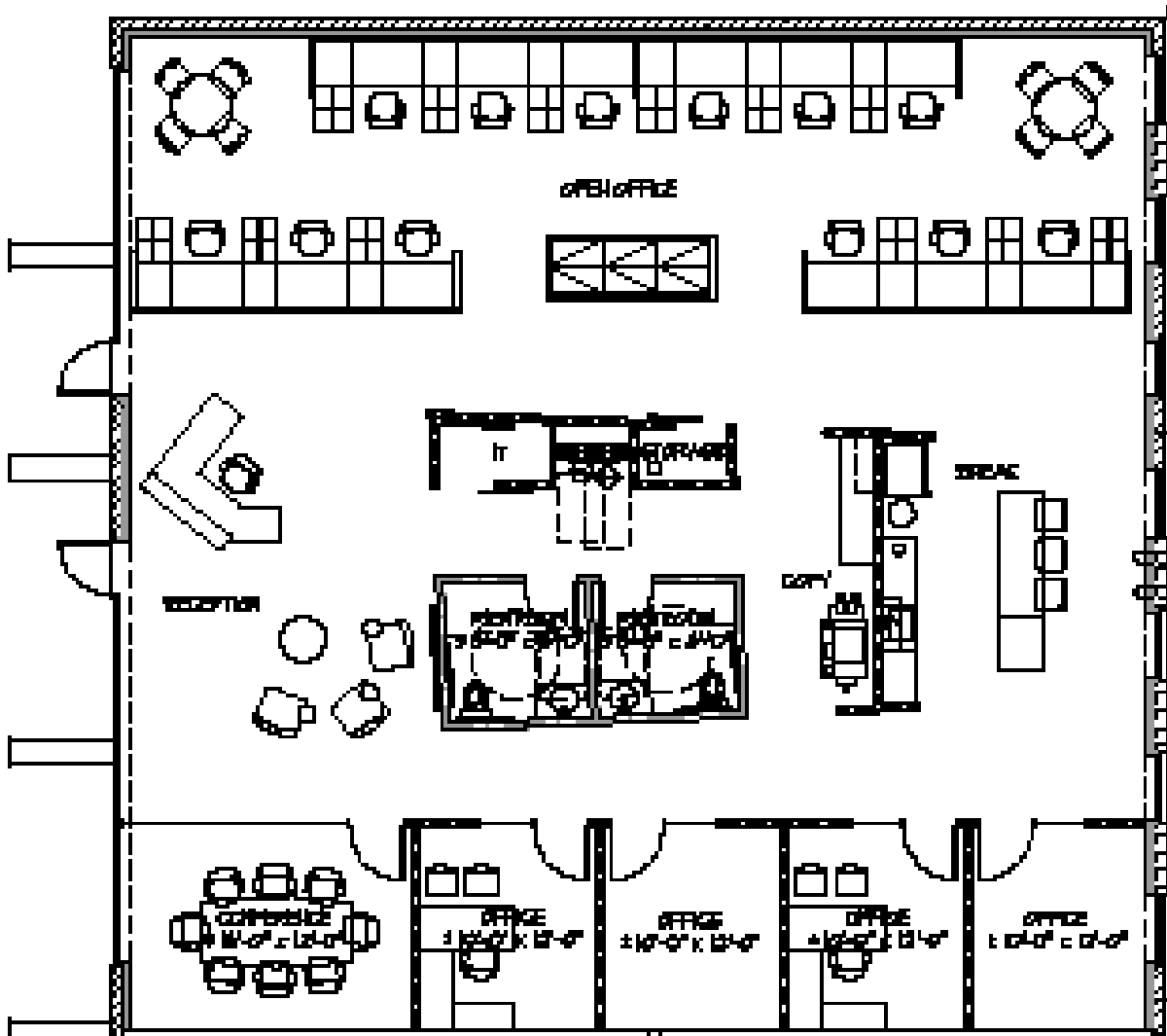


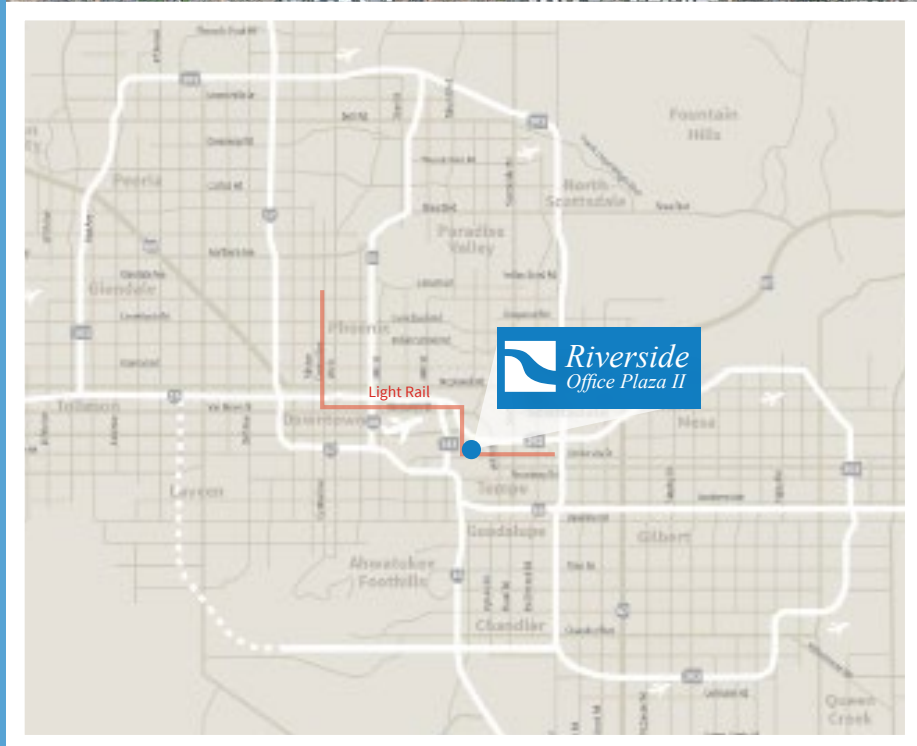
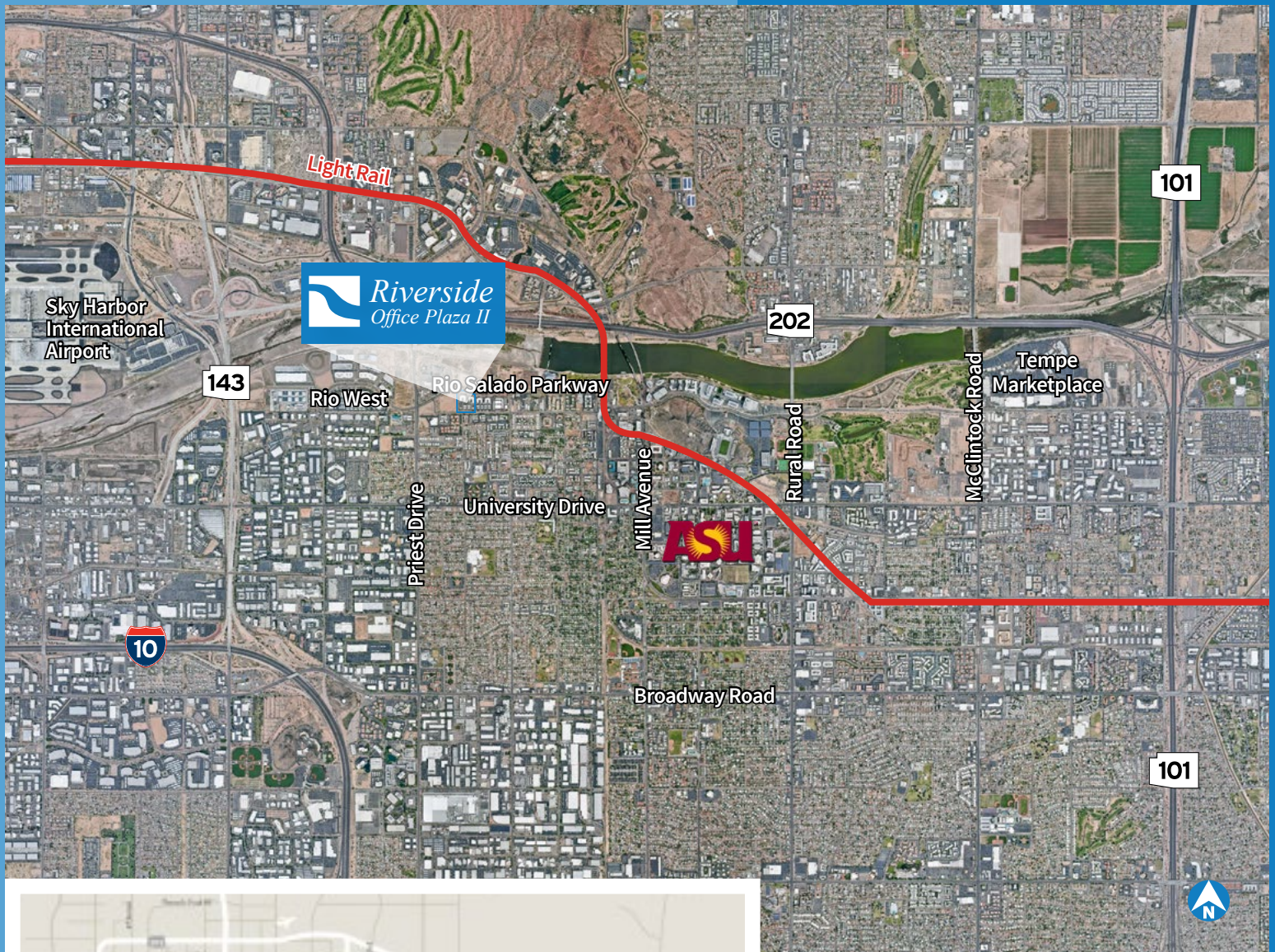
FEATURES

- › Suite 111 Available Immediately
- › ±3,703 s.f.
- › \$24.00 p.s.f., NNN lease rate
- › 4/1,000 parking



Having trouble viewing the tour? Copy and paste link into browser:
<https://my.matterport.com/show/?m=dKl6d5wNqFg>





Riverside Office Plaza II

For additional information:

Mark Gustin, SIOR, CCIM
 Managing Director
 +1 602 282 6316
mark.gustin@am.jll.com

Dave Seeger
 Managing Director
 +1 602 282 6317
dave.seeger@am.jll.com



Although information has been obtained from sources deemed reliable, neither Owner nor JLL makes any guarantees, warranties or representations, express or implied, as to the completeness or accuracy as to the information contained herein. Any projections, opinions, assumptions or estimates used are for example only. There may be differences between projected and actual results, and those differences may be material. The Property may be withdrawn without notice. Neither Owner nor JLL accepts any liability for any loss or damage suffered by any party resulting from reliance on this information. If the recipient of this information has signed a confidentiality agreement regarding this matter, this information is subject to the terms of that agreement. ©2019 Jones Lang LaSalle IP, Inc. All rights reserved.