

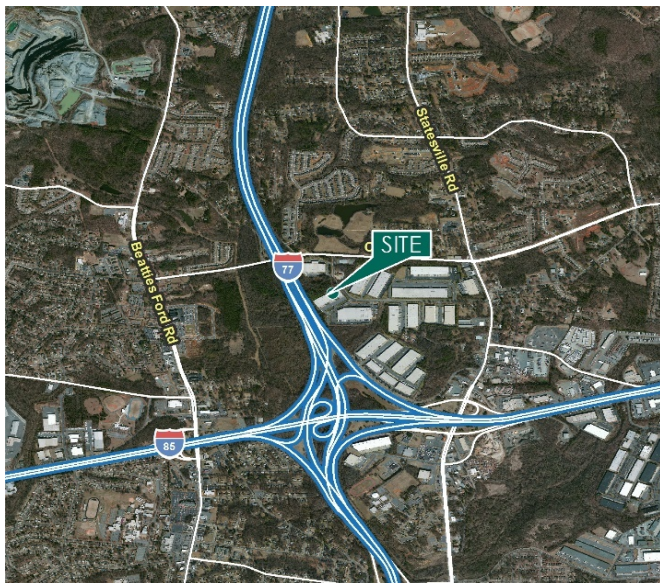
# 16,000 - 84,000 SF

## Industrial Space For Lease



## Prologis Crosspoint Center Park

2700 Hutchison McDonald Road  
Charlotte, NC 28269 USA



### LOCATION

- Immediate access to Interstate I-77 and I-85
- Minutes from Charlotte Douglas International Airport
- Strategic distribution location in North Submarket
- Close proximity to Charlotte Central Business District

### FACILITY

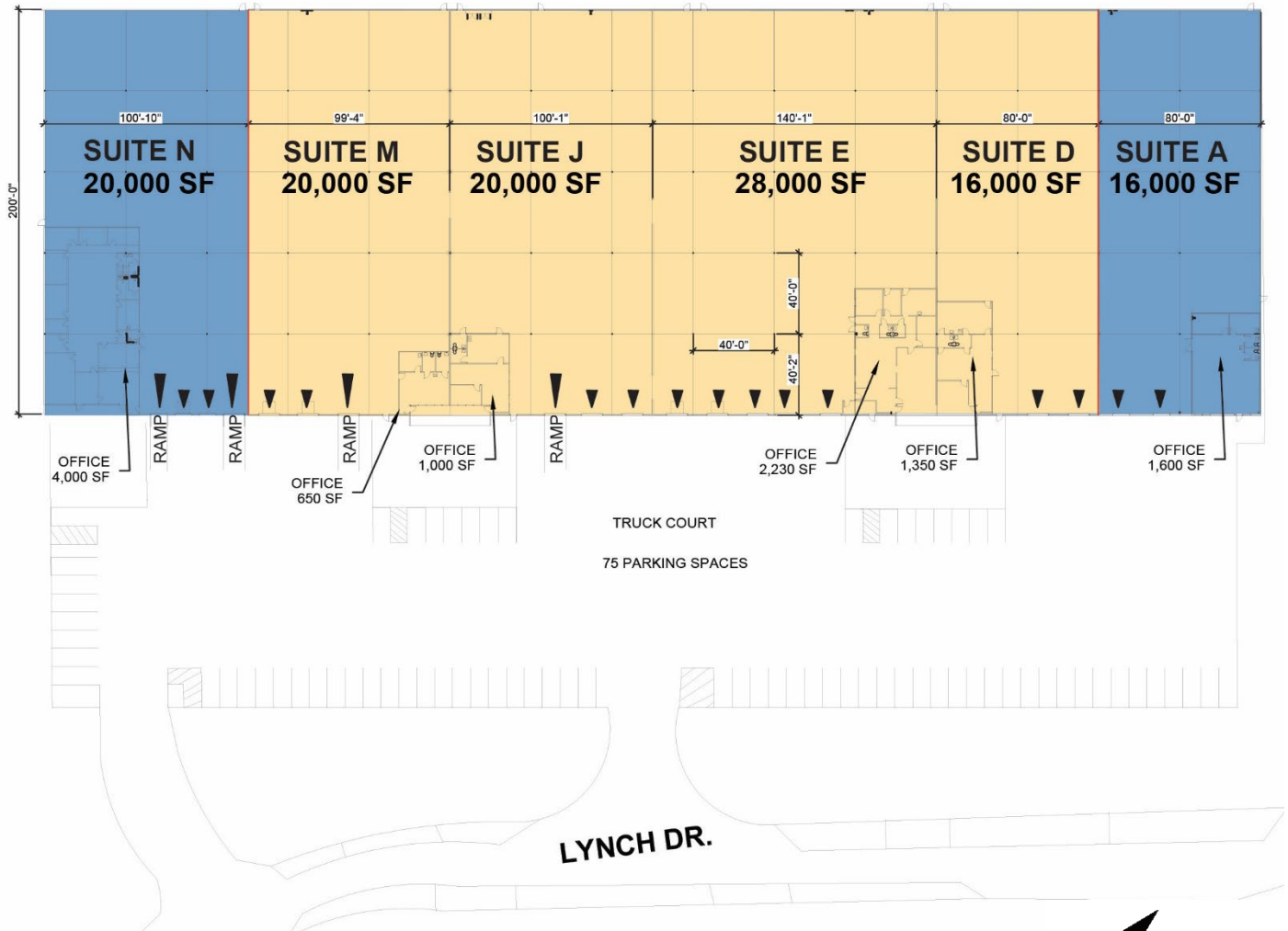
- 100,000 total SF
- 16,000 - 84,000 available SF
- 5,230 office SF
- 20' clear height
- 11 dock doors
- 2 drive in doors
- 200' building depth
- 40' x 40' column spacing
- ESFR sprinkler system
- Front load building
- 6" reinforced concrete slab
- Ample parking

### ADVANTAGES AND AMENITIES

- Professionally landscaped, controlled park environment
- Direct interstate access to I-85 and I-77
- First class park setting
- Prologis Clear Lease – a simplified lease that fixes operating and capital expenses for the entire lease term

# 16,000 - 84,000 SF

Industrial Space For Lease



Check out a virtual tour at: <https://my.matterport.com/show/?m=PRiafoj3dBv>



**JLL**  
Matthew Greer, SIOR,CCIM  
Matthew.greer@am.jll.com  
ph +1 704 804 5762  
cell +1 704 277 5675  
4201 Congress Street  
Suite 300  
Charlotte, NC 28209 USA

**JLL**  
Jordan Quinn  
Jordan.quinn@am.jll.com  
ph +1 704 804 5836  
cell +1 973 725 3071  
4201 Congress Street  
Suite 300  
Charlotte, NC 28209 USA

**JLL**  
Britten Mathews  
Britten.mathews@am.jll.com  
m  
ph +1 980 819 3857  
cell +1 804 363 3839  
4201 Congress Street  
Suite 300  
Charlotte, NC 28209 USA

**Prologis**  
Peggy White  
pwhite@prologis.com  
ph +1 980 422 0886  
cell +1 704 649 6436  
2217 - C Distribution Center Drive  
Charlotte, NC 28269 USA



- LEASED
- AVAILABLE
- DOCK DOOR
- DRIVE-IN DOOR