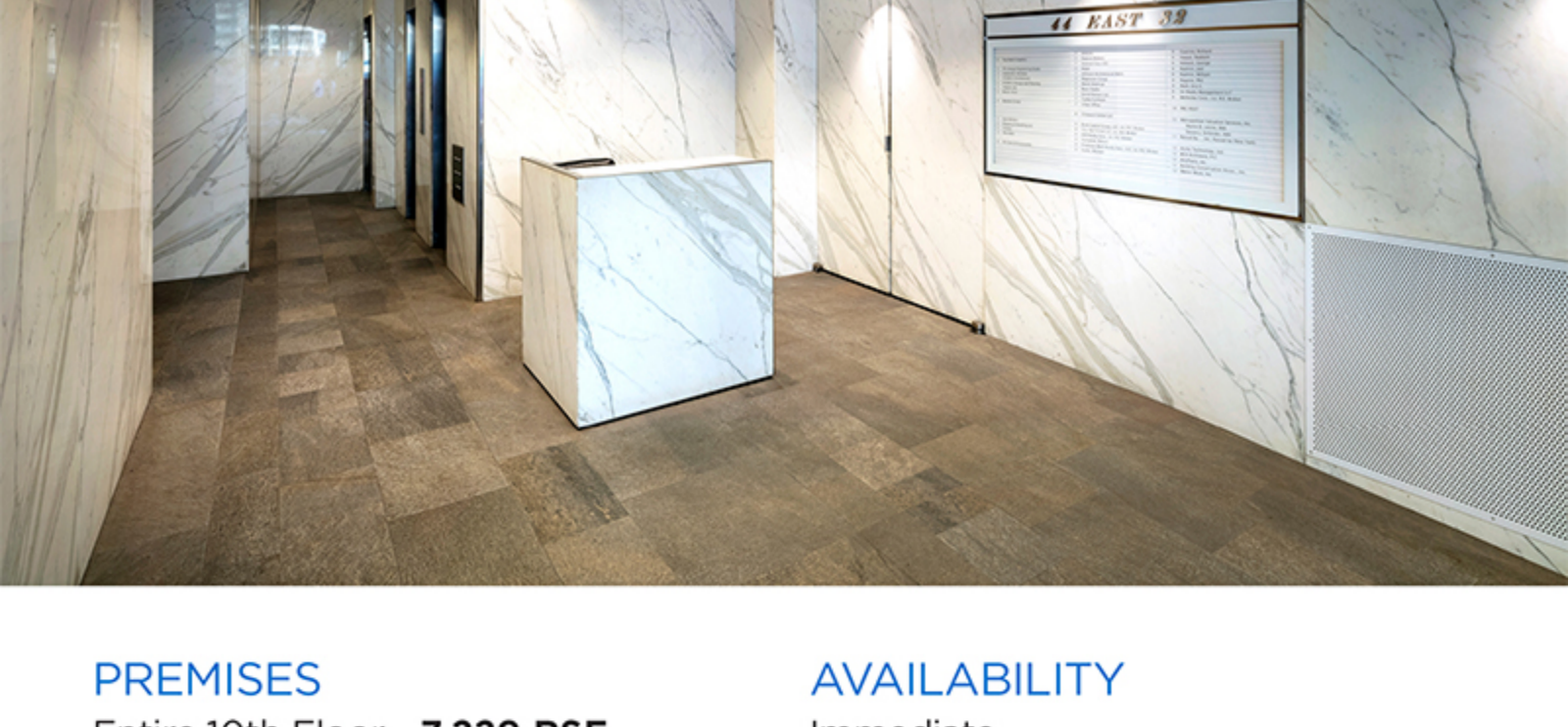




44 EAST 32 ST

PRE-BUILT

NEWMARK



PREMISES

Entire 10th Floor - **7,229 RSF**

AVAILABILITY

Immediate

ASKING RENT

Upon Request

TERM

5-10 years

COMMENTS

- Ground-floor tenant: The Cutting Room
- Newly renovated lobby and elevators
- Close proximity to subway and bus lines
- Great for TAMI-type companies
- Long-term, stable ownership
- Pre-Built

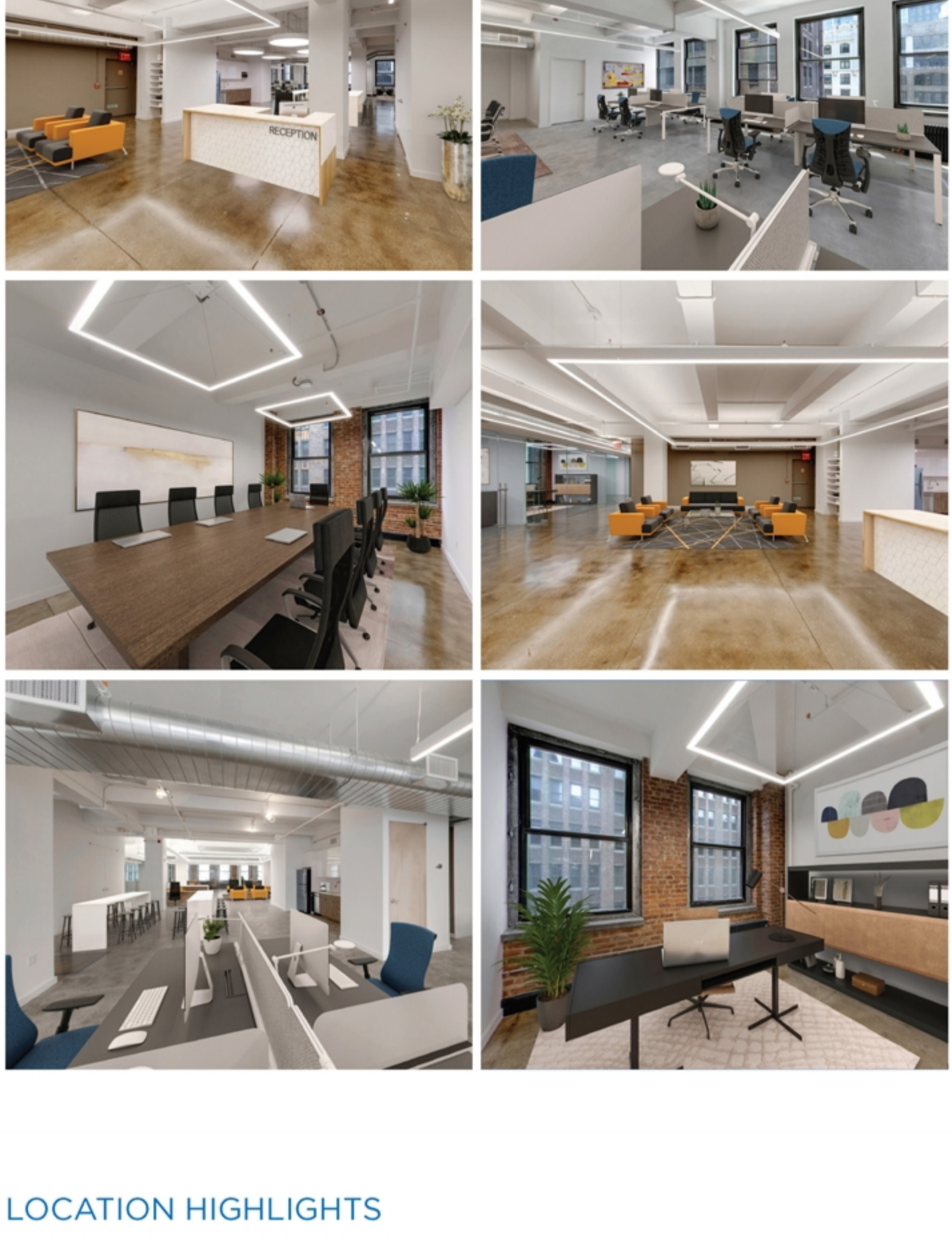
PAUL DAVIDSON
212-372-2051
paul.davidson@nrmk.com

ROY LAPIDUS
212-372-2170
rlapidus@gfpre.com

NEWMARK

VIRTUALLY STAGED TOUR

CLICK TO VIEW



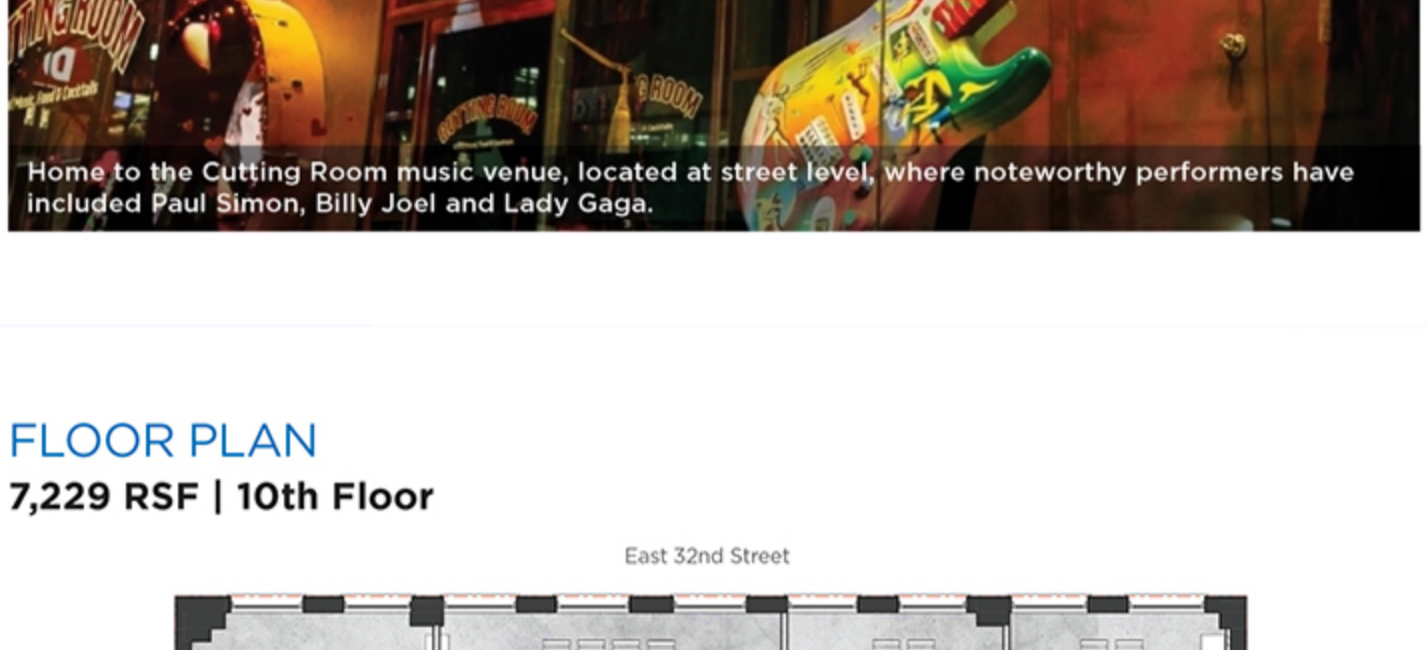
LOCATION HIGHLIGHTS



Located in the much desirable Transit Triangle with Penn Station, Grand Central Station and The Port Authority all within a 10 minute walk.



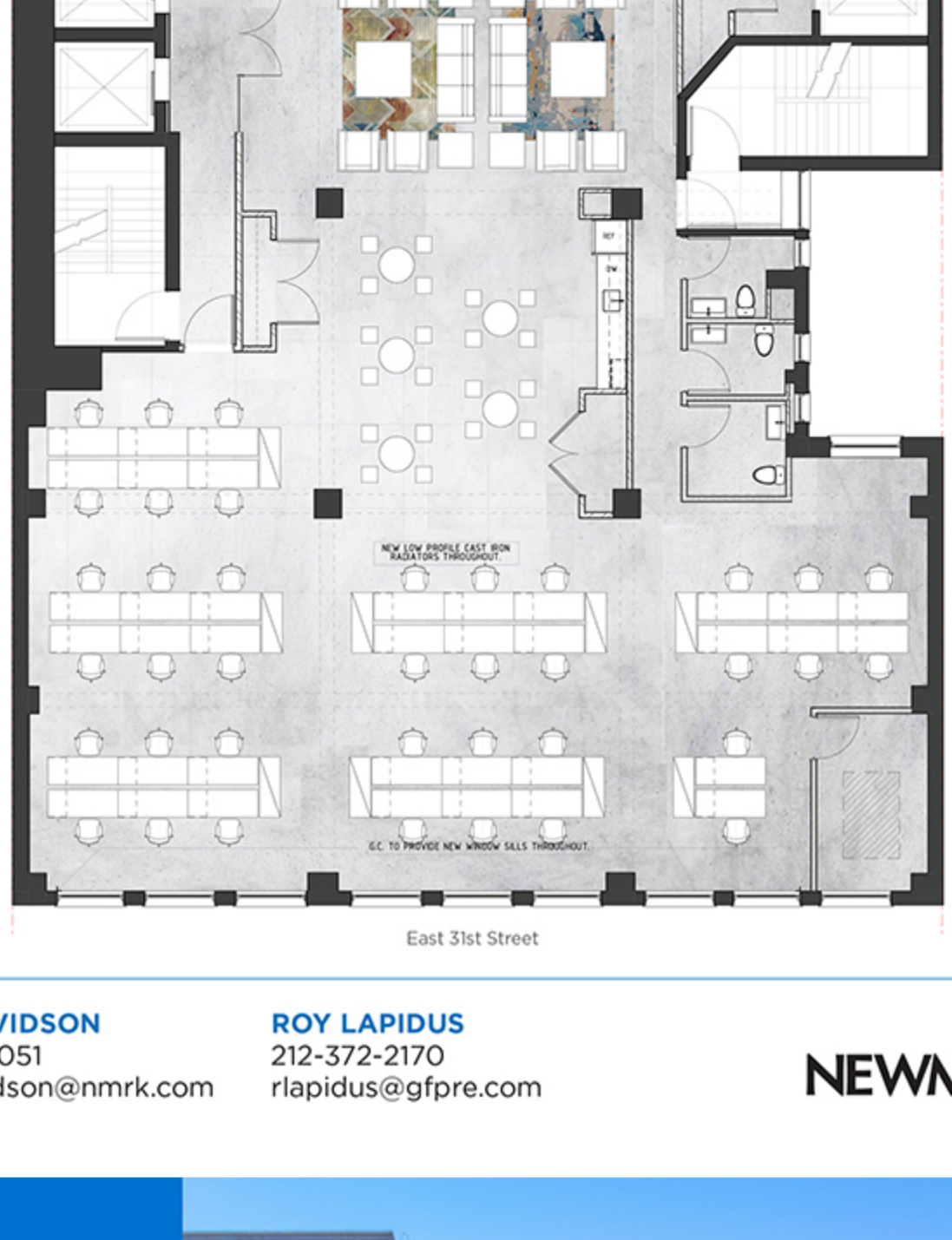
Go across the street to Exhale Spa. Around the corner sits world-renowned Wolfgang's Steakhouse. For the best coffee there's Gregory's.



Home to the Cutting Room music venue, located at street level, where noteworthy performers have included Paul Simon, Billy Joel, and Lady Gaga.

FLOOR PLAN

7,229 RSF | 10th Floor



PAUL DAVIDSON
212-372-2051
paul.davidson@nrmk.com

ROY LAPIDUS
212-372-2170
rlapidus@gfpre.com

NEWMARK

44 EAST 32 ST

PAUL DAVIDSON
212-372-2051
paul.davidson@nrmk.com

ROY LAPIDUS
212-372-2170
rlapidus@gfpre.com

NEWMARK



DOWNLOAD BROCHURE

125 Park Avenue, New York, NY 10017 | 212-372-2051

The information contained herein has been obtained from sources deemed reliable but has not been verified and no guarantee, warranty or representation, either express or implied, is made with respect to such information. Terms of sale or lease and availability are subject to change or withdrawal without notice.

©2022 Newmark. All Rights Reserved.