

# Avenues South

11035 Philips Highway, Jacksonville, FL 32256



## 2015 Demographics:

Drive Time:	1 Miles	3 Miles	5 Miles
Total Population:	2,021	35,548	117,559
Avg. Household Income	\$124,346	\$91,137	\$83,654
Number of Households:	816	13,884	48,973

**Traffic Count (2015): 33,000**



## HAKIMIAN HOLDINGS

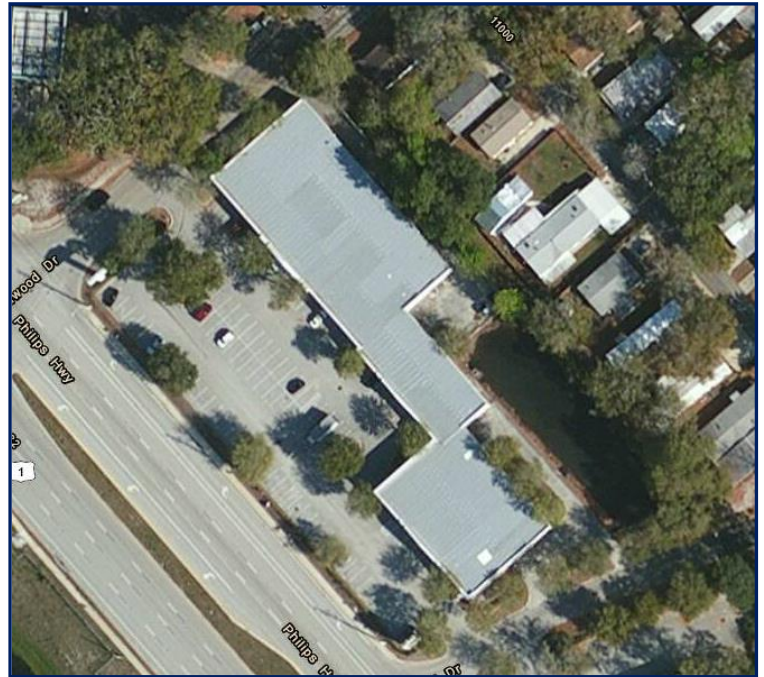
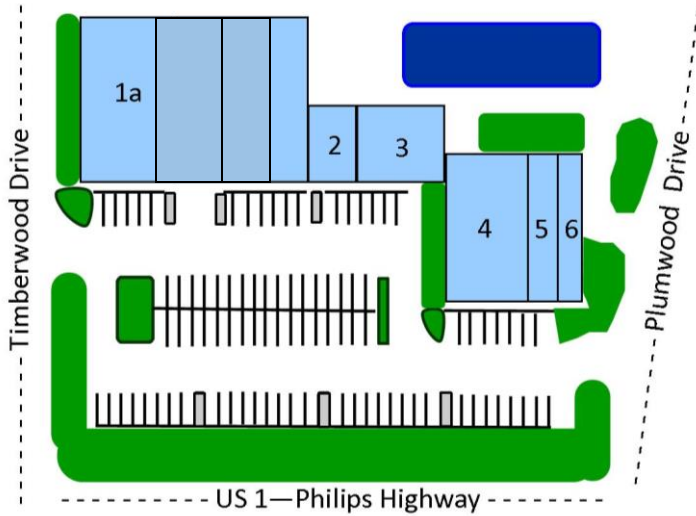
7077 Bonneval Road Ste 400 · Jacksonville, FL 32216

904.757.4000 · www.hakimian.us



# Avenues South

11035 Philips Highway, Jacksonville, FL 32256



	SITE SUMMARY	sq. ft.
1a	Plato's Closet	5,500
1b	La Nopalera	4,470
1c	Available	2,700
1h	Fit Body Boot Camp	2,492
2	Hertz	1,200
3	River City Lighting	2,600
4	Mattress Firm	4,853
5	Reach Destiny Arts	1,554
6	State Farm	1,125

## ABOUT US

**Hakimian Holdings** is an expanding real estate investment firm based in Jacksonville, Florida which seeks to optimize its market position by offering quality properties with strong demographics. We operate with a philosophy that local ownership and management offer superior service to our clients. Our property portfolio consists of well positioned centers in attractive markets. If we do not have a property in a particular, thriving area at this time, we will have one there soon.

### Janet Keister

Senior VP Leasing

904.757.4000 ex.t 216

[jkeister@hakimian.us](mailto:jkeister@hakimian.us)

### Lenny Cannarozzo

Leasing Representative

904.757.4000 ext. 220

[lenny@hakimian.us](mailto:lenny@hakimian.us)

## HAKIMIAN HOLDINGS

7077 Bonneval Road Ste 400 · Jacksonville, FL 32216

904.757.4000 · [www.hakimian.us](http://www.hakimian.us)