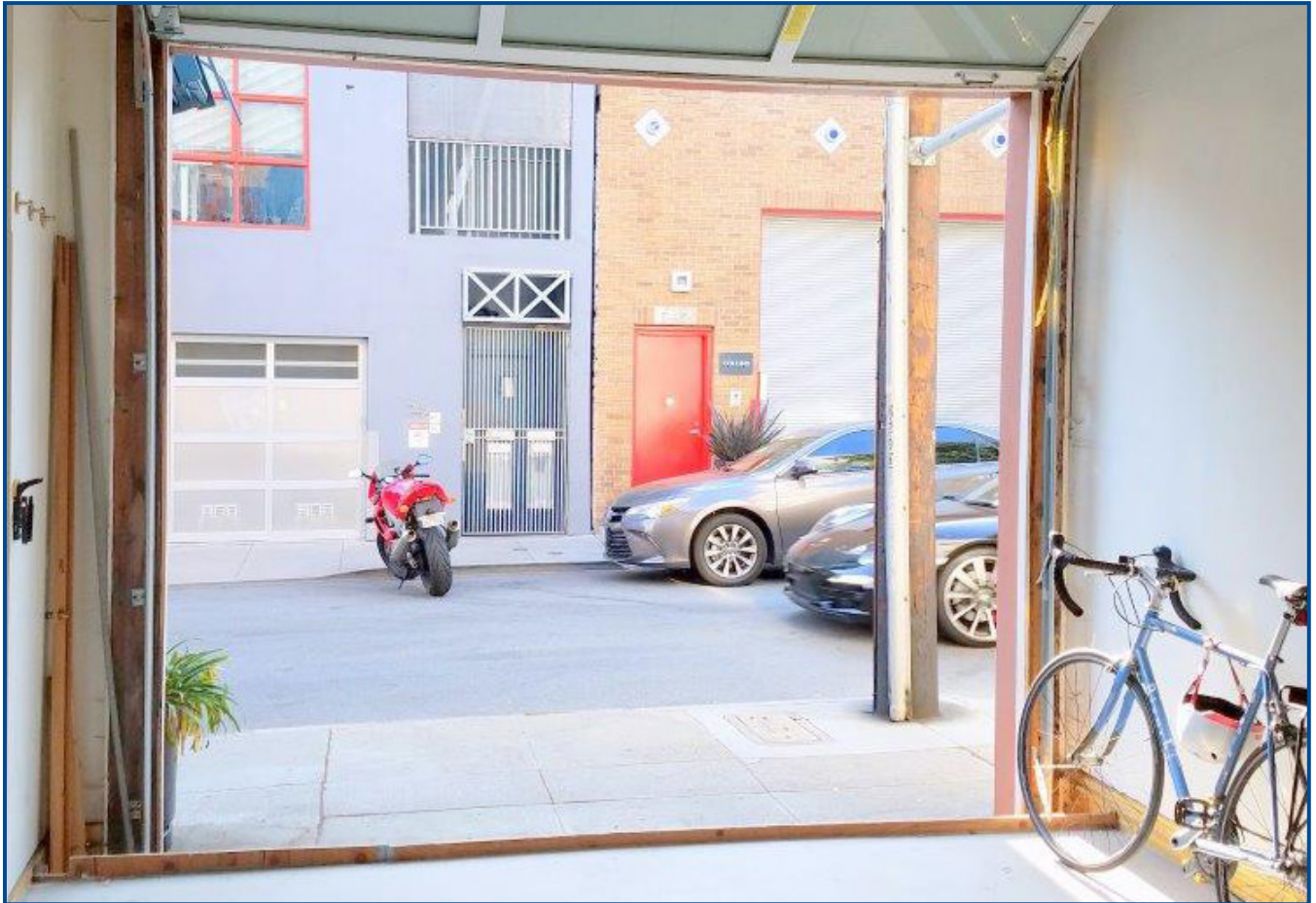


For Lease

750 CLEMENTINA STREET SOMA Sub-Market

Value/R&D Space



Presented By:

Mark D. Walker

(415) 834-1600 ext. 204
mwalker@coltoncommercialsf.com
License #: 00878051

R. Ian Osborne

(415)834-1600 ext. 209
iosborne@coltoncommercialsf.com
License #01936294



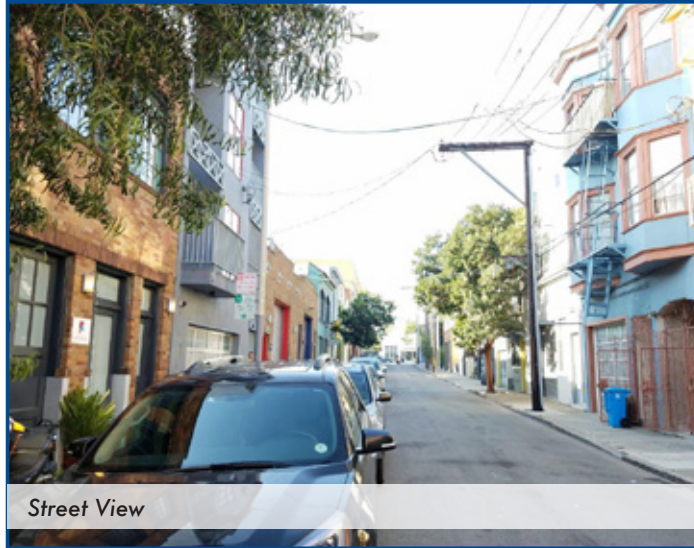
Open Area with Skylight



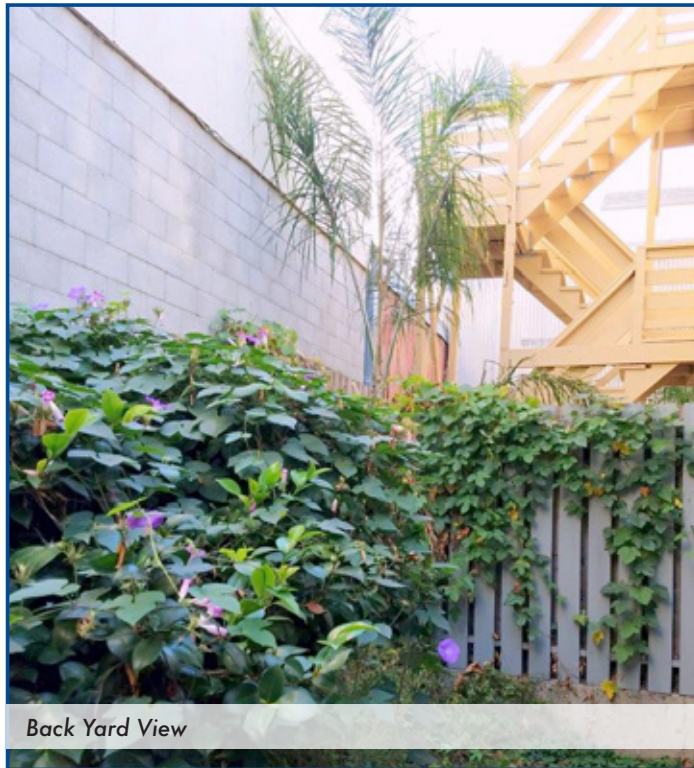
530 Bush Street, Suite 800, San Francisco, CA 94108
P: 415.834.1600 • F: 415.834.1601 • www.coltoncommercialsf.com

For Lease

750 CLEMENTINA STREET SOMA Sub-Market



Street View



Back Yard View

For Lease

750 CLEMENTINA STREET SOMA Sub-Market



SUITE	SQUARE FEET	DATE AVAILABLE	RATE per SF/Year *	TERM	COMMENTS
Ground Floor	1,750	NOW	\$27.50 IG*	1-5 Years	Back yard, Full Kitchen, Full Bathroom, Roll up Door. Two blocks from Civic Center Station/Twitter. Comments - Unique ground floor space near the growing land of Twitter. Former home of growing tech companies Nebia and Boosted Boards. 18 Foot ceilings.

For Further Information, please contact:

Mark D. Walker
 (415) 834-1600 ext. 204
 mwalker@coltoncommercialsf.com
 License #: 00878051

R. Ian Osborne
 (415)834-1600 ext. 209
 iosborne@coltoncommercialsf.com
 License #01936294



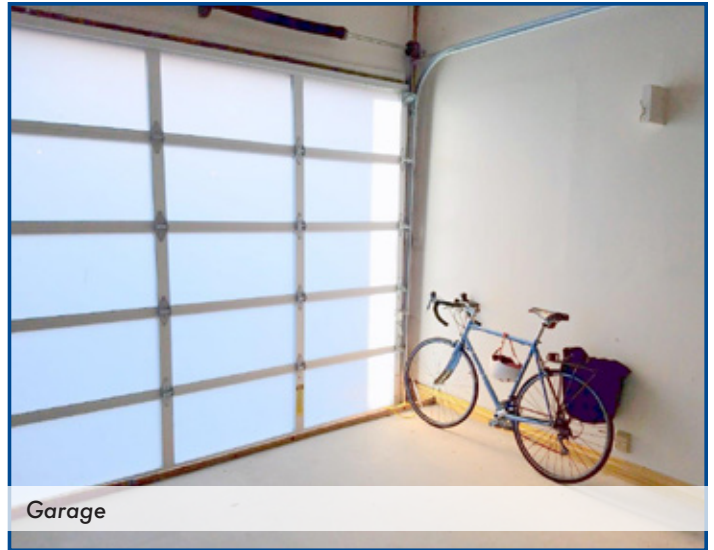
The foregoing is based upon information provided by others which we believe is accurate, however, no guarantee, warranty or representation is made. We recommend that all interested parties independently verify its accuracy and completeness. As well, any projections, assumptions, opinions, or estimates are used for example only and do not represent the current or future performance of the identified property. Your tax, financial, legal and toxic substance advisors should conduct a careful independent investigation of the property and its suitability for your needs, including land use limitations. The property is subject to prior lease, sale, change in price, or withdrawal from the market without notice.

For Lease

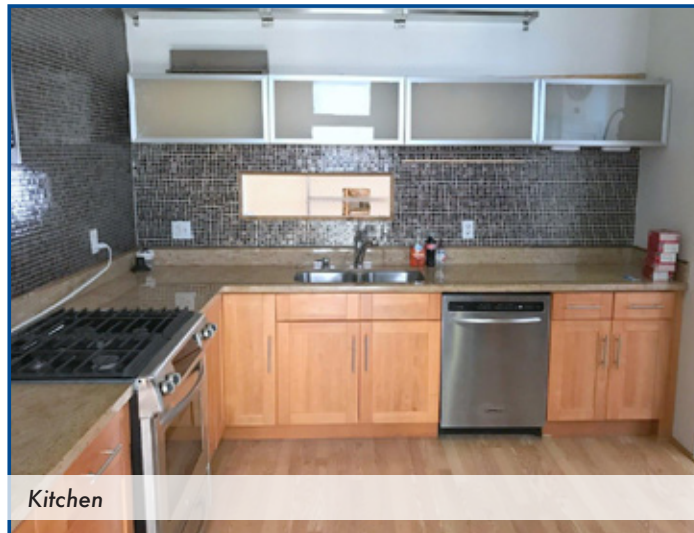
750 CLEMENTINA STREET SOMA Sub-Market



Conference Room



Garage



Kitchen