



Property Highlights

- 102,007-sf office building
- Recent renovations to commons areas, main lobby, and elevator cabs
- Parking ratio: 4/1,000
- New chillers and HVAC Energy Management System
- Close proximity to several restaurants, hotels, and retail
- Easy access to I-595, I-75 (Sawgrass Expressway), I-95, and Florida's Turnpike
- Awarded the Energy Star Label 2012 - 2014 for Operating Efficiency
- 2014 BOMA Outstanding Building of the Year Award Winner

Greg Martin, Principal
D 954 903 3900
greg.martin@avisonyoung.com

Justin Cope, Principal
D 954 903 3701
justin.cope@avisonyoung.com

Lisa Blumer, Senior Associate
D 954 903 3703
lisa.blumer@avisonyoung.com

500 W Cypress Creek Road
Suite 550
Fort Lauderdale, FL 33309



Availability

- Suite 220: 2,296 sf
- Suite 410: 3,938 *
**Available 1/1/2021*
- Suite 415: 1,447 sf
- Suite 420: 1,362 sf
- Suite 430: 3,050 sf
- Suite 500: 6,475 sf

[View Suite Video](#)

[View Suite Video](#)

[View Suite Video](#)

[View Suite Video](#)

[View Suite Video](#)

[View Suite Video](#)

Rental Rate

- \$24.00 NNN

Operating Expenses

- \$11.82

Greg Martin, Principal
D 954 903 3900
greg.martin@avisonyoung.com

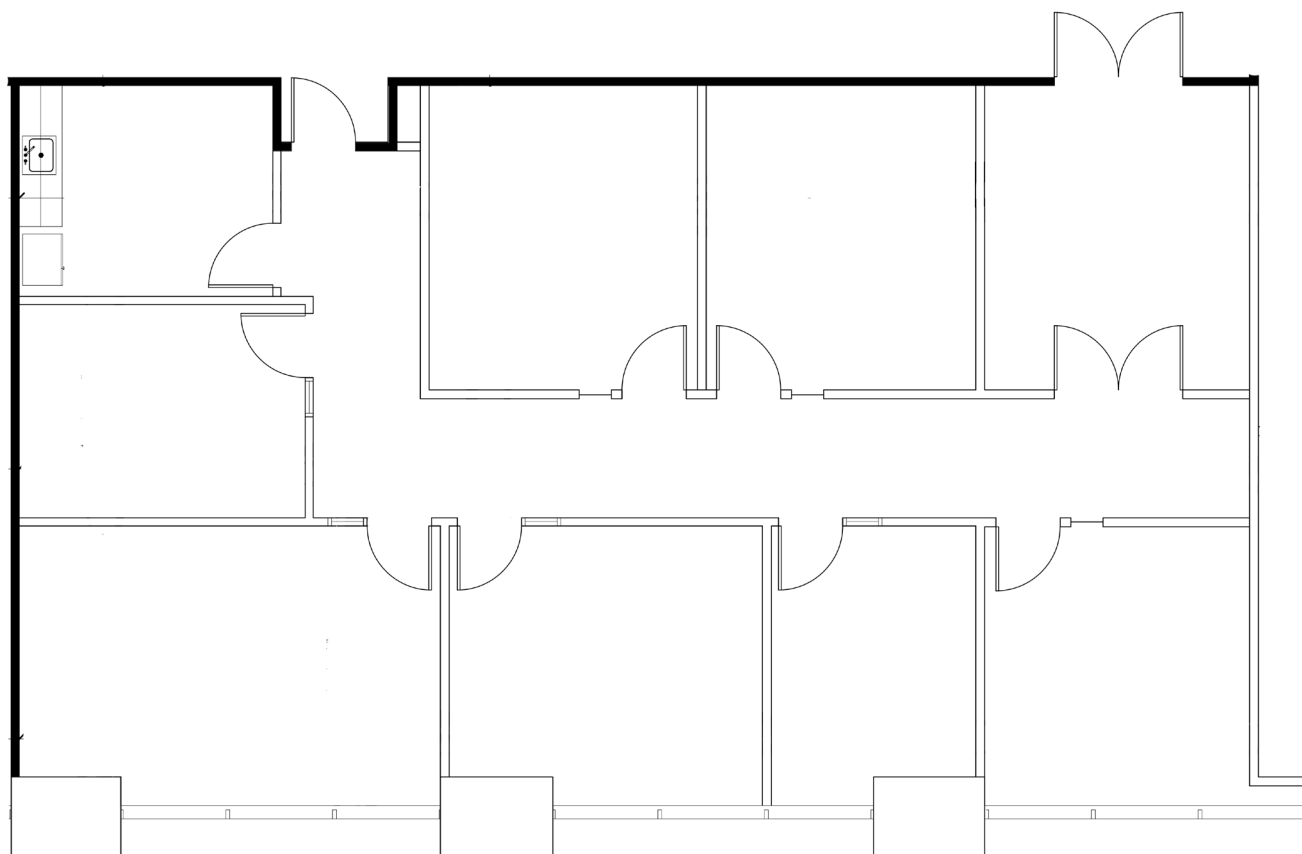
Justin Cope, Principal
D 954 903 3701
justin.cope@avisonyoung.com

Lisa Blumer, Senior Associate
D 954 903 3703
lisa.blumer@avisonyoung.com

500 W Cypress Creek Road
Suite 550
Fort Lauderdale, FL 33309

Suite 220 - 2,296 sf

[View Suite Video](#)



Greg Martin, Principal
D 954 903 3900
greg.martin@avisonyoung.com

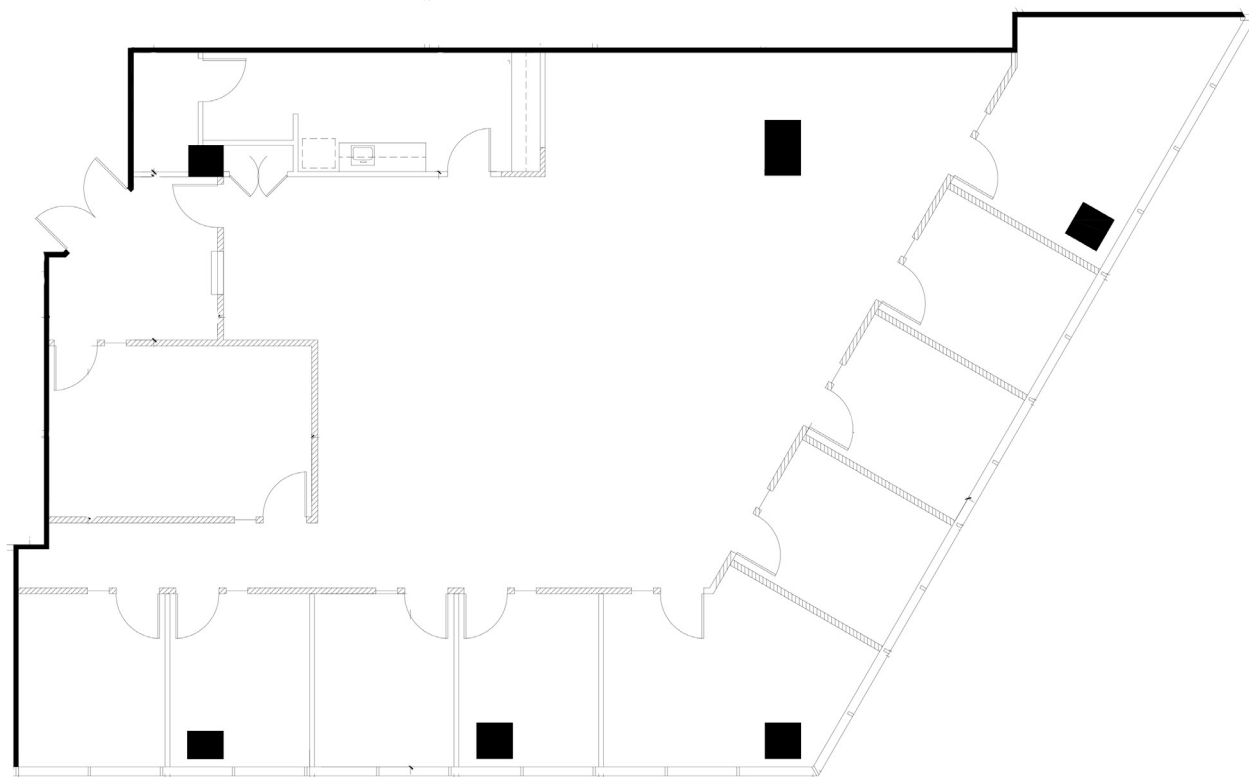
Justin Cope, Principal
D 954 903 3701
justin.cope@avisonyoung.com

Lisa Blumer, Senior Associate
D 954 903 3703
lisa.blumer@avisonyoung.com

500 W Cypress Creek Road
Suite 550
Fort Lauderdale, FL 33309

Suite 410 - 3,938 sf
Available 1/1/2021

[View Suite Video](#)



Greg Martin, Principal
D 954 903 3900
greg.martin@avisonyoung.com

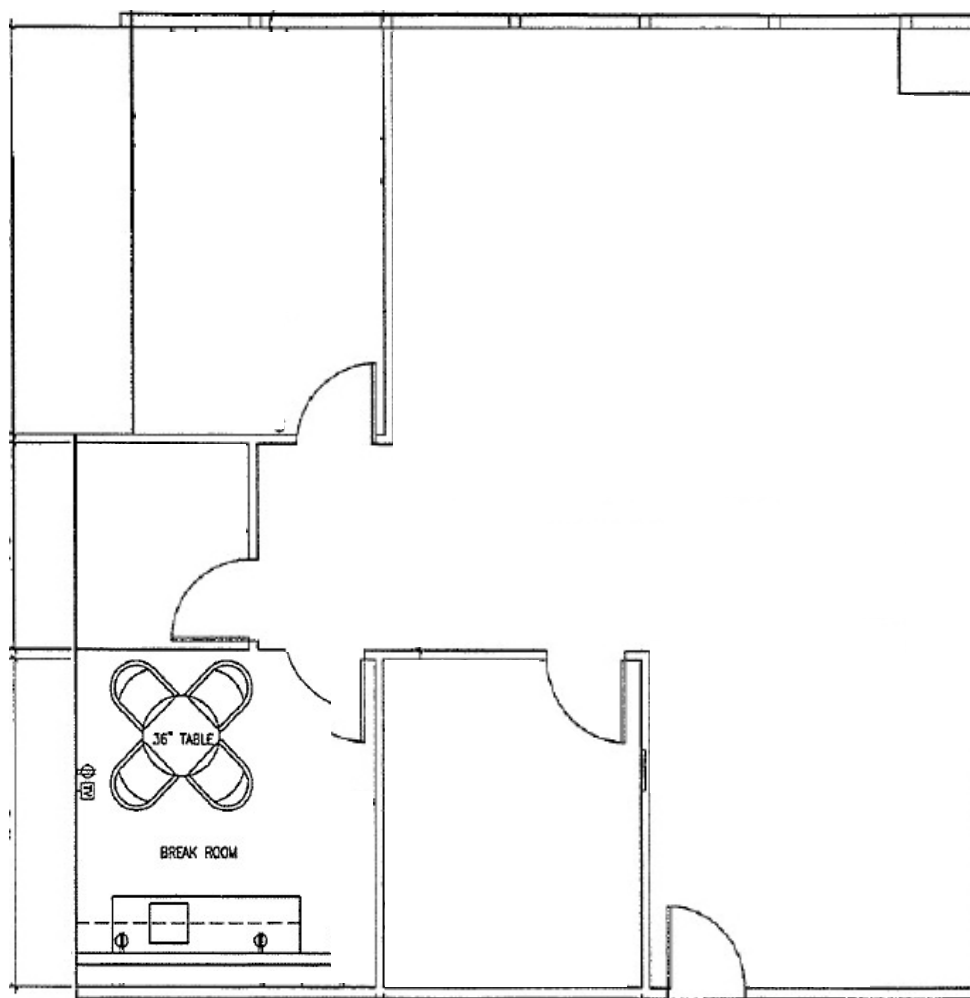
Justin Cope, Principal
D 954 903 3701
justin.cope@avisonyoung.com

Lisa Blumer, Senior Associate
D 954 903 3703
lisa.blumer@avisonyoung.com

500 W Cypress Creek Road
Suite 550
Fort Lauderdale, FL 33309

Suite 415 - 1,447 sf

[View Suite Video](#)



Greg Martin, Principal
D 954 903 3900
greg.martin@avisonyoung.com

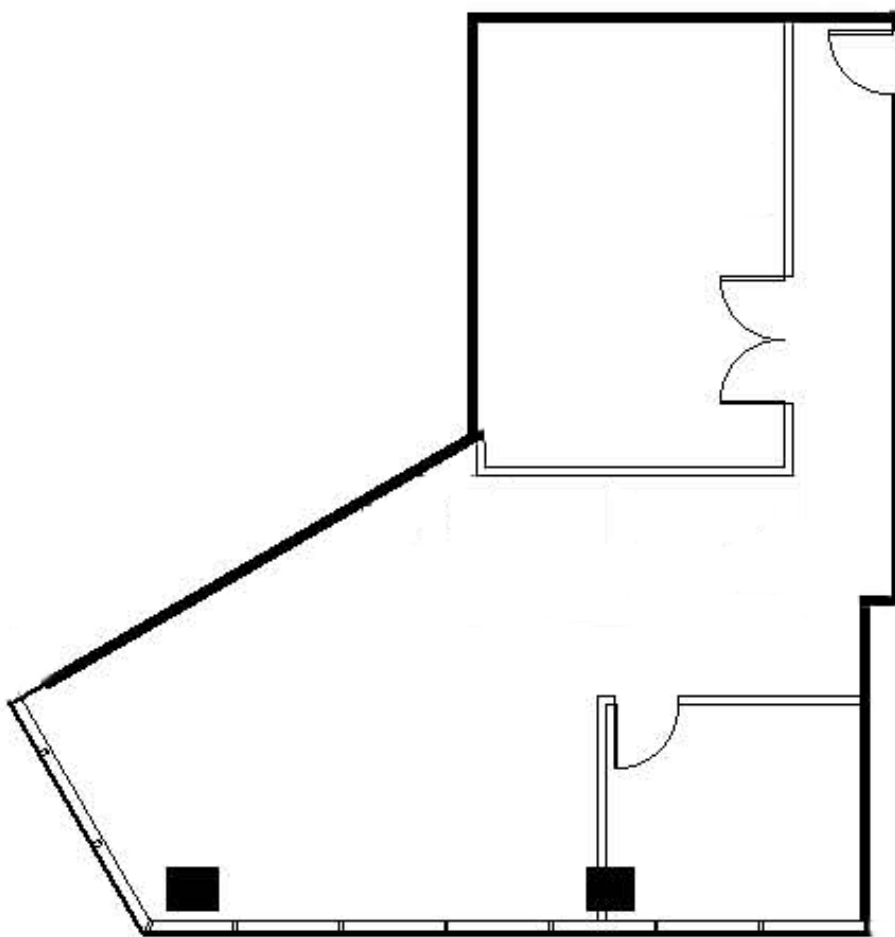
Justin Cope, Principal
D 954 903 3701
justin.cope@avisonyoung.com

Lisa Blumer, Senior Associate
D 954 903 3703
lisa.blumer@avisonyoung.com

500 W Cypress Creek Road
Suite 550
Fort Lauderdale, FL 33309

Suite 420 - 1,362 sf

[View Suite Video](#)



Greg Martin, Principal
D 954 903 3900
greg.martin@avisonyoung.com

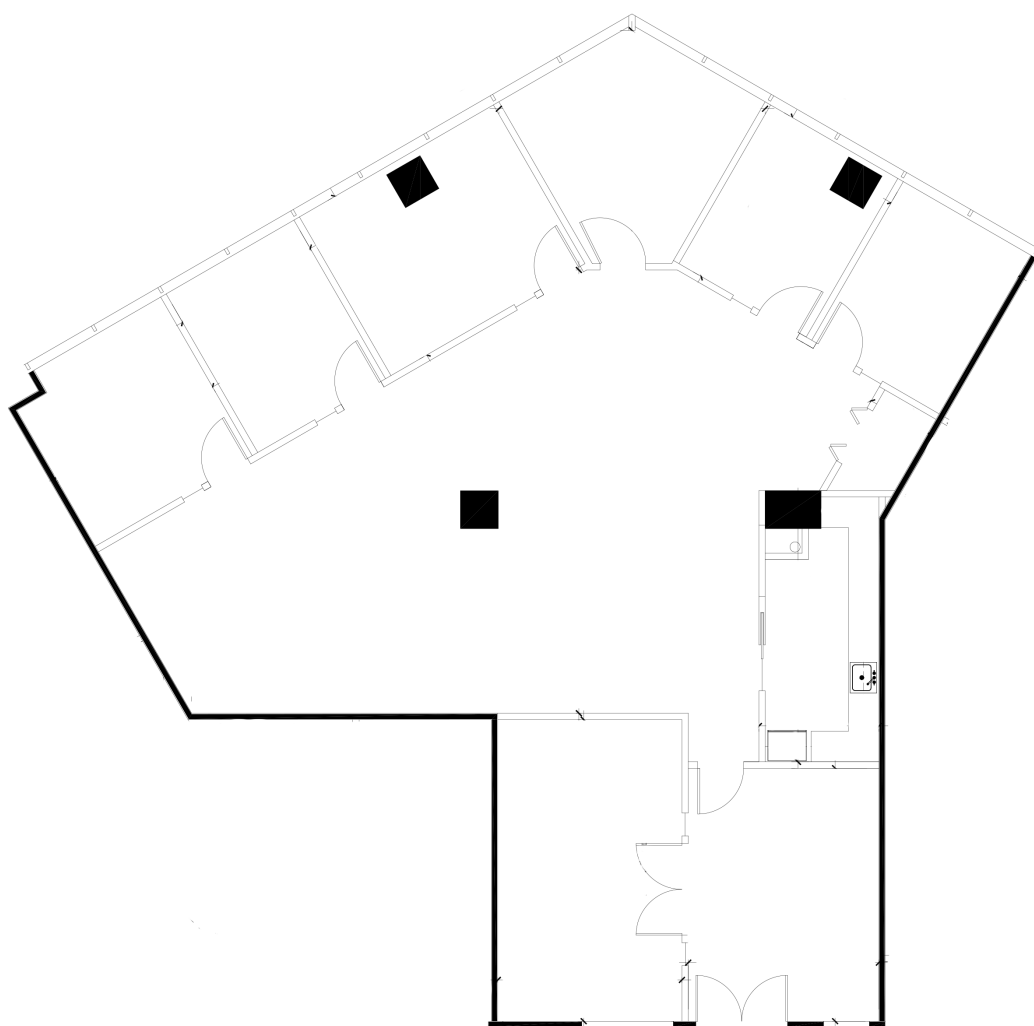
Justin Cope, Principal
D 954 903 3701
justin.cope@avisonyoung.com

Lisa Blumer, Senior Associate
D 954 903 3703
lisa.blumer@avisonyoung.com

500 W Cypress Creek Road
Suite 550
Fort Lauderdale, FL 33309

Suite 430 - 3,050 sf

[View Suite Video](#)



Greg Martin, Principal
D 954 903 3900
greg.martin@avisonyoung.com

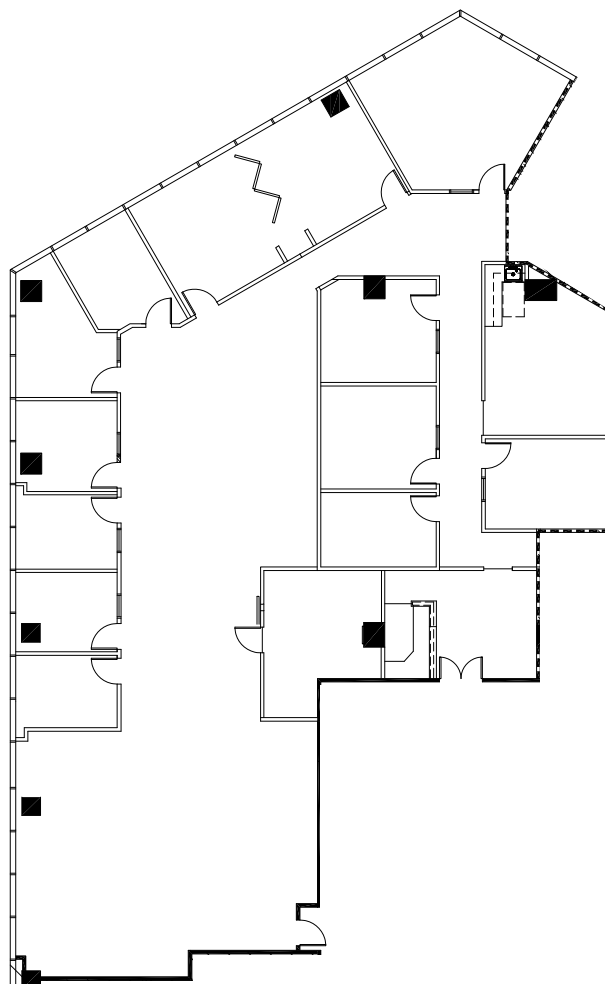
Justin Cope, Principal
D 954 903 3701
justin.cope@avisonyoung.com

Lisa Blumer, Senior Associate
D 954 903 3703
lisa.blumer@avisonyoung.com

500 W Cypress Creek Road
Suite 550
Fort Lauderdale, FL 33309

Suite 500 - 6,475 sf

[View Suite Video](#)



Greg Martin, Principal
D 954 903 3900
greg.martin@avisonyoung.com

Justin Cope, Principal
D 954 903 3701
justin.cope@avisonyoung.com

Lisa Blumer, Senior Associate
D 954 903 3703
lisa.blumer@avisonyoung.com

500 W Cypress Creek Road
Suite 550
Fort Lauderdale, FL 33309

Property Location



RESTAURANTS

- 1 J Alexander's
- 2 Dunkin' Donuts
- 3 Azteca Mexican
- 4 Bokampers
- 5 First Watch
- 6 Panera
- 7 Outback
- 8 Friday's

MISCELLANEOUS

- 1 Westfield Broward Mall
- 2 Target
- 3 The Fountains - Plantation
- 4 Publix
- 5 Fedex Print & Ship
- 6 Bank of America
- 7 Wells Fargo
- 8 Tower Shops
- 9 Plantation Preserve Golf Course & Club

Greg Martin, Principal
D 954 903 3900
greg.martin@avisonyoung.com

Justin Cope, Principal
D 954 903 3701
justin.cope@avisonyoung.com

Lisa Blumer, Senior Associate
D 954 903 3703
lisa.blumer@avisonyoung.com

500 W Cypress Creek Road
Suite 550
Fort Lauderdale, FL 33309