

32

Between Howard & Grand
MERCER STREET

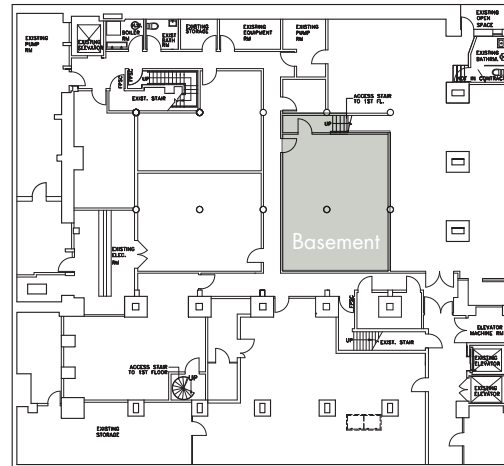
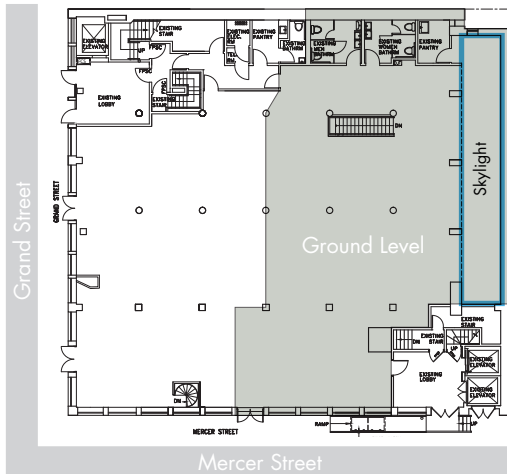


DETAILS :

Ground Level.....	4,000 SF
Basement.....	722 SF
Frontage.....	35'
Ceiling Height.....	15'
Term.....	Long Term
Possession.....	Immediate
Asking Rent.....	Please Inquire

FEATURES :

- Mercer Street facing division
 - Large signage flag
 - 60' of skylights in rear
 - Contiguous lower level storage space
 - Additional 34,400 RSF of contiguous office space is available
-



NEIGHBORS :

- Kenzo
- Alexander Wang
- NikeLab
- Off-White
- Suitsupply
- James Perse
- Acne Studios
- CB2
- Billionaire Boys Club
- Oak & Fort
- VFiles
- Palace Skateboards
- Stadium Goods
- Muji

PLEASE CONTACT:

Christopher Owles

212.604.9002

chris@sinvin.com

SINVIN
COMMERCIAL REAL ESTATE & ADVISORY

32

Between Howard & Grand MERCER STREET

WOOSTER STREET

- HANSON FITNESS
- SAM BROCATO SALON
- JEFFREY DEITCH
- KAI GALLERY
- **FLAIR**
- **Acne**
- **FRAME DENIM**
- **theory**
- **STONE ISLAND**
- **Kartell**

GREENE STREET

- GANDIA BLASCO
- GUDRUN SJORDEN
- **Artemide**
- **flow**
- **FIXED RAVEN**
- **IF SOHO**
- DANIEL PATRICK
- **RAIN QUOTIDIEN**
- **ZADIG & VOLTAIRE MEN'S**
- **OFF-WHITE**
- COCO MAT
- GALLI
- **Babeland**
- ANTIQUE GARAGE

MERCER STREET

- TYLR
- **GANNI**
- THINK COFFEE
- **BOSE**
- DERMALOGICA
- **WELLS FARGO**

BROADWAY

- TOPSHOP
- CITIBANK
- **Timberland**
- ALDO

CROSBY STREET

GRAND STREET

- **Hästens**
- TEAM GALLERY
- **Boffi**
- THE WEBSTER
- **Tom Dixon.**
- STUDIOANISE
- JEFFREY DEITCH
- ANITA ROGERS GALLERY

GRAND STREET

- **MM6**
- VANS DQM GENERAL
- **WOLF & BENDER**
- **ALEXANDER WANG**
- RONALD FELDMAN FINE ARTS
- LEE BROOM
- CITE
- **USM**
- **ksubi**
- **FOSCARINI**
- BLUE IN GREEN
- FAITH CONNEXION
- ANTHOM
- NIKE LAB
- 3x1
- BILLIONAIRE BOYS CLUB
- OAK + FORT

GRAND STREET

- **KENZO**
- **DUANE reade**
- **MUJI**
- **CB2**
- **CB2**
- JUBILEE MARKET
- **NECESSARY CLOTHING**
- **NECESSARY CLOTHING**
- **G-STAR RAW**
- VFILES
- *agnès b.*

- **SAGA SHOES**
- MYSTIQUE
- **MICHAEL KORS**
- VALLEY NATIONAL
- **NECESSARY CLOTHING**
- **Foot Locker**
- **LAICALE**
- TATE & YOKO
- RED DIGITAL CINEMA
- Le Botaniste
- PARACHUTE
- **AETHER**
- INDUSTRY WEST
- HENRYBUILT
- **Champion**
- **Ry 13**
- *Rich Owens*

CANAL STREET

CANAL STREET

- CANAL LIGHTING & PARTS

- PALACE SKATEBOARDS
- STADIUM GOODS
- **STEVE MADDEN**

- OMG
- PROPEL FOOTWEAR
- **OPENING CEREMONY**
- SARAJO
- MICHELE VARIAN