

RICHBORO PLAZA SHOPPING CENTER
2ND STREET PIKE & NEWTOWN-RICHBORO RD
 RICHBORO, PA

±24,650 SF ANCHOR WITH UPDATED FACADE AVAILABLE

JOIN



property highlights.

- End cap anchor available
- Strong Richboro demographics
- Located in the center of the trade area
- Rite Aid anchored center
- Signalized access from both Second Street Pike & Route 332
- Facade upgrade and new monument signage planned!

stats.

2017 DEMOGRAPHICS*	1 MILE	3 MILES	5 MILES
EST. POPULATION	6,353	41,901	132,563
EST. HOUSEHOLDS	2,163	15,110	50,003
EST. AVG. HH INCOME	\$155,763	\$131,633	\$119,314

SECOND STREET PIKE TRAFFIC COUNT: 19,755 VPD *ESRI 2017
 ROUTE 332 ROAD TRAFFIC COUNT: 19,672 VPD



MetroCommercial.com | PHILADELPHIA, PA | PLYMOUTH MEETING, PA | MOUNT LAUREL, NJ | NAPLES, FL | MIAMI, FL

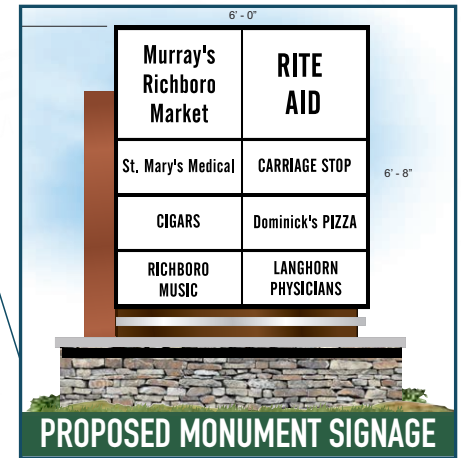
get in touch.

ALESSANDRO RANDAZZO

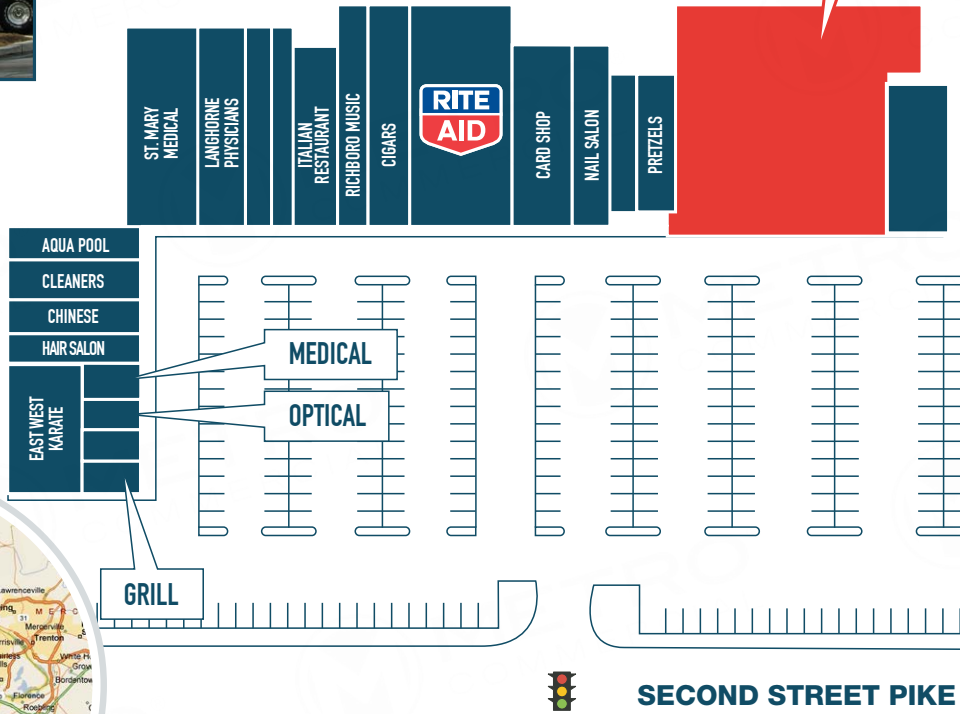
office 856.866.1900
 direct 856.222.3014
arandazzo@metrocommercial.com

DAVID JUDD

office 856.866.1900
 direct 856.222.3037
djudd@metrocommercial.com



AVAILABLE
±24,650 SF



The information and images contained herein are from sources deemed reliable. However, Metro Commercial Real Estate, Inc. makes no representation whatsoever as to their accuracy or authenticity. Images shown may be modified for illustrative purposes. Images may be out-of-date and not current. 12.19.18

2ND STREET PIKE & NEWTOWN-RICHBORO ROAD RICHBORO, PA



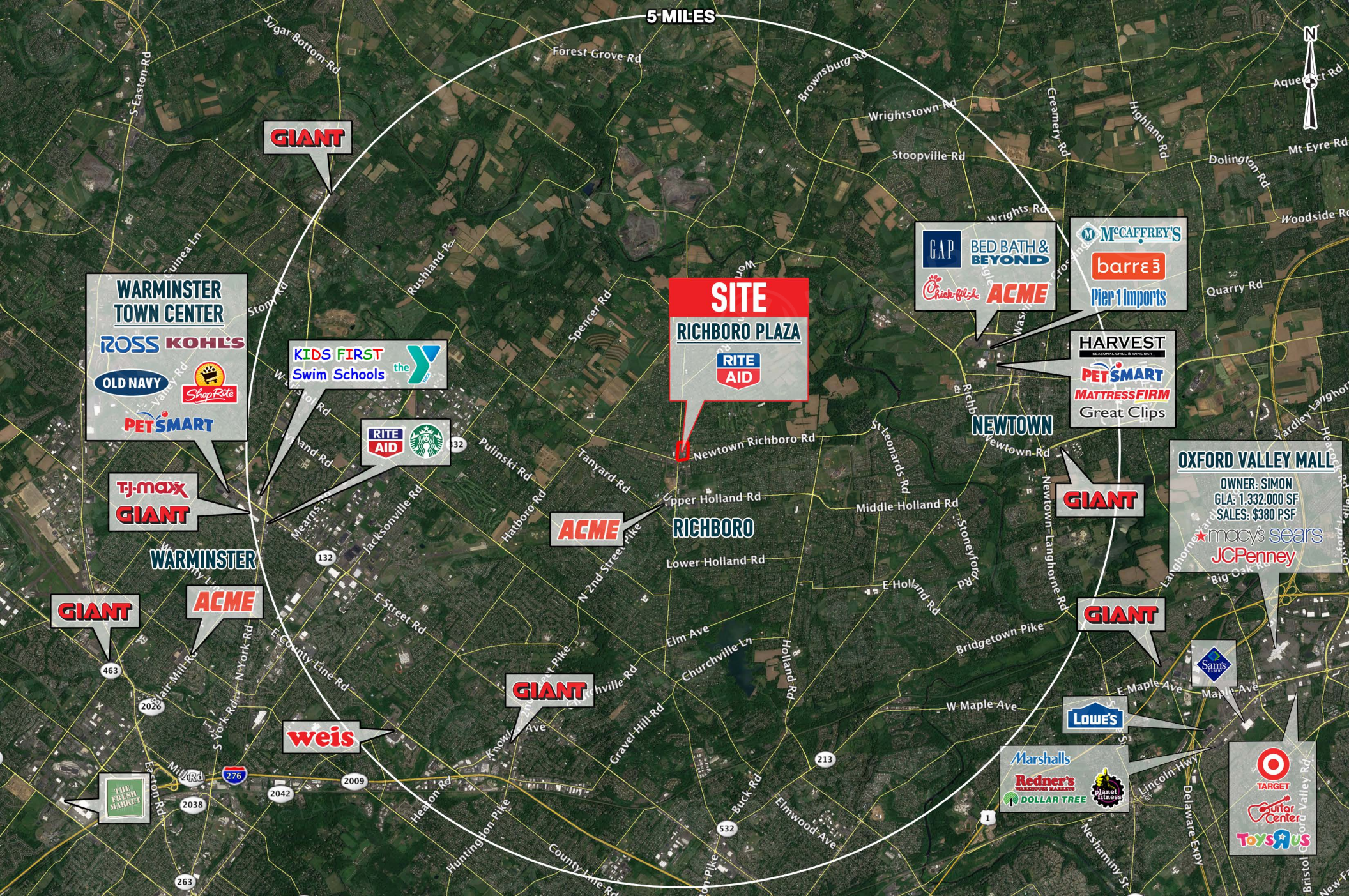
PROPOSED FACADE RENOVATIONS



The information and images contained herein are from sources deemed reliable. However, Metro Commercial Real Estate, Inc. makes no representation whatsoever as to their accuracy or authenticity. Images shown may be modified for illustrative purposes. Images may be out-of-date and not current. 12.19.18

2ND STREET PIKE & NEWTOWN-RICHBORO ROAD
RICHBORO, PA

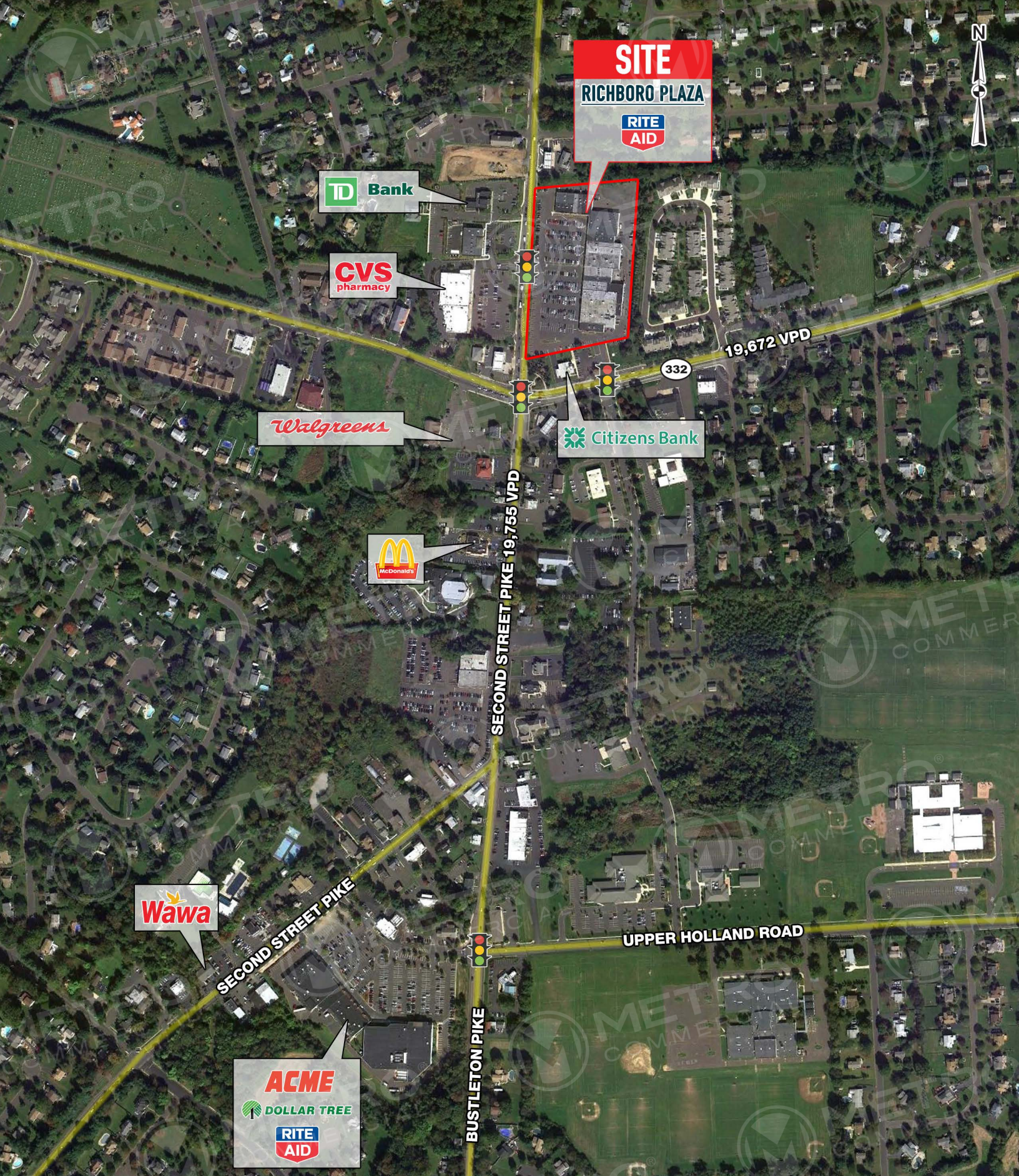




The information and images contained herein are from sources deemed reliable. However, Metro Commercial Real Estate, Inc. makes no representation whatsoever as to their accuracy or authenticity. Images shown may be modified for illustrative purposes. Images may be out-of-date and not current. 12.19.18

2ND STREET PIKE & NEWTOWN-RICHBORO ROAD RICHBORO, PA





The information and images contained herein are from sources deemed reliable. However, Metro Commercial Real Estate, Inc. makes no representation whatsoever as to their accuracy or authenticity. Images shown may be modified for illustrative purposes. Images may be out-of-date and not current. 12.19.18

2ND STREET PIKE & NEWTOWN-RICHBORO ROAD RICHBORO, PA

