

INDUSTRIAL/COMMERCIAL LAND FOR SALE

TWO PARCELS TOTALING 14.38 ACRES

FRENCH CAMP, CA

LISTING DATA

AVAILABLE LAND:

- (A) 6344 S El Dorado Street
APN 193-020-010
6.86± acres | Zoned: C-G
- (B) 6787 S. El Dorado Street
APN 193-070-110
7.52± acres | Zoned: C-G

COMMENTS:

- Two legal parcels ranging in size from 6.5± acres to 7.52± acres.
- Excellent visibility and easy access from both French Camp Road and El Dorado Street.
- Immediate access to Interstate 5 via new French Camp Road interchange.
- CG zoning allows for a wide variety of commercial uses.
- Located in unincorporated county- to be developed with well and septic.

ECONOMIC DATA

SALE PRICE: Contact Broker



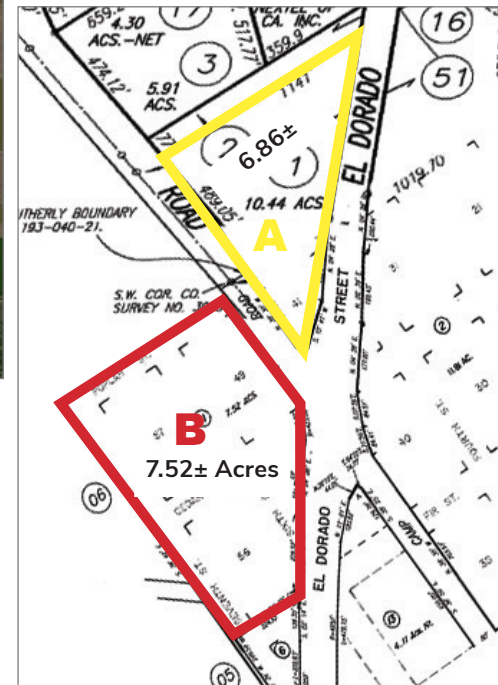
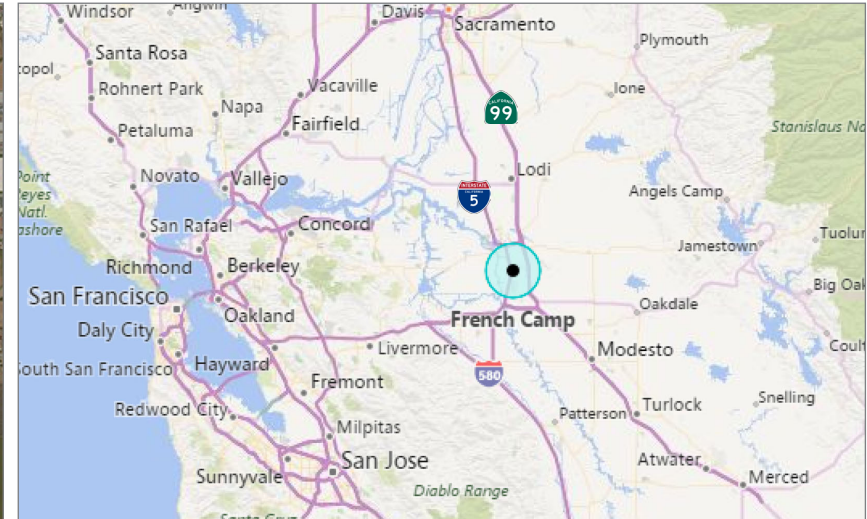
Mark J. Reckers, SIOR
BRE #00938704
mreckers@lee-associates.com
D 209.983.6838

All information furnished regarding property for sale, rental or financing is from sources deemed reliable, but no warranty or representation is made to the accuracy thereof and same is submitted to errors, omissions, change of price, rental or other conditions prior to sale, lease or financing or withdrawal without notice. No liability of any kind is to be imposed on the broker herein.

INDUSTRIAL/COMMERCIAL LAND FOR SALE

TWO PARCELS TOTALING 14.38 ACRES

FRENCH CAMP, CA



PARCEL MAP

Mark J. Reckers, SIOR
BRE #00938704
mreckers@lee-associates.com
D 209.983.6838

All information furnished regarding property for sale, rental or financing is from sources deemed reliable, but no warranty or representation is made to the accuracy thereof and same is submitted to errors, omissions, change of price, rental or other conditions prior to sale, lease or financing or withdrawal without notice. No liability of any kind is to be imposed on the broker herein.