

FOR LEASE

LA JOLLA PACIFIC BUILDING
7910-7924 Ivanhoe Avenue
La Jolla, CA 92037



CAPITAL GROWTH
PROPERTIES, INC.

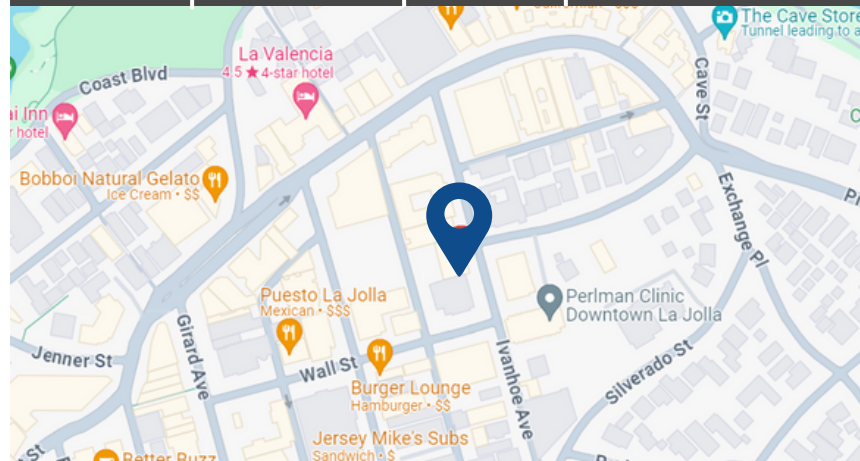


PROPERTY HIGHLIGHTS

- ✓ High-visibility storefront in La Jolla.
- ✓ Great office space.
- ✓ Prominent building signage for brand exposure
- ✓ Heavy foot traffic area near hotels, restaurants, shops
- ✓ 24-hour building access, HVAC, and parking

SPACES AVAILABLE

TYPE	SUITE	SF	RATE
Office	1	514	\$3.20/PSF +electric
Retail	7910	653	\$3.50/PSF +NNN (\$1)



www.cgpincre.com

FOR LEASE

LA JOLLA PACIFIC BUILDING
7910-7924 Ivanhoe Avenue
La Jolla, CA 92037



CAPITAL GROWTH
PROPERTIES, INC.



www.cgpincre.com

FOR LEASE

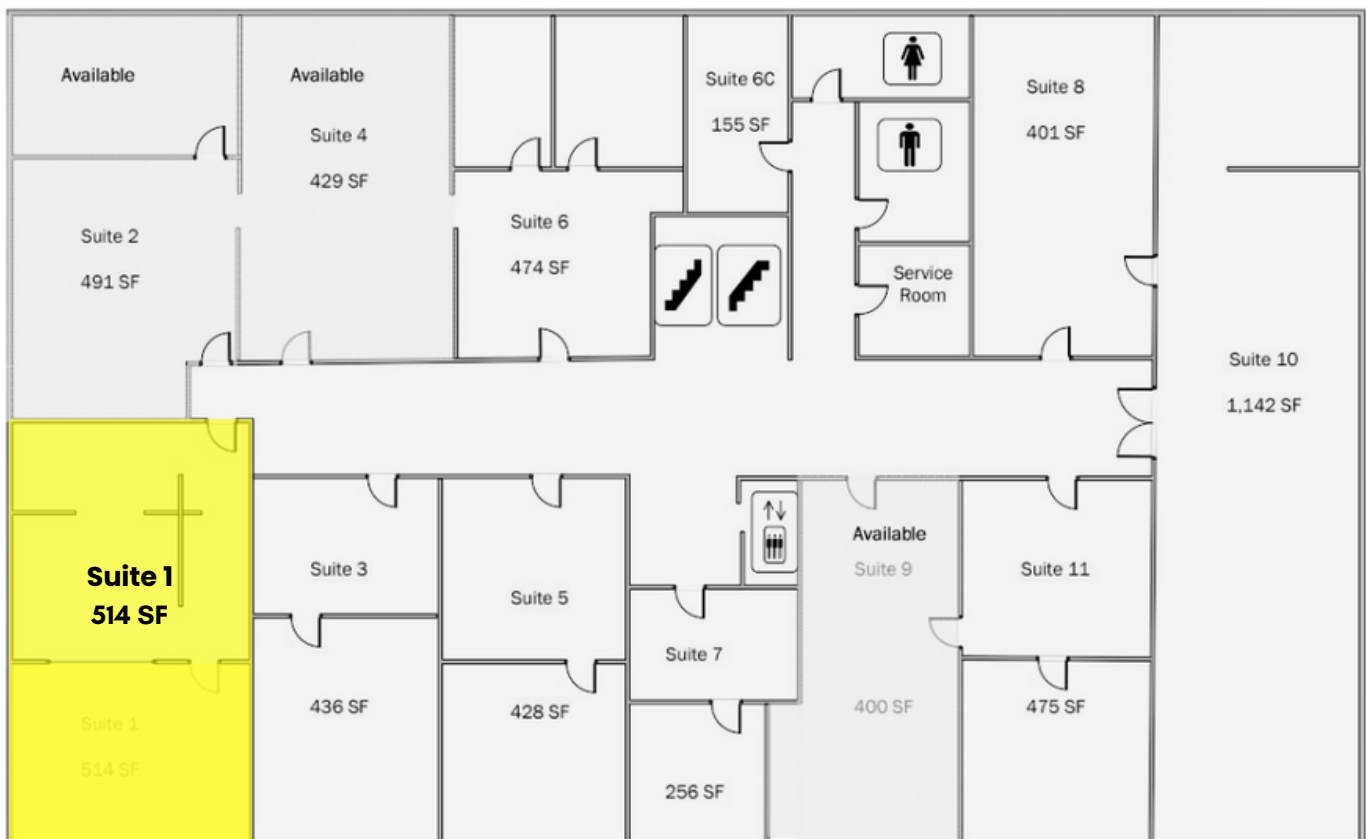
LA JOLLA PACIFIC BUILDING
7910-7924 Ivanhoe Avenue
La Jolla, CA 92037



CAPITAL GROWTH
PROPERTIES, INC.

FLOOR PLAN

Suite 1
Office space



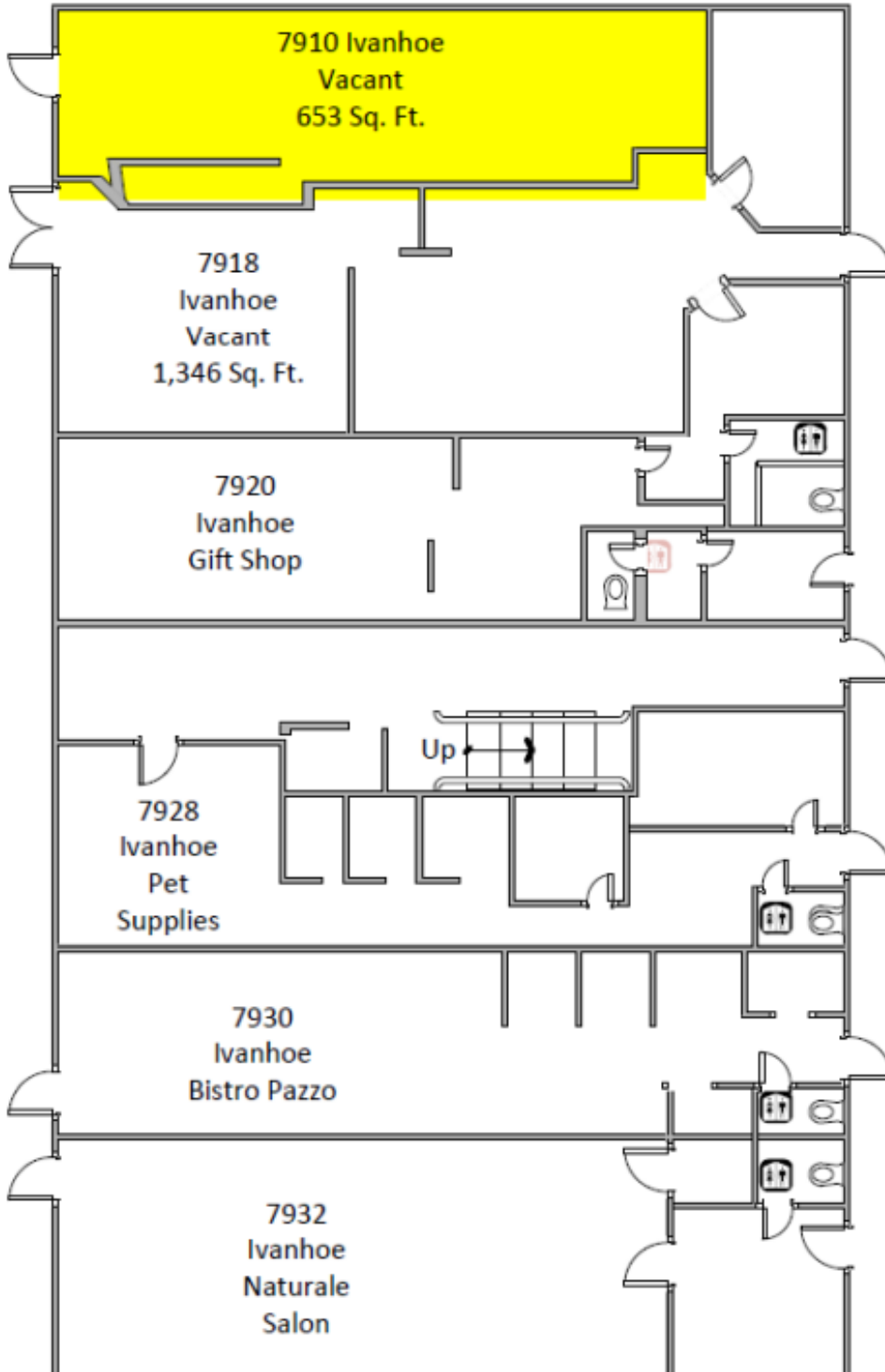
FOR LEASE

LA JOLLA PACIFIC BUILDING
7910-7924 Ivanhoe Avenue
La Jolla, CA 92037



CAPITAL GROWTH
PROPERTIES, INC.

FLOOR PLAN



**7910 Ivanhoe Avenue
Retail space**

If you are interested in the retail space at 7910 Ivanhoe Avenue, please contact:
Jill Morton
jmorton@cgpinc.com

FOR LEASE

LA JOLLA PACIFIC BUILDING
7910-7924 Ivanhoe Avenue
La Jolla, CA 92037




CAPITAL GROWTH
PROPERTIES, INC.



7910-7924 Ivanhoe Avenue – La Jolla, CA 92037



Greg Wagner
Senior Vice President
gwagner@cgpinc.com
858.729.9306
CA Lic: 01120775



Todd Law
Senior Vice
President
tlaw@cgpinc.com
858.729.9305
CA Lic. 01309241
WA Lic. 27587




Jill Morton
Senior Vice President
jmorton@cgpinc.com
619.955.2877
CA Lic: 00868254

If you are interested in the retail space located at 7910 Ivanhoe Avenue, please contact Jill Morton.

For inquiries concerning the office space in Suite 1, please reach out to Jill Morton, Greg Wagner, or Todd Law, who are available to assist you.

Capital Growth Properties, Inc.

 1120 Silverado Street, Suite 200
La Jolla, CA 92037

 858.729.9300

 www.cgpinc.com

 @cgpinc

www.cgpinc.com