

BRODERICK
• GROUP •

 TISHMAN SPEYER

520 PIKE



For leasing inquiries, please contact:

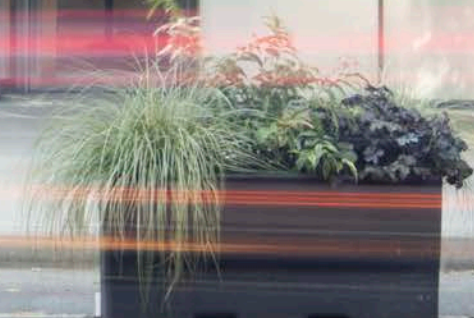
LARRY ALMELEH

almeleh@broderickgroup.com

206.910.0859

5 2 0

520



CHANGE HAS ARRIVED

520
PIKE

PREMIER LOCATION

At the corner of Pike Street and Sixth Avenue in Seattle's downtown central business district, the property is easily accessible by freeway, public transit, bike and ferry. 520 Pike is located within a rich amenity base, adjacent to diverse hotel, dining and retail options, as well as the Washington Athletic Club.

PANORAMIC VIEWS

520 Pike boasts some of the most striking views in Seattle, framing water, city and mountain views with efficient floor plates and a continuous glass façade.

EXCLUSIVE AMENITIES

Tenant-only amenities at 520 Pike include ample parking with eight EV charging stations, secure, card-accessed bike storage, a conference center and state-of-the-art fitness center with shower facilities and complimentary towel service.

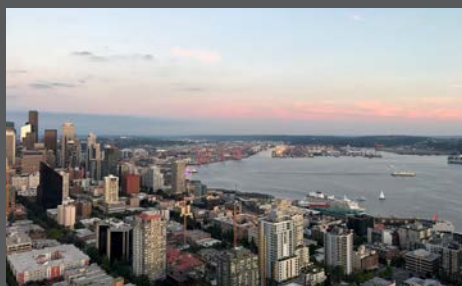
SUSTAINABILITY

520 Pike is LEED® Gold (EB) certified and Fitwel certified.

TRANSFORMATIVE RENOVATION

We completed a transformative renovation of 520 Pike in 2018. Designed by Olson Kundig, paying homage to the Pacific Northwest.

520 Pike is a 29-story, Class A office building offering industry-leading tenants over 396,000 RSF of world-class workspace.



For leasing inquiries, please contact:

LARRY ALMELEH
ALMELEH@BRODERICKGROUP.COM
206.910.0859

BRODERICK
• GROUP •

 TISHMAN SPEYER

The information contained herein has been given to us by the owner or sources that we deem reliable. We have no reason to doubt its accuracy, but we do not guarantee it. Prospective tenants should carefully verify all information contained herein.

JANUARY 2024

520
PIKE

For leasing inquiries, please contact:
LARRY ALMELEH
ALMELEH@BRODERICKGROUP.COM
206.910.0859

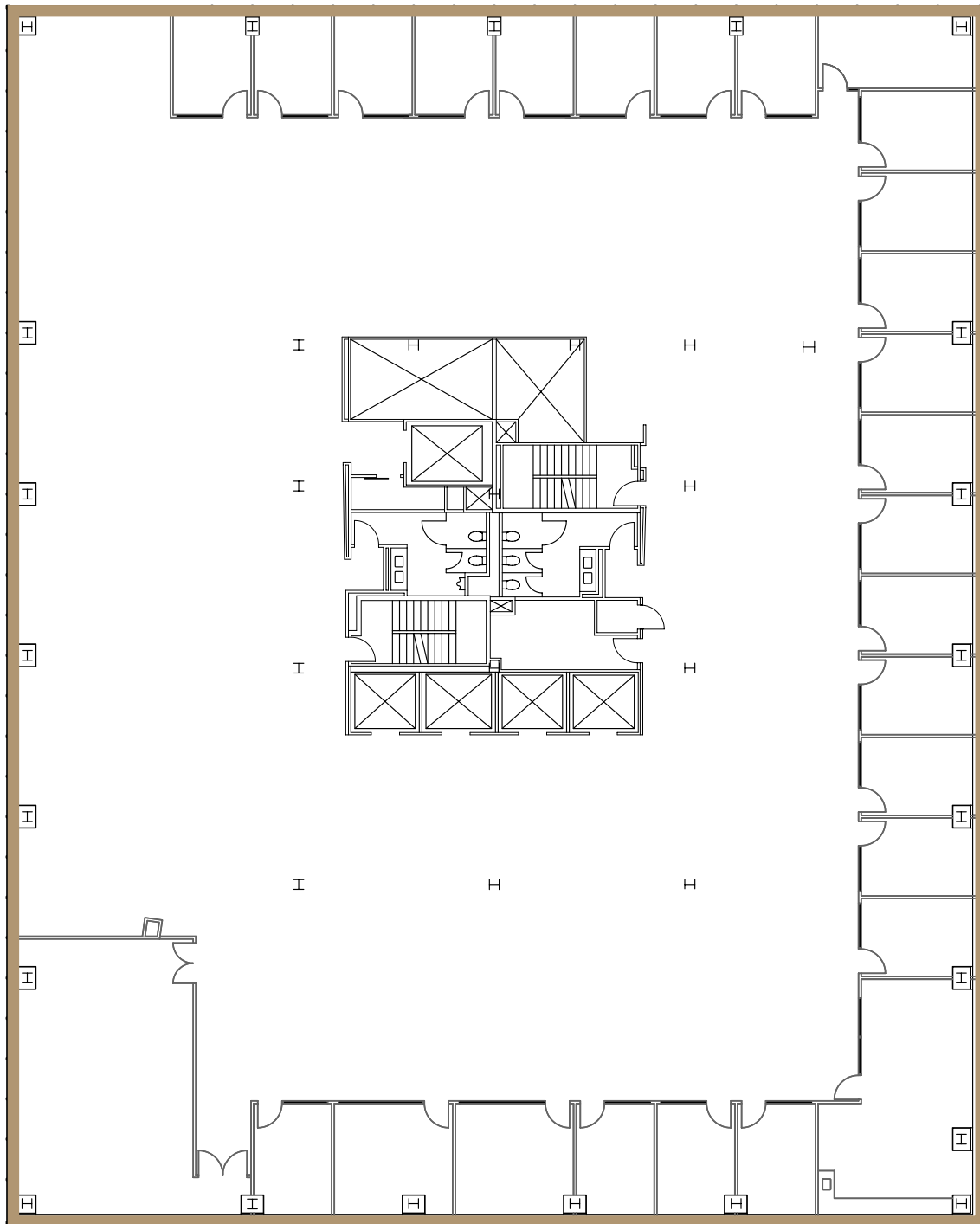
Suite	RSF	Availability	Comments
1900 + 2000	36,401	Immediately	Two full contiguous floors with interstitial stair.
2800	18,612	Immediately	Full floor with mix of private offices and open areas. Exposed ceiling in portion of suite. Beautiful top of building views. VIRTUAL TOUR
2000	18,218	Immediately	Full floor, beautiful views. Mix of private offices and open areas. VIRTUAL TOUR
1900	18,183	Immediately	Full floor, beautiful views. Mix of private offices and open areas. VIRTUAL TOUR
1420+1440	7,154	Immediately	Combined suites.
1420	3,870	Immediately	Northwest corner suite with conference room. VIRTUAL TOUR
1375	3,708	Immediately	Nine perimeter private offices and large open area. VIRTUAL TOUR
1005	3,528	Immediately	Northwest corner suite with five private offices, conference room, kitchen, and open area. VIRTUAL TOUR
1440	3,285	Immediately	Northeast corner. Mix of private offices, conference rooms, and open space. VIRTUAL TOUR
975	3,052	Immediately	Four private offices, kitchen, and bullpen. VIRTUAL TOUR
1305+1310	2,883	6/1/2024	Combined suites.
2775	2,281	Immediately	Southeast corner suite near top of building southern and eastern city views. Elevator lobby exposure.
2500	2,208	Immediately	Six private offices, conference room, reception area.
1310	2,041	6/1/2024	Five perimeter offices, conference room, kitchen and open bullpen.
2225	1,897	Immediately	Three perimeter private offices plus interior offices and conference rooms.
1305	842	Immediately	One private office, open area. VIRTUAL TOUR
1120	760	Immediately	Large west facing private office on window, reception area and storage room. VIRTUAL TOUR

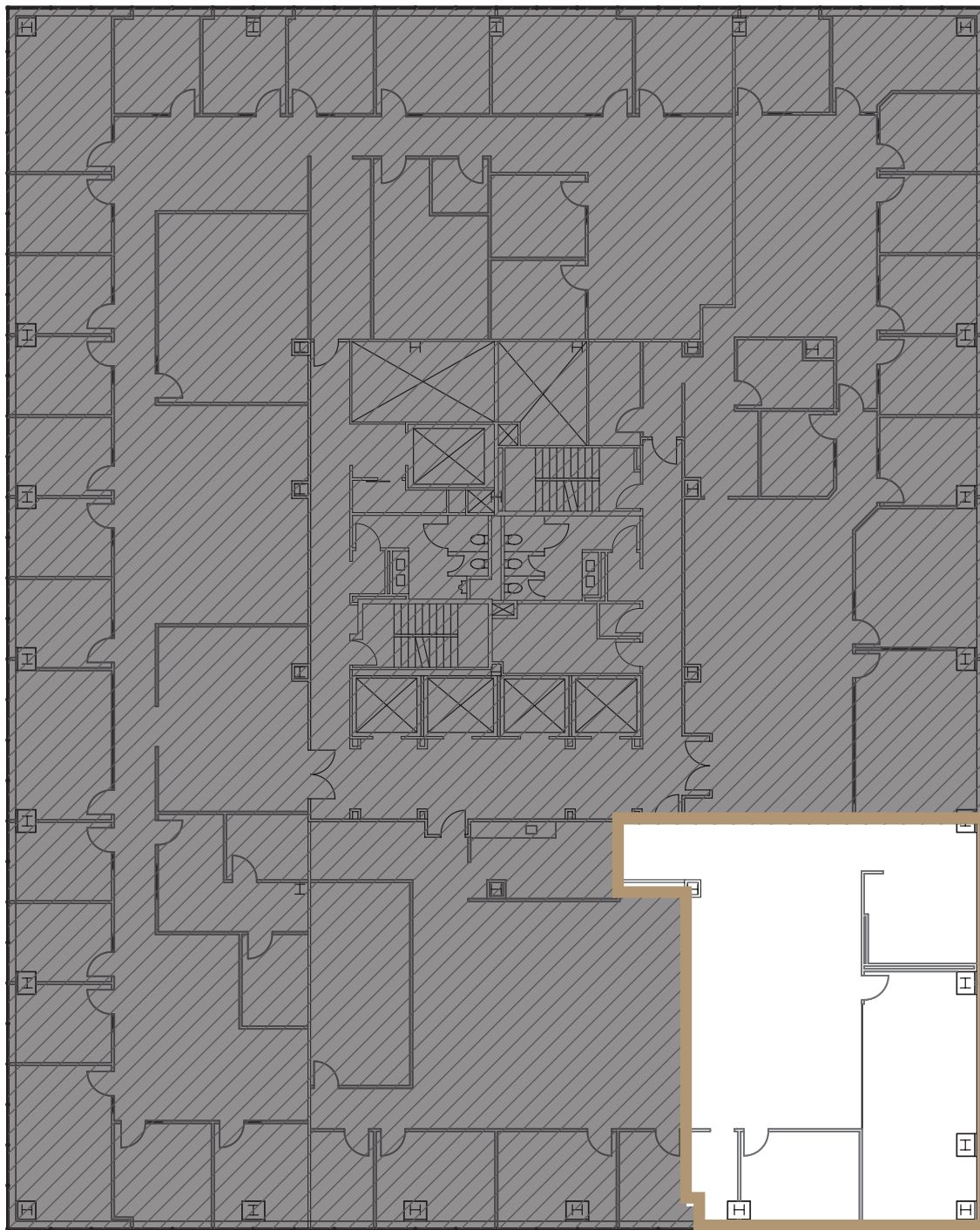
520
PIKE

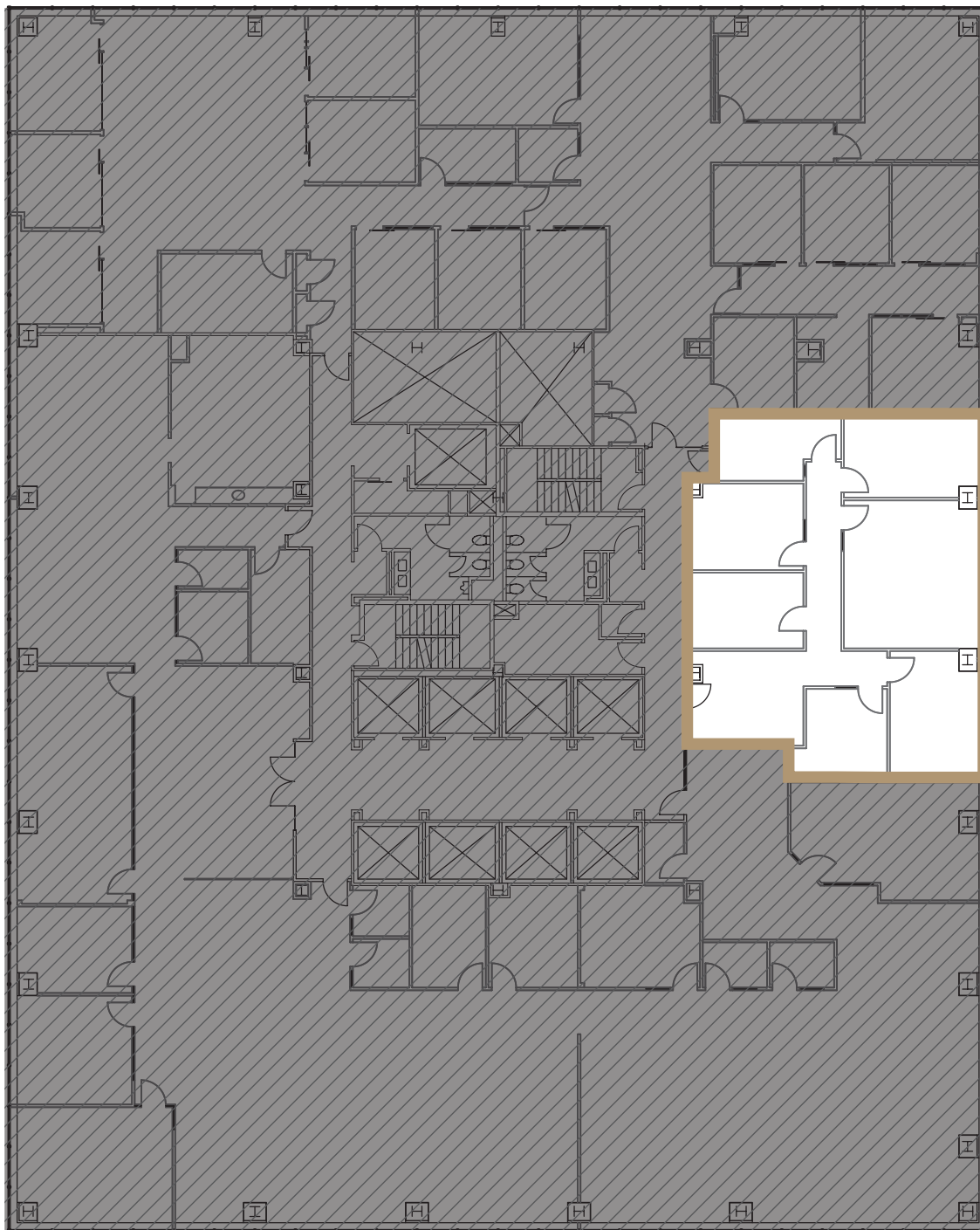
FLOOR 28 | SUITE 2800

18,612 RSF

[VIEW VIRTUAL TOUR](#)

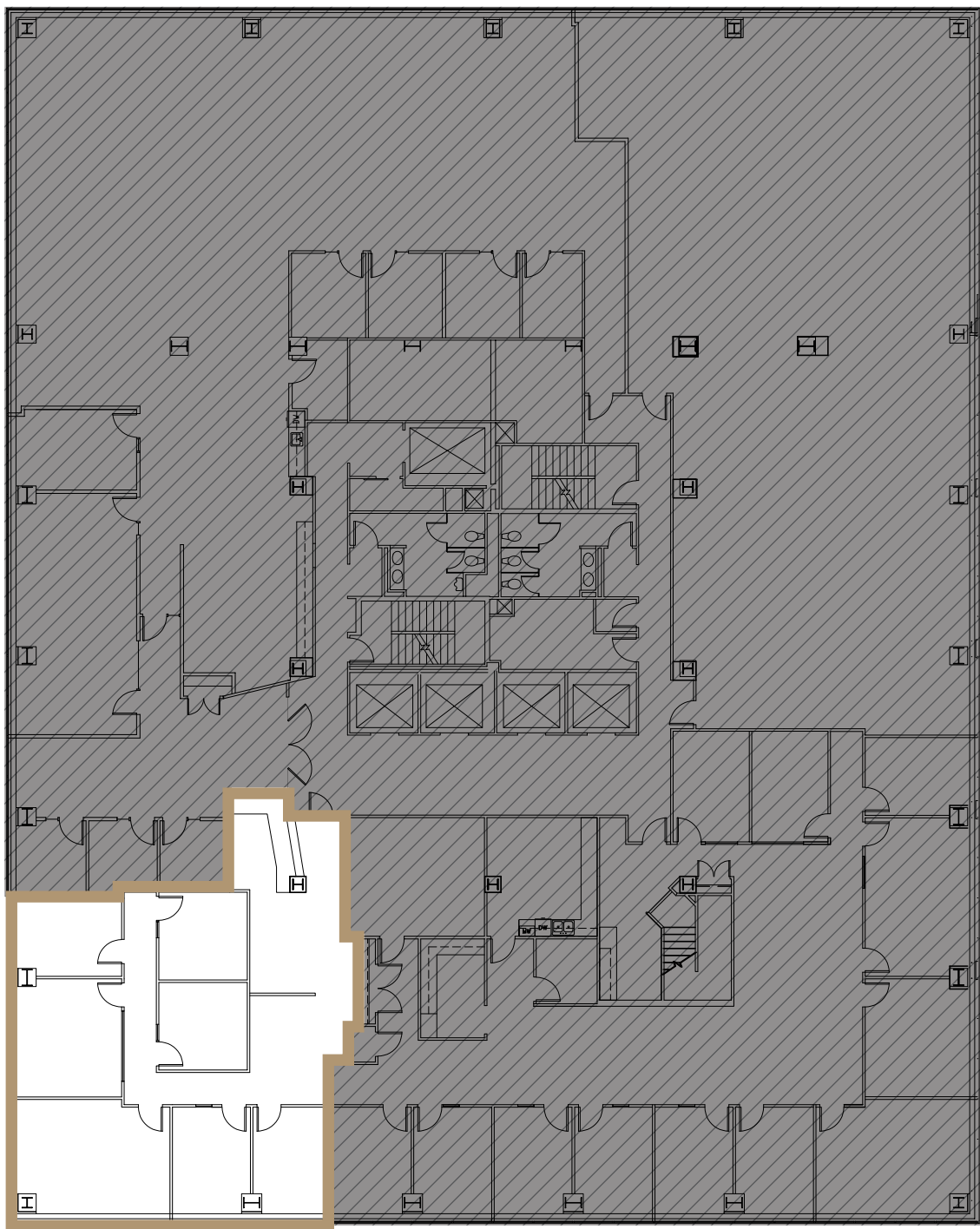






520
PIKE

FLOOR 25 | SUITE 2500
2,208 RSF

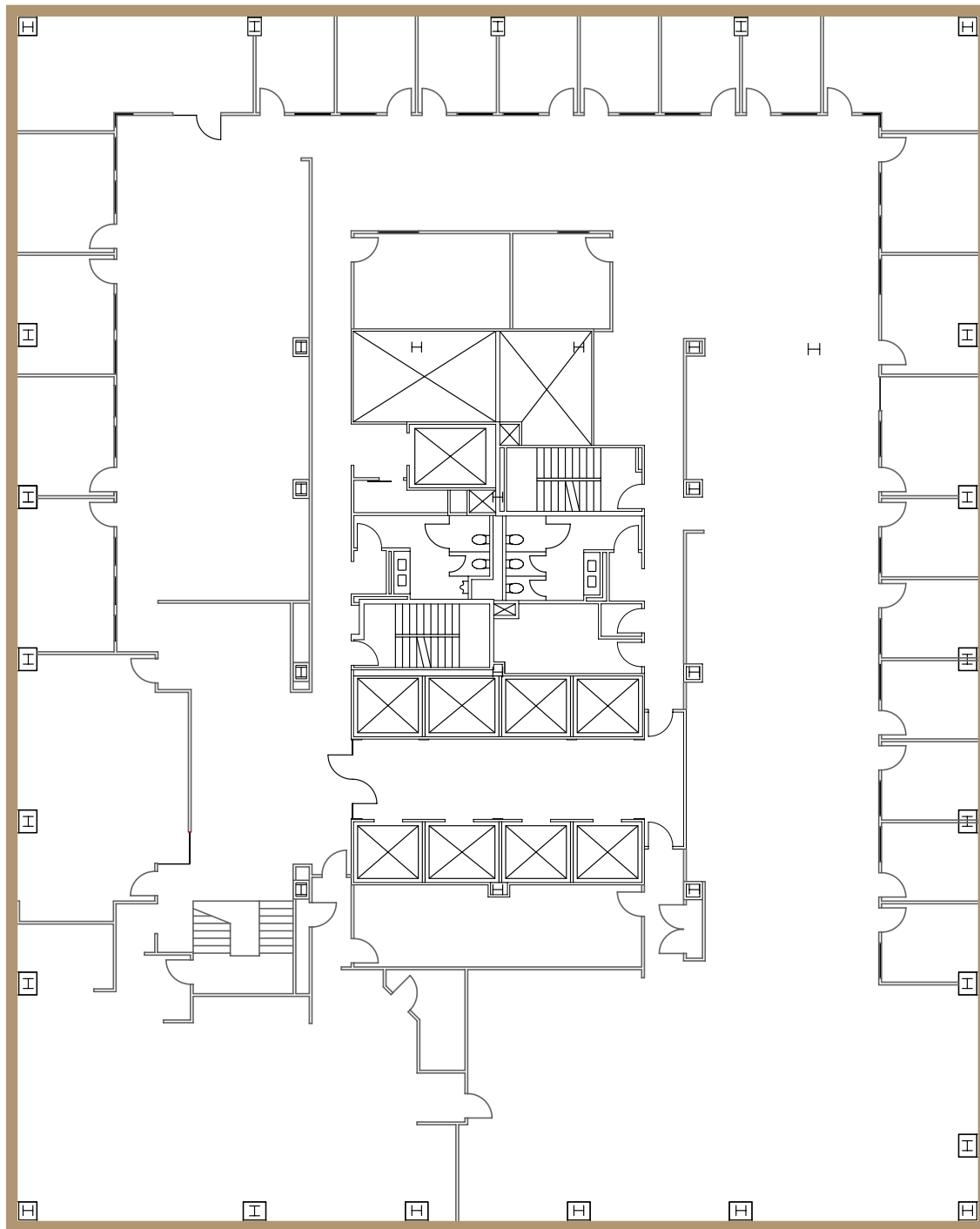


520 PIKE

FLOOR 20 | SUITE 2000

18,218 RSF

[VIEW VIRTUAL TOUR](#)

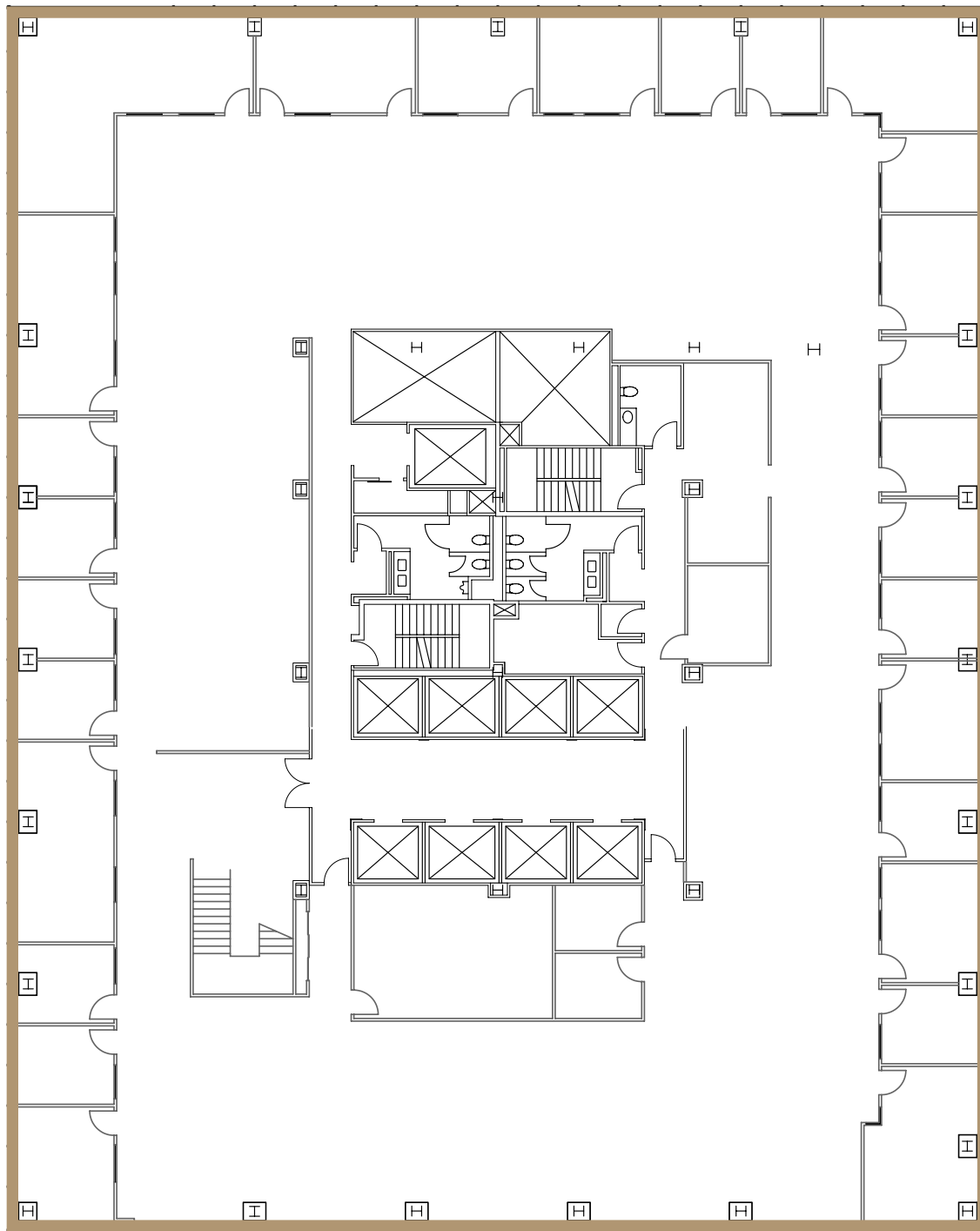


520
PIKE

FLOOR 19 | SUITE 1900

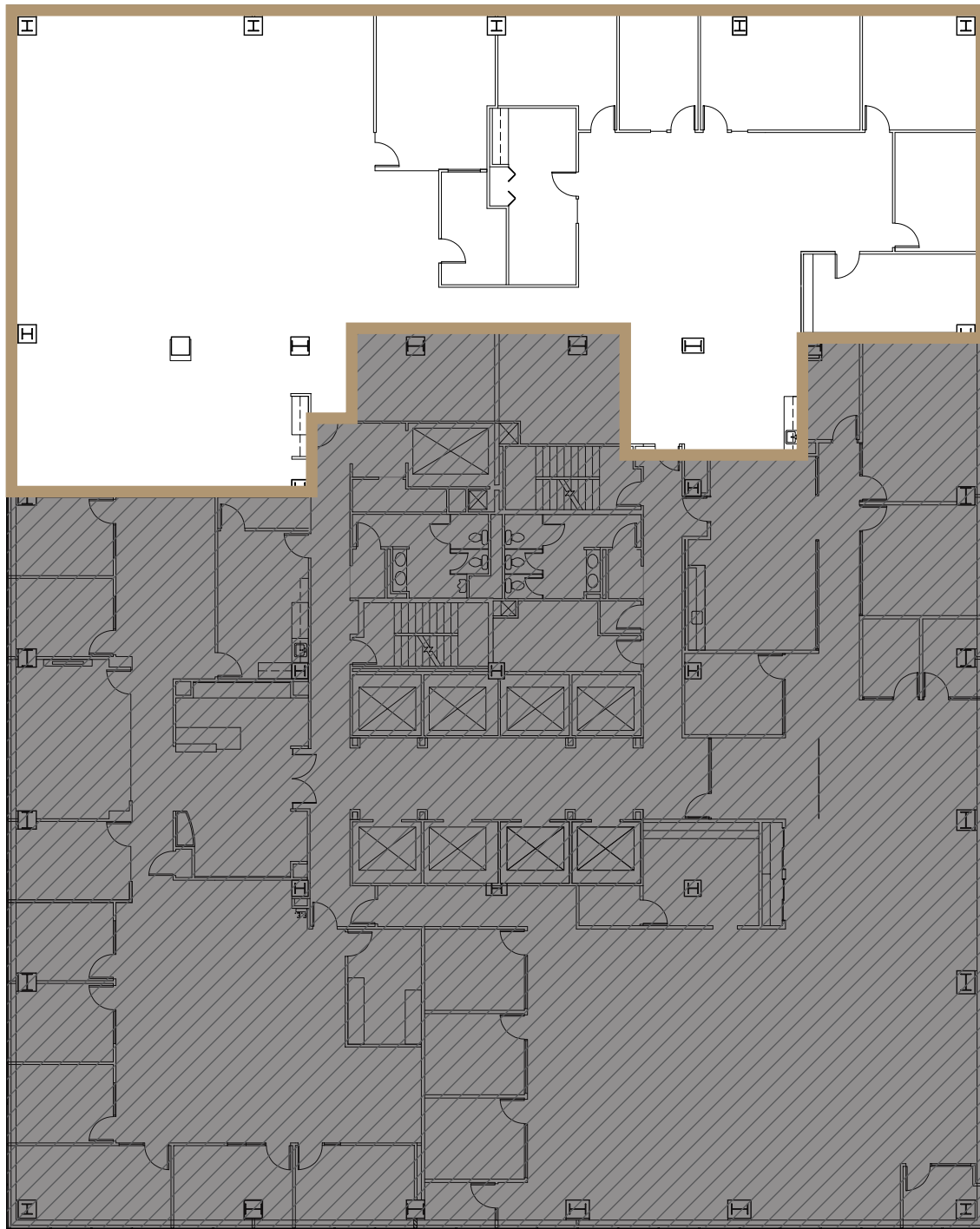
18,183 RSF

[VIEW VIRTUAL TOUR](#)



520 PIKE

FLOOR 14 | SUITE 1420 + 1440
7,154 RSF

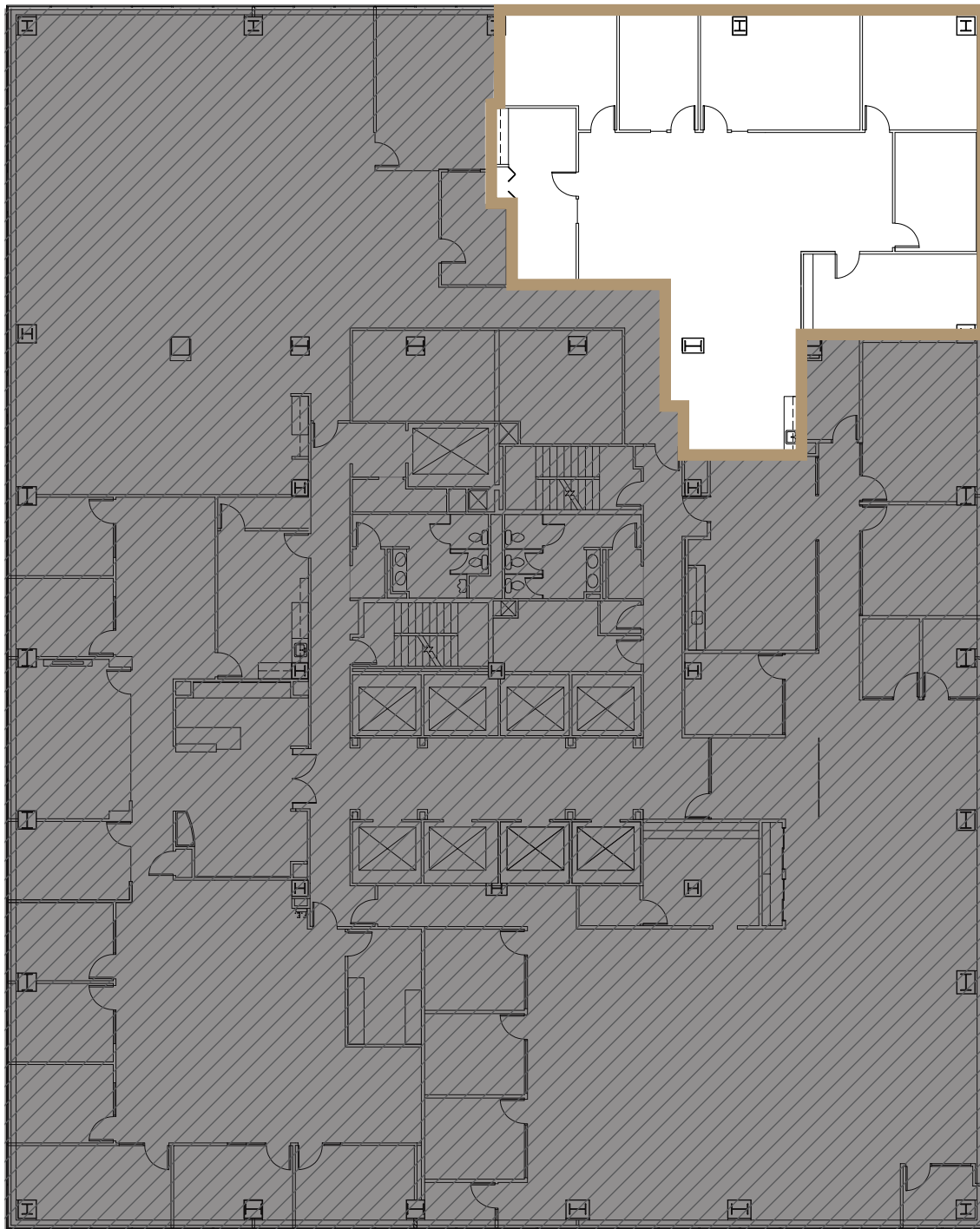


520
PIKE

FLOOR 14 | SUITE 1440

3,285 RSF

VIEW VIRTUAL TOUR

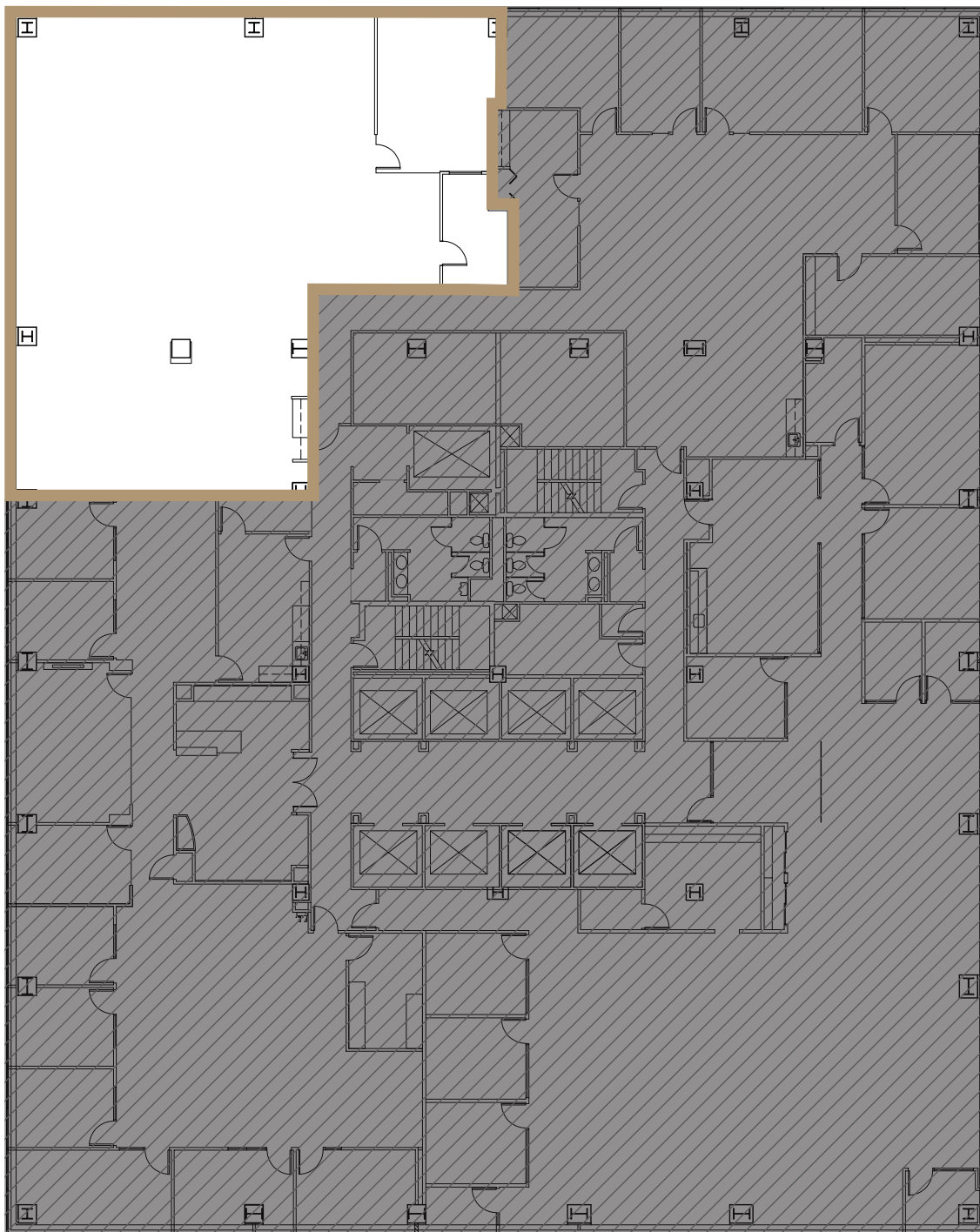


520
PIKE

FLOOR 14 | SUITE 1420

3,870 RSF

VIEW VIRTUAL TOUR

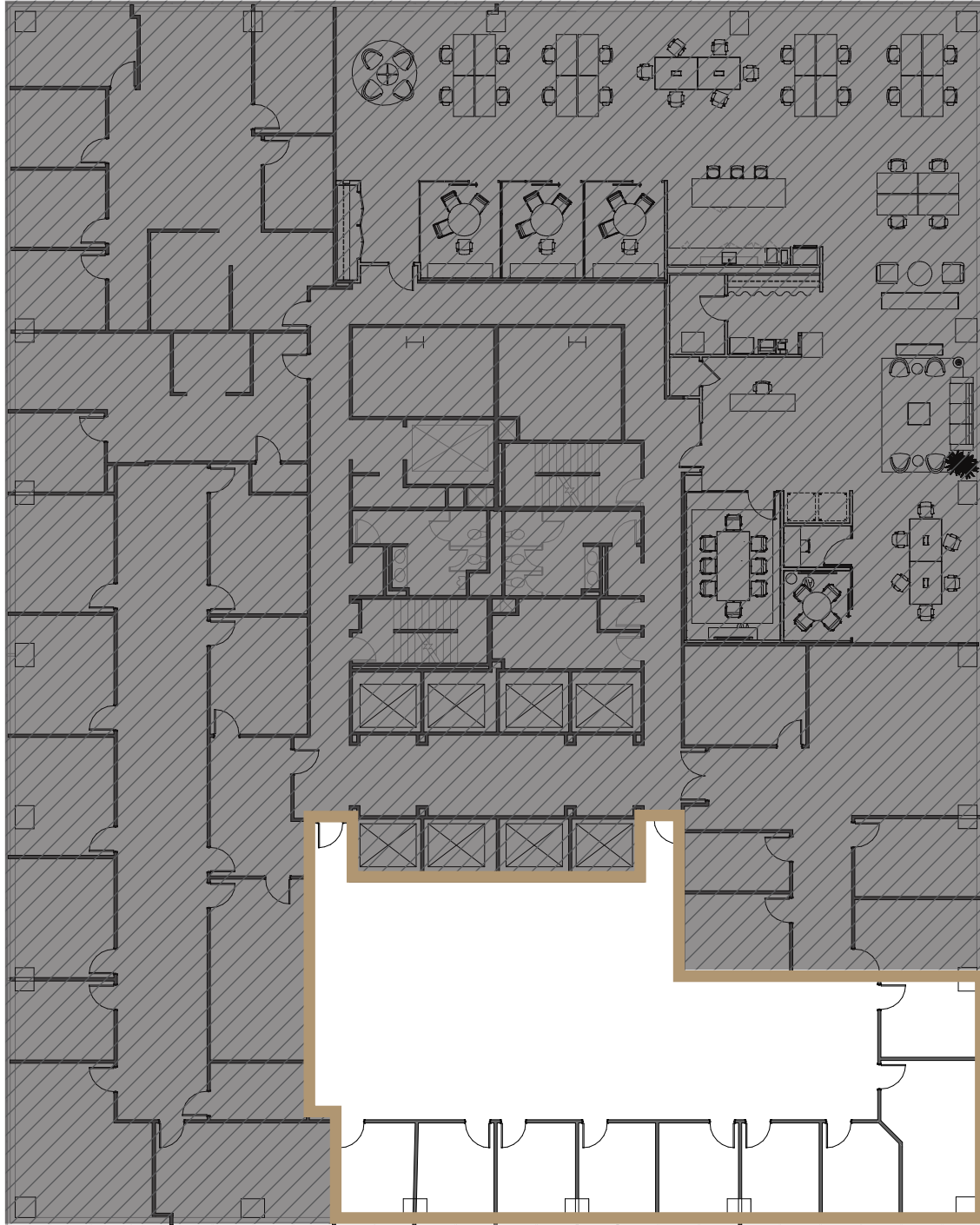


520
PIKE

FLOOR 13 | SUITE 1375

3,708 RSF

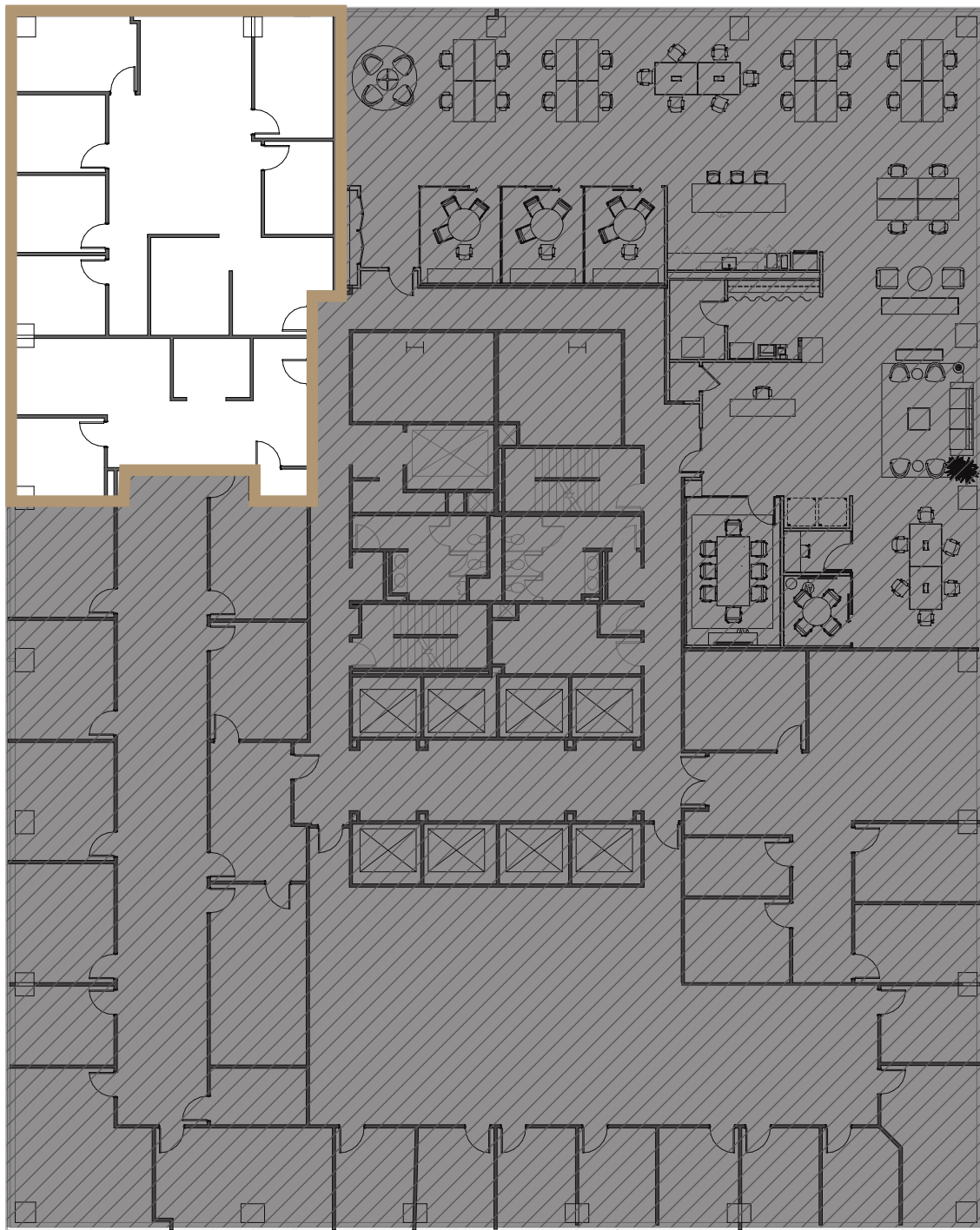
VIEW VIRTUAL TOUR



520 PIKE

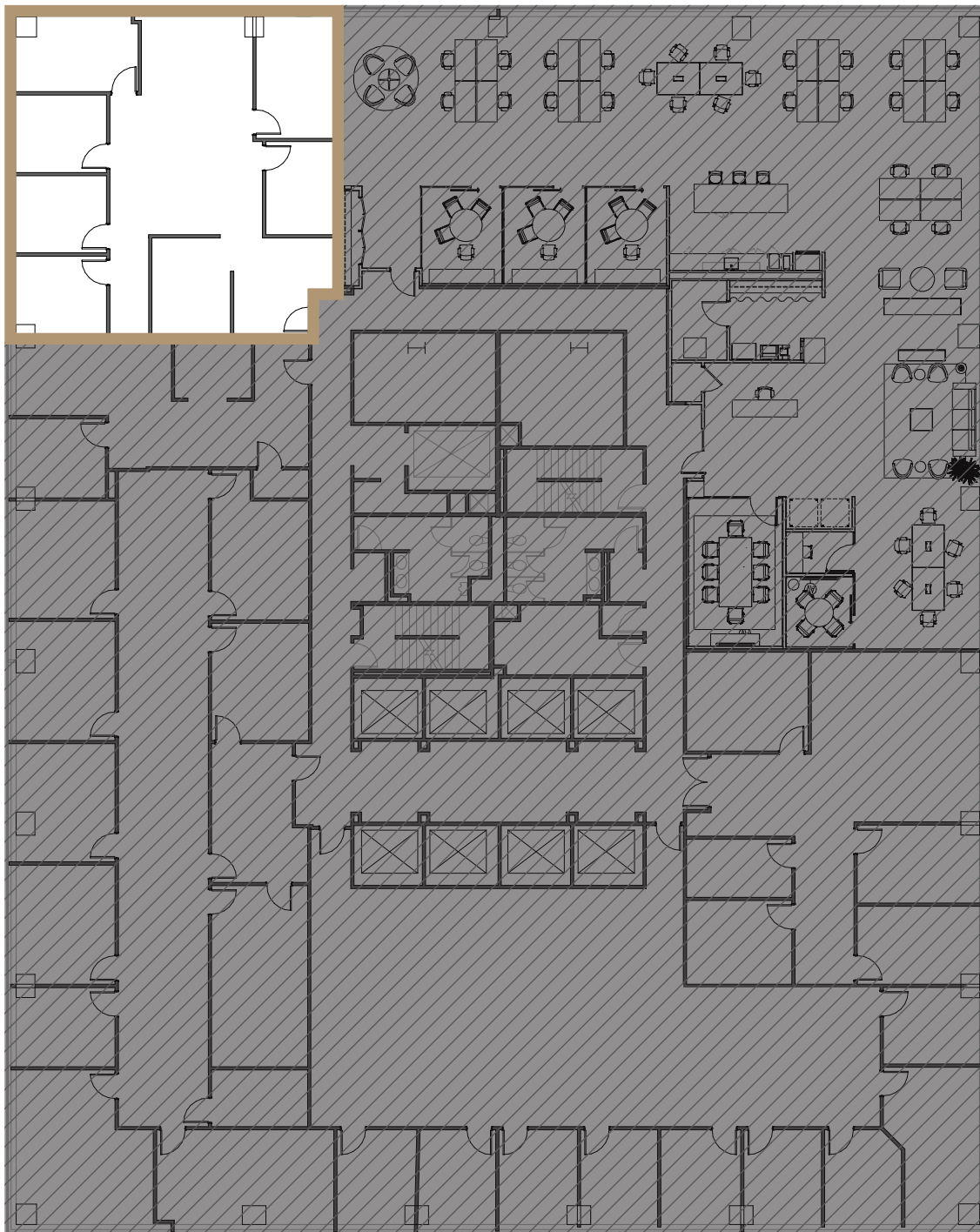
FLOOR 13 | SUITE 1305+1310

2,883 RSF



520 PIKE

FLOOR 13 | SUITE 1310
2,041 RSF

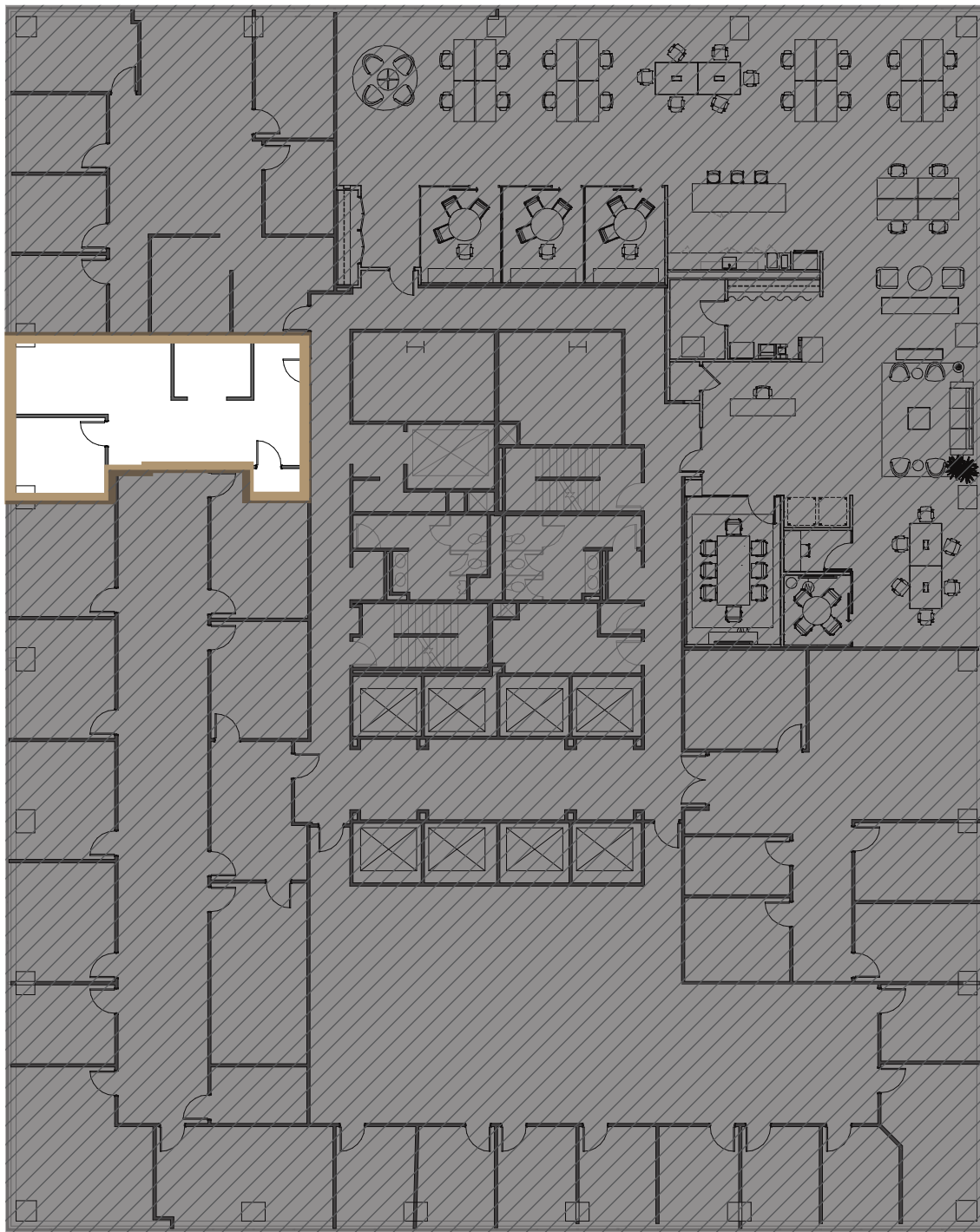


520
PIKE

FLOOR 13 | SUITE 1305

842 RSF

VIEW VIRTUAL TOUR

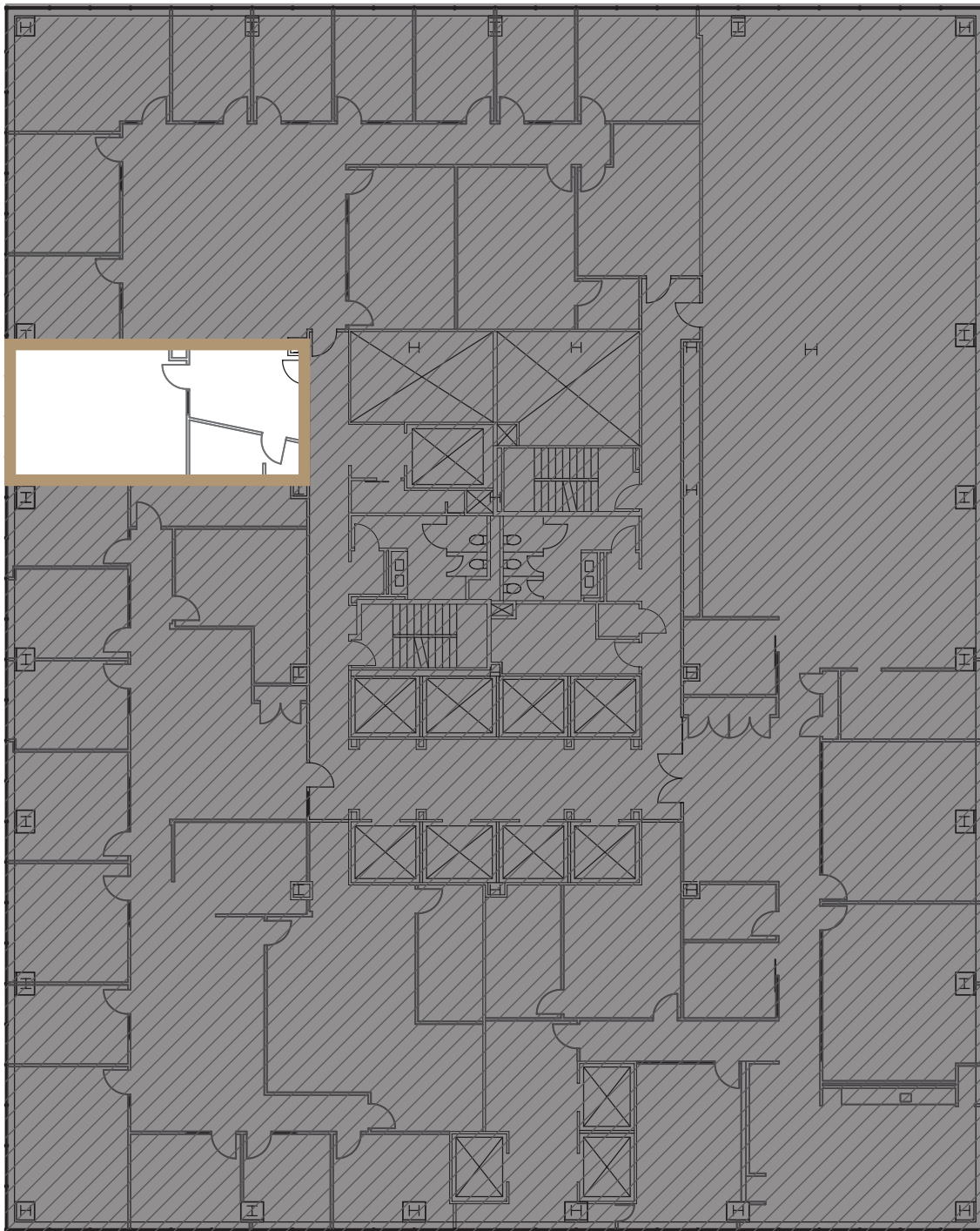


520
PIKE

FLOOR 11 | SUITE 1120

760 RSF

VIEW VIRTUAL TOUR

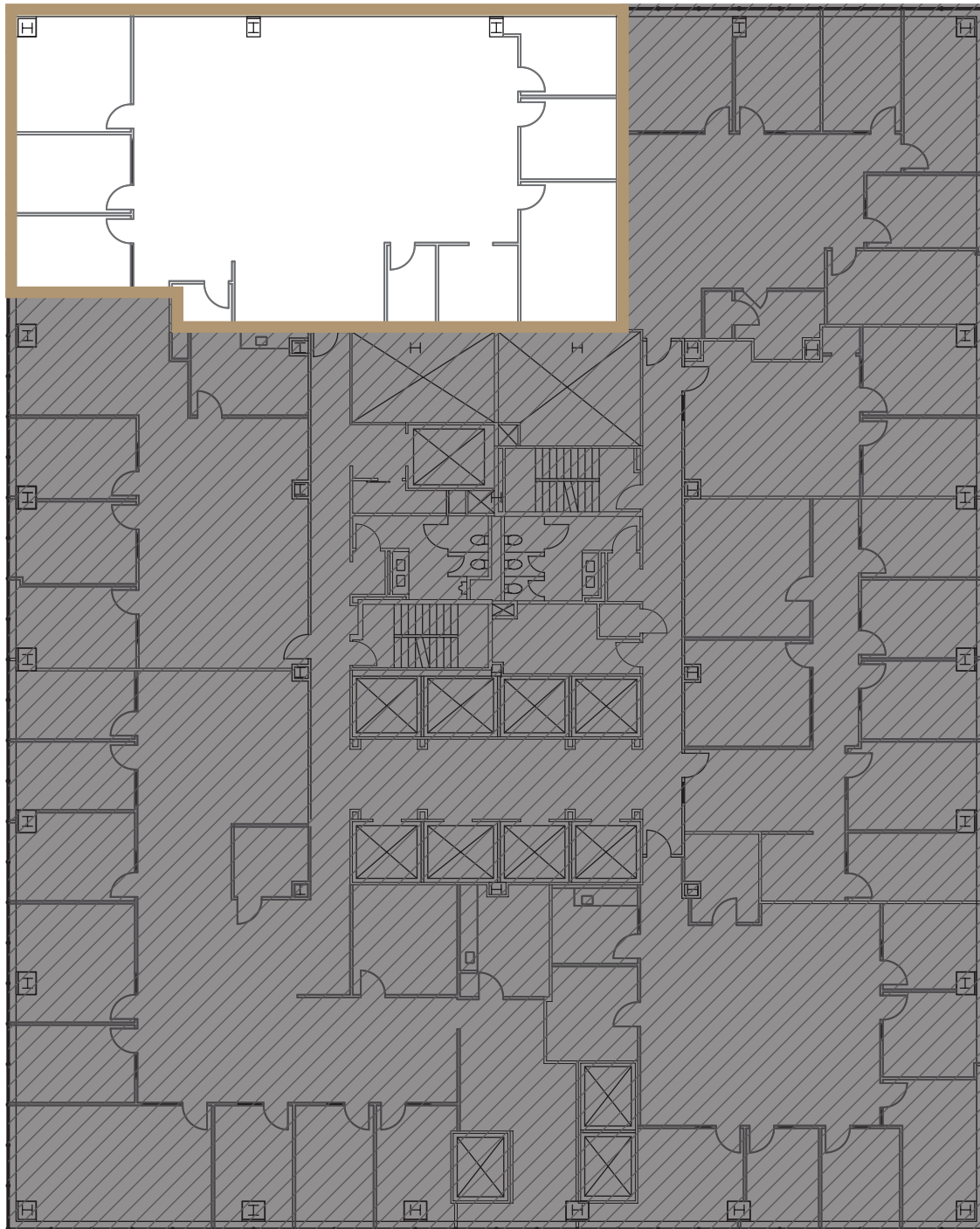


520
PIKE

FLOOR 10 | SUITE 1005

3,528 RSF

[VIEW VIRTUAL TOUR](#)

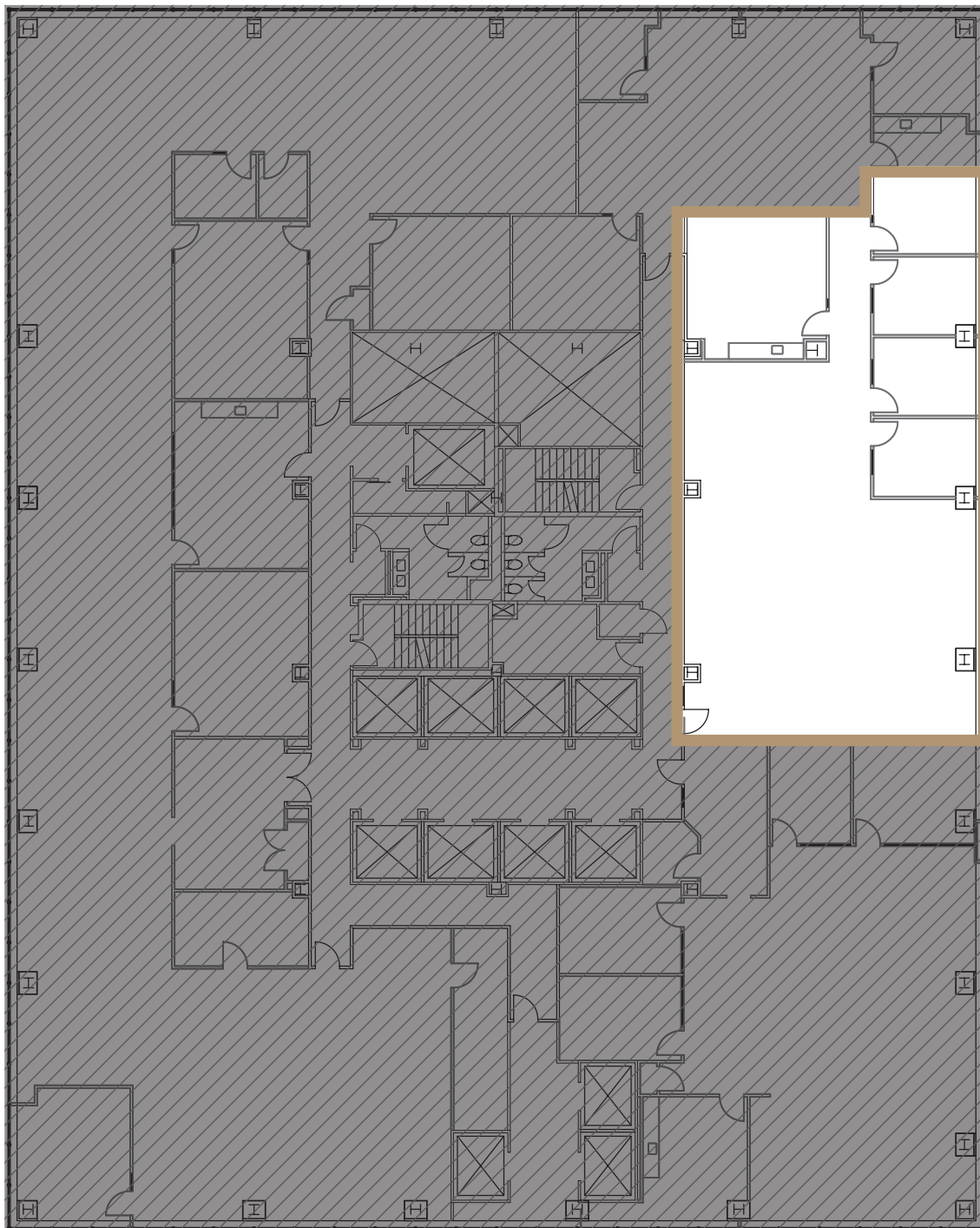


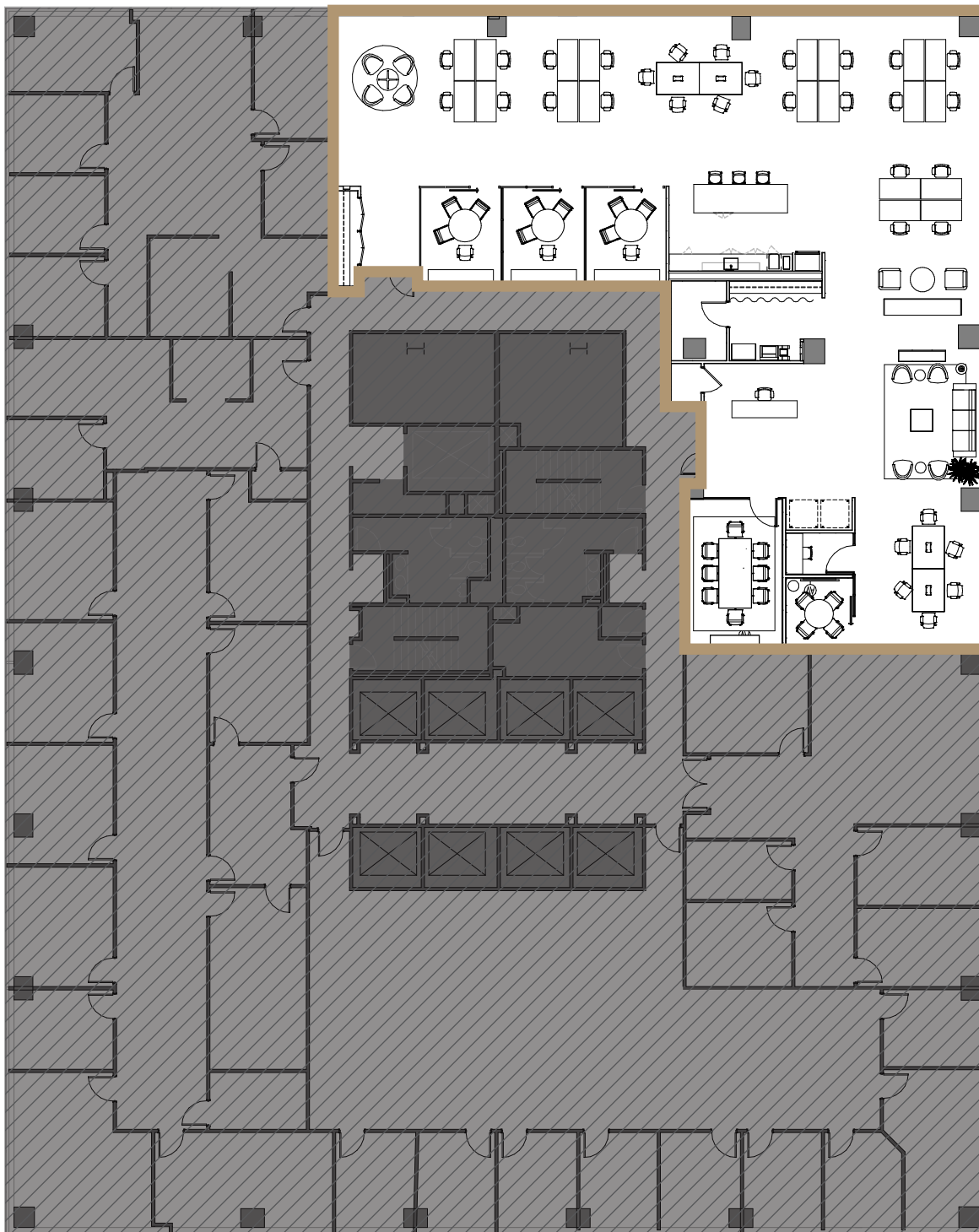
520
PIKE

FLOOR 9 | SUITE 975

3,052 RSF

VIEW VIRTUAL TOUR



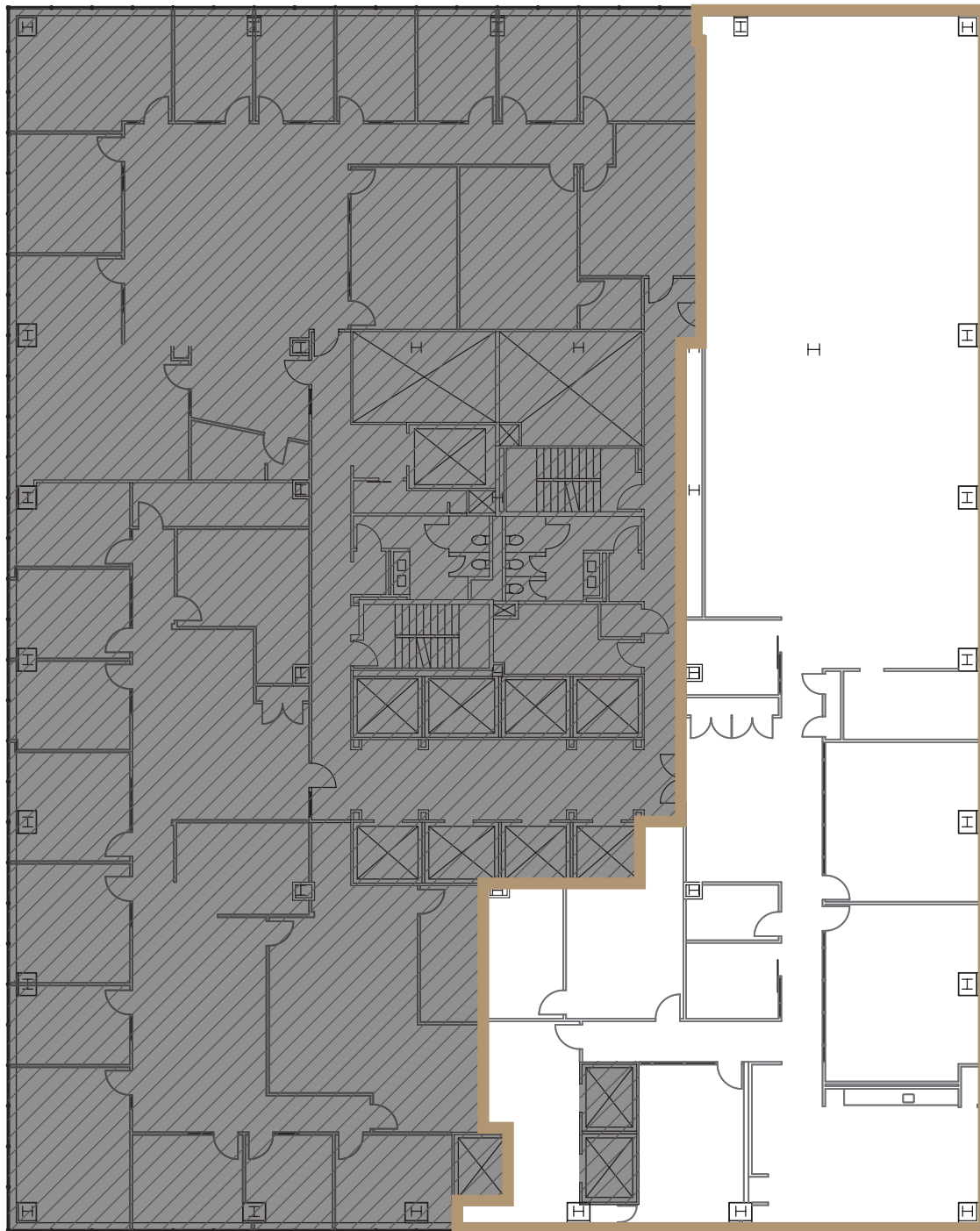


520
PIKE

FLOOR 11 | SUITE 1150

7,798 RSF

VIEW VIRTUAL TOUR

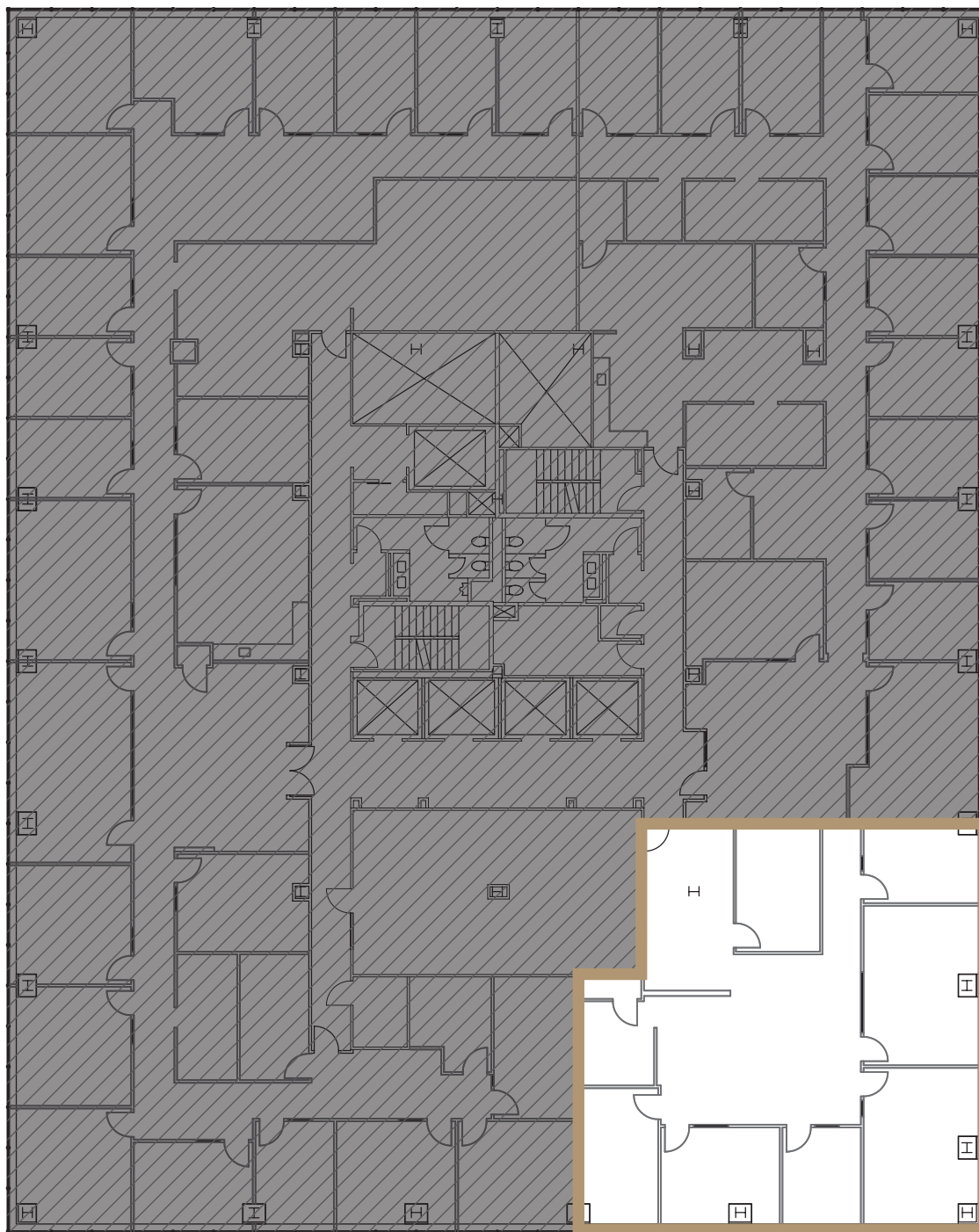


520
PIKE

FLOOR 23 | SUITE 2375

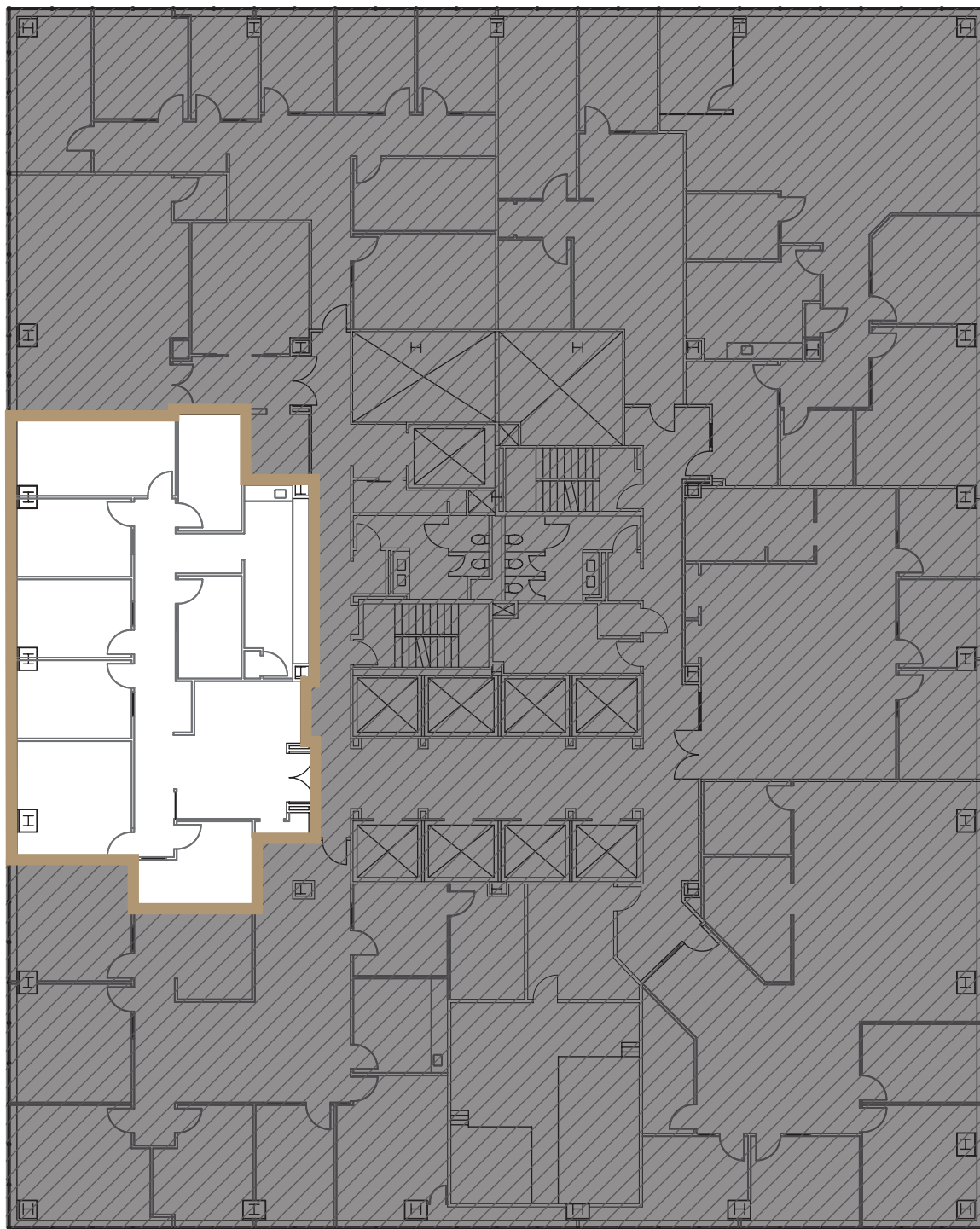
2,840 RSF

VIEW VIRTUAL TOUR



520
PIKE

FLOOR 12 | SUITE 1205
2,443 RSF



520
PIKE

FLOOR 10 | SUITE 1015

908 RSF

VIEW VIRTUAL TOUR

