

11424 GRANDVIEW RD

KANSAS CITY, MO 64137



REECE

COMMERCIAL REAL ESTATE

a Berkshire Hathaway Affiliate



HIGHLIGHTS

- 5,100 SF Religious Facility
- 3+/- Acre Lot
- Sanctuary with 12 Pews Seats up to 120+/-
- 32 Parking Spaces
- Great Opportunity for Growing Church or Day Care
- Close Proximity to 71 & 435
- Near Downtown Grandview

FOR SALE

\$250,000

DEMOGRAPHICS

	1 Mile	3 Mile	5 Mile
2019 POPULATION	5,066	53,868	120,540
2019 AVG HOUSEHOLD INCOME	\$59,121	\$58,935	\$76,716

Connor Sweeney

Office: 913-945-3730

Mobile: 816-217-7352

Email: csweeney@reececommercial.com

The information above has been obtained from sources believed reliable. While we do not doubt its accuracy we have not verified it and make no guarantee, warranty or representation about it. It is your responsibility to independently confirm its accuracy and completeness. Any projections, opinions, assumptions, or estimates used are for example only and do not represent the current or future performance of the property. You and your advisors should conduct a careful, independent investigation of the property to determine to your satisfaction the suitability of the property for your needs.

© 2020

PHOTOS

11424 GRANDVIEW RD, KANSAS CITY, MO 64137



REECE

COMMERCIAL REAL ESTATE

a Berkshire Hathaway Affiliate



Connor Sweeney

Office: 913-945-3730

Mobile: 816-217-7352

Email: csweeney@reececommercial.com

The information above has been obtained from sources believed reliable. While we do not doubt its accuracy we have not verified it and make no guarantee, warranty or representation about it. It is your responsibility to independently confirm its accuracy and completeness. Any projections, opinions, assumptions, or estimates used are for example only and do not represent the current or future performance of the property. You and your advisors should conduct a careful, independent investigation of the property to determine to your satisfaction the suitability of the property for your needs.

© 2020

AERIALS

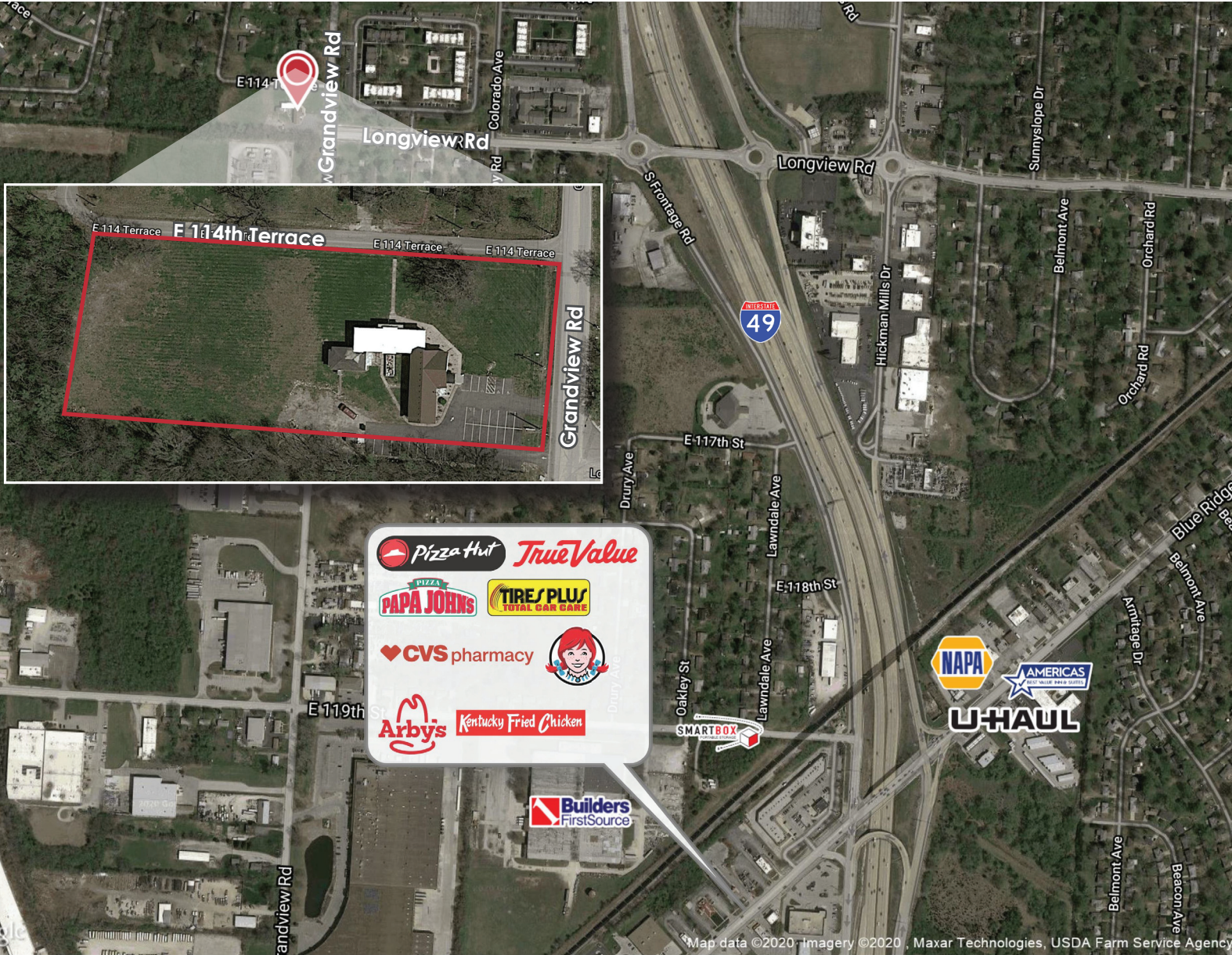
11424 GRANDVIEW RD, KANSAS CITY, MO 64137



REECE

COMMERCIAL REAL ESTATE

a Berkshire Hathaway Affiliate



Map data ©2020, Imagery ©2020, Maxar Technologies, USDA Farm Service Agency

Connor Sweeney

Office: 913-945-3730

Mobile: 816-217-7352

Email: csweeney@reececommercial.com

The information above has been obtained from sources believed reliable. While we do not doubt its accuracy we have not verified it and make no guarantee, warranty or representation about it. It is your responsibility to independently confirm its accuracy and completeness. Any projections, opinions, assumptions, or estimates used are for example only and do not represent the current or future performance of the property. You and your advisors should conduct a careful, independent investigation of the property to determine to your satisfaction the suitability of the property for your needs.
© 2020