



9850 Colerain Avenue, Cincinnati, Ohio 45251

DEMOGRAPHICS

<u>Year 2019</u>	<u>One Mile</u>	<u>Three Mile</u>	<u>Five Mile</u>
Estimated Population	10,796	58,896	153,654
Median Income	\$61,568	\$63,108	\$63,202
Average HH Income	\$72,785	\$77,548	\$77,233
Daytime Population	6,447	19,193	44,311

Avg Daily Traffic Count: 37,000 (2018)

PROPERTY HIGHLIGHTS

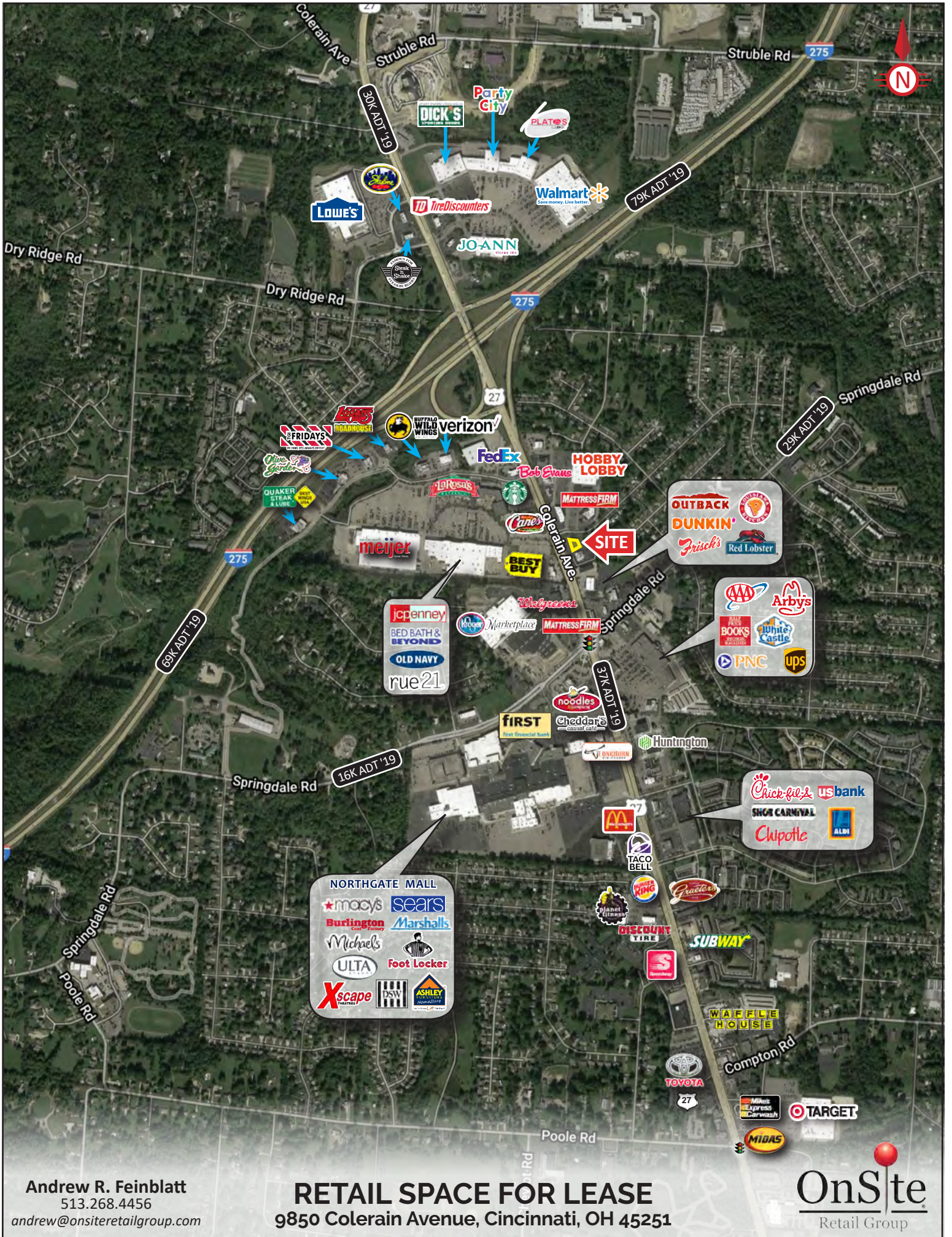
- 1,200 SF (20 Feet x 60 Feet) now Available
- Signalized corner with fantastic visibility and easy access to Colerain and Redskin
- Centrally located in the regional retail trade area and seconds from I-275
- Directly across Colerain from Stone Creek Towne Center, including Meijer, JC Penney, Best Buy, Bed Bath & Beyond, Old Navy, Starbucks, Olive Garden, BWW and many others
- Densely populated with over 10,000 people in one mile



Andrew R. Feinblatt

513.268.4456

andrew@onsiteretailgroup.com



Andrew R. Feinblatt
 513.268.4456
 andrew@onsiteretailgroup.com

RETAIL SPACE FOR LEASE

9850 Colerain Avenue, Cincinnati, OH 45251



The information herein is produced using data from private and government sources deemed to be reliable and is provided without representation or warranty. Logos are for identification purposes only and may be trademarks of their respective companies. © 2020 OnSite Retail Group, LLC All Rights Reserved.



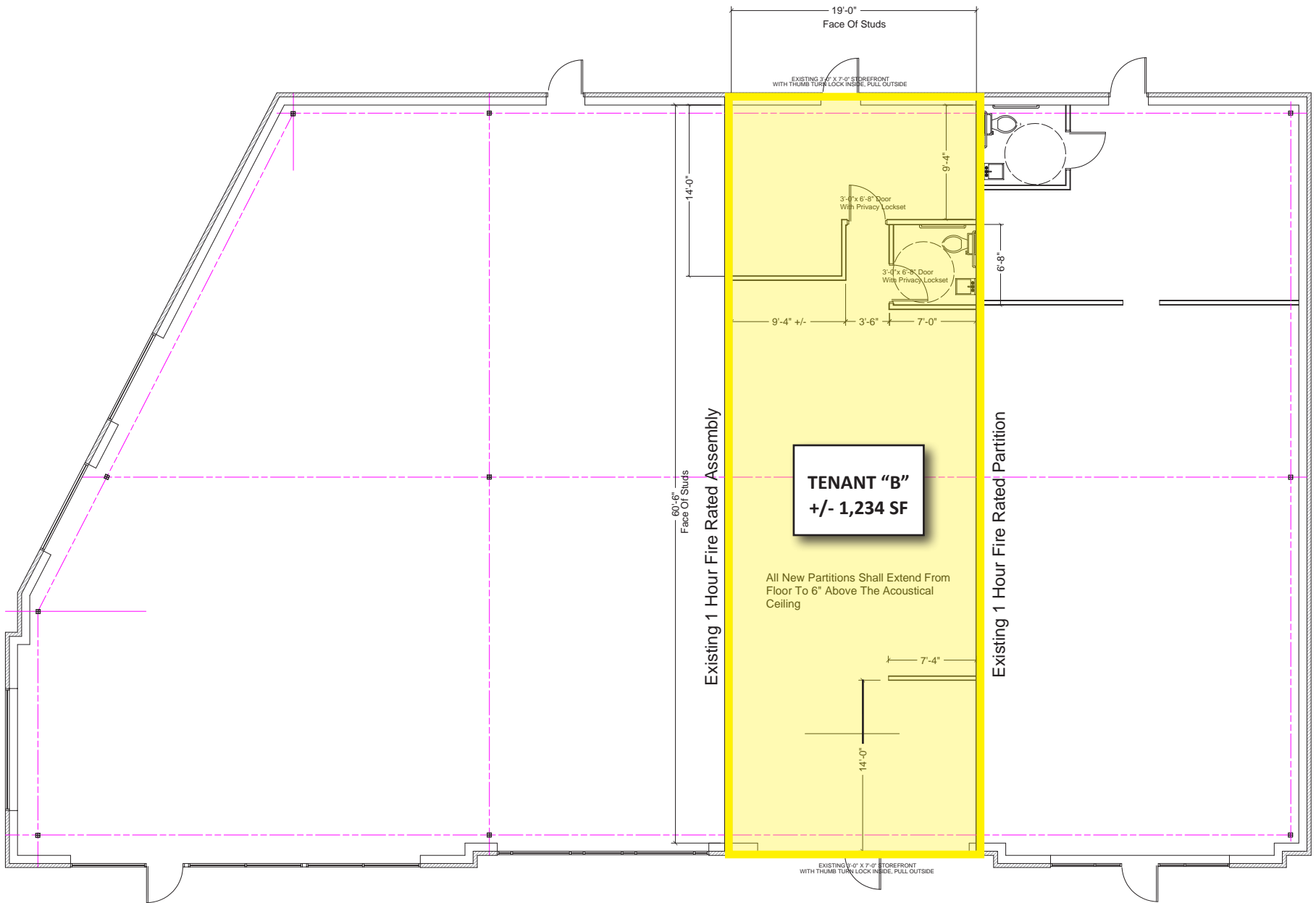
Andrew R. Feinblatt
513.268.4456
andrew@onsiteretailgroup.com

RETAIL SPACE FOR LEASE
9850 Colerain Avenue, Cincinnati, OH 45251

OnSite

Imagery ©2020 Maxar Technologies, Retail Group Survey

The information herein is produced using data from private and government sources deemed to be reliable and is provided without representation or warranty. Logos are for identification purposes only and may be trademarks of their respective companies. © 2020 OnSite Retail Group, LLC All Rights Reserved.



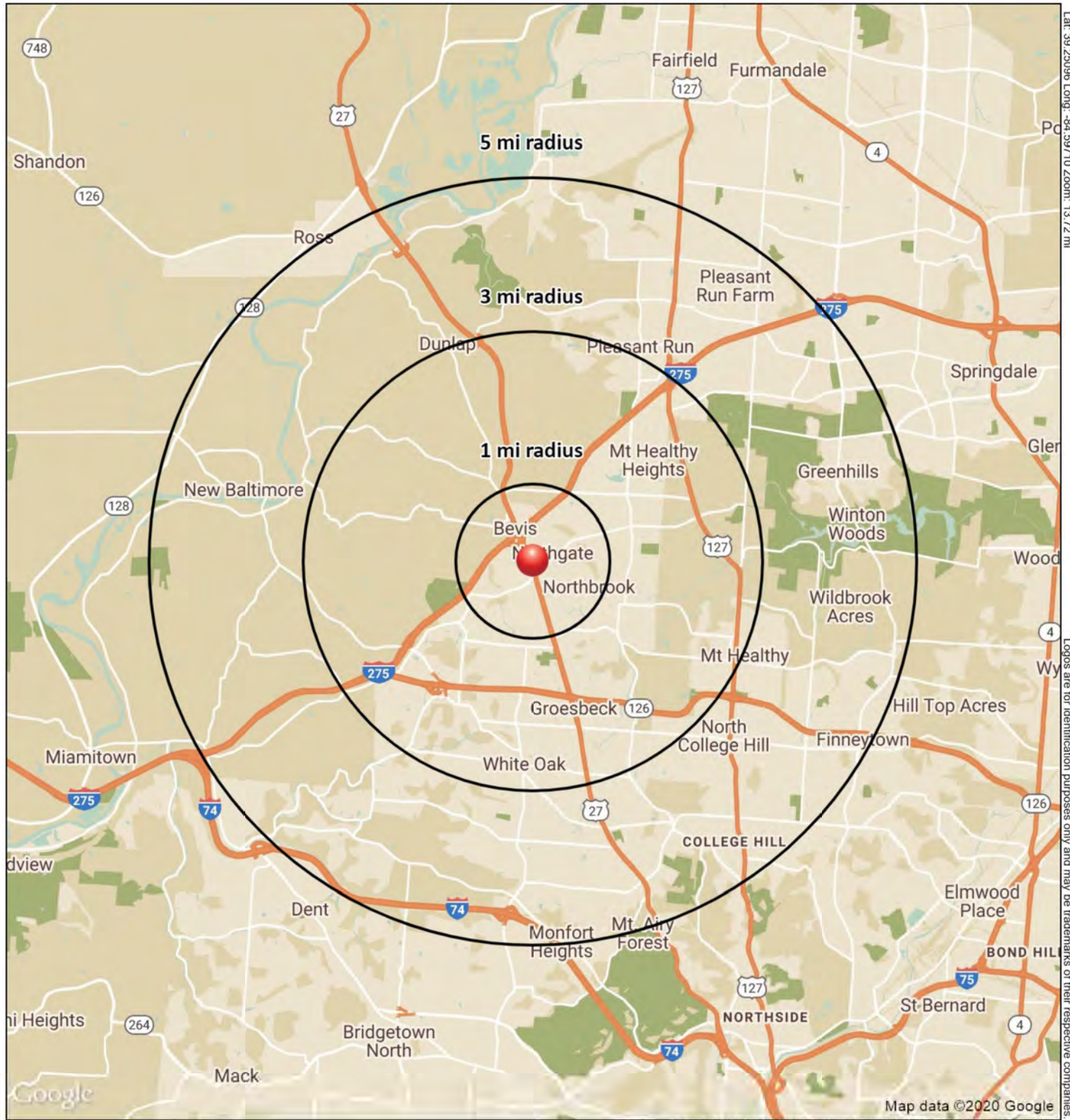
TENANT "B"
+/- 1,234 SF

All New Partitions Shall Extend From Floor To 6" Above The Acoustical Ceiling

Andrew R. Feinblatt
 513.268.4456
 andrew@onsiteretailgroup.com

RETAIL SPACE FOR LEASE
9850 Colerain Avenue, Cincinnati, OH 45251





Lat: 39.25096 Long: -84.59710 Zoom: 13.72 mi
Logos are for identification purposes only and may be trademarks of their respective companies.

9850 Colerain Ave
Cincinnati, OH 45251

January 2020



This map was produced using data from private and government sources deemed to be reliable. The information herein is provided without representation or warranty.

SUMMARY PROFILE

2000-2010 Census, 2019 Estimates with 2024 Projections



Lat/Lon: -84.5971/39.251

RS1

9850 Colerain Ave

Cincinnati, OH 45251

		1 mi radius	3 mi radius	5 mi radius
POPULATION	2019 Estimated Population	10,796	58,896	153,654
	2024 Projected Population	10,544	57,847	152,322
	2010 Census Population	10,758	58,479	152,317
	2000 Census Population	11,445	61,371	158,901
	Projected Annual Growth 2019 to 2024	-0.5%	-0.4%	-0.2%
	Historical Annual Growth 2000 to 2019	-0.3%	-0.2%	-0.2%
	2019 Median Age	37.9	37.7	37.9
HOUSEHOLDS	2019 Estimated Households	4,465	23,982	63,753
	2024 Projected Households	4,338	23,413	62,792
	2010 Census Households	4,252	22,780	60,462
	2000 Census Households	4,403	23,235	61,401
	Projected Annual Growth 2019 to 2024	-0.6%	-0.5%	-0.3%
	Historical Annual Growth 2000 to 2019	-	0.2%	0.2%
RACE AND ETHNICITY	2019 Estimated White	72.5%	69.0%	62.3%
	2019 Estimated Black or African American	20.1%	24.9%	31.7%
	2019 Estimated Asian or Pacific Islander	2.4%	1.8%	1.8%
	2019 Estimated American Indian or Native Alaskan	0.4%	0.3%	0.2%
	2019 Estimated Other Races	4.7%	4.0%	4.0%
	2019 Estimated Hispanic	3.5%	3.0%	2.8%
INCOME	2019 Estimated Average Household Income	\$72,785	\$77,548	\$77,233
	2019 Estimated Median Household Income	\$61,568	\$63,108	\$63,202
	2019 Estimated Per Capita Income	\$30,156	\$31,625	\$32,105
EDUCATION (AGE 25+)	2019 Estimated Elementary (Grade Level 0 to 8)	1.8%	2.8%	2.3%
	2019 Estimated Some High School (Grade Level 9 to 11)	7.1%	6.1%	5.9%
	2019 Estimated High School Graduate	37.4%	34.6%	31.6%
	2019 Estimated Some College	20.0%	21.0%	22.0%
	2019 Estimated Associates Degree Only	9.4%	11.6%	10.3%
	2019 Estimated Bachelors Degree Only	16.7%	15.9%	18.0%
	2019 Estimated Graduate Degree	7.5%	8.0%	10.0%
BUSINESS	2019 Estimated Total Businesses	479	1,541	3,911
	2019 Estimated Total Employees	6,447	19,193	44,311
	2019 Estimated Employee Population per Business	13.5	12.5	11.3
	2019 Estimated Residential Population per Business	22.6	38.2	39.3

This report was produced using data from private and government sources deemed to be reliable. The information herein is provided without representation or warranty.