

2300 PARSONS AVE.

COLUMBUS | OHIO 43207

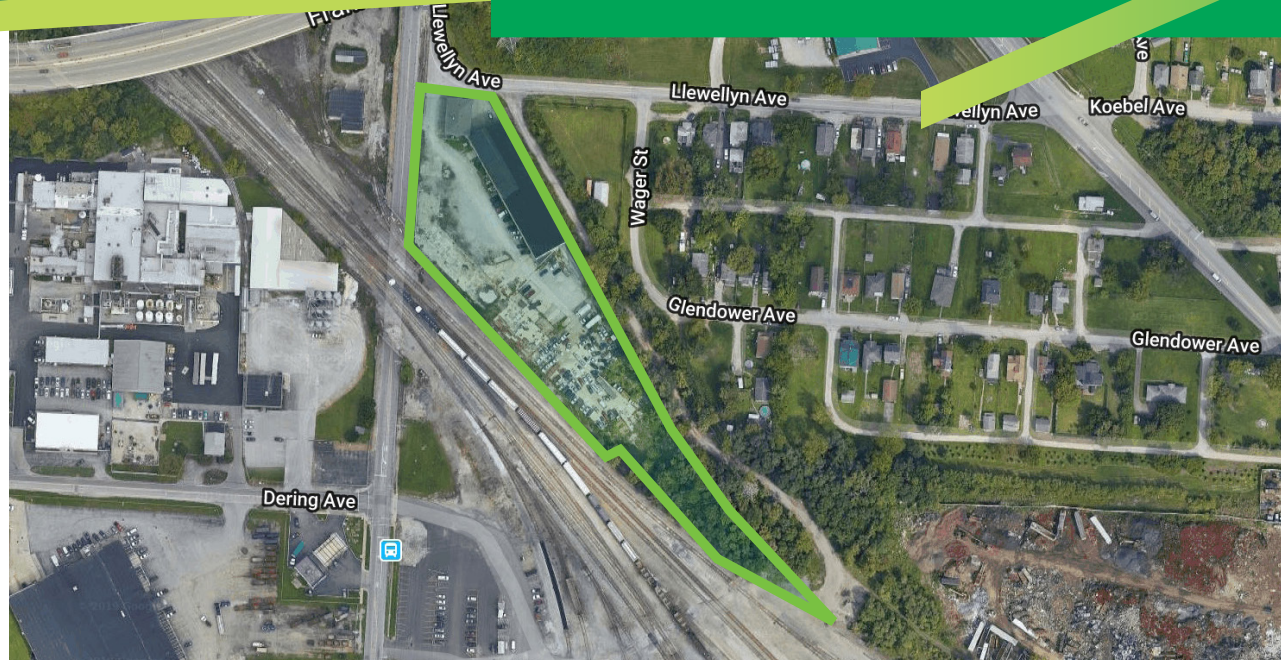
F O R S A L E

17,978 SF INDUSTRIAL BUILDING

2300 Parsons Avenue is located a quarter mile from SR-104 interchange and is situated in an opportunity zone. The site is just south of the Columbus Casting (Buckeye Steel) redevelopment.

This industrial building has a total building area of 17,978± SF with a 15,578± SF freespan warehouse and a 2,400± SF office on a fenced in 3.23± acre lot.

The warehouse has a 26' clear height, three drive in doors, one outside dock, and a five (5) ton crane.



PLEASE CONTACT:

DON ROBERTS

First Vice President
+1 614 430 5021
donald.roberts@cbre.com

SHAD PHIPPS, SIOR, CCIM

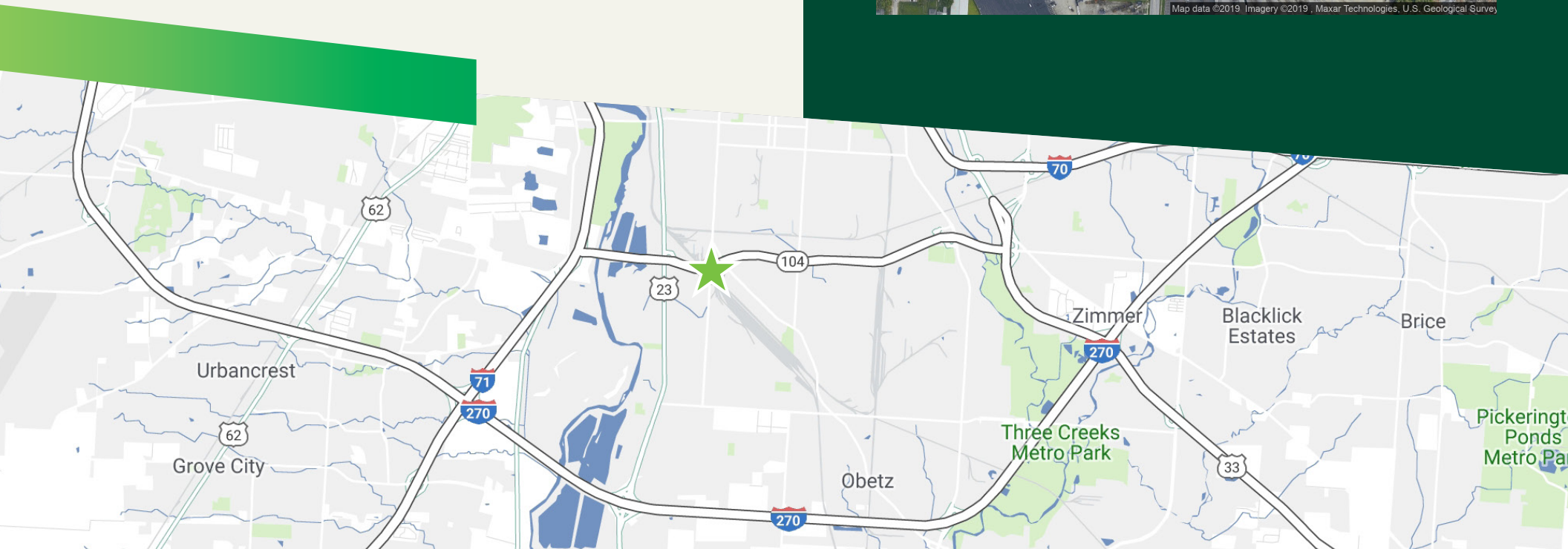
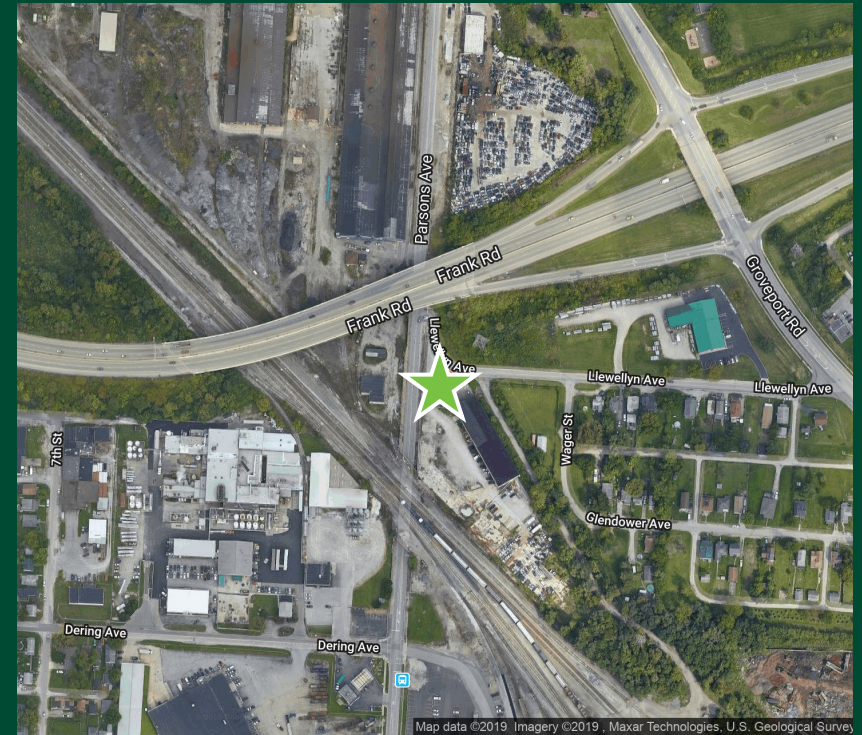
Senior Associate
+1 614 430 5015
shad.phipps@cbre.com

MENDY KALTMANN

Associate
+1 614 430 5056
shad.phipps@cbre.com

2300 PARSONS AVE, COLUMBUS, OH 43207

Property Description	
Building Square Footage	17,978 SF Total 15,578 SF Freespan Warehouse 2,400 SF Office Building
Building Size	64 'x 240' Warehouse 60'x40' Office
Acreage:	3.23 AC Fenced Lot
Zoning	M-Manufacturing
Clear Height	26'
Docks Drive-In Doors	1 Ext Dock 3 Drive-In Doors (Two are 17'w x 22'h)
Floors:	Single-Story Warehouse Two-Story Office
Equipment	Five (5) Ton Crane
Access	Easy access to SR-104 via Lewellyn Ave









PLEASE CONTACT:

DON ROBERTS

First Vice President
+1 614 430 5021
donald.roberts@cbre.com

SHAD PHIPPS, SIOR, CCIM

Senior Associate
+1 614 430 5015
shad.phipps@cbre.com

MENDY KALTMANN

Associate
+1 614 430 5056
shad.phipps@cbre.com

© 2019 CBRE, Inc. All rights reserved. This information has been obtained from sources believed reliable, but has not been verified for accuracy or completeness. You should conduct a careful, independent investigation of the property and verify all information. Any reliance on this information is solely at your own risk. CBRE and the CBRE logo are service marks of CBRE, Inc. All other marks displayed on this document are the property of their respective owners, and the use of such logos does not imply any affiliation with or endorsement of CBRE. Photos herein are the property of their respective owners. Use of these images without the express written consent of the owner is prohibited.