

# REV WHEEL BUSINESS PARK AVAILABLE FOR SALE IN RIVERSIDE, CA

Building 1: ±26,383 SF & Building 2: ±34,363 SF



LOCATED WITHIN THE OPPORTUNITY ZONE & FOREIGN TRADE ZONE (FTZ)



**LEE & ASSOCIATES**  
COMMERCIAL REAL ESTATE SERVICES  
Corp. DRE#: 01048055  
www.lee-associates.com

**FINN COMER**  
DRE#: 00789864 | 951.276.3618  
FCOMER@LEERIVERSIDE.COM

**R. MARIO CALVILLO**  
DRE#: 01911573 | 951.276.3657  
MCALVILLO@LEERIVERSIDE.COM

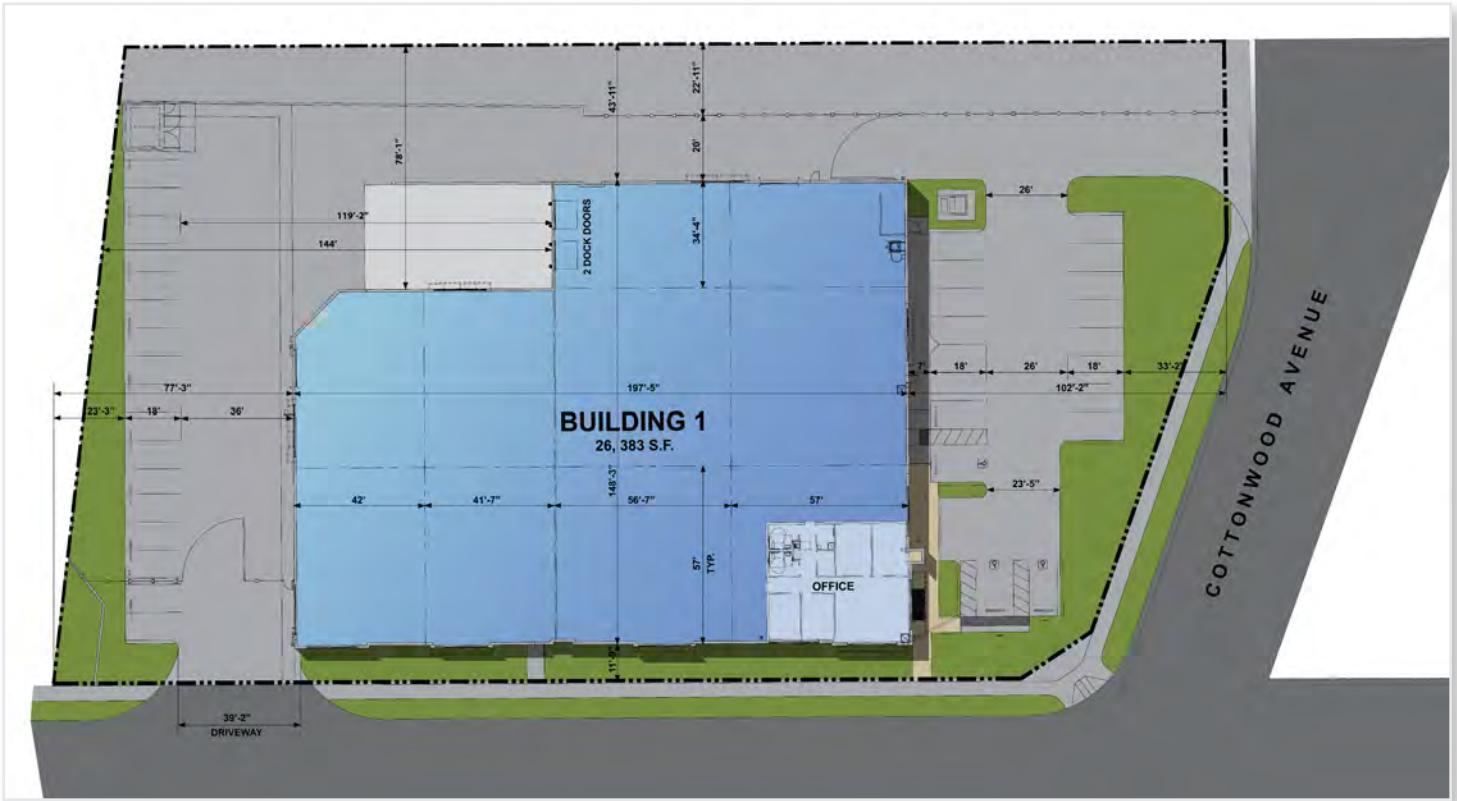
**GARRY JENKINS**  
DRE#: 02008115 | 951.276.3621  
GJENKINS@LEERIVERSIDE.COM

*No warranty or representation has been made to the accuracy of the foregoing information. Terms of sale or lease and availability are subject to change or withdrawal without notice. Lee & Associates Commercial Real Estate Services, Inc. - Riverside.*

# REV WHEEL BUSINESS PARK

## ±26,383 SF AVAILABLE FOR SALE

7025 Old 215 Frontage Road, Riverside, CA 92508



## PROPERTY HIGHLIGHTS

- ±26,383 SF Total
- ±1,768 SF of Office
- 28' Clear Height
- 2 Dock High Doors (9' x 10')
- 2 Ground Level Doors (12' x 14')
- 800 Amps (Expandable Up To 2,000 Amps)
- ESFR Sprinklers
- 35 Auto Parking Stalls
- BMP Zoning
- Riverside Public Utilities
- Secured Private Yard
- Freeway Visibility
- Excellent Access to the 215/60 Interchange

**CLICK FOR:**

[Site Plan](#)

[Video Clip](#)



# REV WHEEL BUSINESS PARK

## ±34,363 SF AVAILABLE FOR SALE

2611 Cottonwood Avenue, Riverside, CA 92501



## PROPERTY HIGHLIGHTS

- ±34,363 SF Total
- ±2,116 SF of 1st Floor Office; ±1,028 SF Mezzanine
- 28' Clear Height
- 4 Dock High Doors (9' x 10')
- 1 Ground Level Door (12' x 14')
- 800 Amps (Expandable Up To 2,000 Amps)
- ESFR Sprinklers
- 45 Auto Parking Stalls
- BMP Zoning
- Riverside Public Utilities
- Secured Private Yard
- Excellent Access to the 215/60 Interchange
- Freeway Frontage

CLICK FOR:

Site Plan

Video Clip



# REV WHEEL BUSINESS PARK AVAILABLE FOR SALE IN RIVERSIDE, CA

Building 1: ±26,383 SF & Building 2: ±34,363 SF

## CORPORATE NEIGHBORS

- 1 Big 5
- 2 Gidden
- 3 Amazon
- 4 Ralphs
- 5 Ross
- 6 Pepsi
- 7 Smart & Final
- 8 World kitchen
- 9 Ascena
- 10 La Salle Bristol

