

AVAILABLE SPRING 2020

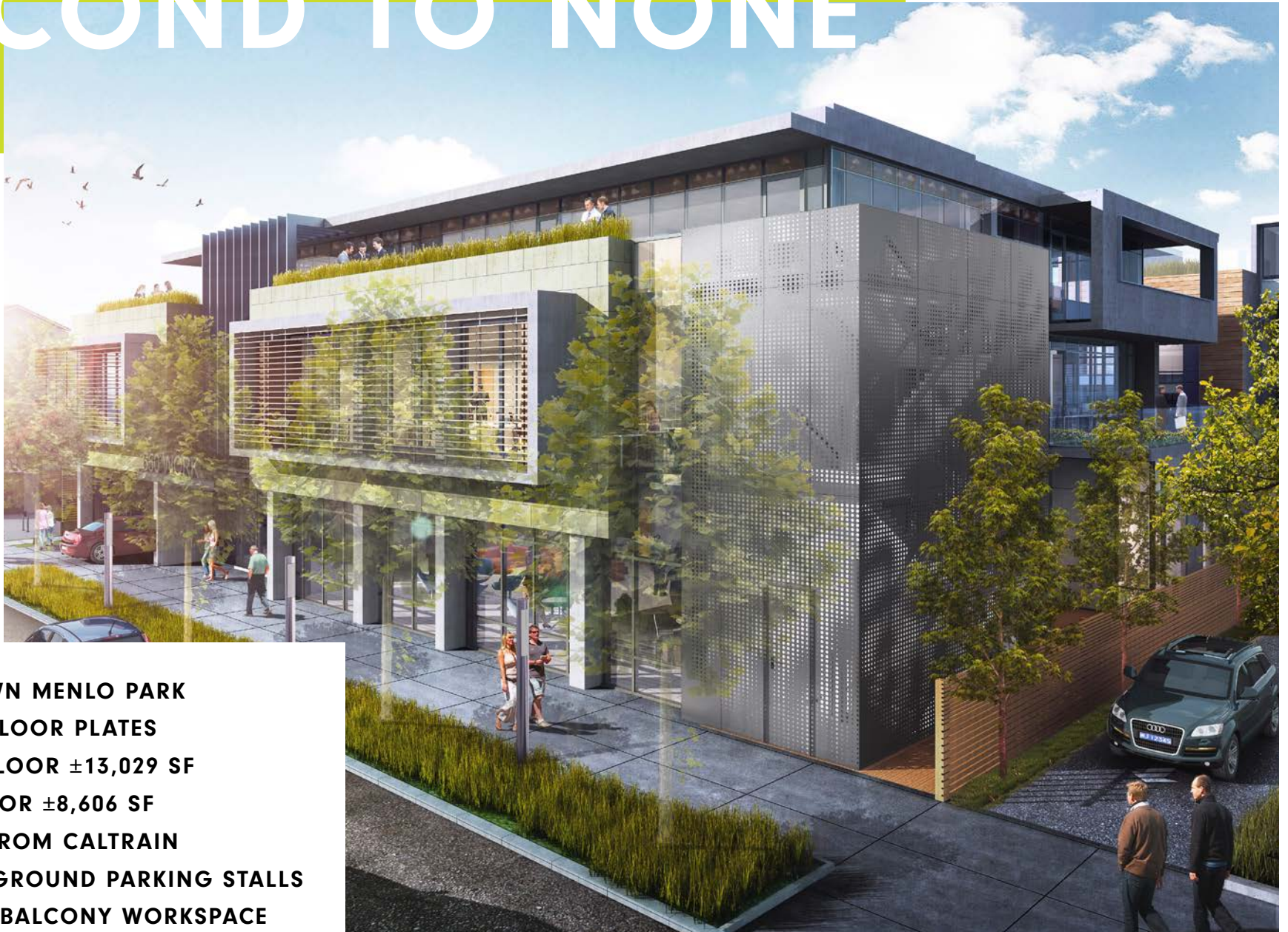
SIX 50 MIL

DWNTWN 650 LIVE OAK
MENLO PARK



FIRST TO MARKET, SECOND TO NONE

±21,635 SF
CLASS A+ OFFICE



- DOWNTOWN MENLO PARK
- FLEXIBLE FLOOR PLATES
- SECOND FLOOR ±13,029 SF
- THIRD FLOOR ±8,606 SF
- 1 BLOCK FROM CALTRAIN
- 83 UNDERGROUND PARKING STALLS
- AMAZING BALCONY WORKSPACE



SIX 50 LIVE

THE BOLD NEW LOOK FOR MENLO PARK

With its modern design, soaring ceilings, and California inspired indoor-outdoor environments, SIX50LIVE is styled for the whole team.

CALIFORNIA - INSPIRED WORKSPACE



EFFICIENT OUTDOOR ENVIRONMENTS BUILT FOR WORK, COLLABORATION + PLAY
OPERABLE WINDOWS + WALLS FOR FRESH AIR
PANORAMIC VIEWS OF SILICON VALLEY

SIXE 50LIVE



SUBURBAN LATITUDE URBAN ATTITUDE

LIVING GREEN WALLS
SUSTAINABLE MATERIALS
BRILLIANT GLASS

LEED GOLD
SOLAR PV READY
BIKE STORAGE

ELECTRIC VEHICLE CHARGING
COMMUNITY PARK
ENTERTAINING AREAS

SIX
50
LIVE

DOWNTOWN
MENLO PARK

EL CAMINO REAL

←
SAN JOSE
±35 MIN VIA BULLET



→
SAN FRANCISCO
±37 MIN VIA BULLET

MENLO PARK STATION

SIX
50
LIVE

ARRIVE IN
ANY STYLE

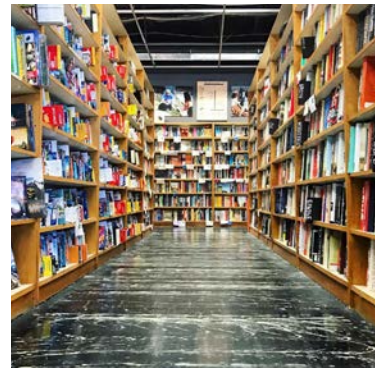


HELLO MENLO PARK

BBC
PARK JAMES
CAMPER
MADMOSIELLE COLETTE
COFFEEBAR
KEPLERS
BORONE
AMICIS
MAMA COCO
THE GUILD THEATRE
KEPLERS BOOKS
TRADER JOES
SAFEWAY
DRAEGERS
PEETS
STARBUCKS
COLD STONE
POSH BAGEL

+MORE

STANFORD MALL 1.25 MILES
PALO ALTO 1.3 MILES
REDWOOD CITY 4 MILES



SILICON VALLEY - AT YOUR DOORSTEP



PALO ALTO

STANFORD

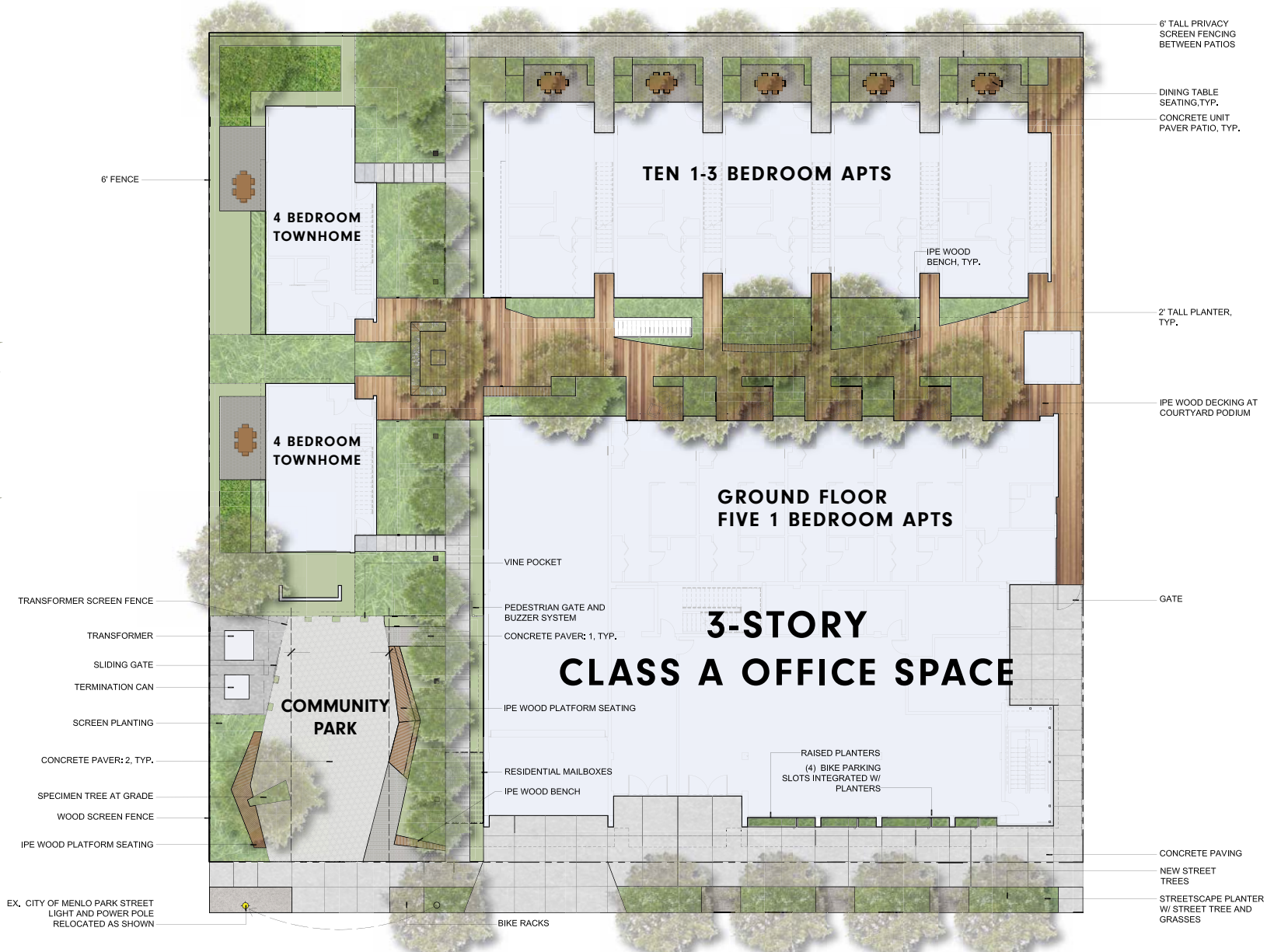
CALTRAIN
STATION

DOWNTOWN
MENLO PARK

SIXE
50LIVE



SITEPLAN



FLOORPLANS

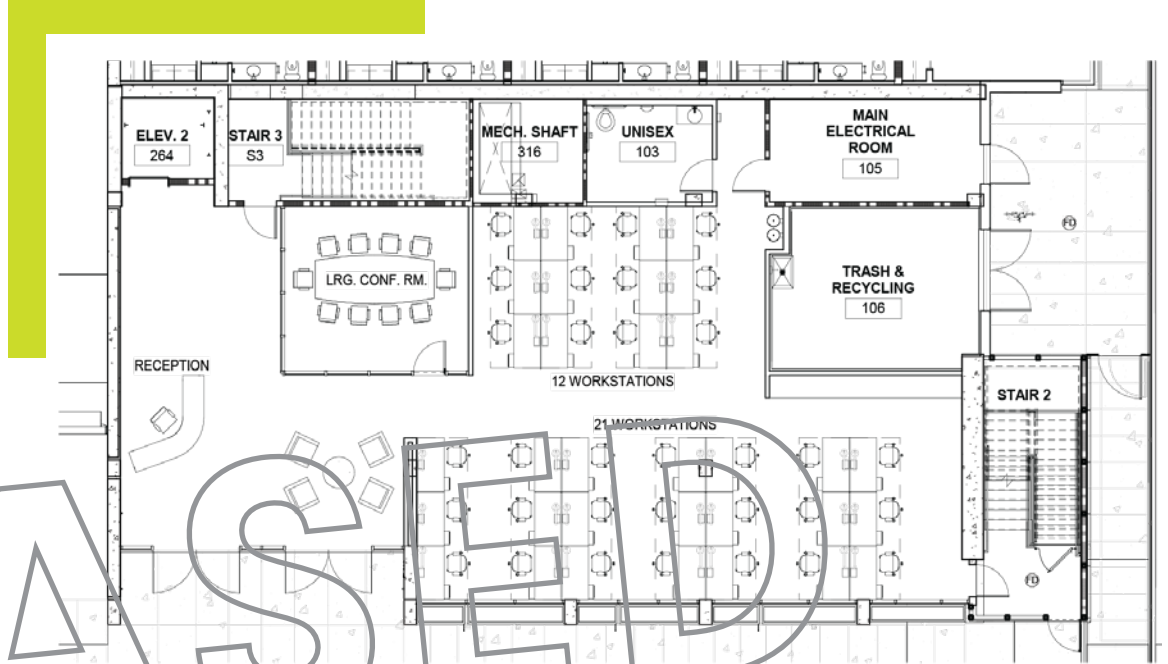


THE SPACE FOR SUCCESS

FLOOR ONE

±3,784 SF — LEASED

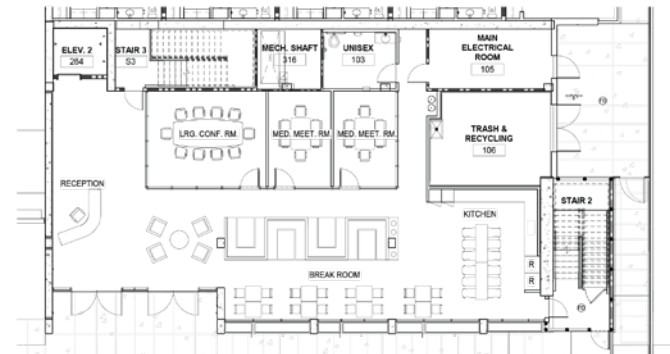
33 WORKSTATIONS
1 CONFERENCE ROOM
RECEPTION AREA



FLOORPLANS



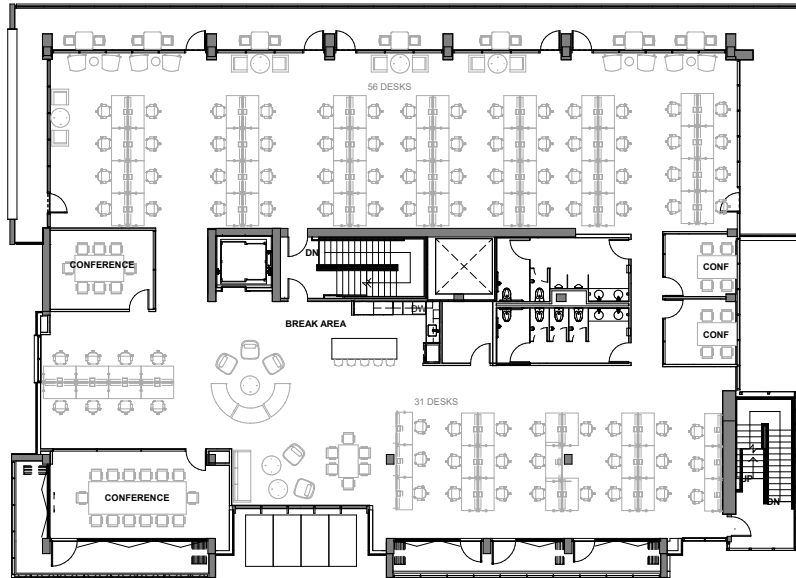
BREAK ROOM



FLOOR TWO

±13,029 SF

TURNKEY TECH TI
READY FOR APRIL OCCUPANCY



87 WORKSTATIONS
4 CONFERENCE ROOMS
1 KITCHEN + LOUNGE
FLEXIBLE BREAK AREAS

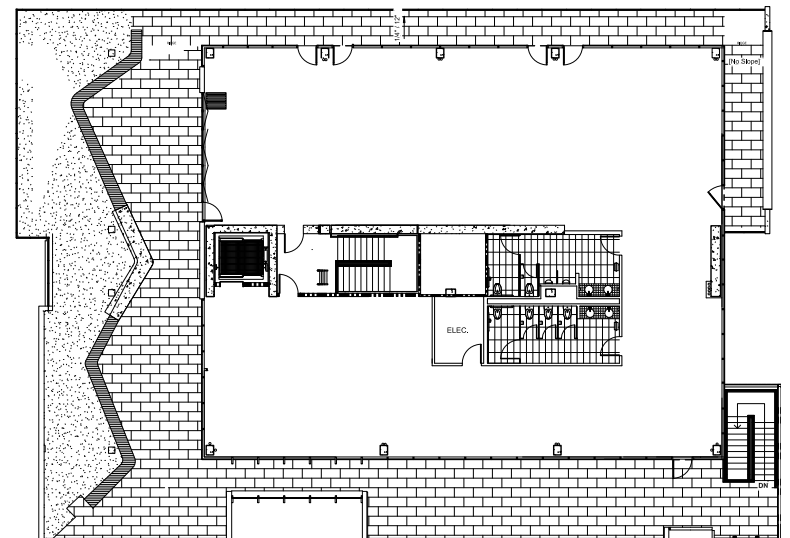
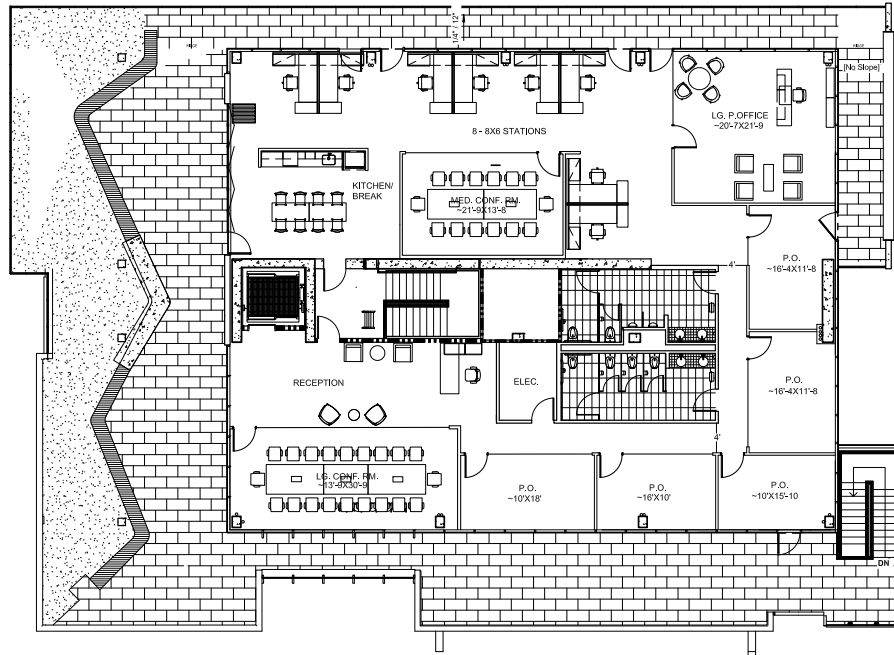
FLOORPLANS



FLOOR THREE

±8,606 SF

HYPOTHETICAL FLOOR LAYOUT



FLOORPLANS

DWNTWN LUXURY LIVING

SIX
50
LIVE



**1-4 BEDROOM APARTMENT HOMES
AVAILABLE SPRING 2020**

AVAILABLE SPRING 2020

**SIX
50
LIVE**

SIX50LIVE.COM

TOUR THE LATEST IN MENLO PARK

DEVELOPMENT
THE MINKOFF GROUP

ARCHITECT
BRICK



DAVID HIEBERT LIC #01189320
VICE CHAIRMAN
650.320.0250
DAVID.HIEBERT@CUSHWAKE.COM

DAN PERSYN LIC #01184798
EXECUTIVE MANAGING DIRECTOR
650.320.0255
DAN.PERSYN@CUSHWAKE.COM

DAVID DOVE LIC #01035766
DIRECTOR
650.320.0212
DAVID.DOVE@CUSHWAKE.COM