

±122.03 ACRES FOR SALE

EXCLUSIVE LISTING | SEC CURRY ROAD AND HOUSER ROAD, ELOY, ARIZONA

LOCATION Property is located at the SEC of Curry Road and Houser Road in Eloy, Arizona.

SIZE ±122.03 acres

ASKING PRICE \$1.00 per square foot

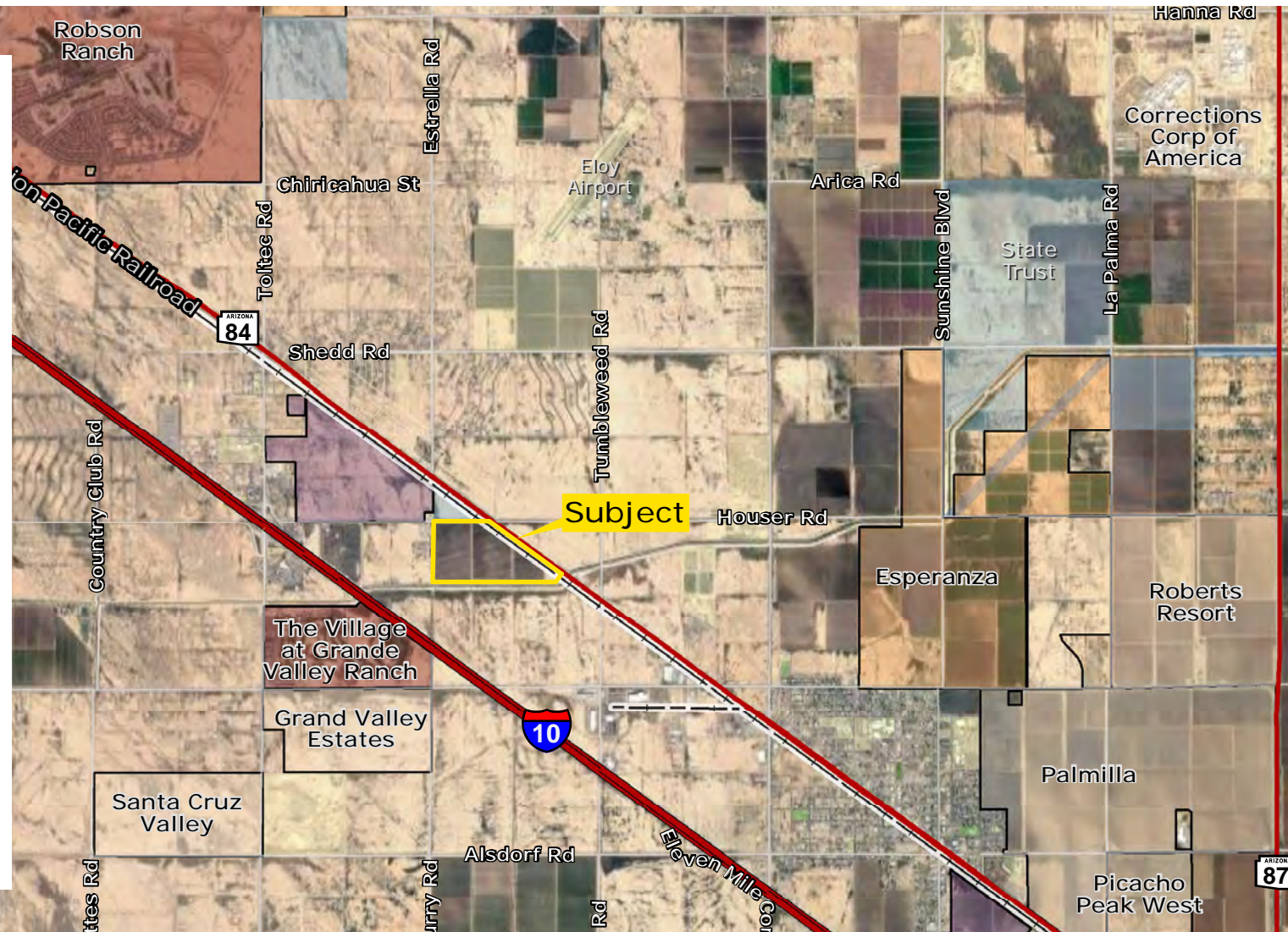
PARCEL 404-23-002C

ZONING I-2, City of Eloy

TAXES \$9,685.08 (2012)

COMMENTS

- Property has more than 1/2 mile frontage on Highway 84 and the Union Pacific Railroad.
- Property is less than 1/2 mile east of the I-10 Freeway and less than 1 mile from a full freeway interchange at I-10 and Houser Road.
- Property is located just southeast of the future Toltec Business Park.
- Across I-10 there are the master planned communities The Village at Grande Valley Ranch with a golf course and Grand Valley Estates.
- Southern portion of property lines up with the Santa Rosa Canal.
- Grandfathered water rights in Central Arizona Irrigation & Drainage District.
- Property currently being farmed.
- Low property taxes because of ag-exemption.
- Included in the Arizona Commerce Authority Opportunity Zone. [Click here for more information.](#)



Kirk McCarville | kmccarville@landadvisors.com

442 W. Kortsen Road, Suite 203, Casa Grande, Arizona 85122 ph. 520.251.0348 | www.landadvisors.com

The information contained herein is from sources deemed reliable. We have no reason to doubt its accuracy but do not guarantee it. It is the responsibility of the person reviewing this information to independently verify it. This package is subject to change, prior sale or complete withdrawal. AZPL75257-5.10.18

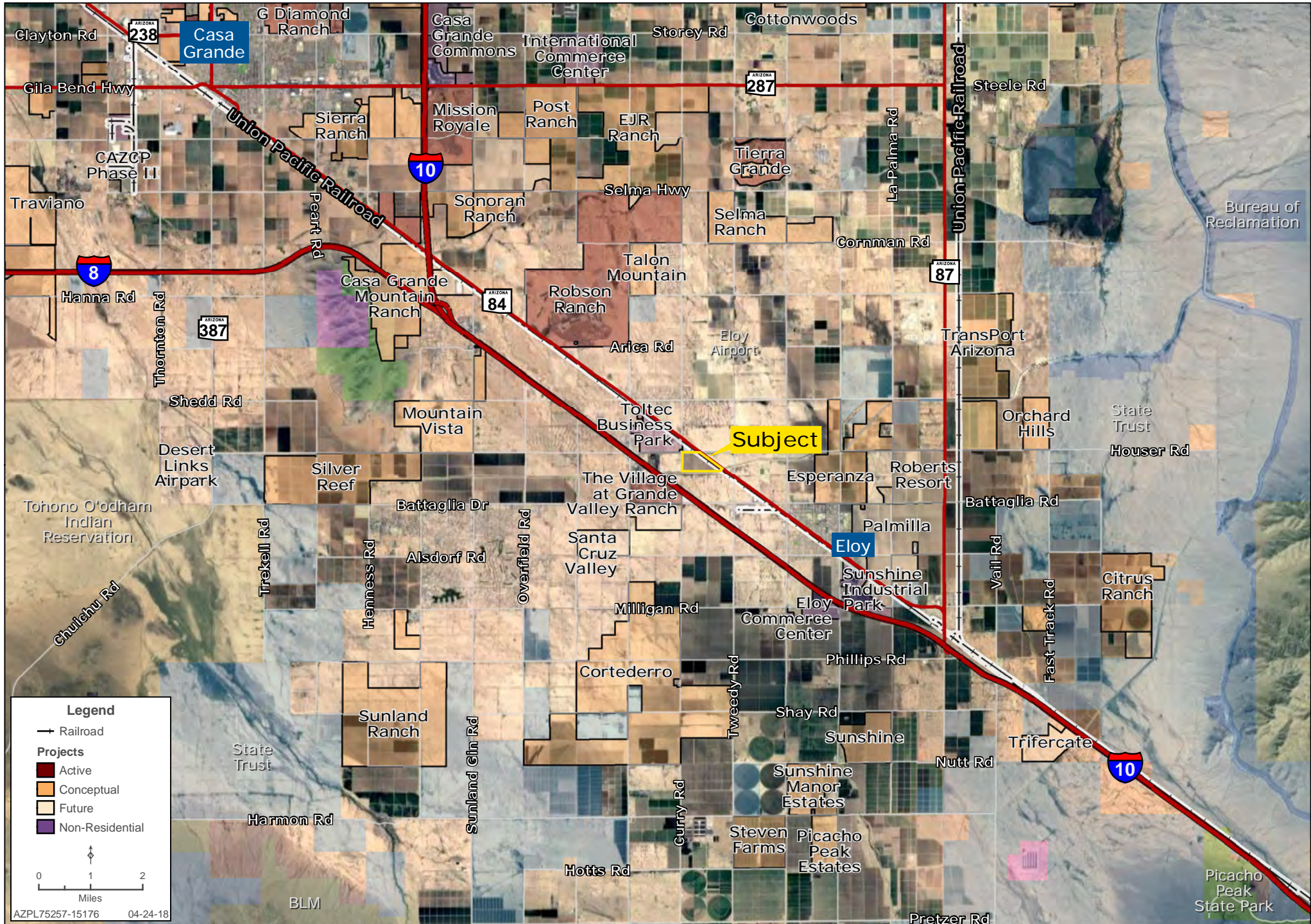
REGIONAL MAP

Kirk McCarville | 480.483.8100 | www.landadvisors.com



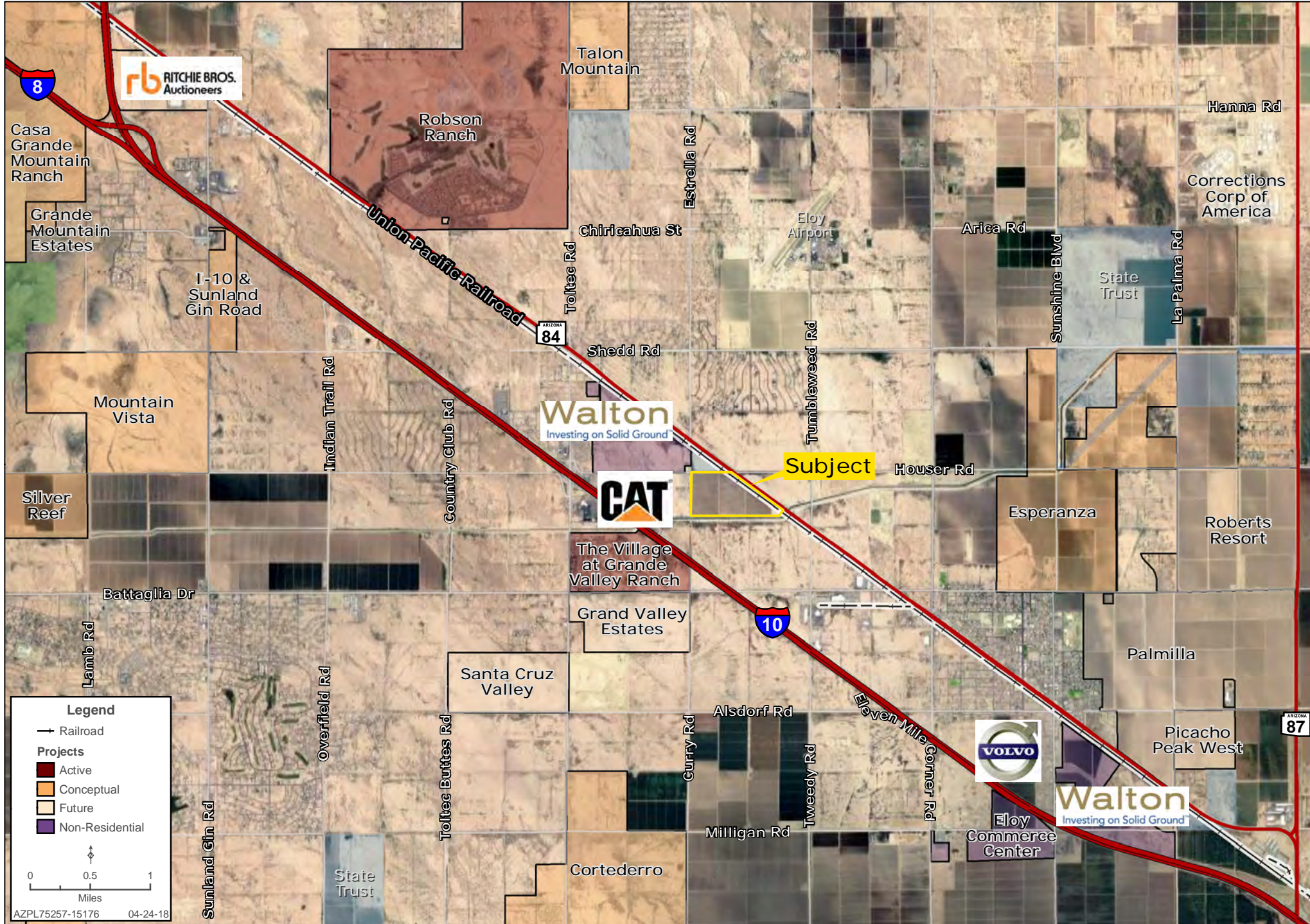
SURROUNDING DEVELOPMENT MAP

Kirk McCarville | 480.483.8100 | www.landadvisors.com



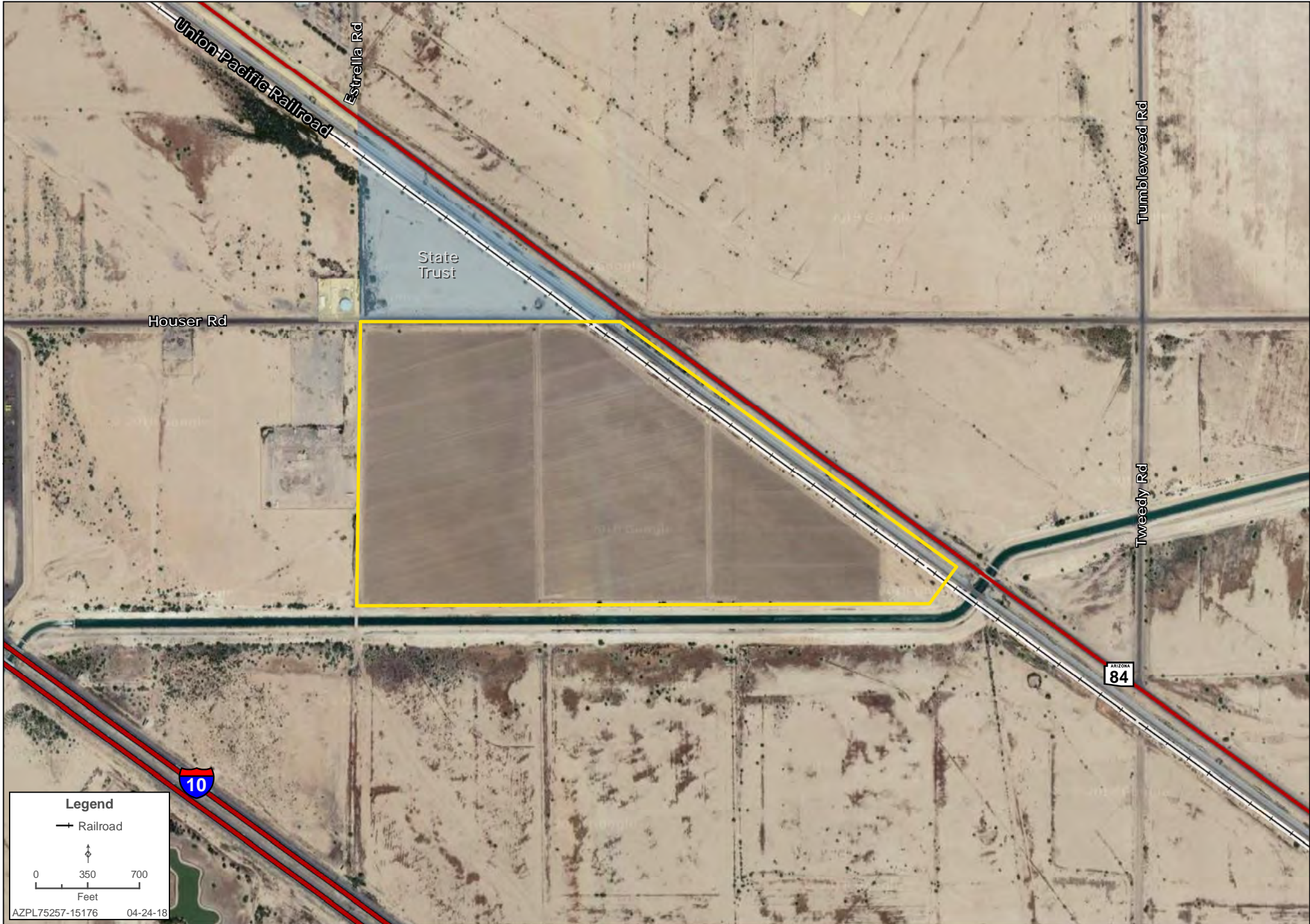
SURROUNDING AREA MAP

Kirk McCarville | 480.483.8100 | www.landadvisors.com



PROPERTY DETAIL MAP

Kirk McCarville | 480.483.8100 | www.landadvisors.com



CONCEPTUAL LANDSCAPE PLAN

