

D O M A I N



# DOMAIN 7

A 221,973 RSF CLASS "A" OFFICE  
PROJECT AT THE DOMAIN

11501 ALTERRA PARKWAY



**Anne Swift**  
(512) 682 5564  
aswift@endeavor-re.com

**Jonathan Tate**  
(512) 682 5560  
jtate@endeavor-re.com

# DOMAIN 7

---

A 221,973 RSF CLASS "A" OFFICE PROJECT AT THE DOMAIN



- Energy-efficient design and sustainable building
- Award-winning architectural team
- Structured parking at 4.0/1000 ratio
- Large 38,000 SF floor plates
- LEED® Silver Certified
- Blocks from Rock Rose Entertainment District
- Views over the Domain and Texas Hill Country
- Efficient floor plates:
  - 1.15 multi-tenant CAF
  - 1.07 single-tenant CAF
- Walk to dozens of restaurants & bars
- Access to a 1.5 mile jogging trail plus multiple fitness concepts



Lobby



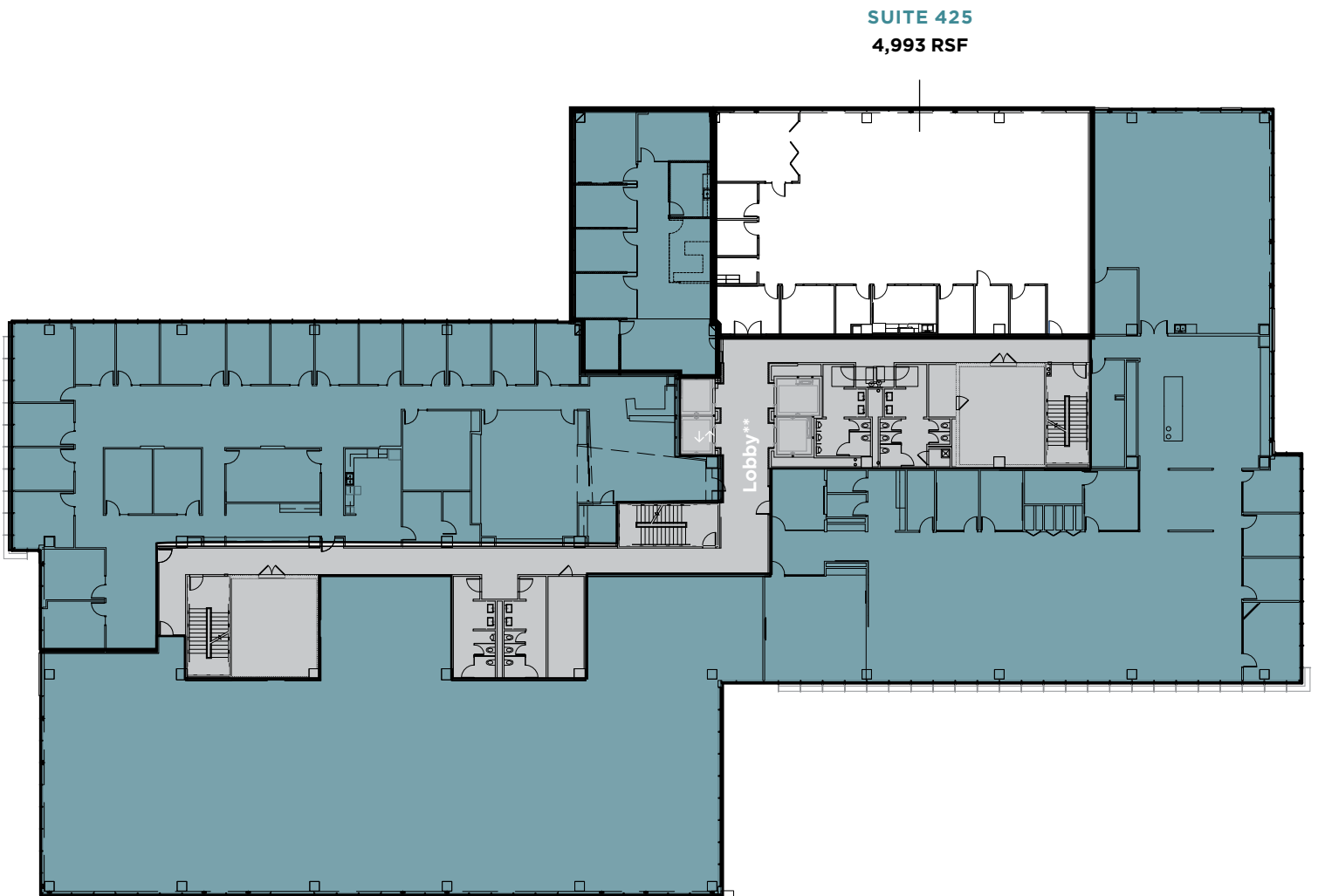
North Lobby Entrance



**SUITE 425**

4,993 RSF - Available 7/1/2021\*

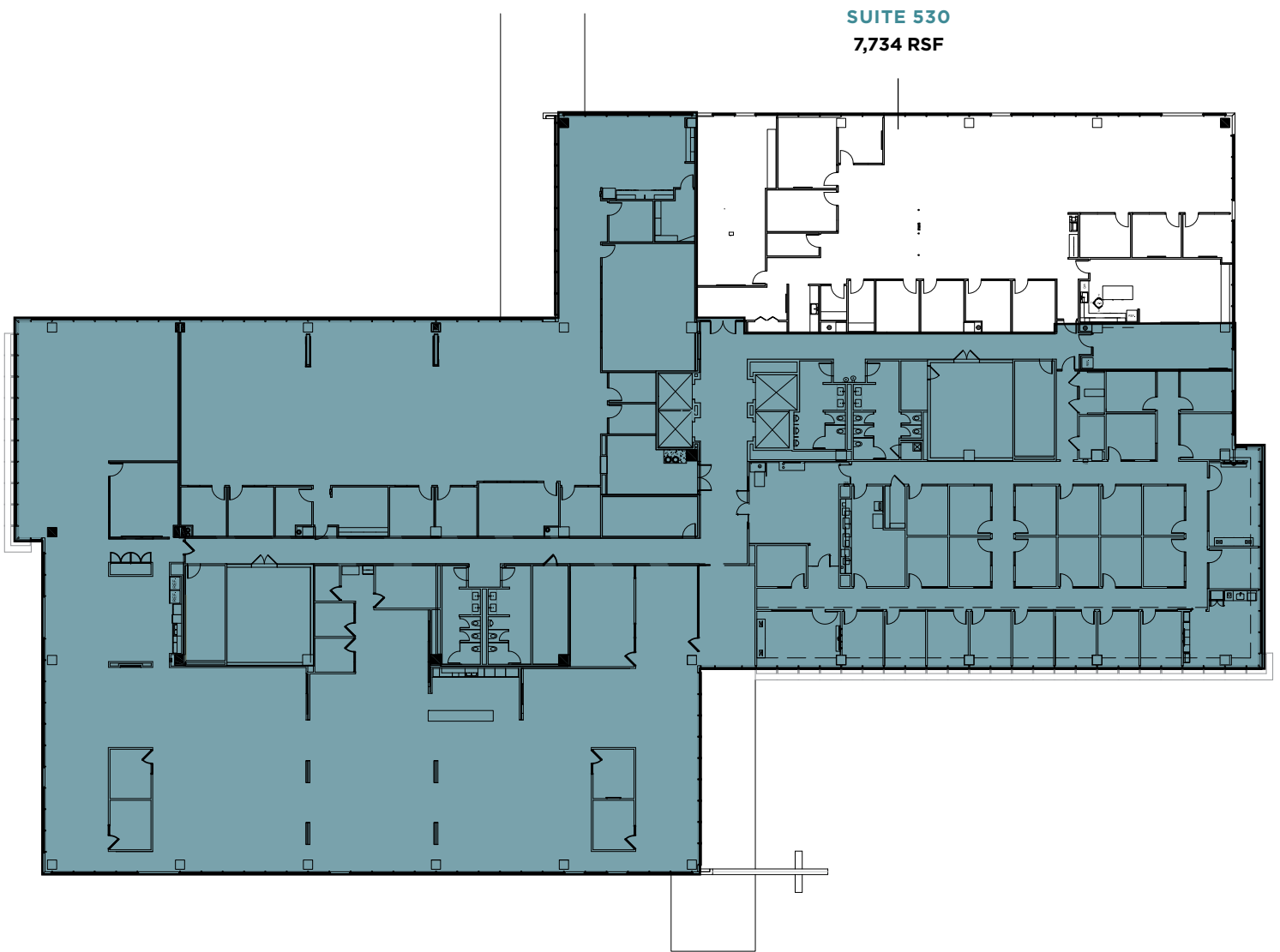
*[View a virtual tour of this space](#)*



**SUITE 530**

7,734 RSF - Available within 30 days

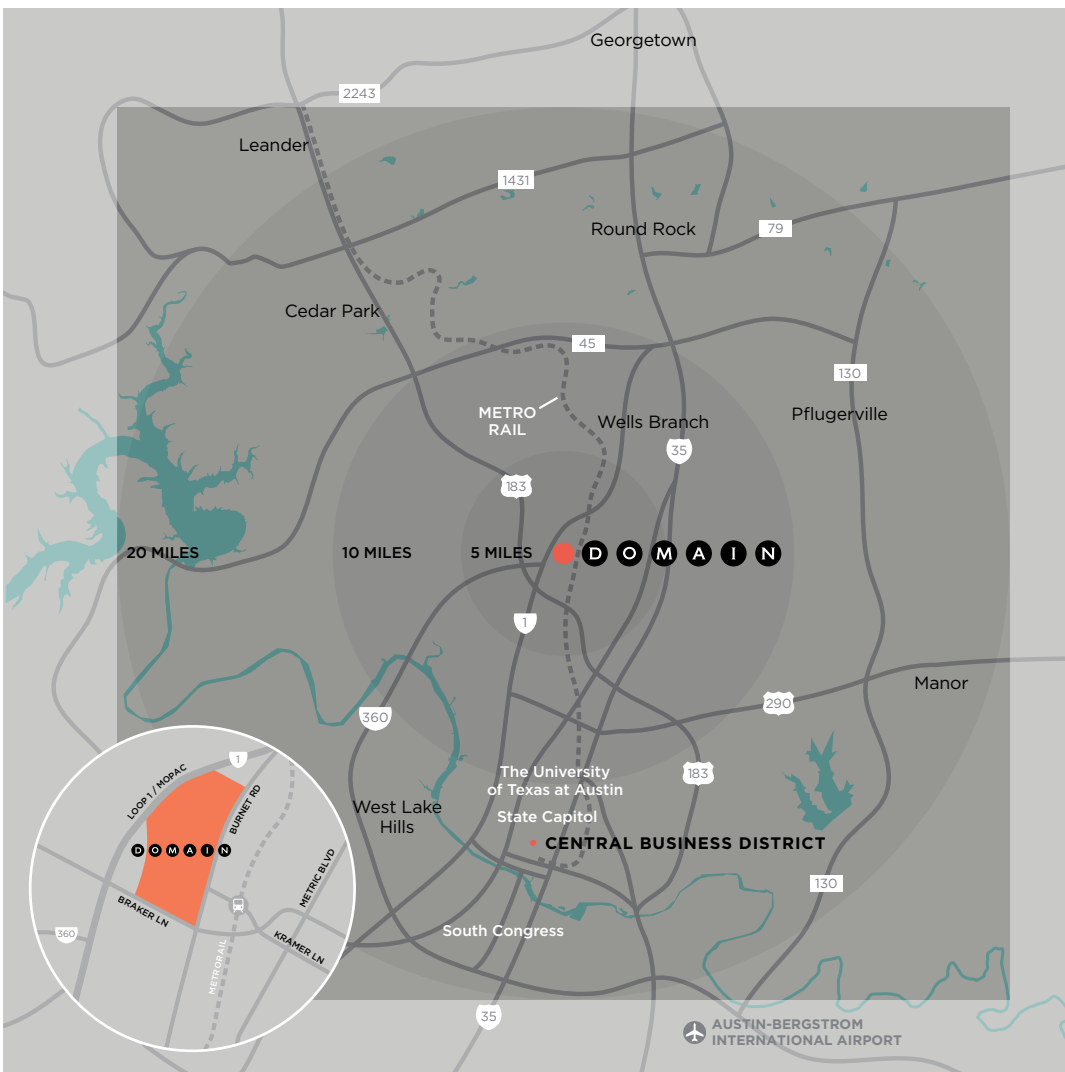
*[View a virtual tour of this space](#)*



# AUSTIN HAS IT

AN EDGE, A TONE, A DISTINCT AMBIENCE—THAT SETS IT APART FROM CITIES THAT ARE AS BIG OR BIGGER, BUT NOT SO COMPELLINGLY HIP.

AUSTIN ALSO HAS *THE DOMAIN*, a vibrant mixed use community that sets new standards for living, working, dining, and having fun. It's Austin's hottest place to see and be seen. And, a strategic venue for employers looking for a home from which to recruit talented employees.







# ROCK ROSE ENTERTAINMENT DISTRICT

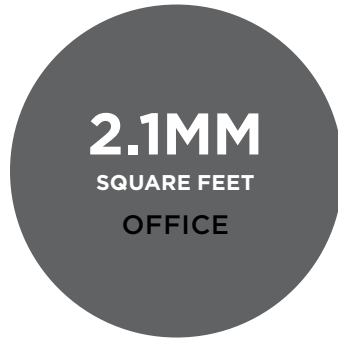
## REVEL IN IT

*ROCK ROSE IS WHERE THE DOMAIN LETS ITS HAIR DOWN.* The district mixes some of Austin’s most buzzed-about homegrown restaurants and shops with new transplants that locals will love, in an energetic, creative environment perfectly suited to socializing and people watching.





## DOMAIN EXISTING



## DOMAIN AT FULL BUILDOUT

