

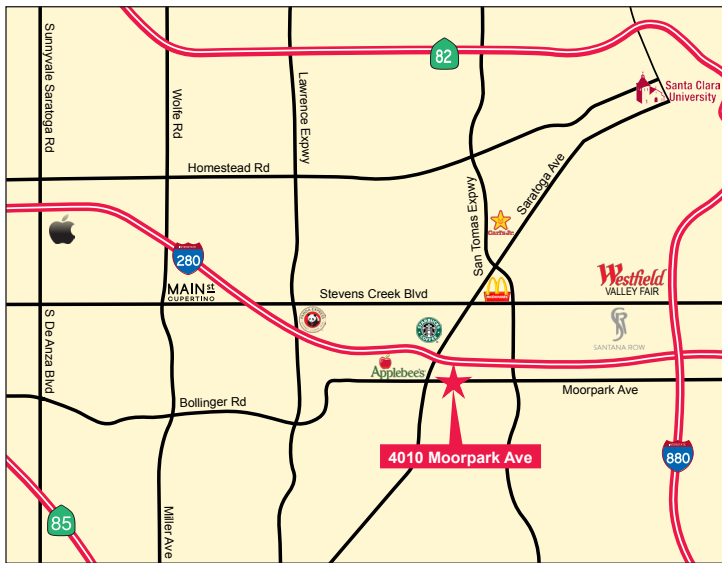
# Plug & Play Flexible Sublease

4010 Moorpark Avenue, Suite 200, San Jose



## ±1,049 Square Feet Available

We are pleased to offer the following space:



- ◆ Renovated Entry and Lobby Areas
- ◆ Accessible Freeway Access
- ◆ Conference Rooms and Tenant Lounge with Kitchen
- ◆ New Fitness Center with Shower Facilities
- ◆ Premium Location
- ◆ Flexible Floor Plans
- ◆ Ample Parking
- ◆ On-site Management
- ◆ LED May 2019
- ◆ Call to Tour
- ◆ Furniture Included: Five (5) Cubes and Three (3) Workstations

**Gabe D. Regalado** Associate Director 408.455-4913 [gabe.regalado@ngkf.com](mailto:gabe.regalado@ngkf.com) CA RE License #02008286

**Allison Pitigoi** Managing Director 408.982.8446 [apitigoi@ngkf.com](mailto:apitigoi@ngkf.com) CA RE License #002003438

**Newmark  
Knight Frank**

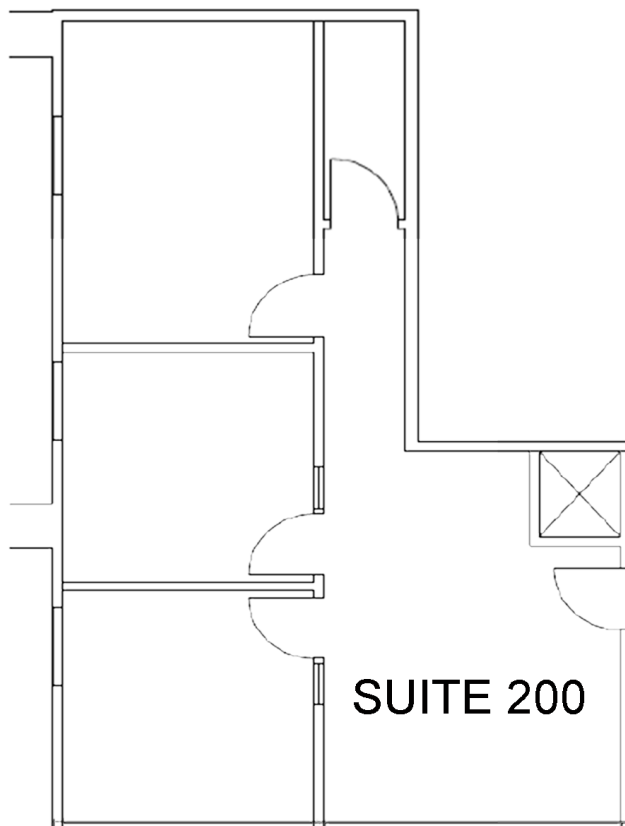
2804 Mission College Boulevard., Suite 120, Santa Clara, CA 95054 [www.ngkf.com](http://www.ngkf.com)

# Plug & Play Flexible Sublease

4010 Moorpark Avenue, Suite 200, San Jose



## Premises Floor Plan



**Gabe D. Regalado** Associate Director 408.455-4913 [gabe.regalado@ngkf.com](mailto:gabe.regalado@ngkf.com) CA RE License #02008286

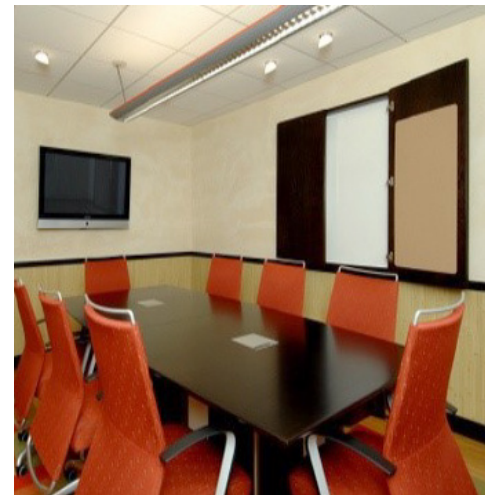
**Allison Pitigoi** Managing Director 408.982.8446 [apitigoi@ngkf.com](mailto:apitigoi@ngkf.com) CA RE License #002003438

**Newmark  
Knight Frank**

2804 Mission College Boulevard., Suite 120, Santa Clara, CA 95054 [www.ngkf.com](http://www.ngkf.com)

# Plug & Play Flexible Sublease

4010 Moorpark Avenue, Suite 200, San Jose



**Gabe D. Regalado** Associate Director 408.455-4913 [gabe.regalado@ngkf.com](mailto:gabe.regalado@ngkf.com) CA RE License #02008286

**Allison Pitigoi** Managing Director 408.982.8446 [apitigoi@ngkf.com](mailto:apitigoi@ngkf.com) CA RE License #002003438

**Newmark  
Knight Frank**

2804 Mission College Boulevard., Suite 120, Santa Clara, CA 95054 [www.ngkf.com](http://www.ngkf.com)