

L & N RAILROAD R/W

IRON ROD SET N 67°16'27" E 196.54' IRON ROD SET 30' UTILITY SERVITUDE

20' Road

SQUARE D
NEW ORLEANS EAST
INDUSTRIAL CENTER

1' RESERVATION
N 5°42'27" W
2828.99' Actual
2828.48' Plan
PT. 17
PT. 19
2787.44' Actual
2789.21' Plan
S 54°2'27" E
FENCES TO BE LOCATED

SECTION No. 1
GENTILLY ROAD INDUSTRIAL PARK

POCHE' COURT WEST (SIDE)

MICHOUX BLVD.

187.94'

D WITH
S EAST INDUSTRIAL CENTER BY
ED
ED AUGUST 8, 1961

D INDUSTRIAL PARK
ERSAL ENGINEERS, INC.

BY F. C. CANDOLFO JR.

39.27'
R=25'

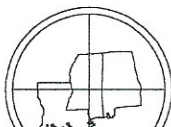
0.85' IRON ROD SET
0.20' BOLT FOUND
534.36'
207.18'
559°26'01"W
0.25'
0.45' IRON ROD FOUND

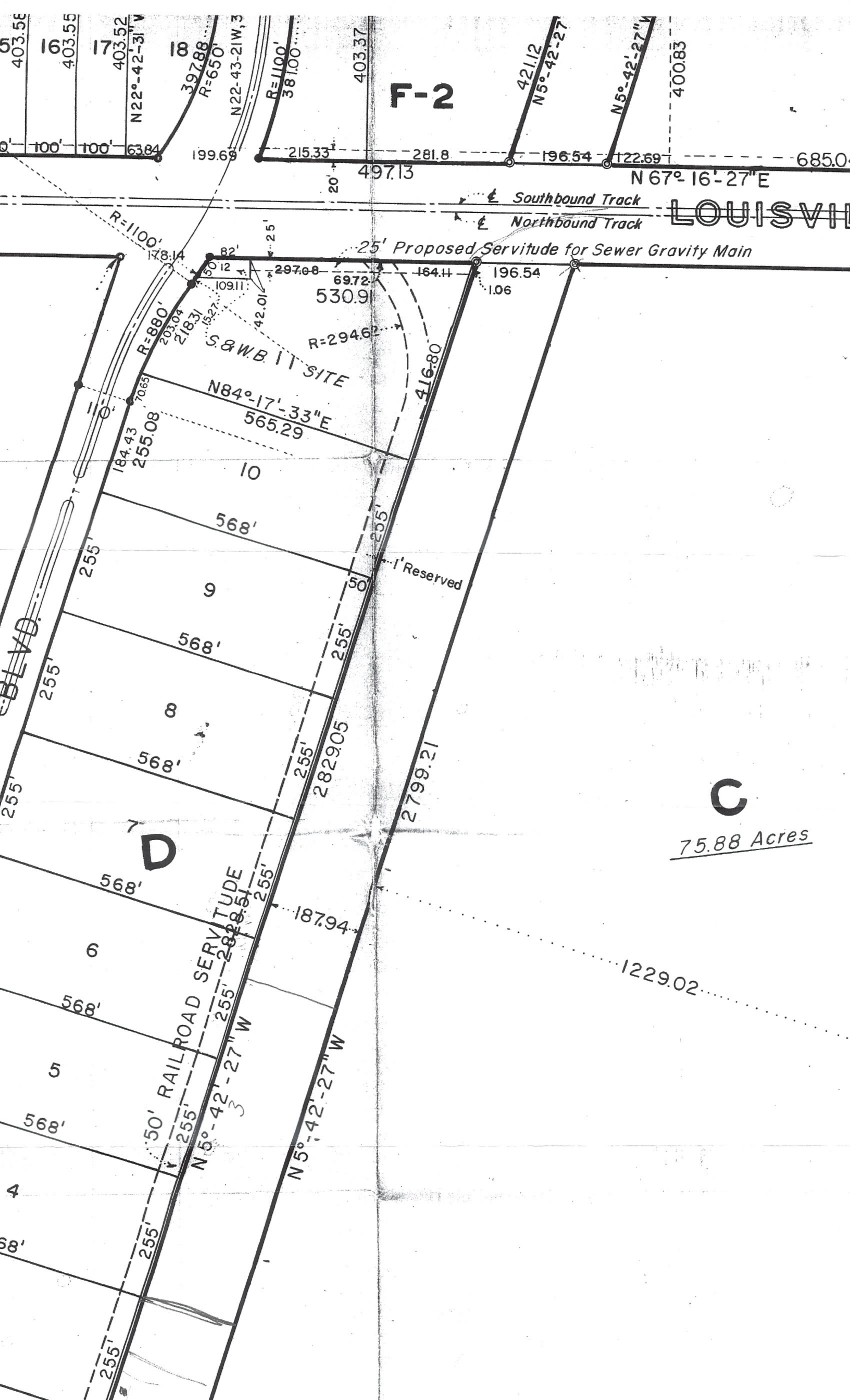
OLD GENTILLY HIGHWAY
(GENTILLY ROAD)

NOTE:
Improvements may not be to scale
for clarity. The dimensions shown
prevail over scale.

SURVEY OF LOT "Z" BEING
PORTION OF (LOTS 17 & 19)
GENTILLY ROAD SITES
SECTION A
THIRD DISTRICT
CITY OF NEW ORLEANS
ORLEANS PARISH, LOUISIANA

DADING, MARQUES &
ASSOCIATES, INC.





F-2

LOUISVILL

C

75.88 Acres

D

50' RAILROAD SERVITUDE
 N 5°-42'-27" W
 2829.05

25' Proposed Servitude for Sewer Gravity Main

Southbound Track
 Northbound Track

S. & W. B. II SITE

N 84°-17'-33" E
 565.29

1' Reserved

5 403.5E
 16 403.55
 17 403.52
 N 22°-42'-31" V

397.88
 R=650'
 N 22-43-21 W, 3

R=1100'
 381.00

403.37

421.12
 N 5°-42'-27"

N 5°-42'-27"
 400.83

S BLVD.

4 568'
 5 568'
 6 568'
 8 568'
 9 568'
 10 568'

255'

100' 100' 63.84 199.69 215.33 281.8 196.54 122.69 685.0

20' 497.13 N 67°-16'-27" E

178.14 82 25' 297.08 69.72 164.11 196.54 106

R=1100' 203.04 218.31 152.7 42.01 50 12 109.11 530.9

R=880' 70.65 184.43 255.08 R=294.62' 416.80

255' 255' 255' 255' 255' 255' 255'

2829.05 2799.21

187.94 1229.02

255' 255' 255' 255' 255' 255' 255'

255' 255' 255' 255' 255' 255' 255'

255' 255' 255' 255' 255' 255' 255'

255' 255' 255' 255' 255' 255' 255'

255' 255' 255' 255' 255' 255' 255'

255' 255' 255' 255' 255' 255' 255'

255' 255' 255' 255' 255' 255' 255'

255' 255' 255' 255' 255' 255' 255'

255' 255' 255' 255' 255' 255' 255'

255' 255' 255' 255' 255' 255' 255'

255' 255' 255' 255' 255' 255' 255'