

## San Rafael Shopping Center

1740-1948 NE 122nd Ave  
Portland, Oregon

NE 122nd Avenue and  
Halsey Street

Anchored by Winco Foods

Includes several retail pads

Two multi-tenant buildings

2,029 SF - 8,929 SF available

4.1/1,000 parking ratio

General Commercial zoning

Easy access to Highway I-84

High visibility location

Motivated owner



### Location



### Contact

**Corine Nussmeier**

503.721.2724

corinen@kiddermathews.com

**Emily Matza**

503.721.2725

ematza@kiddermathews.com

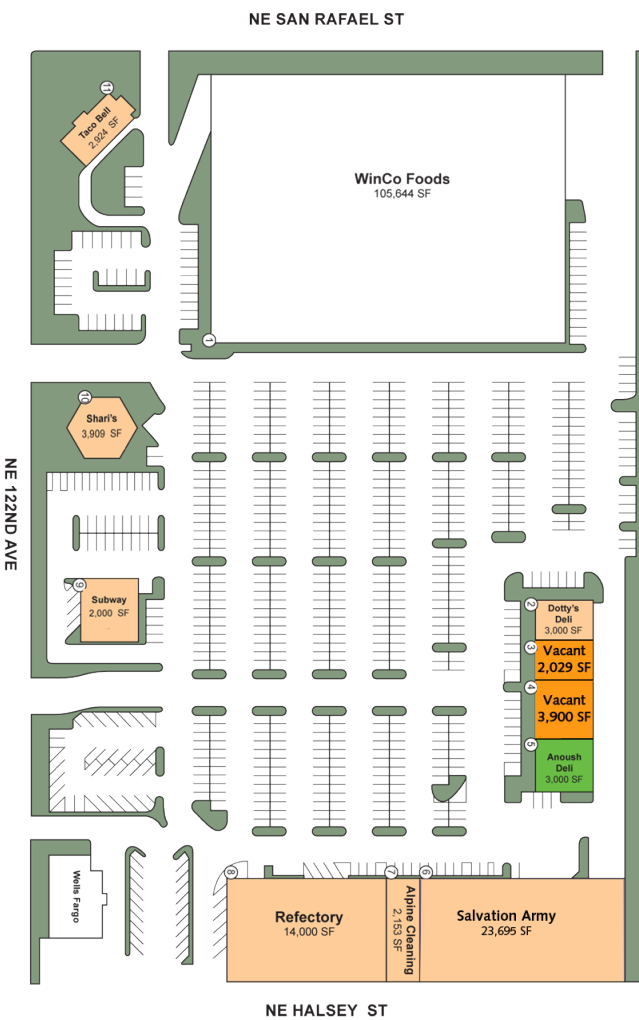
## San Rafael Shopping Center

### DEMOGRAPHICS

	1 mile	3 miles	5 miles
<b>Population</b>	17,043	142,451	347,390
<b>Av HH Income</b>	\$61,850	\$60,577	\$65,309
<b>Traffic Count on NE 122nd</b>	28,956 ADT		

### AVAILABILITY

Space	Tenant	SF
1	Winco	105,644
2	Dotty's Deli	3,000
3	Vacant	2,029
4	Vacant	3,900
5	Anoush Deli	3,000 (month to month)
6	Salvation Army	23,695
7	Alpine Cleaning	2,153
8	Refectory	14,000
9	Subway	2,000
10	Shari's	3,909
11	Taco Bell	2,924

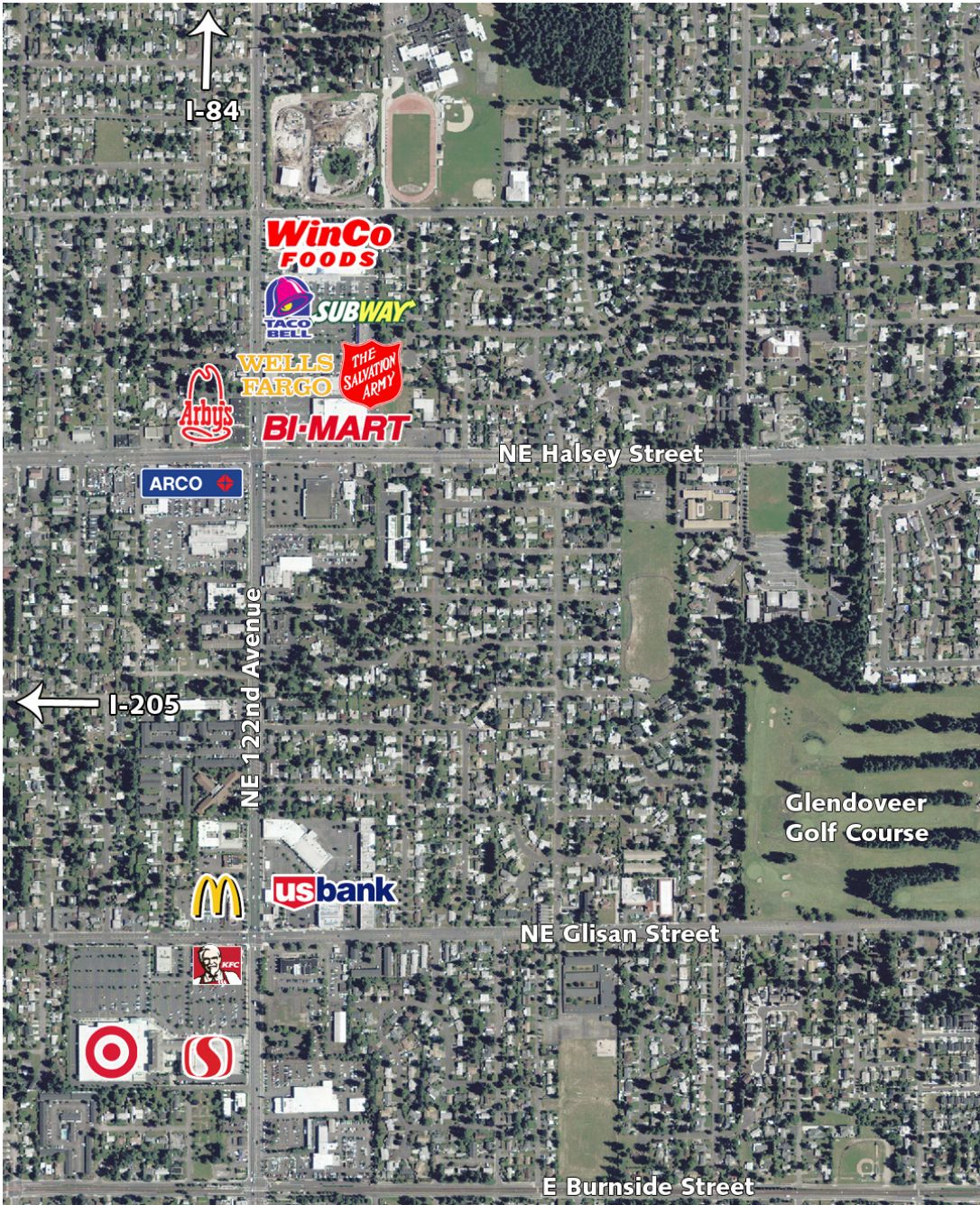


### Contact

**Corine Nussmeier**  
503.721.2724  
corinen@kiddermathews.com

**Emily Matza**  
503.721.2725  
ematza@kiddermathews.com

## San Rafael Shopping Center



### Contact

**Corine Nussmeier**  
503.721.2724  
corinen@kiddermathews.com

**Emily Matza**  
503.721.2725  
ematza@kiddermathews.com