



# DAYCARE FACILITY

950 SW 37th Street, Blue Springs, MO

FOR SALE



## SALE PRICE: \$300,000 | 3,000 SF BUILDING

### DEMOGRAPHICS

	1 mile	3 miles	5 miles
Estimated Population	5,766	49,838	99,659
Avg. Household Income	\$80,766	\$83,409	\$91,166

- 10,000 Sq Ft additional ground for play area
- Currently vacant
- High traffic area
- Located off 40 Highway & 37th Street
- 40 Highway carries over 24,000 cars per day



CLICK HERE TO VIEW MORE LISTING INFORMATION

For More Information Contact:

WILLIAM GLASGOW | 816.412.7394 | [wglasgow@blockandco.com](mailto:wglasgow@blockandco.com)

Exclusive Agent



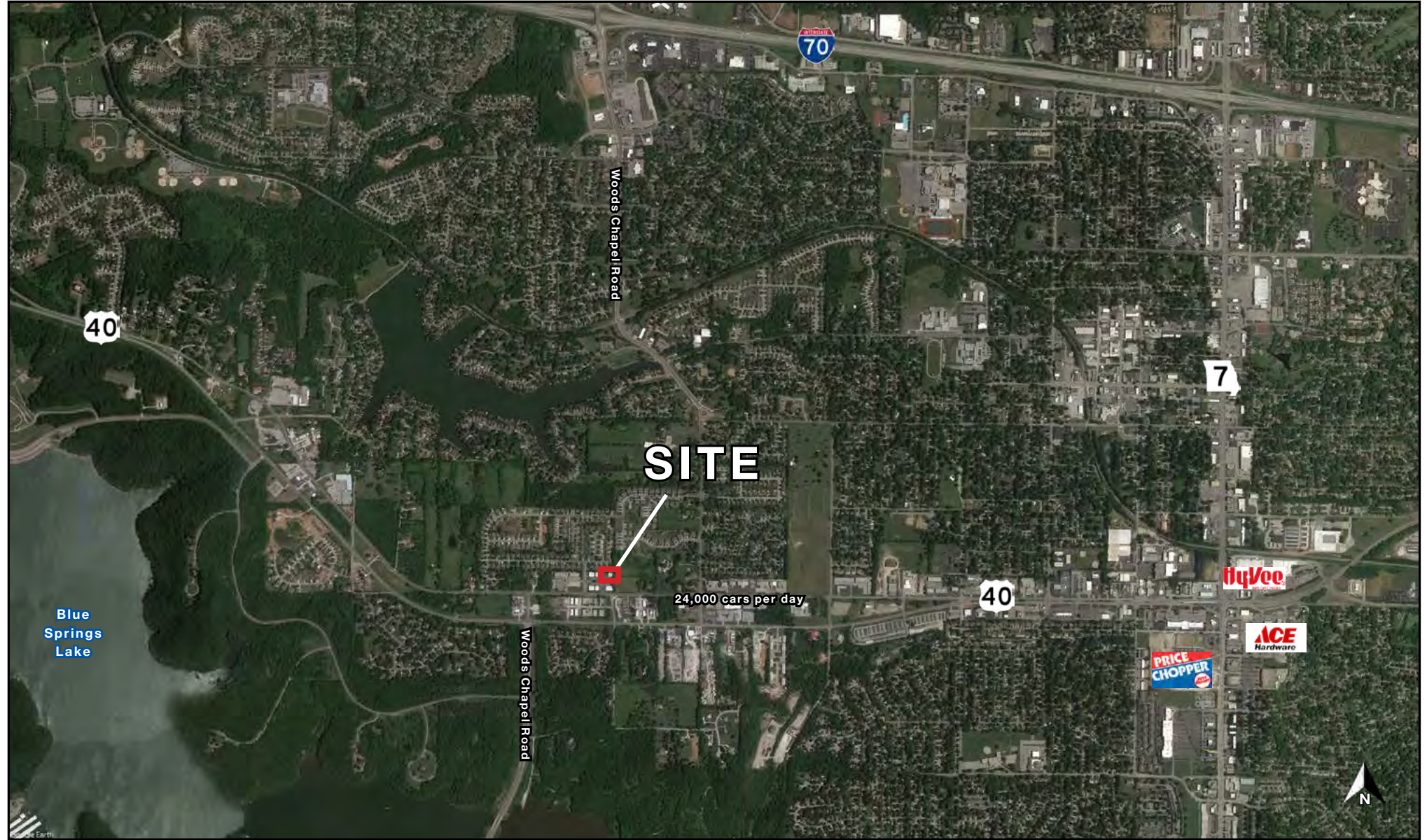


# DAYCARE FACILITY

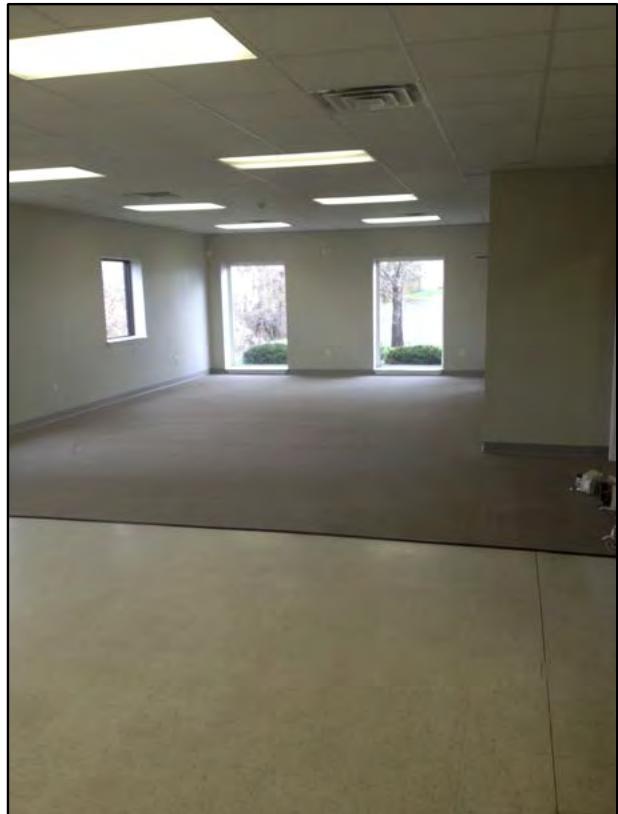
950 SW 37th Street, Blue Springs, MO

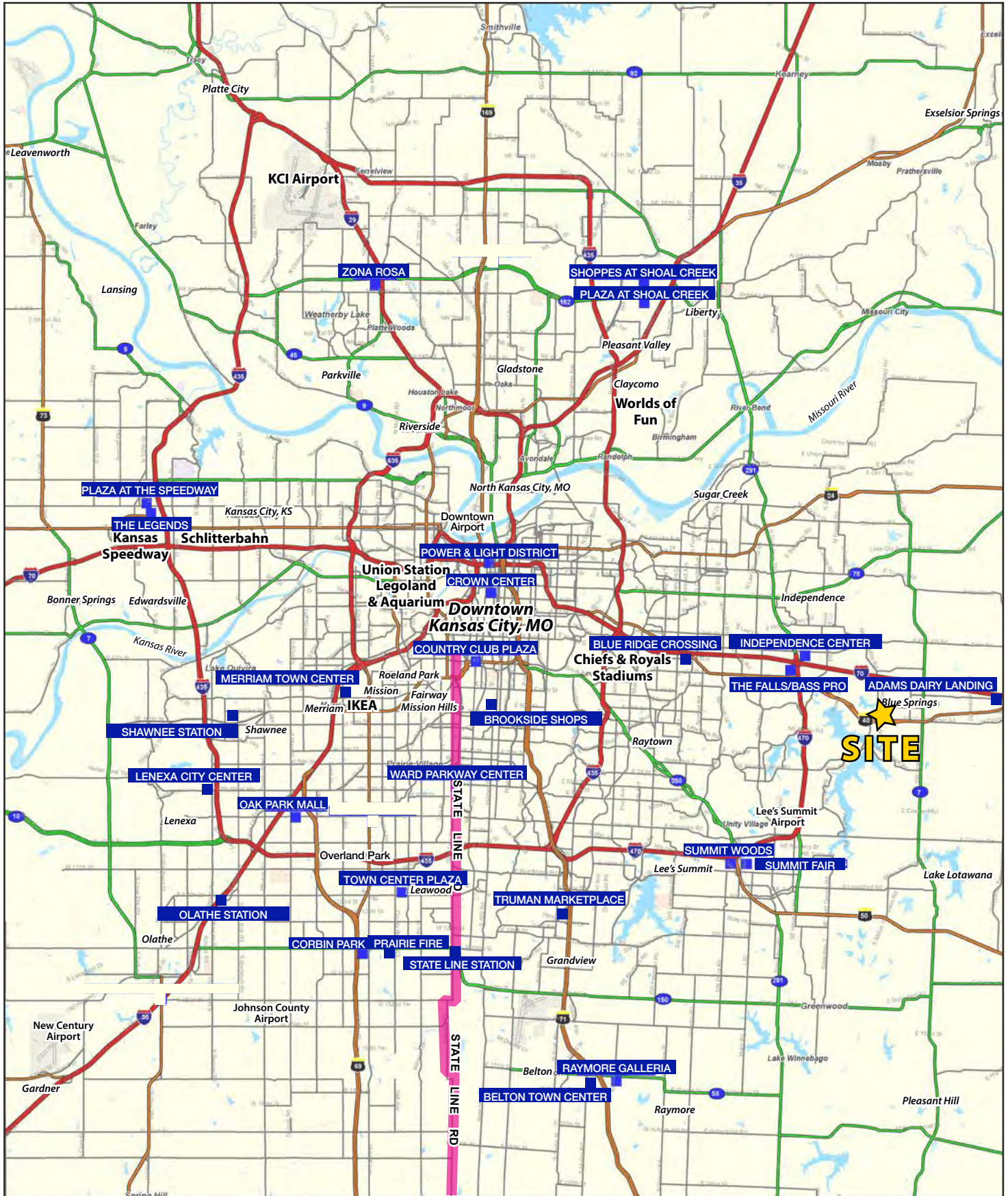
FOR  
SALE

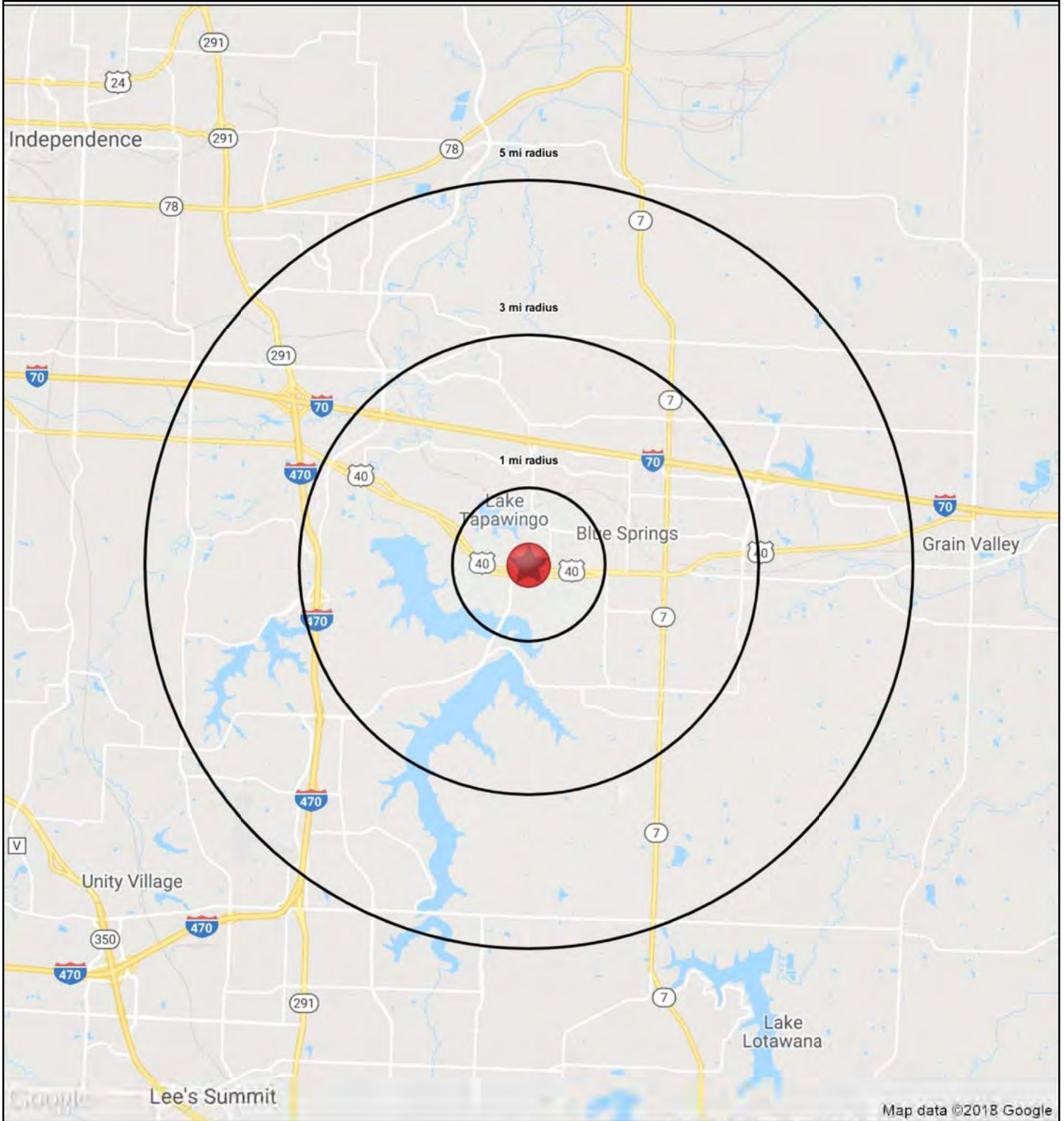
AERIAL



PHOTOS









# DAYCARE FACILITY

950 SW 37th Street, Blue Springs, MO

**FOR  
SALE**

950 SW 37th Street Blue Springs, MO 64015		1 mi radius	3 mi radius	5 mi radius
<b>POPULATION</b>	2018 Estimated Population	5,766	49,838	99,659
	2023 Projected Population	5,902	51,286	102,667
	2010 Census Population	5,621	46,984	93,901
	2000 Census Population	5,051	43,395	78,107
	Projected Annual Growth 2018 to 2023	0.5%	0.6%	0.6%
	Historical Annual Growth 2000 to 2018	0.8%	0.8%	1.5%
	2018 Median Age	38	36	37.6
<b>HOUSEHOLDS</b>	2018 Estimated Households	2,315	19,784	39,872
	2023 Projected Households	2,350	20,127	40,608
	2010 Census Households	2,155	17,809	35,900
	2000 Census Households	1,814	15,940	28,756
	Projected Annual Growth 2018 to 2023	0.3%	0.3%	0.4%
	Historical Annual Growth 2000 to 2018	1.5%	1.3%	2.1%
<b>RACE AND ETHNICITY</b>	2018 Estimated White	87.0%	85.9%	86.3%
	2018 Estimated Black or African American	6.9%	6.7%	6.7%
	2018 Estimated Asian or Pacific Islander	1.1%	2.2%	2.1%
	2018 Estimated American Indian or Native Alaskan	0.5%	0.4%	0.4%
	2018 Estimated Other Races	4.4%	4.9%	4.4%
	2018 Estimated Hispanic	5.3%	5.4%	5.2%
<b>INCOME</b>	2018 Estimated Average Household Income	\$80,766	\$83,409	\$91,166
	2018 Estimated Median Household Income	\$69,974	\$72,223	\$76,978
	2018 Estimated Per Capita Income	\$32,424	\$33,128	\$36,511
<b>EDUCATION (AGE 25+)</b>	2018 Estimated Elementary (Grade Level 0 to 8)	0.7%	0.9%	1.0%
	2018 Estimated Some High School (Grade Level 9 to 11)	4.0%	4.4%	3.8%
	2018 Estimated High School Graduate	25.7%	25.4%	25.0%
	2018 Estimated Some College	25.2%	25.0%	24.7%
	2018 Estimated Associates Degree Only	9.5%	8.6%	8.3%
	2018 Estimated Bachelors Degree Only	23.5%	22.7%	23.2%
	2018 Estimated Graduate Degree	11.5%	13.0%	14.0%
<b>BUSINESS</b>	2018 Estimated Total Businesses	189	2,181	3,768
	2018 Estimated Total Employees	2,876	24,088	42,909
	2018 Estimated Employee Population per Business	15.2	11.0	11.4
	2018 Estimated Residential Population per Business	30.5	22.8	26.5

