

Executive Office Suites



FOR LEASE PROPERTY SPECIFICATIONS

Description:	Executive Office Suites
For Lease:	Starting at 140 SF
Year Built:	2008
HVAC System:	3.5 Tons/Unit
Electric:	100 Amp
Sprinklered	Yes
Washrooms:	1 Handicapped/Unit
Ceiling:	10'
Possession:	Immediate
Parking:	24 Stalls
Sewer/Water:	Village
Zoning:	B-2 PUD
Lease Term:	1 Year Minimum
Lease Price:	\$600-850 Per Month Gross

PROPERTY OVERVIEW

Starting at 140 SF

- Gross rent includes utilities, internet, conference/breakroom, security system and high-level finishes
- Just off Randall Road, behind BP Amoco & Dunkin' Donuts
- Join Salon 37 and Pure Dry Cleaners
- Located across the street from Walmart on the east side of Randall Rd.
- Area retailers include Best Buy, La-Z Boy, Walmart, TJ Maxx, JCPenney, Trader Joe's and Nordstrom Rack

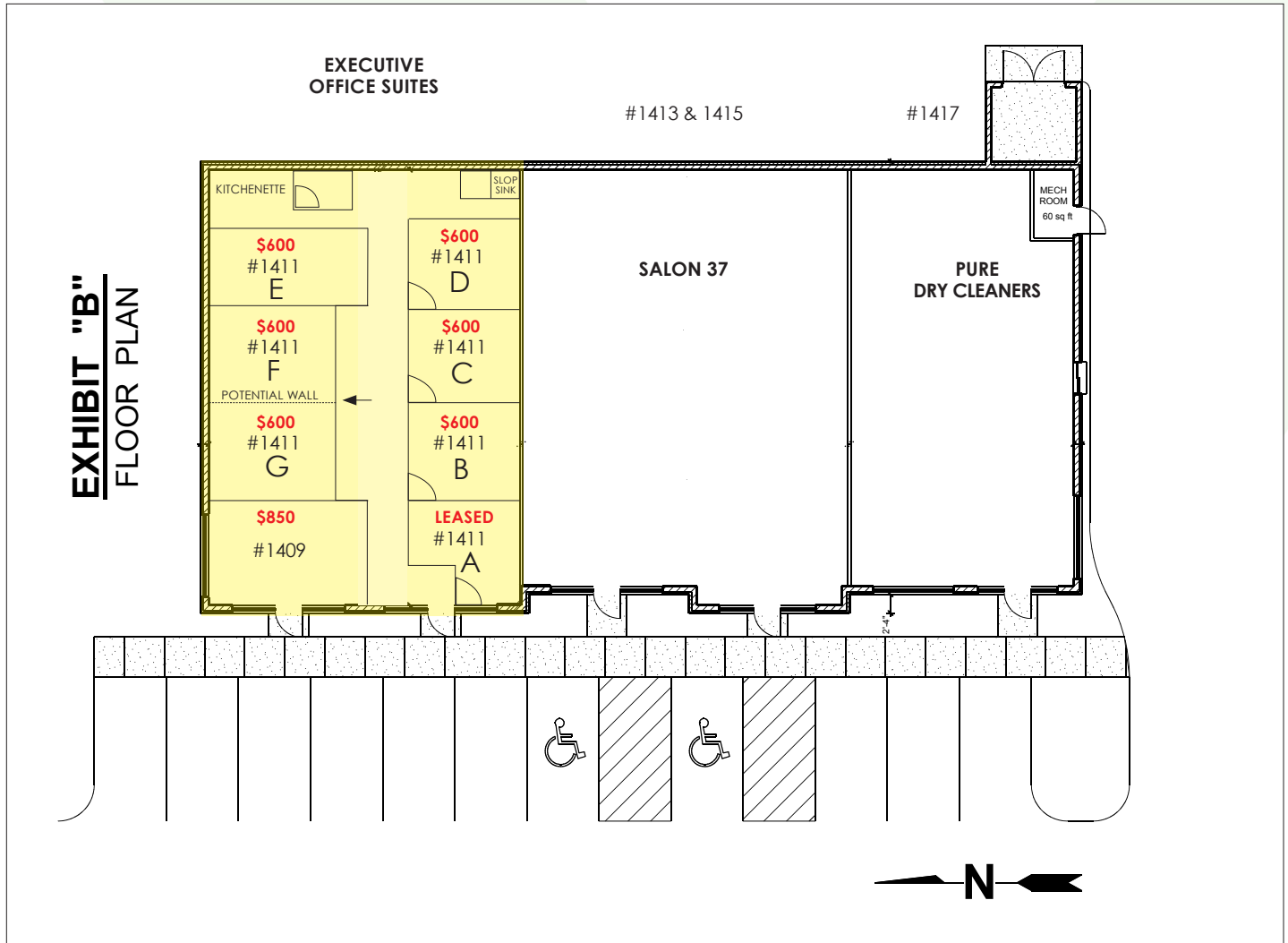
Presented By:

Linda Kost
Senior Broker/Partner
847.910.8820
LKost@realtymetrix.com

Dave Schmidt
Managing Broker/Partner
847.404.3851
DSchmidt@realtymetrix.com

Realty Metrix Commercial
2390 Esplanade Drive
Suite 201
Algonquin, IL 60102





Presented By:

Linda Kost
Senior Broker/Partner
847.910.8820
LKost@realtymetrix.com

Dave Schmidt
Managing Broker/Partner
847.404.3851
DSchmidt@realtymetrix.com

Realty Metrix Commercial
2390 Esplanade Drive
Suite 201
Algonquin, IL 60102





Presented By:

Linda Kost
Senior Broker/Partner
847.910.8820
LKost@realtymetrix.com

Dave Schmidt
Managing Broker/Partner
847.404.3851
DSchmidt@realtymetrix.com

Realty Metrix Commercial
2390 Esplanade Drive
Suite 201
Algonquin, IL 60102





SOUTHBOUND VIEW



NORTHBOUND VIEW

Presented By:

Linda Kost
Senior Broker/Partner
847.910.8820
LKost@realtymetrix.com

Dave Schmidt
Managing Broker/Partner
847.404.3851
DSchmidt@realtymetrix.com

Realty Metrix Commercial
2390 Esplanade Drive
Suite 201
Algonquin, IL 60102

