



SEAGATE
Corporate Center
a Rockefeller Group Development

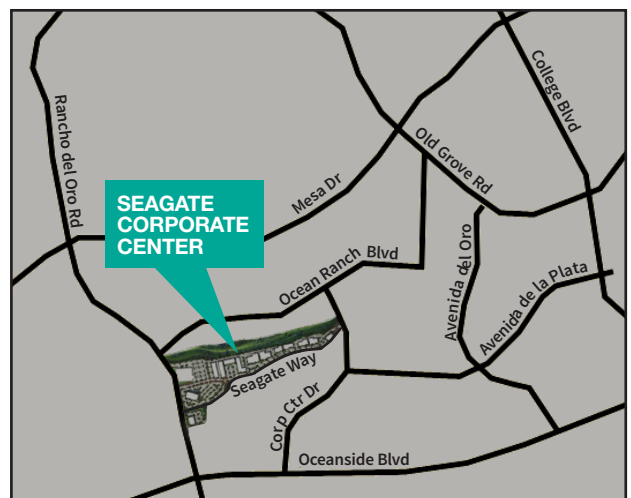


For Sale

Centrally located corporate center with ±15,000 to 17,500 SF build-to-suit opportunity

Property Features

- Build-to-suit
- ±15,000 to 17,500 square feet
- Zoning allows most office, retail and industrial uses
- Corporate neighbors include Genentech, Coca-Cola, OneSource, HK Plastics and the VA Clinic
- Part of the master planned Ocean Ranch Corporate Centre
- Immediate access to hotels and restaurants



For more information, contact:

Ron King, SIOR
858.369.3011
rking@kiddermathews.com
LIC # 00868661

Bob Willingham, SIOR
858.369.3013
bobw@kiddermathews.com
LIC # 01469841

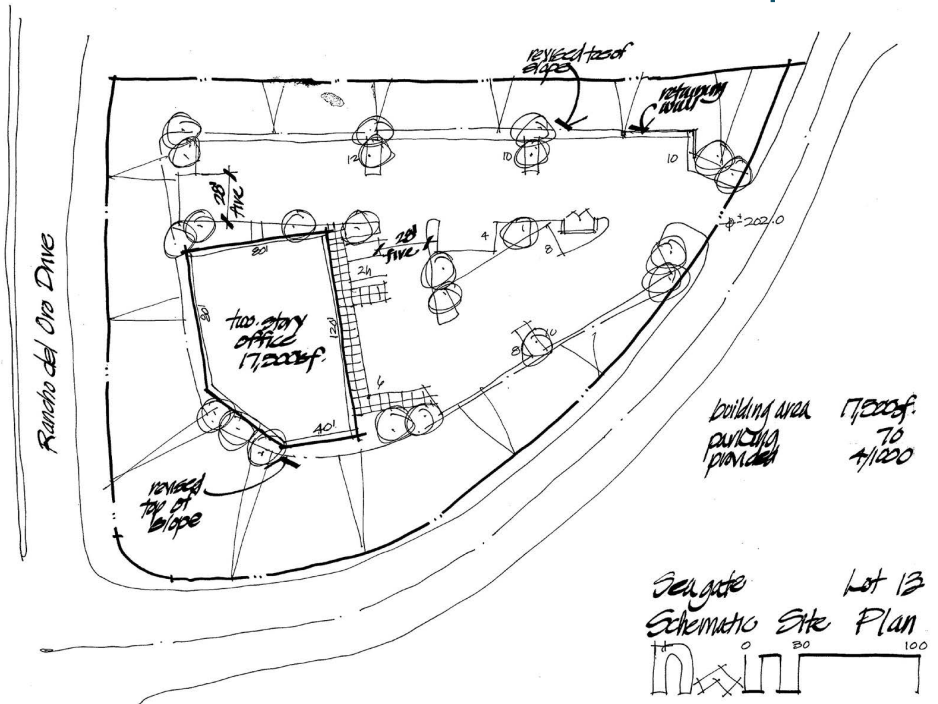
seagatecc.com
kiddermathews.com



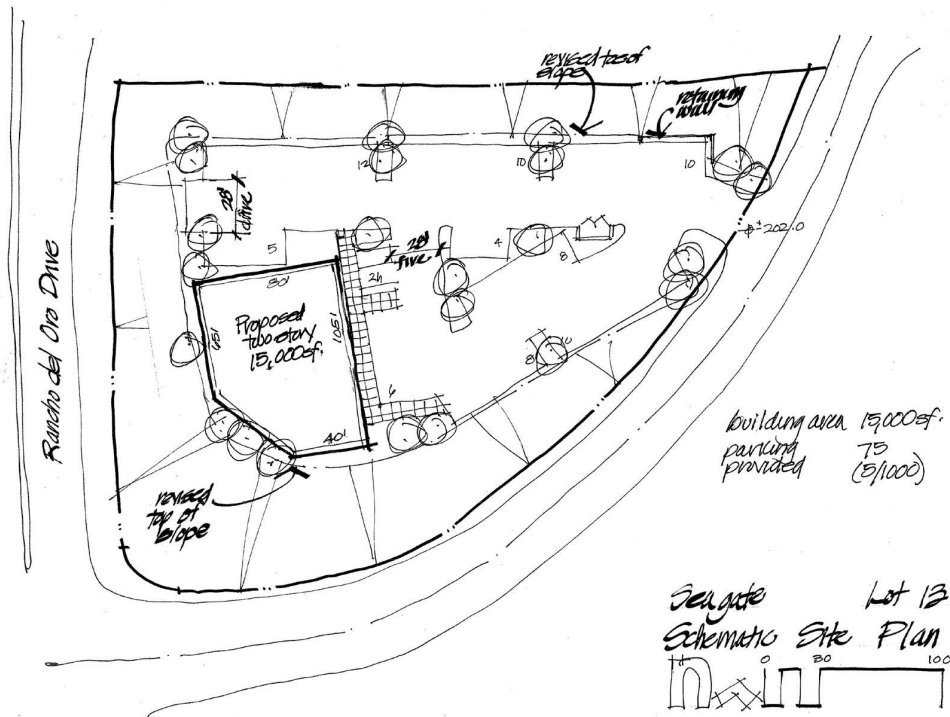


SEAGATE
Corporate Center
a Rockefeller Group Development

Site Plan - Option 1



Site Plan - Option 2



For more information, contact:

Ron King, SIOR
858.369.3011
rking@kiddermathews.com
LIC # 00868661

Bob Willingham, SIOR
858.369.3013
bobw@kiddermathews.com
LIC # 01469841

seagatecc.com
kiddermathews.com



