



Office Space Available For Lease

### Opportunity

- 900 sf available
- Ideal for medical office use
- Second floor
- Facade signage available
- Elevator

### Rate

- \$18.00/sf, MG
- Tenant pays for utilities

### Location

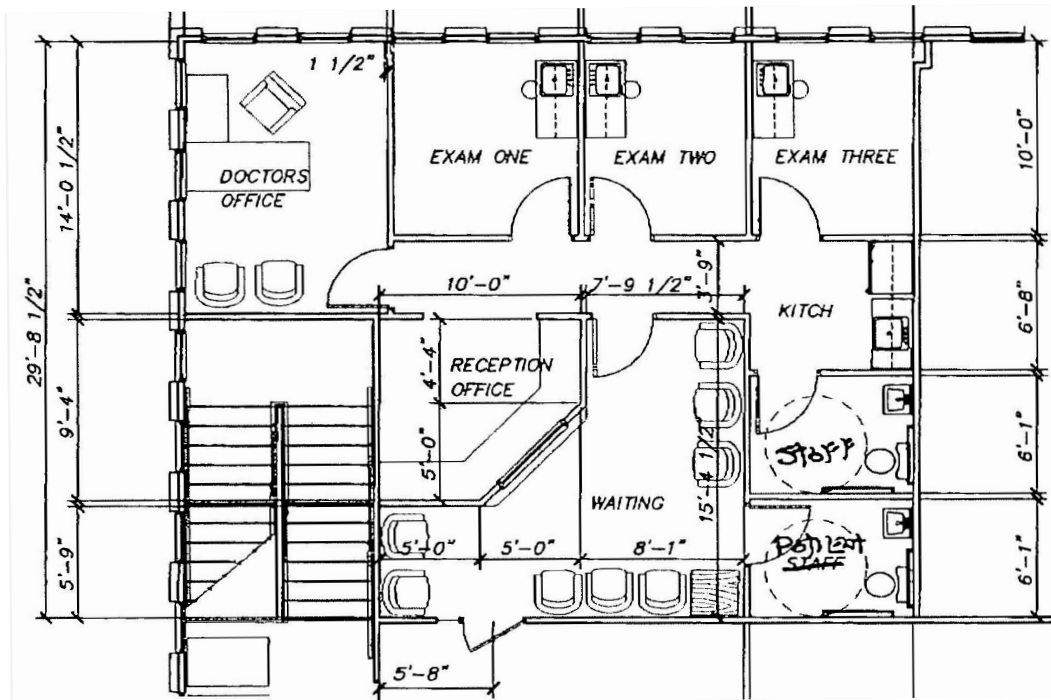
- Located in Holly Springs Professional Center
- Southwest Wake County Submarket
- One mile to restaurants and retail at Sunset Lake Commons Shopping Center
- Less than two miles to Downtown Holly Springs
- Less than two miles to Highway 55
- Approximately three and a half miles to I-540



For more information, please contact:

**Baxter M. Walker III**, Principal, SIOR, CCIM  
D 919 913 1118  
C 919 606 3319  
baxter.walker@avisonyoung.com

5440 Wade Park Boulevard  
Suite 200  
Raleigh, NC 27607  
919 785 3434

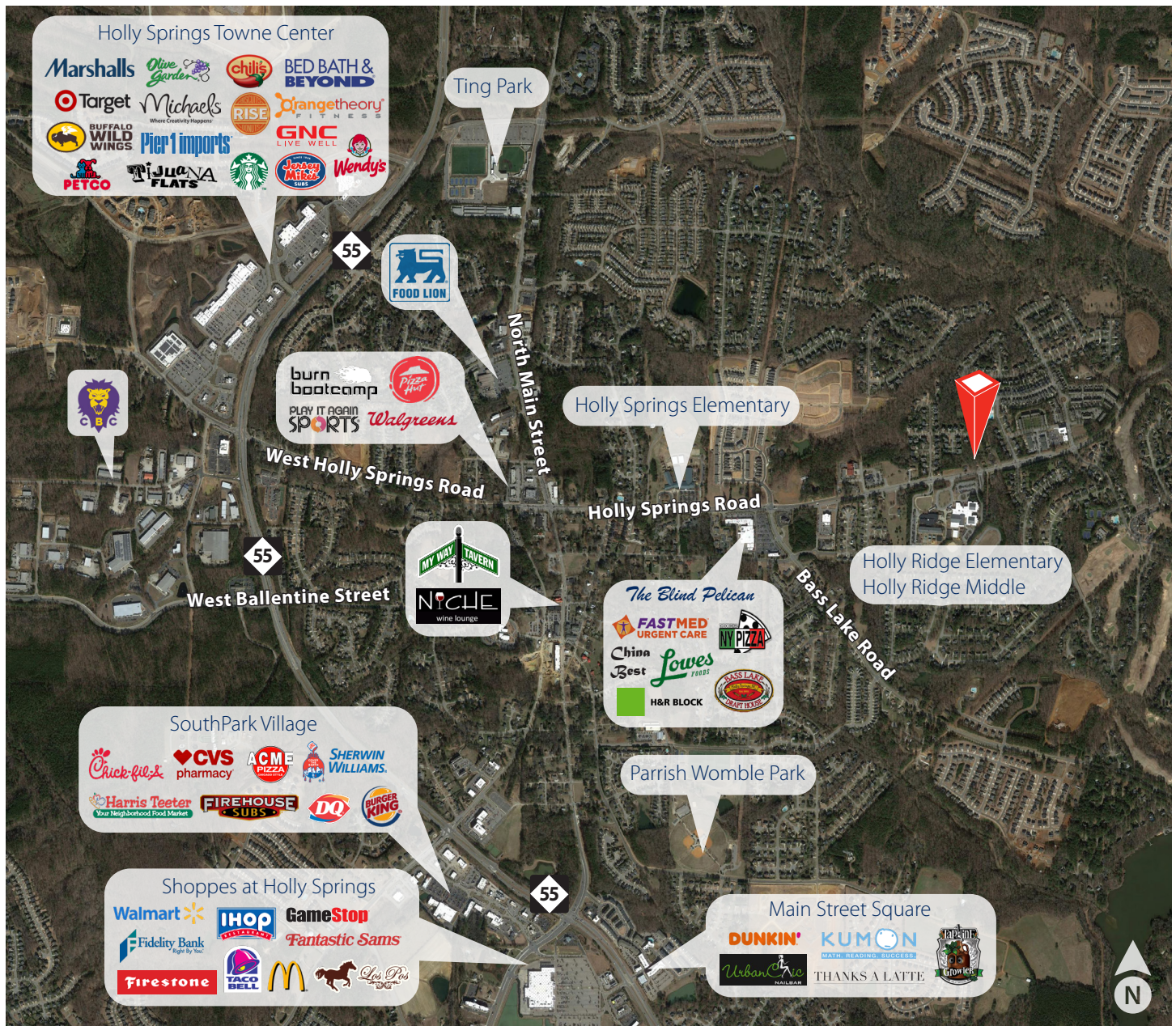


[avisonyoung.com](http://avisonyoung.com)

**Baxter M. Walker III**, Principal, SIOR, CCIM  
D 919 913 1118  
C 919 606 3319  
[baxter.walker@avisonyoung.com](mailto:baxter.walker@avisonyoung.com)



Nearby Amenities



Demographics

Esri 2019	1 Mile	3 Miles	5 Miles
Population	8,644	49,678	104,921
Households	2,768	16,655	35,874
Avg. Household Income	\$108,231	\$102,027	\$101,600

Traffic Counts

Esri	Vehicles Per Day (VPD)
Holly Springs Road	13,000
Sunset Lake Road	9,300
Highway 55	26,000



avisonyoung.com

**Baxter M. Walker III**, Principal, SIOR, CCIM  
D 919 913 1118  
C 919 606 3319  
baxter.walker@avisonyoung.com



# About Holly Springs

- 5th largest town in Wake County, North Carolina
- 88% home ownership rate – highest among NC's metro areas
- \$283,731 median home value (ESRI)
- 50% of the population has a high school degree or higher (ESRI)
- 60+ businesses located in downtown Holly Springs
- Experiencing rapid population growth, the town has more than doubled in size since 2000
- Home to one of the largest biopharmaceutical companies in the region
- 7 schools: 4 elementary, 2 middle, and 1 high school
- Schools are part of the Wake County Public School System, which is consistently ranked among the top public-school systems in the nation
- 15-mile radius around Holly Springs stretches to Downtown Raleigh, Apex, Cary, Morrisville, and Research Triangle Park
- ±630,000 people within a 15-mile radius; work force of ±278,000 people within a 15-mile radius (ESRI)

## MAJOR EMPLOYERS



### #1 SAFEST CITY IN NORTH CAROLINA

– December 2019, HomeSnacks

### #1 BEST CITY FOR JOBS IN NORTH CAROLINA

– May 2019, Zippia

### #1 SAFEST CITY IN NORTH CAROLINA

– April 2019, SafeWise

### #4 BEST PLACES TO LIVE IN NORTH CAROLINA

– January 2019, HomeSnacks

### #5 BEST PLACE IN NORTH CAROLINA TO RAISE A FAMILY

– June 2019, WalletHub

### #7 MOST AFFORDABLE HOUSING MARKETS IN NORTH CAROLINA

– July 2018, SmartAsset

### HOLLY SPRINGS HIGH SCHOOL IS ONE OF THE TOP SCHOOLS IN THE NATION AND IN THE TOP 6% OF HIGH SCHOOLS IN THE U.S.

– Newsweek Magazine

**AVISON  
YOUNG**

[avisonyoung.com](http://avisonyoung.com)



**HOLLY  
SPRINGS**  
North Carolina



## NEW DEVELOPMENTS

### The Block on Main –

3-story, 52,000-sf mixed-use building

### Town Hall Commons –

45,000-sf mixed-use building

### Peterson Station at Sunset Lake Road\* –

300 apartment units with ±40,000-sf retail space

### Lowes Home Improvement/Wegmans\* –

Approved retail center at Highway 55 and Ralph Stephens Road

*\*Peterson Station and Lowes/Wegmans developments will provide downtown Holly Springs with an additional 35 businesses, 500 jobs and an \$86 million economic impact.*