

# FOR LEASE

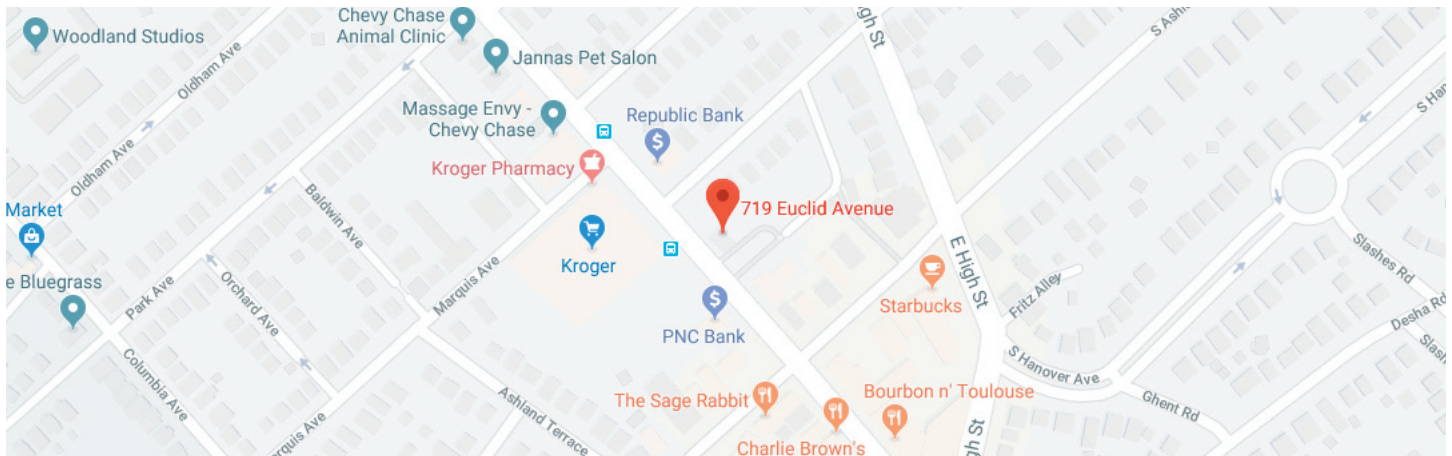
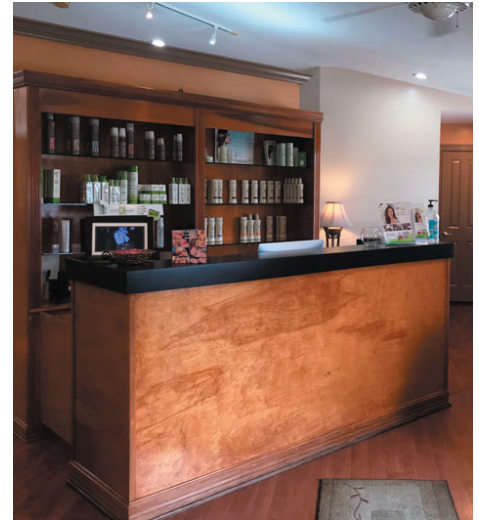
719 Euclid Ave, Lexington, KY 40502

\$14.00 /SF/Yr



## Suite 200

Space Available:	1,600 SF
Rental Rate:	\$14.00 /SF/Yr (Plus CAM)
Property Type:	Office
Year Built:	1998
Zoning:	B-1 - Neighborhood Business



Location, Location, Location. This second floor suite is an absolute dream space right in the hearty of Chevy Chase. The space was recently a salon but would be ideal for multiple other types of businesses wanting either open space throughout or could be divided into private offices as well. Onsite owner with salon on the first floor that provides wonderful maintenance of the building. Free parking right next to the building as well. You don't want to miss this!



**LAURA ADAMS**

**859-333-6024**

ladams@schradercommercial.com

444 E Main Street, Suite 110  
PO Box 21793 Lexington, KY 40522

**SCHRADER**  
COMMERCIAL PROPERTIES, LLC

859-288-5008 / [schradercommercial.com](http://schradercommercial.com)

The information contained herein is from sources believed, but not guaranteed to be reliable. Schrader Commercial Properties, LLC makes no representations or warranties regarding the property and you should conduct a careful independent investigation of the property to determine its suitability for your use and investment.



# Property Photos

