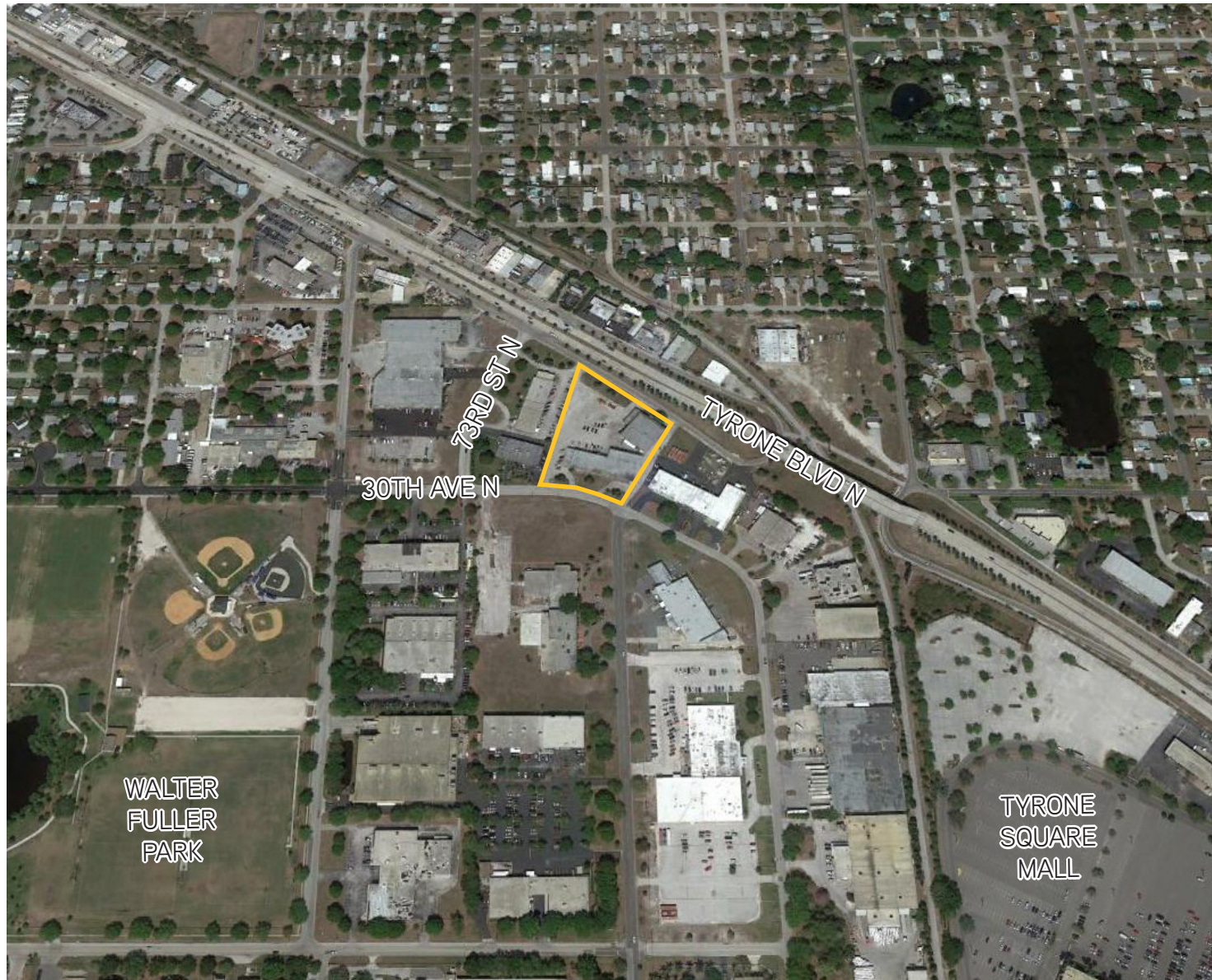


# 7205 30TH AVE N

ST PETERSBURG, FLORIDA (PINELLAS COUNTY)



Property Website:  
<http://cilistings.listinglab.com/30StPete>

**JAN BOLTRES, CCIM**  
Managing Director, Industrial Services  
Dir +1 813 871 8505  
Cell +1 727 204 0877  
jan.boltres@colliers.com

**JOHN JACKSON**  
Industrial Services  
Dir +1 813 871 8509  
Cell +1 727 643 7316  
john.b.jackson@colliers.com

**COLLIERS INTERNATIONAL  
TAMPA BAY**  
4350 West Cypress Street  
Suite 300  
Tampa, Florida 33607

This document has been prepared by Colliers International for advertising and general information only. Colliers International makes no guarantees, representations or warranties of any kind, expressed or implied, regarding the information including, but not limited to, warranties of content, accuracy and reliability. Any interested party should undertake their own inquiries as to the accuracy of the information. Colliers International excludes unequivocally all inferred or implied terms, conditions and warranties arising out of this document and excludes all liability for loss and damages arising there from. This publication is the copyrighted property of Colliers International and/or its licensor(s). ©2014. All rights reserved.



FOR SALE OR LEASE > INDUSTRIAL

# 7205 30TH AVENUE NORTH

ST PETERSBURG | FL 33710

Price Reduced



Tampa Bay Florida

## PROPERTY OVERVIEW

- 2 Buildings totaling 28,802 SQ FT
- Heavy Power
- 4 Grade Level Truck Doors
- 2.48 Acres
- 16' Ceiling Height
- 4,000± SQ FT Office
- Ample Parking/ Outside Storage
- Tyrone Blvd Visibility
- Price: \$1,390,000







Main Building

# BUILDING 1

16,806 SQ FT

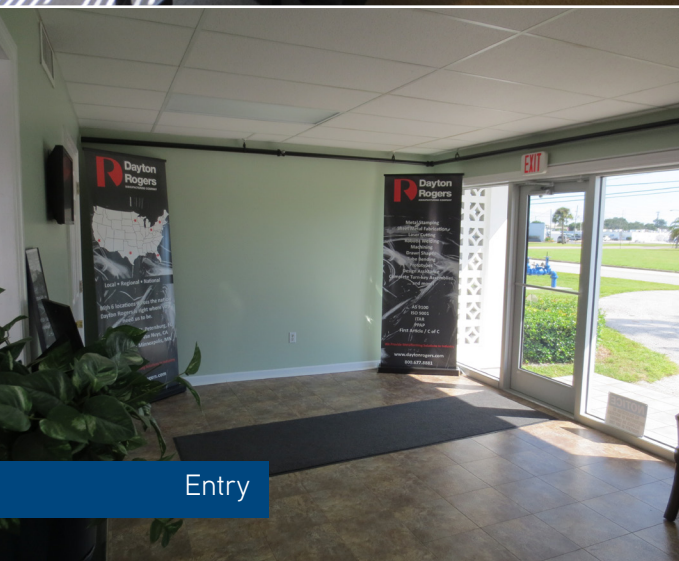
- OFFICE:** 3,000 SQ FT
- DOORS:** 2 Grade Level Truck Doors
- AIR CONDITIONED:** 100%
- ELECTRIC SERVICE:** 1200 AMP
- CEILING HEIGHT** 16'
- STORAGE:** Mezzanine & Outside Storage



Reception



Conference Room



Entry

# BUILDING 2

11,996 SQ FT

- OFFICE:** 1,000 SQ FT
- DOORS:** 2 Grade Level Truck Doors
- AIR CONDITIONED:** 50%
- ELECTRIC SERVICE:** 1200 AMP
- CEILING HEIGHT** 16'
- STORAGE:** Outside Storage/ Ample Parking



Parking



Grade Level



Office



Truck Door

