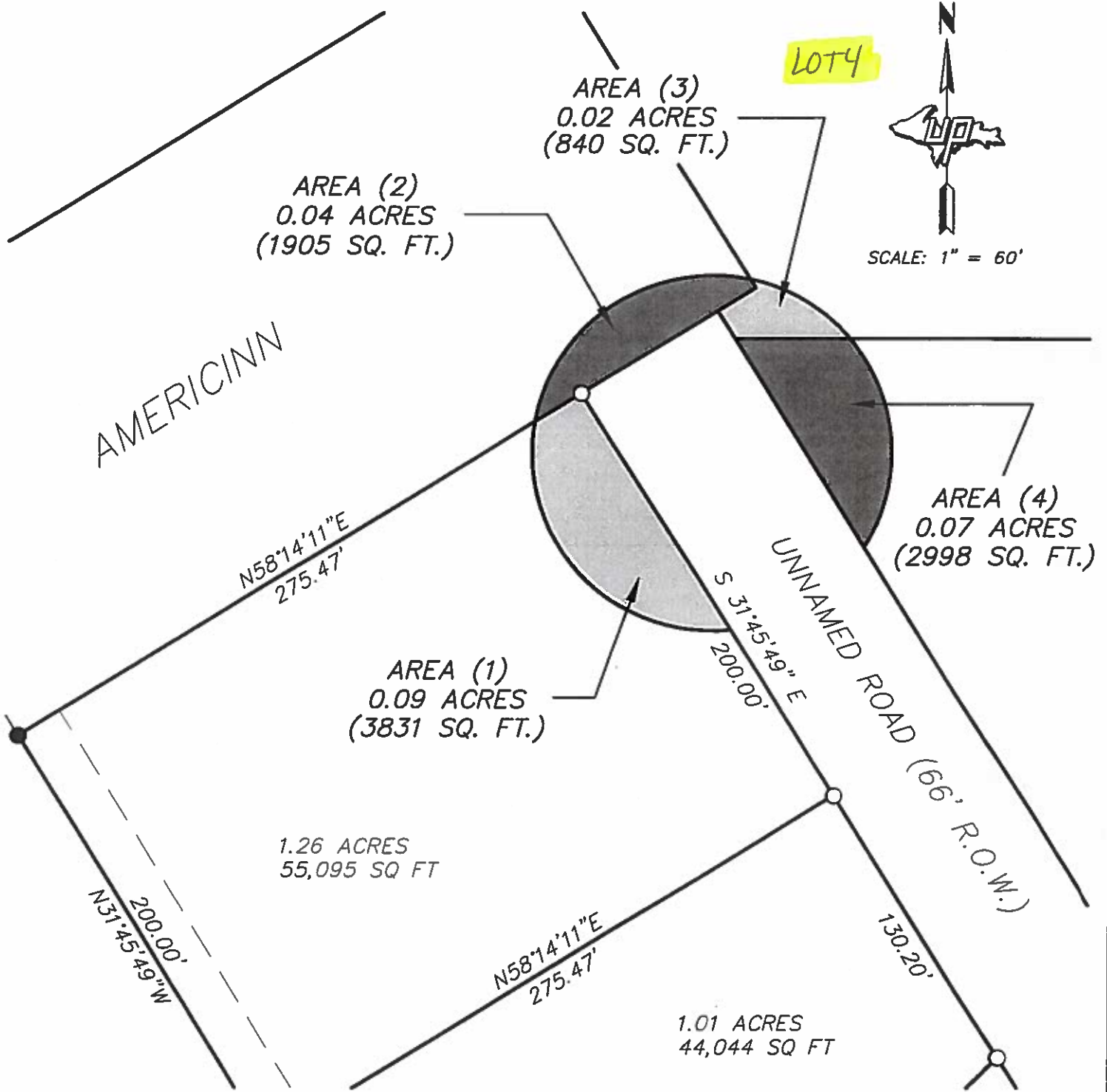


- INDICA*
- INDICA*
- INDICA

RIGHT-OF-WAY ABANDONMENT SKETCH

PART OF THE NW 1/4 OF THE NW 1/4 OF
SECTION 8, T39N, R29W
CITY OF NORWAY, DICKINSON COUNTY, MICHIGAN



**U.P. ENGINEERS &
ARCHITECTS, INC.**

HOUGHTON · MARQUETTE ·
NORWAY · SAULT STE. MARIE

**RIGHT-OF-WAY ABANDONMENT SKETCH
OF PART OF NW1/4 OF NW1/4, SEC. 8, T39N, R29W**

CITY OF NORWAY
DICKINSON COUNTY, MICHIGAN

CHECKED: R. GOODREAU

DRAWN: A. YLKANEN

DATE: 01/14/03

FILE No.: S32-23149

DWG. NAME: ROWABANDON.DWG