



FOR SALE/
LEASE

Flett Creek Plaza

7602 BRIDGEPORT WAY W, LAKEWOOD, WA



**Kidder
Mathews**

This information supplied herein is from sources we deem reliable. It is provided without any representation, warranty, or guarantee, expressed or implied as to its accuracy. Prospective Buyer or Tenant should conduct an independent investigation and verification of all matters deemed to be material, including, but not limited to, statements of income and expenses. Consult your attorney, accountant, or other professional advisor.

KIDDER.COM

FOR SALE/LEASE

Flett Creek Plaza

7602 BRIDGEPORT WAY W, LAKEWOOD, WA



Sale Price: \$1,900,000
Lease Rate: \$15.00, NNN

13,601 SF (15,912 SF total building area)

1,819 - 3,732 SF available for lease

42,264 SF land

CONDOMINIUM declaration in place
(Statefarm NAP)

4 STORIES - 3,828 SF per floor

MONUMENT signage

±25,000 VPD traffic

ZONED NC - Lakewood Neighborhood
Commercial

PARKING 47 stalls

PARK-LIKE setting in back

DEMOGRAPHICS

2019	1 Mile	3 Miles	5 Miles
Population	9,939	106,468	253,818
Median HH Income	\$56,574	\$64,145	\$62,383

KIDDER.COM

This information supplied herein is from sources we deem reliable. It is provided without any representation, warranty, or guarantee, expressed or implied as to its accuracy. Prospective Buyer or Tenant should conduct an independent investigation and verification of all matters deemed to be material, including, but not limited to, statements of income and expenses. Consult your attorney, accountant, or other professional advisor.

km Kidder
Mathews

FOR SALE/LEASE

Flett Creek Plaza

7602 BRIDGEPORT WAY W, LAKEWOOD, WA



KIDDER.COM

This information supplied herein is from sources we deem reliable. It is provided without any representation, warranty, or guarantee, expressed or implied as to its accuracy. Prospective Buyer or Tenant should conduct an independent investigation and verification of all matters deemed to be material, including, but not limited to, statements of income and expenses. Consult your attorney, accountant, or other professional advisor.

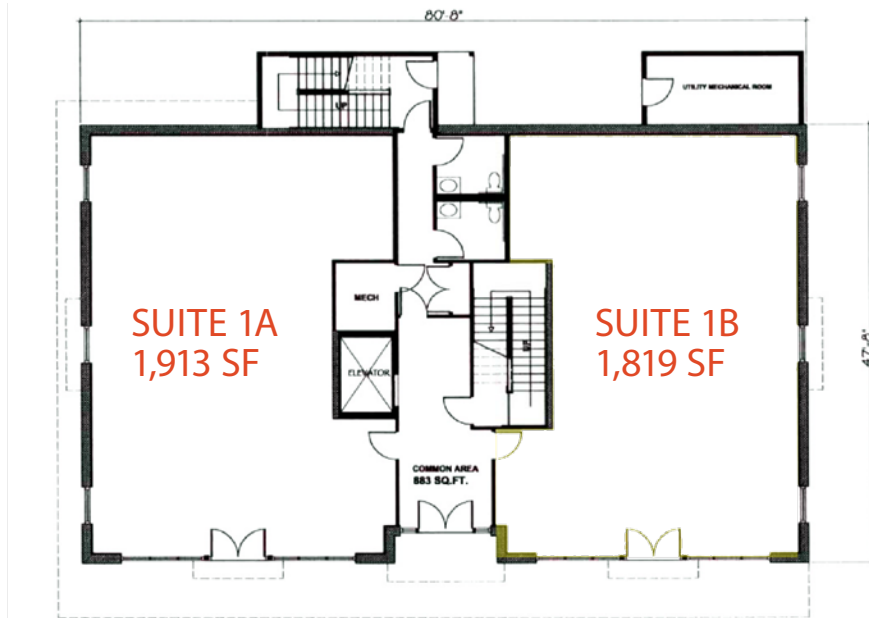
km Kidder Mathews

FOR SALE/LEASE

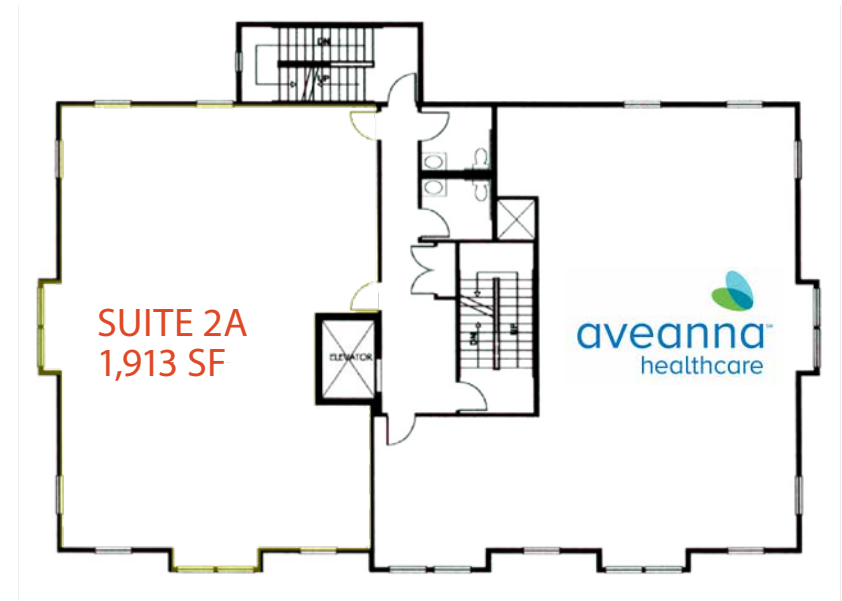
Flett Creek Plaza

7602 BRIDGEPORT WAY W, LAKEWOOD, WA

First Floor



Second Floor



RACHEL CORP

253.722.1417

rachel.corp@kidder.com

BRUCE PEART

425.450.1142

bruce.peart@kidder.com

ARIELLE DORMAN

425.450.1100

arielle.dorman@kidder.com

KIDDER.COM

This information supplied herein is from sources we deem reliable. It is provided without any representation, warranty, or guarantee, expressed or implied as to its accuracy. Prospective Buyer or Tenant should conduct an independent investigation and verification of all matters deemed to be material, including, but not limited to, statements of income and expenses. Consult your attorney, accountant, or other professional advisor.

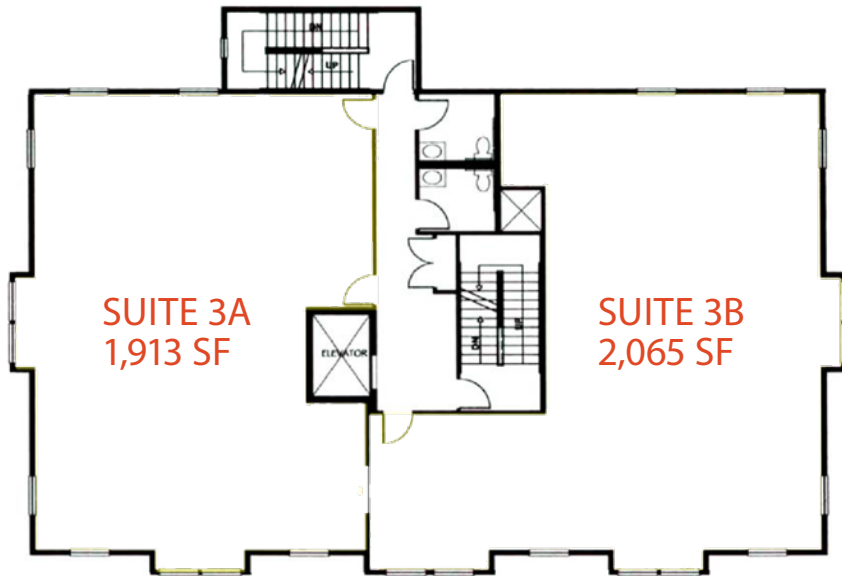


FOR SALE/LEASE

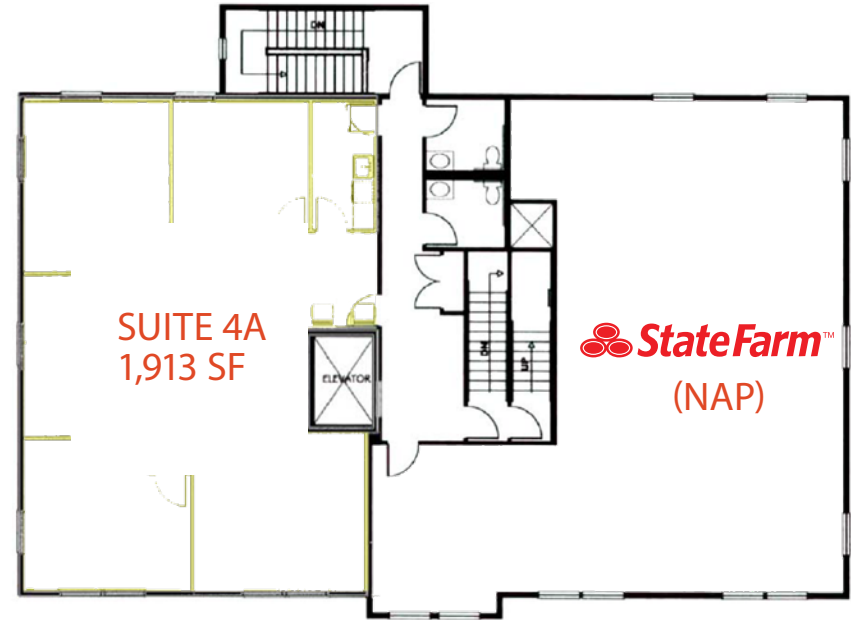
Flett Creek Plaza

7602 BRIDGEPORT WAY W, LAKEWOOD, WA

Third Floor



Fourth Floor



RACHEL CORP

253.722.1417

rachel.corp@kidder.com

BRUCE PEART

425.450.1142

bruce.peart@kidder.com

ARIELLE DORMAN

425.450.1100

arielle.dorman@kidder.com

KIDDER.COM

This information supplied herein is from sources we deem reliable. It is provided without any representation, warranty, or guarantee, expressed or implied as to its accuracy. Prospective Buyer or Tenant should conduct an independent investigation and verification of all matters deemed to be material, including, but not limited to, statements of income and expenses. Consult your attorney, accountant, or other professional advisor.

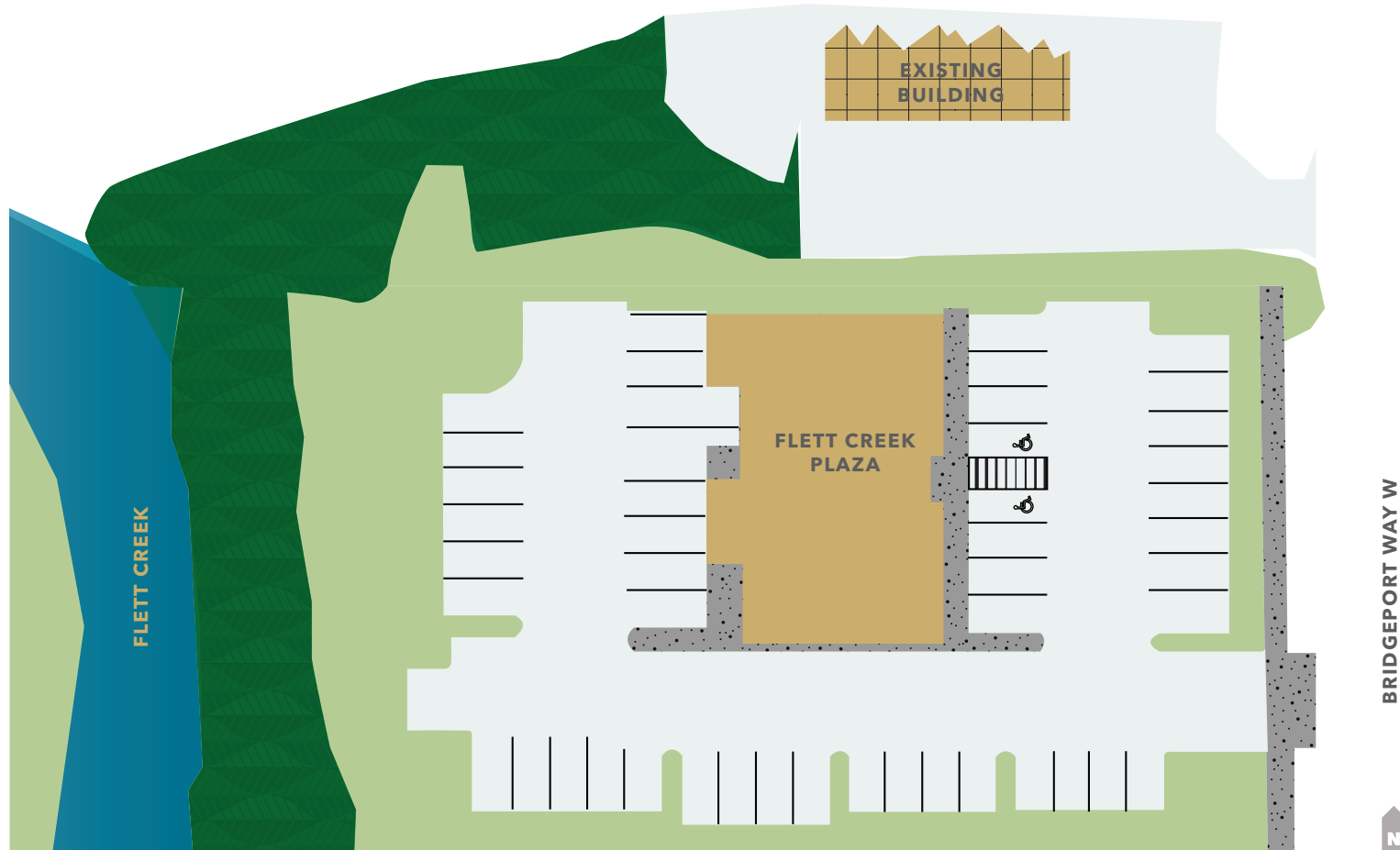
km Kidder Mathews

FOR SALE/LEASE

Flett Creek Plaza

7602 BRIDGEPORT WAY W, LAKEWOOD, WA

Site Plan



KIDDER.COM

This information supplied herein is from sources we deem reliable. It is provided without any representation, warranty, or guarantee, expressed or implied as to its accuracy. Prospective Buyer or Tenant should conduct an independent investigation and verification of all matters deemed to be material, including, but not limited to, statements of income and expenses. Consult your attorney, accountant, or other professional advisor.