



**BERKSHIRE HATHAWAY**  
HomeServices  
Georgia Properties

COMMERCIAL DIVISION

**FOR SALE**

**35—41 Industrial Acres**

Just off Hwy 365 corridor—  
where the growth is at  
**\$30,000 p.p.a**



**2581 Ramsey Circle @ White Sulphur, Gainesville**

Marketed By:

**Brent Hoffman**

Berkshire Hathaway Home Services GA Properties  
500 Jesse Jewell Pkwy., SE Suite 300, Gainesville, GA 30501  
Direct- 770-533-6721  
Office – 770-536-3007  
Brent@BrentHoffman.com [www.BrentHoffman.com](http://www.BrentHoffman.com)



**Brent Hoffman**



**BERKSHIRE HATHAWAY**  
HomeServices  
Georgia Properties

**COMMERCIAL DIVISION**

# Property Information

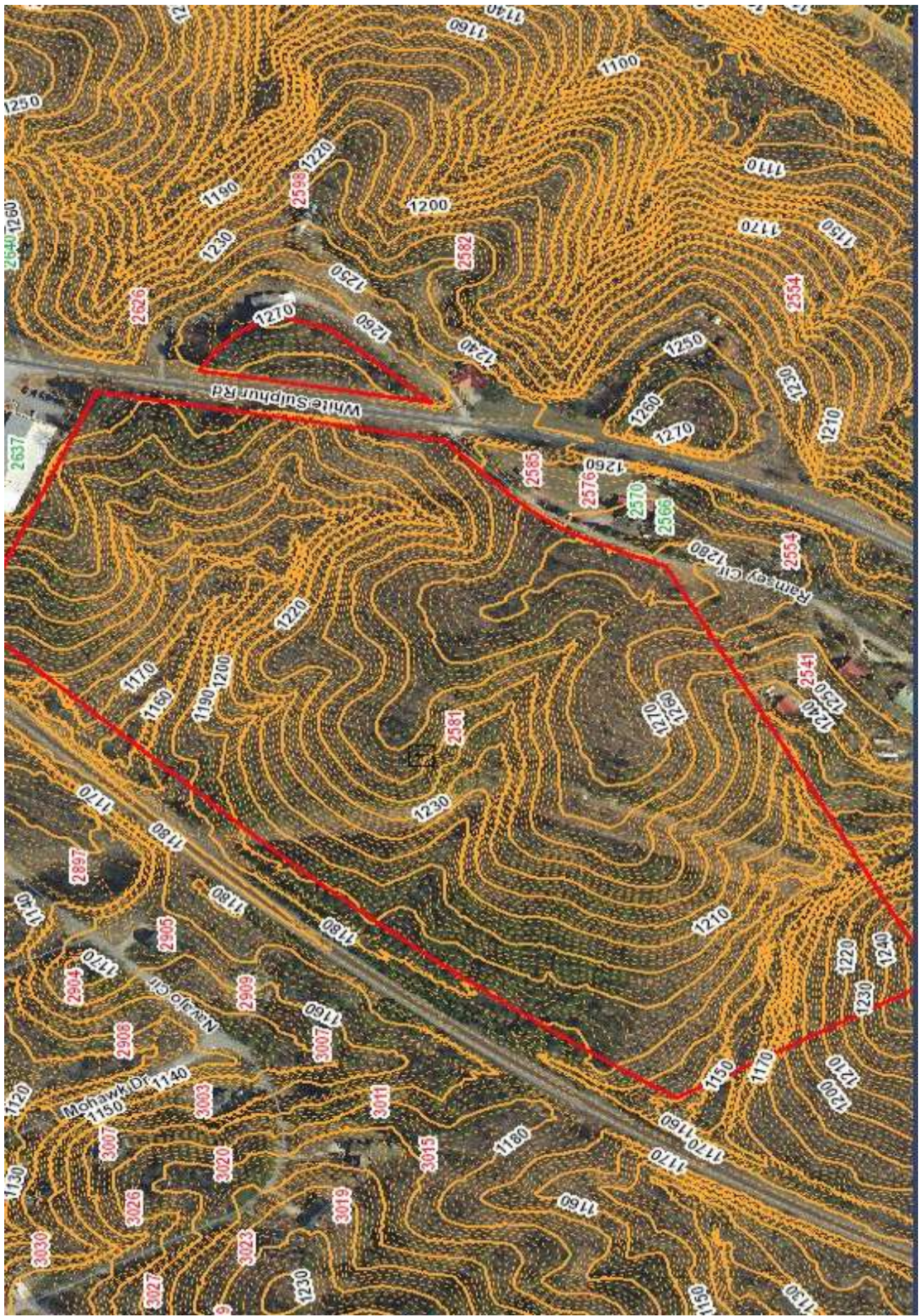
## Reduced to \$30,000 ppa



- ◆ **Just off expanding Hwy 365 / I-985**
- ◆ **This is ground zero for Industrial expansion in Hall County.**
- ◆ **On rail - Norfolk Southern Railway**
- ◆ **Sewer / water adjacent to property**
- ◆ **Water and Sewer Letter availability in hand. 16" water line and 12" sewer in the right of way**
- ◆ **Near Gateway Industrial Park and new inland Port development**
- ◆ **Currently zoned AR3—easy rezone to industrial - will sell subject to rezone**

More info and video at: <https://www.brenthoffman.com/listings/I0320.html>





All materials furnished is from sources deemed reliable, but information has not been verified and is subject to errors or omissions

