



Industrial For Sale or Lease

Property Name:

Location: National Park Drive

City, State: Fowlerville, MI

Cross Streets: Grand River Avenue

County: Livingston

Zoning: Light Industrial

BUILDING SIZE / AVAILABILITY

Total Building Sq. Ft.: 150,000
Available Sq. Ft.: 25,000 - 150,000

Building Type: Build-to-Suit
Available Shop Sq. Ft.: 25,000 - 150,000
Available Office Sq. Ft.: To Suit

Mezzanine: N/A
Office Dim: N/A
Shop Dim: N/A

PROPERTY INFORMATION

Clear Height: 26'
Grade Level Door(s): 0
Truckwells or Docks: 0
Exterior Construction: N/A
Structural System: N/A
Air-Conditioning: N/A
Heating: Yes
Availability: Immediately
Power (Amps/Volts): N/A

Multi-Tenant: Yes
Rail: No
Security: No
Interior: N/A
Lighting: N/A
Bay Sizes: N/A
Restrooms: Yes
Cranes: No
Parking: Ample

Year Built: N/A
Sprinklers: No
Signage: N/A
Exterior: N/A
Roof: N/A
Floors: N/A
Floor Drains: No
Acreage: 15.000
Land Dimensions: N/A

PRICING INFORMATION

Lease Rate: TBD
Lease Type: N/A
Sale Price: See Comments
Imprv Allow: N/A

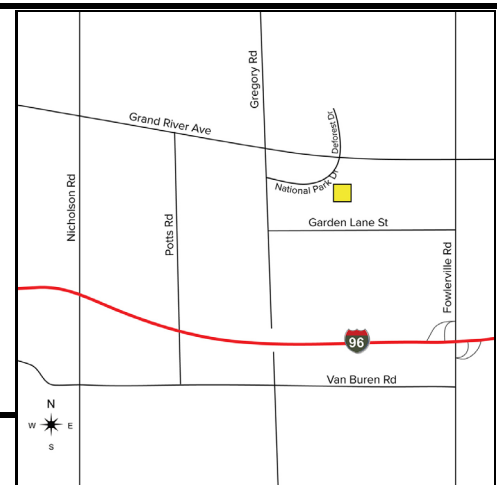
Mthly Rate: TBD
Lease Term: N/A
Taxes: N/A
Options: N/A

Deposit: N/A
TD: N/A
Parcel #: 05-10-300-039
Assessor #: N/A

Tenant Responsibility: N/A

COMMENTS

For Sale or Lease - owner can build 25,000 - 150,000 sq. ft. to-suit. Recently, fully developed with all utilities and possible rail. Sale Price: \$40,000 per acre.



Broker: SIGNATURE ASSOCIATES

Agent(s):

Jim Montgomery, (248) 359-0614, jmontgomery@signatureassociates.com